



GOVERNMENT OF ZIMBABWE
MINISTRY OF ENVIRONMENT, CLIMATE AND WILDLIFE

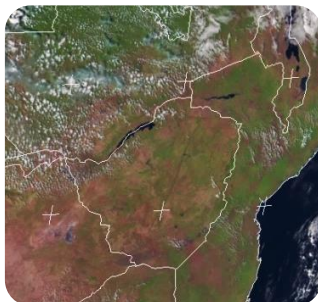


METEOROLOGICAL SERVICES DEPARTMENT
P.O. BOX 159 BELVEDERE, HARARE, ZIMBABWE
PHONE: +263 242 778 161 / +263 778 125 911
All correspondence should be addressed to the Director

WEATHER REPORT & Forecast

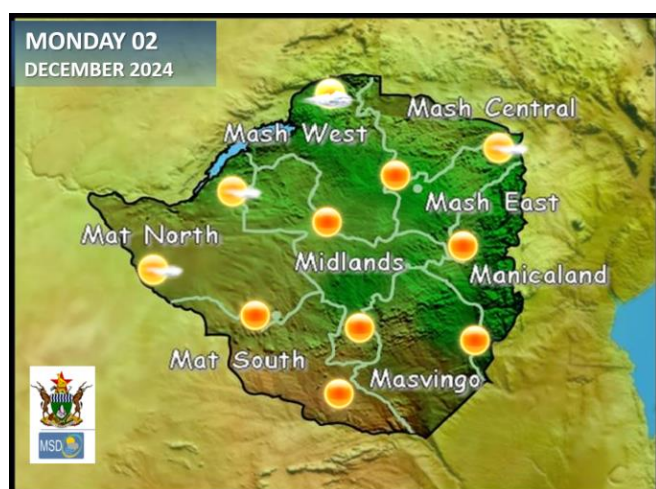


SATELLITE-BASED GLANCE INTO TODAY, SUNDAY 01 DECEMBER 2024



The first day of December 2024 was mostly sunny and hot across the country and became mild towards evening as relatively dry air circulated over much of the country. However, a few clouds can be noted over Zambia indicating the proximity of the rain-bearing Inter-Tropical Convergence Zone (ITCZ), which should descend into the northern parts of Zimbabwe later this month.

WEATHER OUTLOOK FOR: MONDAY 02 DECEMBER 2024



Morning: Mild with clear skies countrywide.

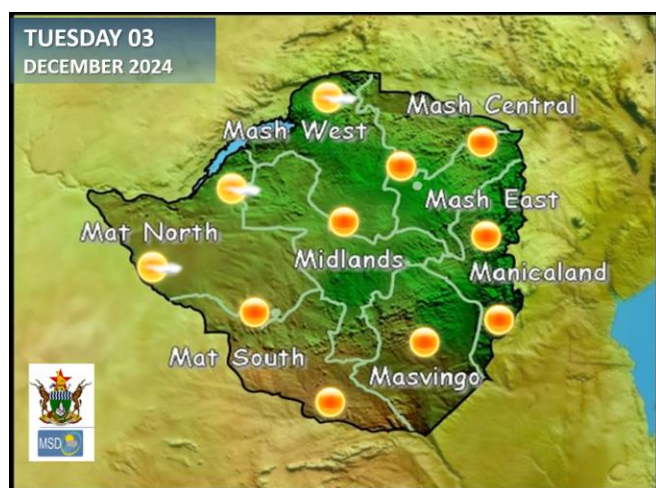
Afternoon: Mostly sunny and hot in all areas.

Overnight: Clear skies and mild conditions.

IMPACTS & ACTIONS TO TAKE:

- Stay hydrated and avoid exposure to direct sunlight whenever possible.
- If you need to be outdoors for a prolonged period, have a sunhat or umbrella to protect yourself from direct sunshine.
- Consult your local health practitioner for better advice on health-related matters.

WEATHER OUTLOOK FOR: TUESDAY 03 DECEMBER 2024



Morning: Relatively dry and mild conditions.

Afternoon: Sunny and very hot across the country.

Overnight: Mild with a starry sky.

Impacts & Actions to Take:

- Irrigate/water crops when heat-stress is noted.
- It is more advisable to irrigate early morning or late evening.
- Consult your local Agritex officer for sound advice on farming practices, including what to plant and the water requirements for specific plant stages.

Congratulations to the future



who passed their Grade 7's



WHOLE OF GOVERNMENT APPROACH



METEOROLOGICAL SERVICES DEPARTMENT
IN CONJUNCTION WITH
DEPARTMENT OF CIVIL PROTECTION &
ZIMBABWE NATIONAL WATER AUTHORITY





5-DAY FORECAST FOR MAJOR CITIES:

MON 02 – FRI 06 DEC 2024

BULAWAYO

MON	TUE	WED	THU	FRI
31 17 0.0mm	32 17 0.0mm	33 18 0.0mm	31 19 0.0mm	31 19 0.0mm

CHINHOYI

MON	TUE	WED	THU	FRI
32 19 0.0mm	33 19 0.0mm	34 20 0.0mm	33 20 0.0mm	32 21 0.0mm

GWERU

MON	TUE	WED	THU	FRI
26 16 0.0mm	27 16 0.0mm	27 17 0.0mm	28 17 0.0mm	28 18 0.0mm

KADOMA

MON	TUE	WED	THU	FRI
30 17 0.0mm	31 17 0.0mm	32 18 0.0mm	34 19 0.0mm	33 20 0.0mm

LUPANE

MON	TUE	WED	THU	FRI
33 18 0.0mm	35 20 0.0mm	36 20 0.0mm	36 22 0.0mm	35 23 0.0mm

MASVINGO

MON	TUE	WED	THU	FRI
28 16 0.0mm	29 16 0.0mm	30 18 0.0mm	31 18 0.0mm	29 19 0.0mm

BINDURA

MON	TUE	WED	THU	FRI
29 19 0.0mm	30 19 0.0mm	31 20 0.0mm	32 21 0.0mm	33 19 0.0mm

GWANDA

MON	TUE	WED	THU	FRI
32 15 0.0mm	32 16 0.0mm	33 18 0.0mm	35 20 0.0mm	33 22 0.0mm

HARARE

MON	TUE	WED	THU	FRI
27 17 0.0mm	28 17 0.0mm	29 18 0.0mm	30 18 0.0mm	32 19 0.0mm

KWEKWE

MON	TUE	WED	THU	FRI
29 17 0.0mm	31 18 0.0mm	31 19 0.0mm	32 19 0.0mm	33 21 0.0mm

MARONDERA

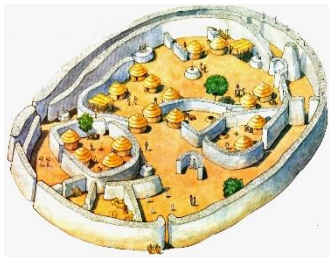
MON	TUE	WED	THU	FRI
26 16 0.0mm	27 16 0.0mm	28 17 0.0mm	28 18 0.0mm	29 19 0.0mm

MUTARE

MON	TUE	WED	THU	FRI
29 17 0.0mm	30 18 0.0mm	31 18 0.0mm	32 19 0.0mm	31 18 0.0mm



VICTORIA FALLS
ZIMBABWE



BINGA

MON	TUE	WED	THU	FRI
36 22 006mm	36 23 0.0mm	37 23 0.0mm	37 25 0.0mm	38 26 0.0mm

CHINHOYI CAVES

MON	TUE	WED	THU	FRI
32 19 0.0mm	33 19 0.0mm	34 20 0.5mm	33 20 0.0mm	32 21 0.0mm

CHIREZI/GONAREZHOU NAT. PARK

MON	TUE	WED	THU	FRI
33 20 0.0mm	34 21 0.0mm	35 21 0.0mm	36 22 0.0mm	34 23 0.0mm

HWANGE NATIONAL PARK

MON	TUE	WED	THU	FRI
35 19 0.0mm	36 20 0.0mm	36 21 0.0mm	37 23 0.0mm	37 23 0.0mm

MATOPOS

MON	TUE	WED	THU	FRI
31 15 0.0mm	32 16 0.0mm	33 16 0.0mm	35 18 0.0mm	34 18 0.0mm

VICTORIA FALLS

MON	TUE	WED	THU	FRI
35 20 0.0mm	36 20 0.0mm	37 21 0.0mm	37 21 0.0mm	35 22 0.0mm

CHIMANIMANI

MON	TUE	WED	THU	FRI
30 17 0.0mm	29 18 0.0mm	31 18 0.0mm	32 20 0.0mm	29 22 0.0mm

GREAT ZIMBABWE

MON	TUE	WED	THU	FRI
28 16 0.0mm	29 16 0.0mm	30 18 0.0mm	31 18 0.0mm	29 19 0.0mm

HOT SPRINGS

MON	TUE	WED	THU	FRI
31 18 0.0mm	32 18 0.2mm	33 19 0.1mm	34 19 0.0mm	34 20 0.0mm

KARIBA

MON	TUE	WED	THU	FRI
34 25 0.0mm	35 25 0.0mm	36 26 0.0mm	37 26 0.0mm	35 25 0.0mm

NYANGA

MON	TUE	WED	THU	FRI
25 14 0.0mm	26 14 0.0mm	27 15 0.0mm	27 16 0.0mm	28 14 0.0mm

VUMBA

MON	TUE	WED	THU	FRI
29 18 0.0mm	30 18 0.0mm	30 20 0.0mm	31 22 0.0mm	31 21 0.0mm

