

WEEKLY RAINFALL BULLETIN

RELEASED: 21 NOVEMBER 2024

SEASON: 2024-2025

VALID: 21 NOVEMBER TO 27 NOVEMBER 2024

WEEKLY RAINFALL BULLETIN

BULLETIN N°04

Contents

Summary of the past week.....	2
Seasonal Accumulated Precipitation.....	3
Normal Precipitation Percentage.....	4
Evaporation.....	5
Weather Outlook for the Precipitation Period 22 to 27 November 2024.....	6

for more information and daily update follow us on:

Twitter: <https://twitter.com/MSDZIM>

Facebook: <https://www.facebook.com/Meteorological-Services-Department-of-Zimbabwe-1466334176961651/>

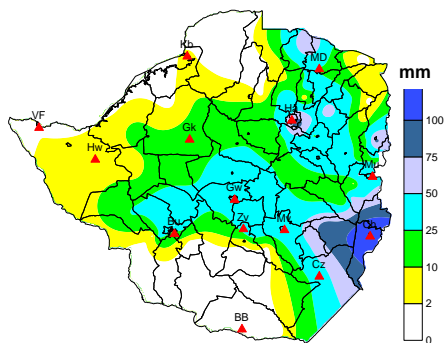


Fig 1 Weekly rainfall 13 Nov to 20 Nov 2024

SUMMARY OF PAST WEEK

The movement of the western cloud band toward the central parts of the country, coupled with the presence of moisture in the middle levels, led to widespread precipitation in several areas. Notable weekly rainfall totals were recorded at Chipinge (135.9mm), Chisumbanje (95.3mm), and Harare Kutsaga (94.2mm). Some southern regions experienced light rain and drizzle, as shown in Figures 1 and 2.

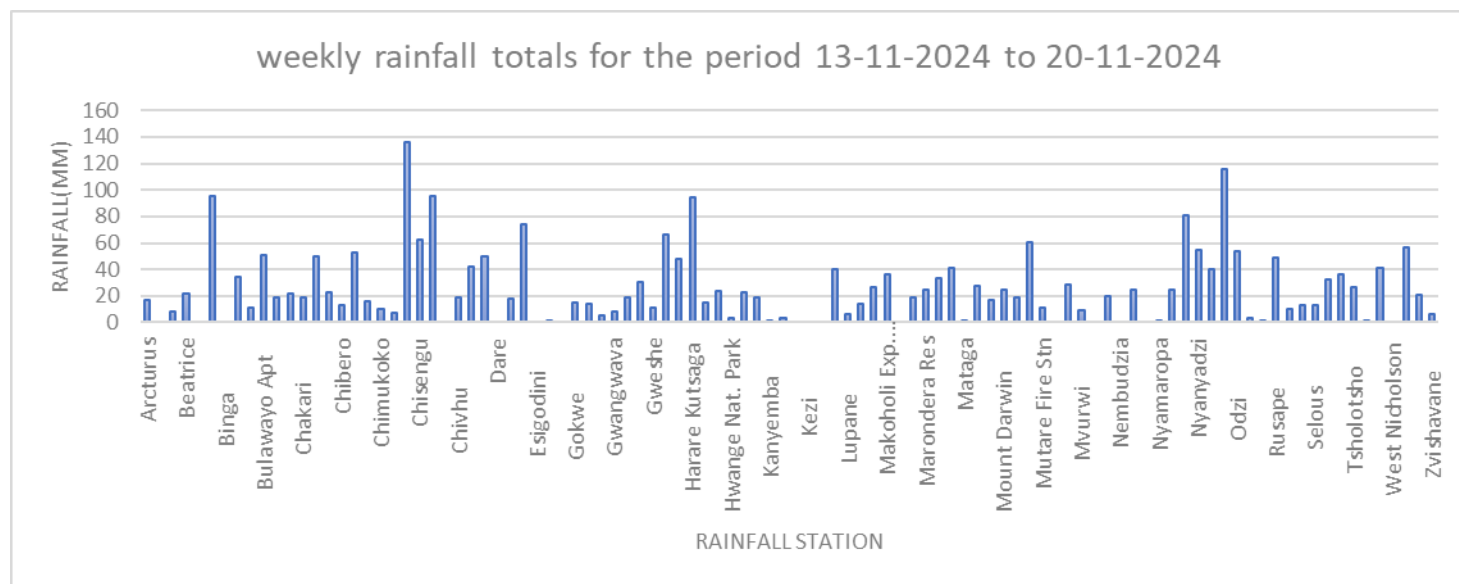


Fig 1: Weekly rainfall for selected stations

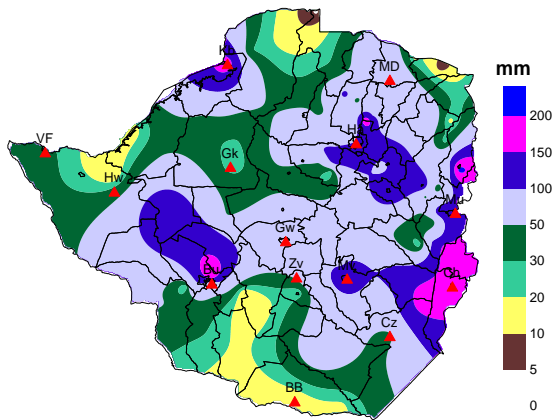


Figure 3: Accumulated Rainfall in mm as from 01 October 2023 to 20 November 2024

SEASONAL ACCUMULATED PRECIPITATION

The month of November has seen rainfall activity in most parts of the country, with Nyanga Exp Station (216.4mm), Bulawayo Airport (197.7mm), Harare Crowborough (197.0mm), and Arcturus (186.0mm) being some of the locations that have surpassed the 150mm mark to date, as shown in Figures 3 and 4.

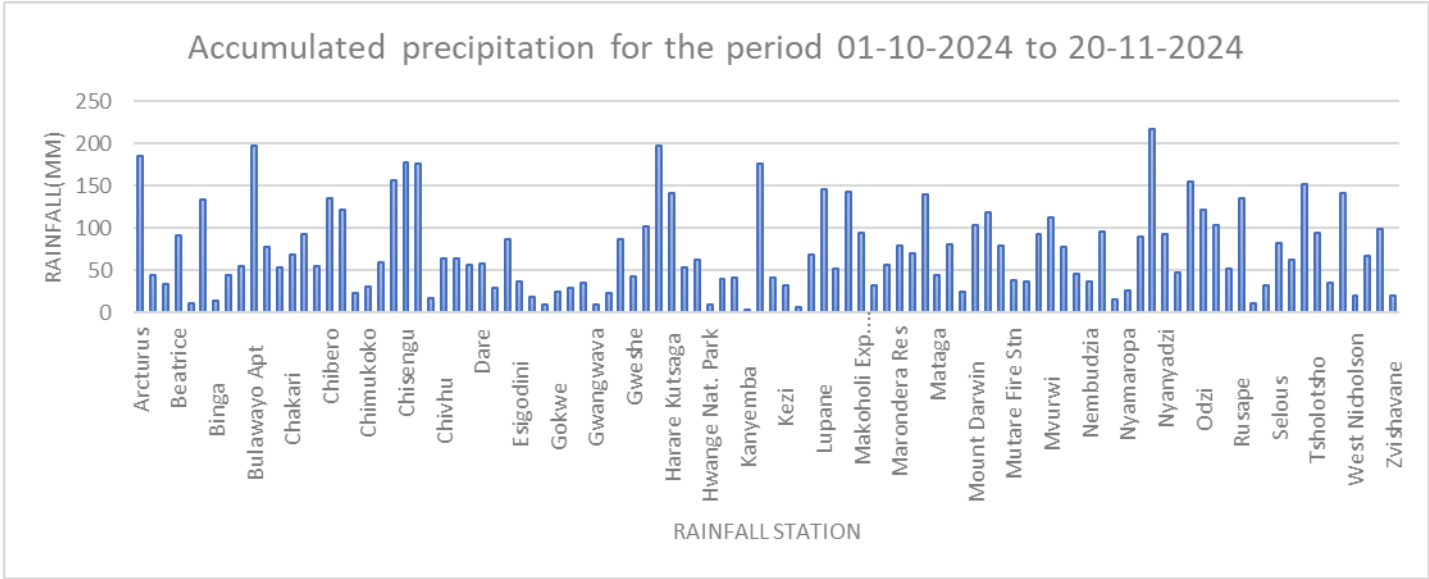
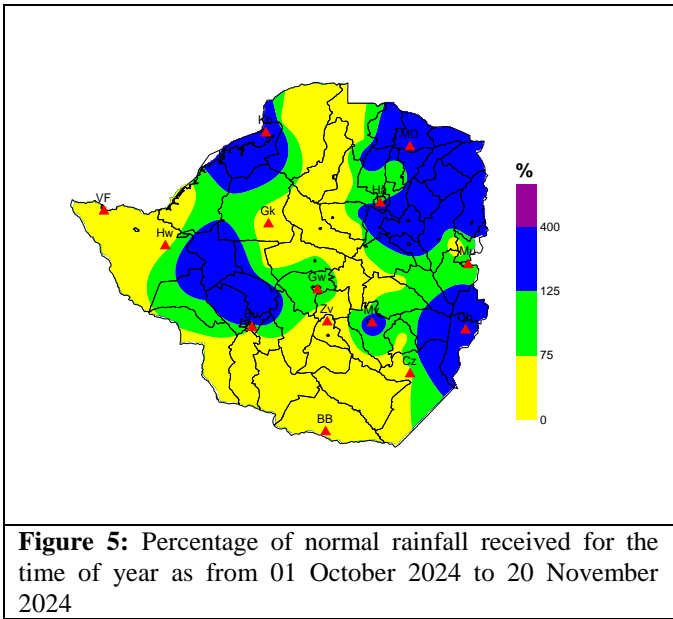


Fig 4: Seasonal totals for selected stations



NORMAL PRECIPITATION PERCENTAGE

Parts of the country have received above-normal precipitation (blue). These areas have been wetter than expected. However the bulk of the country remains within the normal to below-normal range (yellow and green), as shown in Figs 5 and 6.

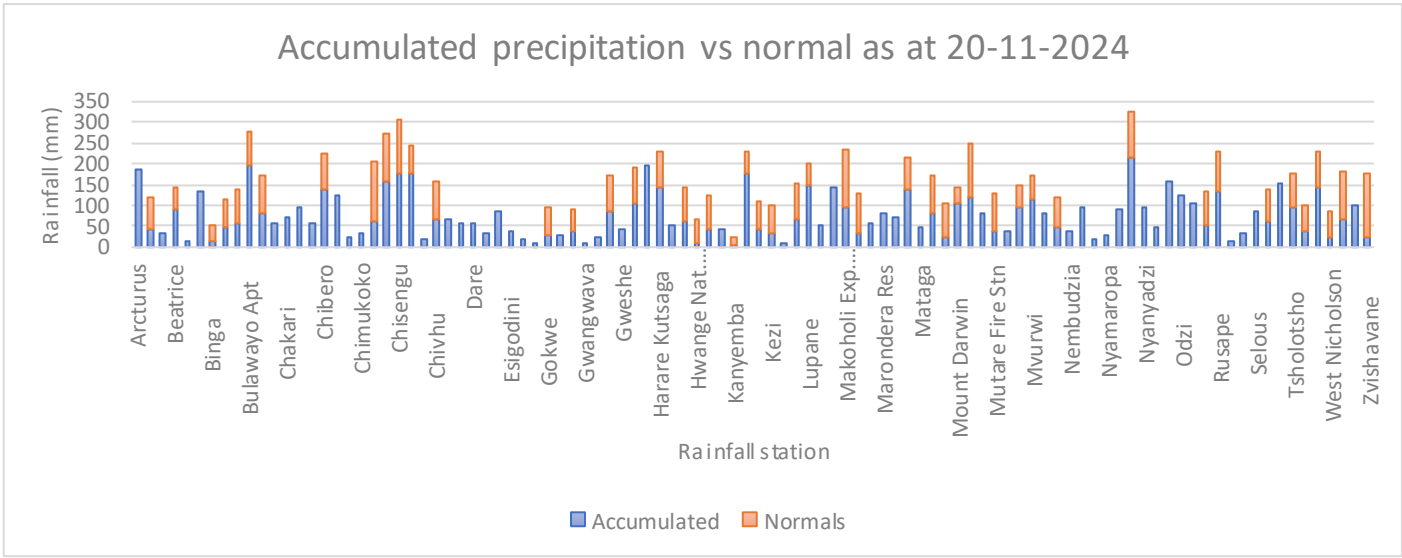


Fig 6: Rainfall received to date compared to the long term averages for same period

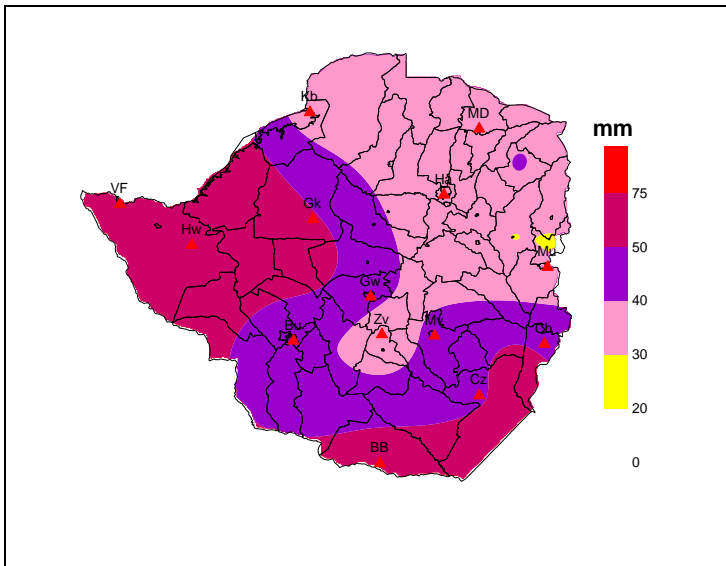


Figure 7: Evaporation for the week ending 13 Nov to 20 Nov 2024

EVAPORATION

The western and southern parts of the country experienced dry conditions, with evaporation rates between 50-75mm, while northern areas had lower rates of 30-40mm. This difference was due to temperature and precipitation variations during the week in the different areas (Figure 7).

Weather outlook for the period 22-11-2024 to 29-11-2024

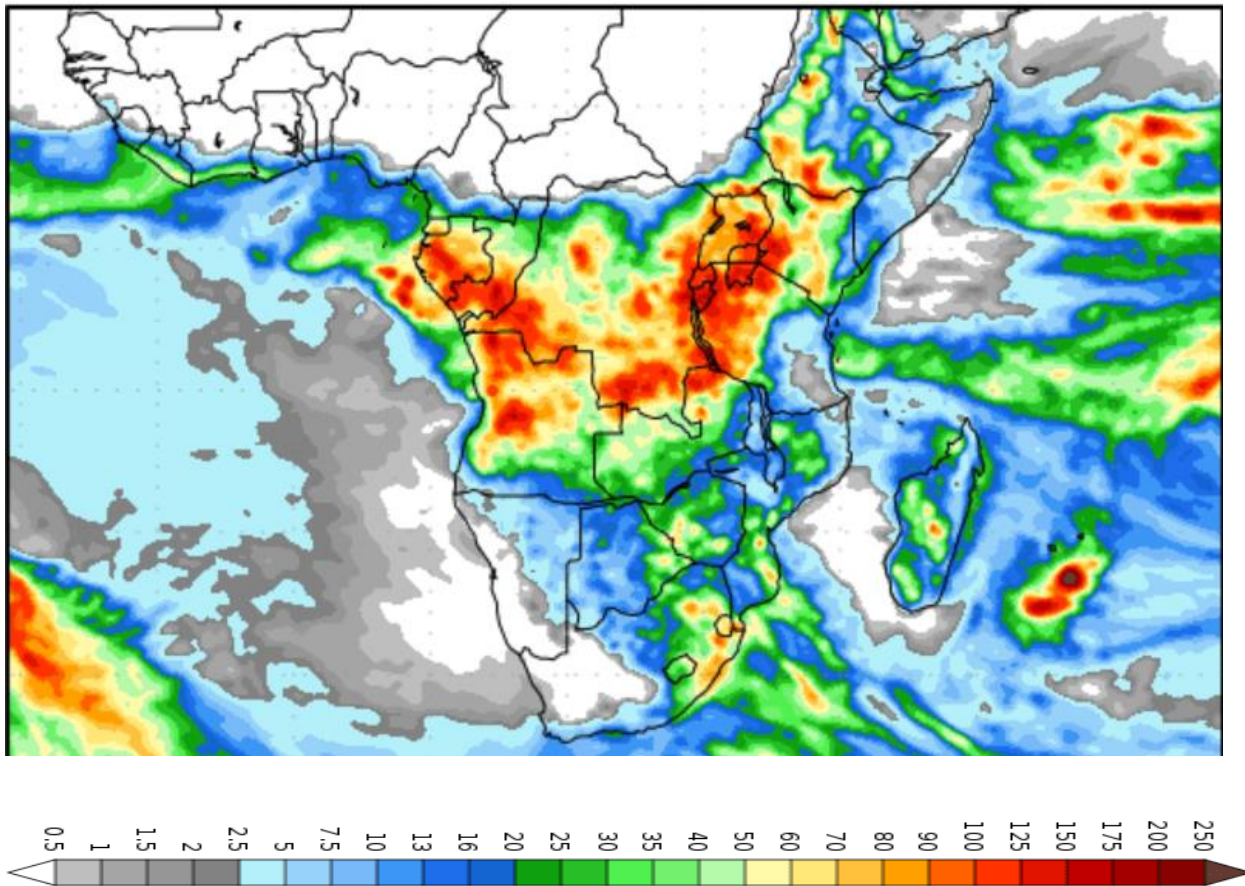


Figure 8: Accumulated precipitation forecast for the period 21 November to 29 November 2024 (courtesy of National Center for Environmental Prediction)

A cloud system is expected to move eastward from the west on Saturday, 23 November 2024, bringing scattered thunderstorms that will start in Matabeleland North and Matabeleland South and spread to other provinces. The system will cover much of the country by Wednesday 27 November, 2024. While most areas will receive less than 15mm of rain, some locations may see heavier falls exceeding 30mm as shown in Fig 8.