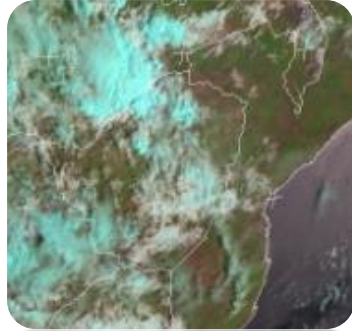


WEATHER REPORT & Forecast



Yesterday, moisture throughout the country led to widespread thunderstorms in several areas. The highest recorded rainfall amounts were received in **Chipinge (41mm)**, **Plumtree (36mm)**, **Kariba (27mm)**, **Gwanda (26mm)**, and **Matopos (16mm)**, while the rest of the country experienced rainfall amounts below 10mm. This morning, much of the country experienced partly cloudy and mild conditions, with scattered thundershowers in places. As the day progressed, temperatures increased, leading to widespread showers and thunderstorms across **Matabeleland, Bulawayo Metropolitan, the Midlands, the Harare Metropolitan, and all Mashonaland provinces.**

WEATHER OUTLOOK FOR: SUNDAY 29 DECEMBER 2024



Morning: Expect partly cloudy and mild conditions over much of the country with a chance of isolated showers.

Afternoon: Anticipate partly cloudy and warm conditions across all regions, with widespread thunderstorms. Heavy rainfall is expected over **Masvingo, Matabeleland South, Manicaland, and the southern areas of the Midlands provinces.**

Overnight: Partly cloudy and mild conditions in all areas.

IMPACTS & ACTIONS TO TAKE:

- Plan your day with the weather in mind.
- When thunder roars it is best to be indoors.

WEATHER OUTLOOK FOR: MONDAY 30 DECEMBER 2024



Morning: Partly cloudy and mild conditions countrywide.

Afternoon: Anticipate scattered thunderstorms under partly cloudy and warm conditions in all areas, accompanied by heavy rainfall across **all Matabeleland provinces, Bulawayo Metropolitan, Masvingo, the Midlands, Manicaland, and Mashonaland East provinces.**

Overnight: Partly cloudy and mild conditions in all areas.

IMPACTS & ACTIONS TO TAKE:

- Plan your day with the weather in mind.
- When thunder roars it is best to be indoors.



5-DAY FORECAST FOR MAJOR CITIES: SUN 29 DEC 2024 – THU 02 JANUARY 2025

BULAWAYO

SUN	MON	TUE	WED	THU
30 19 >0.9mm	30 20 >7.6mm	32 19 >11.0mm	34 19 >20.0mm	32 20 >7.0mm

CHINHOYI

SUN	MON	TUE	WED	THU
33 21 >10mm	33 20 >5.0mm	34 21 >5.0mm	34 20 >5.0mm	33 20 >5.0mm

GWERU

SUN	MON	TUE	WED	THU
29 17 >10mm	30 16 >5.0mm	32 17 >5.0mm	33 17 >5.0mm	32 18 >5.0mm

KADOMA

SUN	MON	TUE	WED	THU
31 19 >10mm	31 19 >5.0mm	33 20 >5.0mm	34 19 >5.0mm	32 19 >5.0mm

LUPANE

SUN	MON	TUE	WED	THU
33 21 >10mm	32 21 >2.0mm	34 22 >5.0mm	35 22 >5.0mm	32 21 >1.0mm

MASVINGO

SUN	MON	TUE	WED	THU
32 22 >10mm	32 22 >5.0mm	34 21 >5.0mm	35 21 >5.0mm	33 22 >5.0mm

BINDURA

SUN	MON	TUE	WED	THU
31 21 >10mm	32 20 >5.0mm	33 20 >5.0mm	34 21 >5.0mm	32 20 >5.0mm

GWANDA

SUN	MON	TUE	WED	THU
32 21 >10mm	31 22 >1.0mm	34 21 >8.0mm	35 20 >5.0mm	35 21 >15.0mm

HARARE

SUN	MON	TUE	WED	THU
29 19 >10mm	30 20 >5.0mm	32 20 >5.0mm	33 19 >5.0mm	31 19 >5.0mm

KWEKWE

SUN	MON	TUE	WED	THU
30 19 >10mm	30 20 >5.0mm	32 20 >5.0mm	33 19 >5.0mm	32 18 >5.0mm

MARONDERA

SUN	MON	TUE	WED	THU
29 18 >10mm	30 17 >5.0mm	29 18 >5.0mm	30 18 >5.0mm	31 17 >5.0mm

MUTARE

SUN	MON	TUE	WED	THU
29 19 >10mm	30 20 >30.0mm	32 19 >5.0mm	33 19 >5.0mm	31 20 >5.0mm

