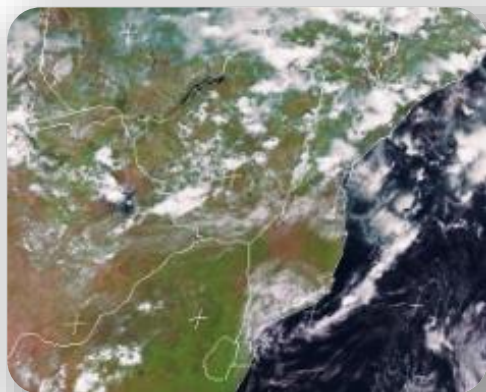


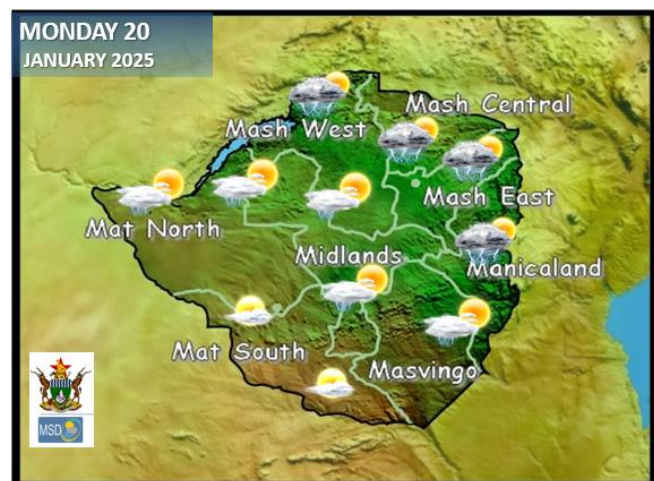
Weather Report & Forecast

SATELLITE-BASED GLANCE INTO THIS MORNING, SUNDAY 19 JANUARY 2025



It was cloudy over the southern and eastern parts of the country yesterday, with areas such as **Masvingo (72mm)**, **Murehwa (60mm)**, **Chivhu (41mm)**, **Harare (36mm)**, **Mutasa (38mm)**, **Nyanyadzi (32mm)** and **Hwedza (25mm)**, receiving considerable rainfall. To the northwest, a segment of the Inter-Tropical Convergence Zone (ITCZ) resulted in notable rainfall over **Victoria Fall (36mm)**, **Hwange (28mm)** and **Kariba (26mm)**. By today, it was less cloudy and warmer across much of the country, with brief cloudy periods and isolated showers to the north of Matabeleland South, Bulawayo Metropolitan, Midlands, Harare Metropolitan into Mashonaland East and Central Provinces.

WEATHER FOR TOMORROW: MONDAY 20 JANUARY 2025



Morning: Partly cloudy and mild conditions countrywide.

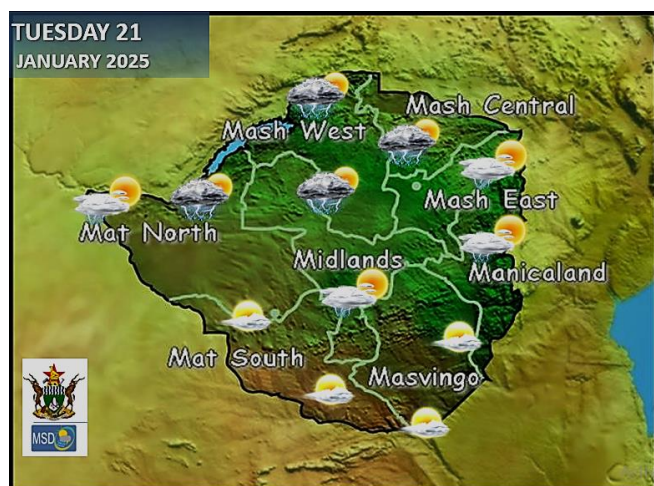
Afternoon: **All Mashonaland, Matabeleland North, the Midlands, and Manicaland Provinces;** briefly cloudy and warm with scattered thunderstorms which could be heavy in places. **Matabeleland South and Masvingo provinces** should be partly cloudy and hot.

Overnight: Briefly cloudy and mild with light rain in the northern provinces.

Impacts & Actions to Take:

- **When thunder roars it is best to be indoors.**
- **Flooding may occur downstream; so even if it has not rained in your area, do not attempt to cross any flooded river.**

WEATHER OUTLOOK FOR: TUESDAY 21 JANUARY 2025



Morning: Partly cloudy and mild conditions countrywide.

Afternoon: **All Mashonaland, northern parts of Matabeleland North, and Midlands,** briefly cloudy and warm with scattered thunderstorms and heavy rains. **Matabeleland South, Masvingo, Manicaland, south of Midland and Bulawayo Metropolitan provinces** should be partly cloudy and hot. Isolated showers are probable.

Overnight: Briefly cloudy and mild with light rain in the northern parts of the country.

Impacts & Actions to Take:

- **Do not attempt to cross flooded rivers, whether on foot or in a vehicle**
- **Plan your journey with weather in mind**
- **When thunder roars it is best to be indoors**



5-DAY FORECAST FOR MAJOR CITIES: MON 20 – FRI 24 JANUARY 2025

BULAWAYO

MON	TUE	WED	THU	FRI
28 19	28 18	29 18	30 18	30 18
>5mm	>0.5mm	>5.0mm	>5.0mm	>5.0mm

CHINHOYI

MON	TUE	WED	THU	FRI
31 20	30 19	30 20	29 20	31 21
>5mm	>15mm	>10.0mm	>5.0mm	>5.0mm

GWERU

MON	TUE	WED	THU	FRI
28 17	27 17	26 18	27 18	27 19
0.0mm	0.0mm	0.0mm	0.0mm	0.0mm

KADOMA

MON	TUE	WED	THU	FRI
31 18	29 18	29 19	30 21	27 21
>25mm	>15mm	>10.0mm	>15.0mm	>5.0mm

LUPANE

MON	TUE	WED	THU	FRI
31 20	29 20	31 21	32 21	33 22
>5mm	0.0mm	>10.0mm	>5.0mm	>5.0mm

MASVINGO

MON	TUE	WED	THU	FRI
29 19	30 19	31 19	29 20	27 20
0.0mm	0.05mm	>5mm	>5.0mm	>0.5mm

BINDURA

MON	TUE	WED	THU	FRI
29 18	28 18	29 19	30 19	30 18
>15mm	>15mm	>10.0mm	>15.0mm	>5.0mm

GWANDA

MON	TUE	WED	THU	FRI
28 18	30 18	28 18	31 18	32 18
0.0mm	5.0mm	10.0mm	5.0mm	5.0mm

HARARE

MON	TUE	WED	THU	FRI
30 18	29 18	28 17	30 18	29 17
>5mm	>5mm	>10.0mm	>10.0mm	>15.0mm

KWEKWE

MON	TUE	WED	THU	FRI
30 19	28 19	28 19	29 19	26 20
>25mm	>15mm	>10.0mm	>15.0mm	>5.0mm

MARONDERA

MON	TUE	WED	THU	FRI
28 16	28 16	27 16	28 15	29 15
>5mm	>15mm	>10.0mm	>15.0mm	>5.0mm

MUTARE

MON	TUE	WED	THU	FRI
28 18	29 18	28 18	27 19	28 19
>15mm	>15mm	>10.0mm	>15.0mm	>5.0mm



VICTORIA FALLS
7184741017



5-DAY FORECAST

FOR HOLIDAY RESORTS:

MON 20 – FRI 24 JANUARY 2025

BINGA

MON	TUE	WED	THU	FRI
30 23 >5mm	29 23 >5mm	29 22 >15.0mm	31 23 >15.0mm	32 23 >5.0mm

CHINHOYI CAVES

MON	TUE	WED	THU	FRI
31 20 15.0mm	30 20 15.0mm	30 21 20.0mm	29 21 5.0mm	31 21 5.0mm

CHIREZI/GONAREZHOU NAT. PARK

MON	TUE	WED	THU	FRI
30 21 >5mm	29 21 >5mm	28 22 >10.0mm	29 22 >15.0mm	31 21 >15.0mm

HWANGE NATIONAL PARK

MON	TUE	WED	THU	FRI
29 20 1.0mm	28 20 0.0mm	28 20 5.0mm	29 21 5.0mm	31 21 5.0mm

MATOPOS

MON	TUE	WED	THU	FRI
27 18 >5mm	29 18 >5mm	28 19 >5.0mm	29 19 >5.0mm	30 19 >5.0mm

VICTORIA FALLS

MON	TUE	WED	THU	FRI
29 19 15.0mm	27 20 10.0mm	27 20 15.0mm	28 20 5.0mm	29 20 5.0mm

CHIMANIMANI

MON	TUE	WED	THU	FRI
28 16 >5mm	28 16 >15mm	29 16 >10.0mm	30 16 >5.0mm	31 16 >5.0mm

GREAT ZIMBABWE

MON	TUE	WED	THU	FRI
29 19 0.0mm	30 19 0.0mm	31 19 5.0mm	29 19 5.0mm	28 20 0.5mm

HOT SPRINGS

MON	TUE	WED	THU	FRI
29 21 >15mm	28 21 >15mm	29 21 >10.0mm	30 22 >25.0mm	29 22 >15.0mm

KARIBA

MON	TUE	WED	THU	FRI
31 24 15.0mm	30 23 15.0mm	29 23 10.0mm	29 24 15.0mm	28 24 10.0mm

NYANGA

MON	TUE	WED	THU	FRI
25 15 >15mm	26 14 >15mm	26 15 >10.0mm	27 15 >25.0mm	27 14 >15.0mm

VUMBA

MON	TUE	WED	THU	FRI
28 14 5.0mm	27 15 5.0mm	28 15 5.0mm	29 15 10.0mm	28 16 5.0mm