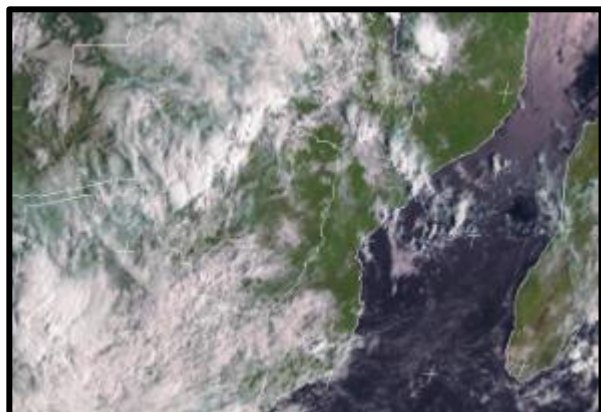


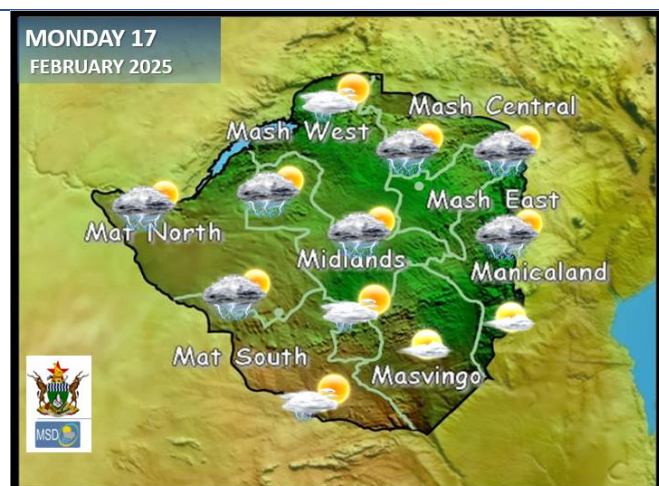
# Weather Report & Forecast

## SATELLITE-BASED GLANCE INTO THIS MORNING, SUNDAY 16 FEBRUARY 2025



Much of the country experienced scattered thunderstorms yesterday due to the current abundance of moisture in the atmosphere. Significant rainfall amounts were recorded in **Agritex Nyamweda(70mm), Lusulu Tsetse Control(55mm), Mhondoro (55mm), Gwanda (47mm), Kotwa Ardas Mudzi(47mm), Chibero (40mm), Binga (38mm), Masvingo (36mm), Tsunga Seke Ward 17 (35mm), Parkison Secondary School Shurugwi(47mm), Lupane (28mm), Chisumbanje (27mm), and Matopos (21mm).** Over the southern areas (**Masvingo, and the southern parts of Manicaland provinces**), light showers were experienced due to a cool, moist airflow. This morning, much of the country's western half was mostly cloudy, with mild morning conditions and isolated light rains and showers caused by moisture entering from Botswana. By the afternoon, much of the country was partly cloudy and warm, with scattered thundershowers in some areas.

## WEATHER FOR TOMORROW: MONDAY 17 FEBRUARY 2025



**All Mashonaland provinces, Harare Metropolitan, Midlands, northern parts of Manicaland and Matabeleland North provinces**

Partly cloudy and mild conditions in the morning with isolated light rain. Mostly cloudy and warm with scattered thunderstorms in the afternoon. Heavy rain is probable in places.

Actions to Take:

**Do not attempt to cross flooded rivers**

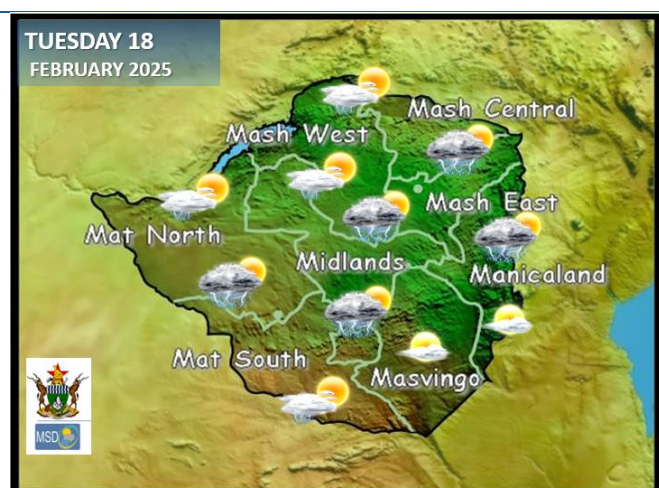
**All the remaining areas**

Mild conditions in the morning becoming partly cloudy and warm in the afternoon with isolated showers that may be thundery.

Actions to Take:

**Take proper shelter during thunderstorms.**

## WEATHER OUTLOOK FOR: TUESDAY 18 FEBRUARY 2025



**Areas along the main watershed (Matabeleland North, the Midlands, Mashonaland Central, Mashonaland East, and Manicaland).**

Partly cloudy and mild in the morning. Mostly cloudy and warm in the afternoon with scattered thunderstorms. Heavy rain is probable.

Actions to Take:

**Seek proper shelter during thunderstorms.**

**All other provinces**

Partly cloudy and mild conditions in the morning, gradually becoming warm in the afternoon. Isolated thundershowers are probable.



## 5-DAY FORECAST FOR MAJOR CITIES: MON 17 – FRID 21 FEBRUARY 2025

### BULAWAYO

MON	TUE	WED	THU	FRI
27 18 >10mm	28 18 20 20mm	30 18 10 10mm	29 18 10 10mm	29 19 10 10mm

### CHINHOYI

MON	TUE	WED	THU	FRI
29 20 20mm	30 19 20 20mm	31 20 20 20.0mm	29 19 20 20.0mm	28 18 10 10.0mm

### GWERU

MON	TUE	WED	THU	FRI
26 17 20.0mm	27 17 20 20.0mm	29 17 20 20.0mm	29 17 20 20.0mm	28 18 10 10.0mm

### KADOMA

MON	TUE	WED	THU	FRI
28 18 10.0mm	28 18 10 10.0mm	29 19 20 20.0mm	28 18 10 10.0mm	27 18 10 10.0mm

### LUPANE

MON	TUE	WED	THU	FRI
31 20 20mm	32 19 20 20mm	32 19 20 20mm	31 18 20 20.0mm	30 18 10 10.0mm

### MASVINGO

MON	TUE	WED	THU	FRI
28 19 0.5mm	29 19 5.0mm	28 20 10.0mm	29 20 10.0mm	30 19 5.0mm

### BINDURA

MON	TUE	WED	THU	FRI
28 18 20mm	29 18 20 20mm	30 19 20 20.0mm	29 18 10 10.0mm	30 18 20 20.0mm

### GWANDA

MON	TUE	WED	THU	FRI
28 19 0.5mm	30 19 10 10.0mm	31 19 20 20.0mm	29 19 15 15.0mm	29 20 10 10.0mm

### HARARE

MON	TUE	WED	THU	FRI
27 18 20mm	28 18 20 20.0mm	27 18 20 20.0mm	28 18 20 20.0mm	27 18 10 10.0mm

### KWEKWE

MON	TUE	WED	THU	FRI
29 19 20mm	30 19 20 20mm	30 19 20 20mm	29 20 20 20mm	28 19 10 10.0mm

### MARONDERA

MON	TUE	WED	THU	FRI
28 15 20mm	28 15 20 20.0mm	27 16 20 20.0mm	26 15 20 20.0mm	28 15 10 10.0mm

### MUTARE

MON	TUE	WED	THU	FRI
27 15 10mm	26 15 10.0mm	26 14 20.0mm	26 14 20.0mm	27 15 10.0mm



VICTORIA FALLS  
ZIMBABWE



## 5-DAY FORECAST

### FOR HOLIDAY RESORTS:

MON 17 – FRI 21 FEBRUARY 2025

#### BINGA

MON	TUE	WED	THU	FRI
29 22 >20mm	30 22 >20mm	31 21 >20mm	29 22 >10.0mm	28 22 >10.0mm

#### CHINHOYI CAVES

MON	TUE	WED	THU	FRI
29 20 >20mm	30 19 >20mm	31 20 >20mm	29 19 >10.0mm	28 18 >10.0mm

#### CHIREDDI/GONAREZHOU NAT. PARK

MON	TUE	WED	THU	FRI
32 22 >10.0mm	33 21 >10.0mm	34 20 >10.0mm	33 21 >10mm	31 21 >10mm

#### HWANGE NATIONAL PARK

MON	TUE	WED	THU	FRI
28 20 >20mm	29 20 >20mm	31 20 >20mm	29 20 >10mm	30 20 >10mm

#### MATOPOS

MON	TUE	WED	THU	FRI
27 19 >10.0mm	28 19 >10mm	29 18 >10.0mm	27 18 >10.0mm	28 17 >10.0mm

#### VICTORIA FALLS

MON	TUE	WED	THU	FRI
29 19 >20mm	30 19 >20mm	31 19 >20mm	29 20 >10.0mm	30 20 >10.0mm

#### CHIMANIMANI

MON	TUE	WED	THU	FRI
27 16 >10mm	28 16 >20.0mm	29 18 >20mm	28 18 >20.0mm	27 18 >20.0mm

#### GREAT ZIMBABWE

MON	TUE	WED	THU	FRI
28 19 >0.5mm	29 19 >5.0mm	30 20 >10mm	28 20 >10.0mm	39 20 >5.0mm

#### HOT SPRINGS

MON	TUE	WED	THU	FRI
30 18 >10mm	31 18 >10.0mm	32 19 >20.0mm	32 21 >20.0mm	31 20 >10.0mm

#### KARIBA

MON	TUE	WED	THU	FRI
31 24 >20mm	30 23 >20mm	30 24 >20mm	29 24 >10.0mm	29 24 >10.0mm

#### NYANGA

MON	TUE	WED	THU	FRI
24 15 >10mm	24 15 >20mm	25 16 >20mm	24 16 >20mm	24 16 >20mm

#### VUMBA

MON	TUE	WED	THU	FRI
27 15 >10mm	26 15 >10.0mm	25 15 >20mm	26 16 >20mm	26 15 >20mm