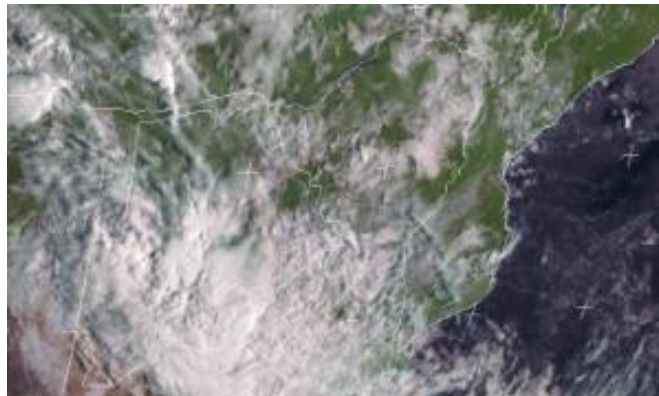




Weather Report & Forecast

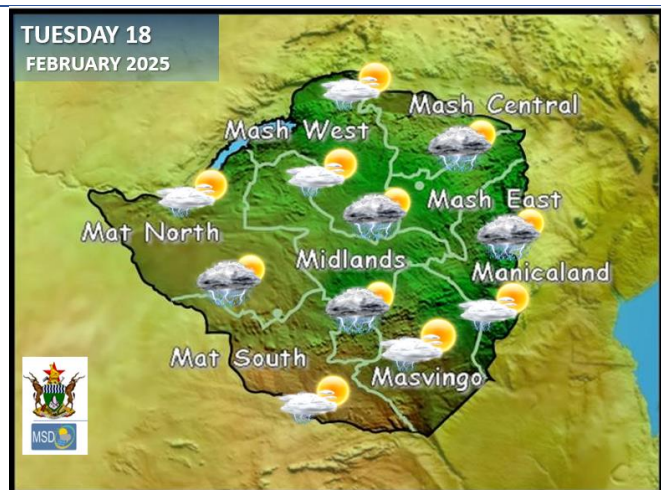
SATELLITE-BASED GLANCE INTO THIS MORNING, MONDAY 17 FEBRUARY 2025



Scattered thunderstorms occurred yesterday in the areas to the north and along the main watershed namely **Bulawayo Metropolitan, Matabeleland North, Midlands, Mashonaland West and Mashonaland Central** provinces. The highest rainfall recorded were **61mm (Selous), 40mm (Kwekwe), 36mm (Kariba), 33mm (Gweru), 31mm (Shurugwi), 29mm (Juru), 28mm (Kadoma), 26mm (Kanyemba), 20mm (Bulawayo), 18mm (Tsholotsho) and 12mm (Matopos)**. The Southern areas had light rain and drizzle with cool south easterly winds.

Today, it was mild at first and became warm by afternoon with brief cloudy periods and scattered thunderstorms in some places. Meanwhile, a thick cloud is slowly approaching the western parts of the country from Botswana.

WEATHER FOR TOMORROW: TUESDAY 18 FEBRUARY 2025



All Mashonaland provinces, Harare Metropolitan, Midlands, Manicaland, Bulawayo Metropolitan Matabeleland North and South Provinces

Mostly cloudy and mild for much of the day with scattered thunderstorms in the afternoon which might be heavier in places.

Actions to Take:

Do not attempt to cross flooded rivers

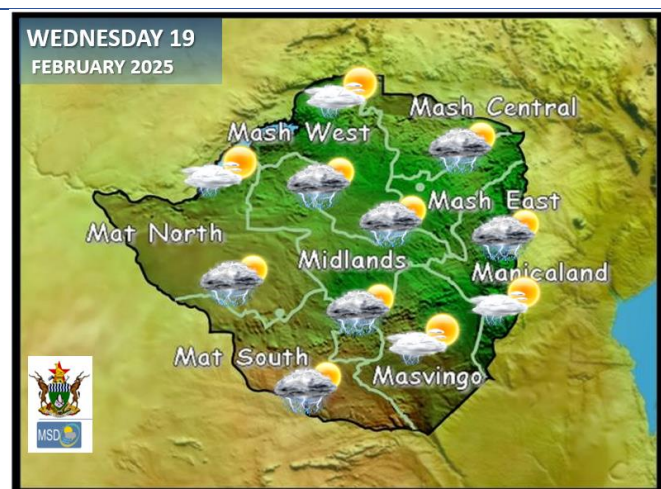
Masvingo Province

Partly cloudy and mild in the morning, becoming warm and cloudy by afternoon with isolated thundershowers.

Actions to Take:

Take proper shelter during thunderstorms.

WEATHER OUTLOOK FOR: WEDNESDAY 19 FEBRUARY 2025



Matabeleland South, Bulawayo Metropolitan and Midlands Provinces

Cloudy and warm, with widespread thunderstorms and strong winds. Some areas may receive rainfall exceeding 70 mm.

Actions to Take:

Seek proper shelter during thunderstorms.

Matabeleland North, Mashonaland West, Southern part of Manicaland, and Masvingo Provinces.

Partly cloudy and mild in the morning, becoming cloudy and warm with scattered thunderstorms in the afternoon.



5-DAY FORECAST FOR MAJOR CITIES: TUE 18 – SAT 22 FEBRUARY 2025

BULAWAYO

TUE	WED	THU	FRI	SAT
28 18 ☁️☀️ >10mm	29 18 ☁️☀️ >20mm	28 18 ☁️☀️ >10mm	27 18 ☁️☀️ >10mm	27 19 ☁️☀️ >10mm

CHINHOYI

TUE	WED	THU	FRI	SAT
28 20 ☁️☀️ >20mm	29 19 ☁️☀️ >20mm	30 20 ☁️☀️ >20.0mm	28 19 ☁️☀️ >20.0mm	28 18 ☁️☀️ >10.0mm

GWERU

TUE	WED	THU	FRI	SAT
26 17 ☁️☀️ >20.0mm	27 17 ☁️☀️ >20.0mm	29 17 ☁️☀️ >20.0mm	29 17 ☁️☀️ >20.0mm	28 18 ☁️☀️ >10.0mm

KADOMA

TUE	WED	THU	FRI	SAT
27 18 ☁️☀️ >10.0mm	26 18 ☁️☀️ >10.0mm	28 19 ☁️☀️ >20.0mm	28 18 ☁️☀️ >10.0mm	26 18 ☁️☀️ >10.0mm

LUPANE

TUE	WED	THU	FRI	SAT
31 20 ☁️☀️ >20mm	32 19 ☁️☀️ >20mm	32 19 ☁️☀️ >20mm	31 18 ☁️☀️ >20.0mm	30 18 ☁️☀️ >10.0mm

MASVINGO

TUE	WED	THU	FRI	SAT
29 19 ☁️☀️ >10.0mm	28 19 ☁️☀️ >5.0mm	28 20 ☁️☀️ >10.0mm	29 20 ☁️☀️ >10.0mm	30 19 ☁️☀️ >5.0mm

BINDURA

TUE	WED	THU	FRI	SAT
28 18 ☁️☀️ >20mm	29 18 ☁️☀️ >20mm	29 19 ☁️☀️ >20.0mm	29 18 ☁️☀️ >10.0mm	30 18 ☁️☀️ >20.0mm

GWANDA

TUE	WED	THU	FRI	SAT
29 19 ☁️☀️ >20mm	30 19 ☁️☀️ >20mm	30 19 ☁️☀️ >20.0mm	30 19 ☁️☀️ >15.0mm	29 20 ☁️☀️ >10.0mm

HARARE

TUE	WED	THU	FRI	SAT
27 18 ☁️☀️ >20mm	26 18 ☁️☀️ >20.0mm	28 18 ☁️☀️ >20.0mm	26 18 ☁️☀️ >20.0mm	26 18 ☁️☀️ >10.0mm

KWEKWE

TUE	WED	THU	FRI	SAT
27 19 ☁️☀️ >20mm	26 19 ☁️☀️ >20mm	28 19 ☁️☀️ >20mm	28 20 ☁️☀️ >20mm	26 19 ☁️☀️ >10.0mm

MARONDERA

TUE	WED	THU	FRI	SAT
28 15 ☁️☀️ >20mm	28 15 ☁️☀️ >20.0mm	27 16 ☁️☀️ >20.0mm	26 15 ☁️☀️ >20.0mm	28 15 ☁️☀️ >10.0mm

MUTARE

TUE	WED	THU	FRI	SAT
27 15 ☁️☀️ >10mm	26 15 ☁️☀️ >10.0mm	26 14 ☁️☀️ >20.0mm	26 14 ☁️☀️ >20.0mm	27 15 ☁️☀️ >10.0mm



VICTORIA FALLS



5-DAY FORECAST

FOR HOLIDAY RESORTS:

TUE 18 – SAT 22 FEBRUARY 2025

BINGA

TUE	WED	THU	FRI	SAT
30 22 >20mm	31 22 >20mm	31 21 >20mm	29 22 >10.0mm	28 22 >10.0mm

CHINHOYI CAVES

TUE	WED	THU	FRI	SAT
28 20 >20mm	29 19 >20mm	30 20 >20mm	28 19 >10.0mm	28 18 >10.0mm

CHIREDDI/GONAREZHOU NAT. PARK

TUE	WED	THU	FRI	SAT
30 22 >10.0mm	30 21 >10.0mm	31 20 >10.0mm	29 21 >10mm	31 21 >10mm

HWANGE NATIONAL PARK

TUE	WED	THU	FRI	SAT
28 20 >20mm	29 20 >20mm	30 20 >20mm	29 20 >10mm	30 20 >10mm

MATOPOS

TUE	WED	THU	FRI	SAT
27 19 >10.0mm	28 19 >10mm	29 18 >10.0mm	27 18 >10.0mm	28 17 >10.0mm

VICTORIA FALLS

TUE	WED	THU	FRI	SAT
29 19 >20mm	30 19 >20mm	31 19 >20mm	29 20 >10.0mm	30 20 >10.0mm

CHIMANIMANI

TUE	WED	THU	FRI	SAT
28 16 >10mm	27 16 >20.0mm	29 18 >20mm	28 18 >20.0mm	27 18 >20.0mm

GREAT ZIMBABWE

TUE	WED	THU	FRI	SAT
29 19 >10mm	29 19 >5.0mm	30 20 >10mm	28 20 >10.0mm	29 20 >5.0mm

HOT SPRINGS

TUE	WED	THU	FRI	SAT
32 18 >10mm	31 18 >10.0mm	32 19 >20.0mm	32 21 >20.0mm	31 20 >10.0mm

KARIBA

TUE	WED	THU	FRI	SAT
31 24 >20mm	30 23 >20mm	30 24 >20mm	29 24 >10.0mm	29 24 >10.0mm

NYANGA

TUE	WED	THU	FRI	SAT
24 15 >10mm	24 15 >20mm	25 16 >20mm	24 16 >20mm	24 16 >20mm

VUMBA

TUE	WED	THU	FRI	SAT
26 15 >10mm	27 15 >10.0mm	25 15 >20mm	26 16 >20mm	26 15 >20mm