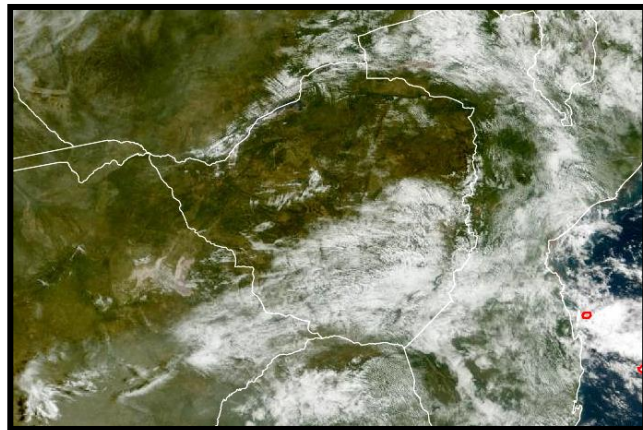


SATELLITE-BASED GLANCE INTO THIS MORNING, THURSDAY 20 MARCH 2025



It was cloudy, windy and cool over Bulawayo Metropolitan, Matabeleland South, southern Midlands (Mberengwa through to Chirumhanzu and Gweru Districts), southern areas of Mashonaland East (districts such as C), Masvingo and Manicaland Provinces. This was due to relatively cool and moist winds; however, by evening these winds were subsiding.

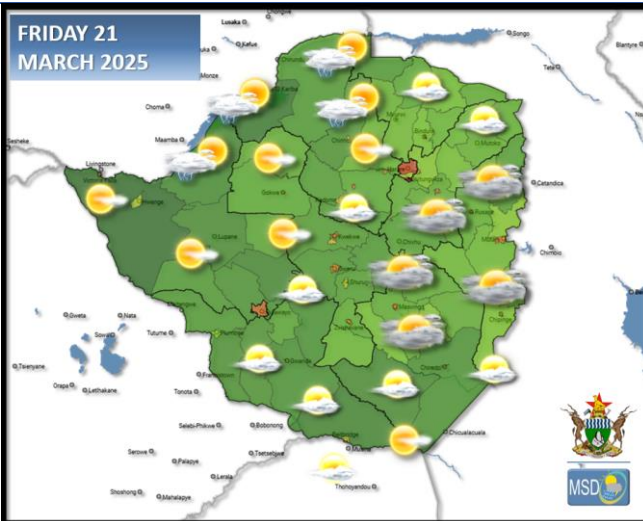
SUNDAY, 23 MARCH:

WORLD METEOROLOGICAL DAY

[CELEBRATION: FRIDAY 21 MARCH 2025]



WEATHER FOR TOMORROW: FRIDAY 21 MARCH 2025



Manicaland Province and north-eastern parts of Masvingo Province into southern Mashonaland East.

Cloudy and mild at first, becoming less cloudy and warm by noon. Cool towards evening.

Northern parts of Matabeleland North, all Mashonaland and Harare Metropolitan provinces.

Briefly cloudy and warm with isolated thunder-showers in the afternoon though, mostly clear skies and mild at first.

Actions to Take:

Move to safe shelter whenever a thunderstorm threatens.

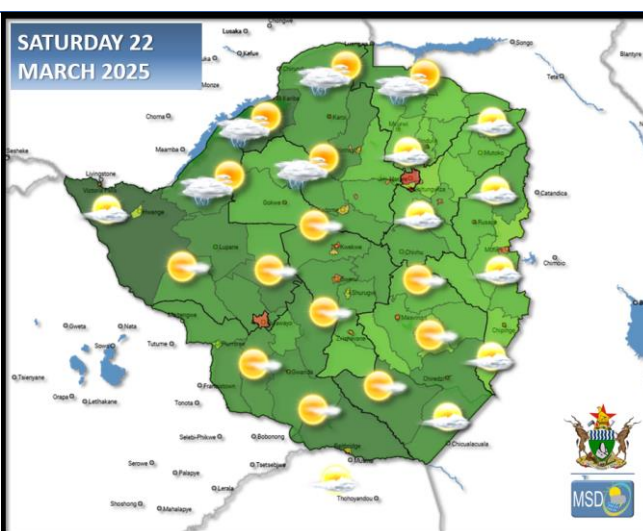
Midlands, Bulawayo Metropolitan, Matabeleland South, southern areas of Matabeleland Province

Cloudy, windy and cool in the morning with rain and drizzle. Becoming less cloudy and warm in the afternoon.

Actions to Take:

Keep hydrated and wear a sunhat if there is need to be outdoors for a long period.

WEATHER OUTLOOK FOR: SATURDAY 22 MARCH 2025



Mashonaland West and Central, Harare Metropolitan, northern Midlands (Gokwe North and South), and Matabeleland North provinces (Binga District).

Briefly cloudy and warm by afternoon with a chance of light showers that could be thundery in places. Mild early morning and late evening.

Actions to Take:

Stay hydrated.

Much of Matabeleland Province, Bulawayo Metropolitan, Matabeleland South, much of Midlands, Mashonaland East, Masvingo and Manicaland Provinces

Mostly sunny and warm by day, but mild overnight.

Actions to Take:

Stay hydrated during the day and where possible wear a sunhat.



5-DAY FORECAST FOR MAJOR CITIES:

BULAWAYO

FRI	SAT	SUN	MON	TUE
28 15	29 16	29 16	30 17	30 17
0.1mm	0.0mm	0.0mm	0.0mm	0.0mm

CHINHOYI

FRI	SAT	SUN	MON	TUE
29 19	30 20	30 20	31 19	31 19
0.0mm	0.0mm	0.0mm	0.0mm	0.0mm

GWERU

FRI	SAT	SUN	MON	TUE
26 14	26 15	27 15	27 16	27 16
0.0mm	0.0mm	0.0mm	0.0mm	0.0mm

KADOMA

FRI	SAT	SUN	MON	TUE
29 16	30 17	30 17	31 18	31 18
0.0mm	0.0mm	0.0mm	0.0mm	0.0mm

LUPANE

FRI	SAT	SUN	MON	TUE
31 17	32 17	31 18	30 16	30 16
0.1mm	0.0mm	0.0mm	0.0mm	0.0mm

MASVINGO

FRI	SAT	SUN	MON	TUE
26 15	27 16	29 16	30 17	30 17
0.0mm	0.0mm	0.0mm	0.0mm	0.0mm

BINDURA

FRI	SAT	SUN	MON	TUE
28 16	27 17	28 18	28 18	28 18
0.0mm	0.0mm	0.0mm	0.0mm	0.0mm

GWANDA

FRI	SAT	SUN	MON	TUE
27 15	28 16	29 16	30 17	30 17
0.0mm	0.0mm	0.0mm	0.0mm	0.0mm

HARARE

FRI	SAT	SUN	MON	TUE
28 17	29 19	29 21	27 18	27 18
0.0mm	0.0mm	0.0mm	0.0mm	0.0mm

KWEKWE

FRI	SAT	SUN	MON	TUE
29 15	30 16	30 26	31 16	31 16
0.0mm	0.0mm	0.0mm	0.0mm	0.0mm

MARONDERA

FRI	SAT	SUN	MON	TUE
26 15	27 16	27 16	26 14	26 14
0.0mm	0.0mm	0.0mm	0.0mm	0.0mm

MUTARE

FRI	SAT	SUN	MON	TUE
25 19	26 20	27 21	28 18	28 18
0.0mm	0.0mm	0.0mm	0.0mm	0.0mm

FRI 21 – TUE 25 MARCH 2025



VICTORIA FALLS
ZIMBABWE



5-DAY FORECAST

FOR HOLIDAY RESORTS:

FRI 21 – TUE 25 MARCH 2025

BINGA

FRI	SAT	SUN	MON	TUE
31 20	32 21	32 21	33 22	33 22
0.0mm	0.0mm	0.0mm	0.0mm	0.0mm

CHINHOYI CAVES

FRI	SAT	SUN	MON	TUE
29 19	30 20	30 20	31 20	31 20
0.0mm	0.0mm	0.0mm	0.0mm	0.0mm

CHIREDDI/GONAREZHOU NAT. PARK

FRI	SAT	SUN	MON	TUE
27 18	29 18	28 19	28 20	28 20
0.0mm	0.0mm	0.0mm	0.0mm	0.0mm

HWANGE NATIONAL PARK

FRI	SAT	SUN	MON	TUE
29 20	29 22	28 23	28 19	28 19
0.1mm	0.0mm	0.0mm	0.0mm	0.0mm

MATOPOS

FRI	SAT	SUN	MON	TUE
26 15	27 16	27 16	28 17	28 17
0.1mm	0.0mm	0.0mm	0.0mm	0.0mm

VICTORIA FALLS

FRI	SAT	SUN	MON	TUE
26 18	27 17	28 19	29 19	28 18
0.0mm	0.1mm	0.0mm	0.0mm	0.0mm

CHIMANIMANI

FRI	SAT	SUN	MON	TUE
26 18	26 19	27 20	27 18	27 18
0.0mm	0.0mm	0.0mm	0.0mm	0.0mm

GREAT ZIMBABWE

FRI	SAT	SUN	MON	TUE
26 15	27 16	29 16	30 17	30 17
0.0mm	0.0mm	0.0mm	0.0mm	0.0mm

HOT SPRINGS

FRI	SAT	SUN	MON	TUE
29 16	28 15	29 16	29 15	29 15
0.0mm	0.0mm	0.0mm	0.0mm	0.0mm

KARIBA

FRI	SAT	SUN	MON	TUE
32 21	33 23	32 24	31 25	31 25
0.0mm	0.0mm	0.0mm	0.0mm	0.0mm

NYANGA

FRI	SAT	SUN	MON	TUE
25 11	26 12	27 13	27 14	27 14
0.0mm	0.0mm	0.0mm	0.0mm	0.0mm

VUMBA

FRI	SAT	SUN	MON	TUE
24 15	26 16	27 16	28 15	28 15
0.0mm	0.0mm	0.0mm	0.0mm	0.0mm



1 DAYS TO CELEBRATION