

WEEKLY RAINFALL BULLETIN

RELEASED: 19 FEBRUARY 2025

SEASON: 2024-2025

VALID: 19 FEBRUARY TO 26 FEBRUARY 2025

WEEKLY RAINFALL BULLETIN

BULLETIN N°15

Contents

Summary of the past week.....	2
Seasonal Accumulated Precipitation.....	2
Normal Precipitation Percentage.....	3
Evaporation.....	3
Weather Outlook for the Week Ending 26-02-2025.....	4

for more information and daily update follow us on:

Twitter: <https://twitter.com/MSDZIM>

Facebook: <https://www.facebook.com/Meteorological-Services-Department-of-Zimbabwe-1466334176961651/>

SUMMARY OF PAST WEEK: 12 - 19 FEBRUARY 2025

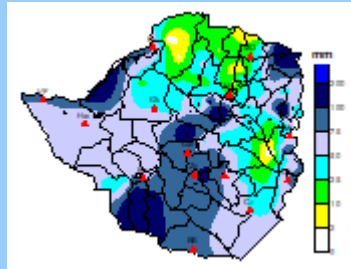


FIGURE 1: WEEKLY RAINFALL TOTALS: 12 -19 FEBRUARY 2025

Matabeleland North, Bulawayo Metropolitan, Matabeleland South, parts of Midlands, Masvingo, Manicaland and Mashonaland East Provinces received rainfall totals ranging from 50mm to 100mm (Fig 1). There were parts of northern areas of the country, Masvingo and Manicaland that received weekly totals below 25mm as shown by the cyan, green and yellow colours. The rainfall received was mainly due to the effects of the cloud band system which moved from the western countries (such as Botswana) into the country and the ITCZ. Some places received rainfall above 75mm in 24 hours: Mutasa (154mm), Mudzi ARDAS (98mm) and Binga (75mm).

SEASONAL ACCUMULATED RAINFALL: 1 OCT – 19 FEBRUARY 2025

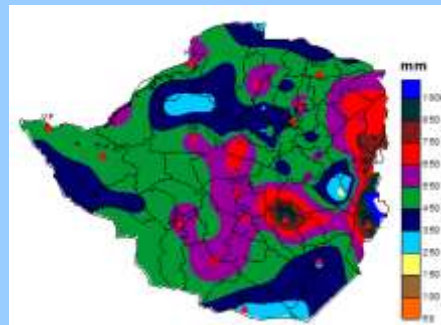


FIGURE 2: SEASONAL RAINFALL TOTALS: 1 OCTOBER -19 FEBRUARY 2025

Figure 2 shows the spatial distribution of the accumulated rainfall received so far since October 1, 2024. The rainfall received in January and early to mid-February has significantly contributed to the seasonal totals. Much of the country has recorded cumulative rainfall in the range of 350mm and 750mm since 1 October 2024. Parts of Masvingo and Manicaland have received cumulative rainfall of 850mm and above whilst parts of Beitbridge, Gokwe and Buhera have seasonal totals below 250mm.

SEASONAL RAINFALL PERCENTAGE OF NORMAL: 1 OCT- 19 FEBRUARY 2024

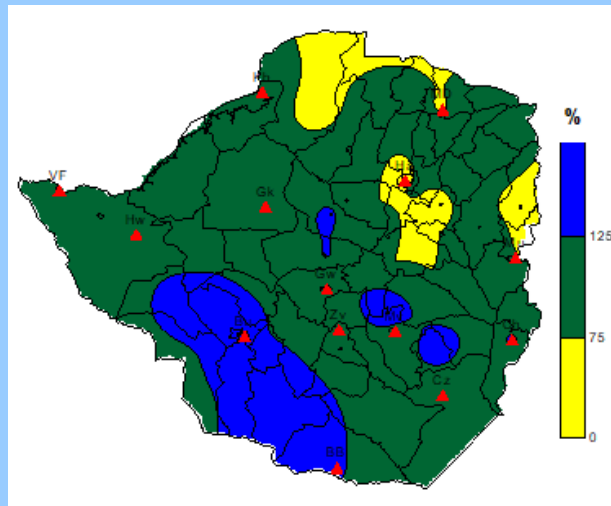


FIGURE 3: ACCUMULATION RAINFALL AS PERCENTAGE OF AVERAGE: 1 OCTOBER -19 FEBRUARY 2025

Much of the country has received seasonal rainfall in the normal range, as indicated by the green areas, with only a few locations in the Mashonaland and northern parts of Manicaland receiving below-average rainfall, shown in yellow (Figure 3). Wetter conditions have been experienced in Matabeleland South resulting in above-average rainfall received (blue coloured region). An improvement in the distribution of the rainfall in January and first and second decad of February has contributed to seasonal performance so far.

WEEKLY EVAPORATION 12 FEBRUARY- 19 FEBRUARY 2025

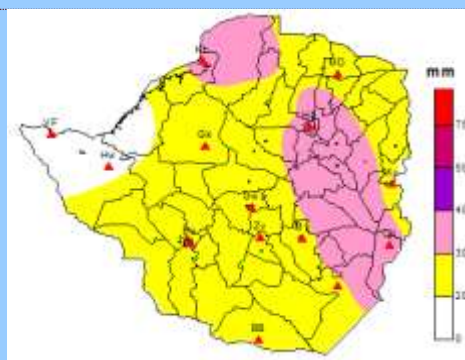


FIGURE 4: WEEKLY EVAPORATION: 12 -19 FEBRUARY 2025

Weekly evaporation amounts below 30mm were recorded cross the country as indicated in Figure 4. This indicates a decrease from the previous week when evaporation rates were above 40mm in most parts of the country. This is mainly attributed to the cloudiness that prevailed across the country which resulted in reduced daytime temperatures during the review week.

WEATHER OUTLOOK FOR THE PERIOD: 20 - 26 FEBRUARY 2025.

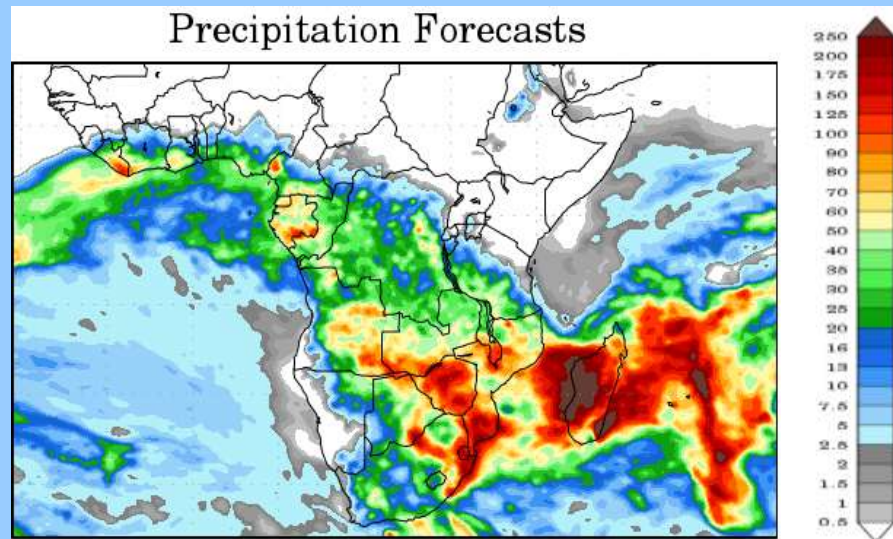


FIGURE 5: PRECIPITATION FORECAST: 19 - 26 FEBRUARY 2025

Widespread thunderstorms are expected across the country during the forecast period with the highest rainfall across the central parts of the country (central watershed). Weekly rainfall above 70mm is projected for most parts of the country (Fig 7).

Note

There are increased chances of localised flooding in places given the wet conditions that are persisting.