

WEEKLY RAINFALL BULLETIN

RELEASED: 26 FEBRUARY 2025

SEASON: 2024-2025

VALID: 26 FEBRUARY TO 05 MARCH 2025

WEEKLY RAINFALL BULLETIN

BULLETIN N°18

Contents

Summary of the past week.....	2
Seasonal Accumulated Precipitation.....	2
Normal Precipitation Percentage.....	3
Evaporation.....	3
Weather Outlook for the Week Ending 05-03-2025.....	4

for more information and daily update follow us on:

Twitter: <https://twitter.com/MSDZIM>

Facebook: <https://www.facebook.com/Meteorological-Services-Department-of-Zimbabwe-1466334176961651/>

SUMMARY OF PAST WEEK: 19 - 26 FEBRUARY 2025

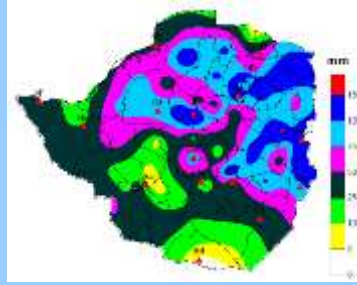


FIGURE 1: WEEKLY RAINFALL TOTALS: 19 -26 FEBRUARY 2025

The bulk of the country (northern and eastern provinces) received weekly rainfall totals ranging between 50mm and 100mm. The Matabelelands, Masvingo, Bulawayo Metropolitan and Midlands had weekly totals of 25mm and below as shown by the light and dark green coloured regions in Figure 1.

SEASONAL ACCUMULATED RAINFALL: 1 OCTOBER 2024– 26 FEBRUARY 2025

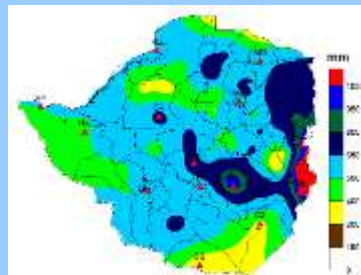


FIGURE 2: SEASONAL RAINFALL TOTALS: 1 OCTOBER -26 FEBRUARY 2025

Much of the country has recorded cumulative rainfall in the range of 500mm and above since 1 October 2024. Parts of Masvingo, Manicaland and Mashonaland East Provinces have received cumulative rainfall of 850mm and above with areas in Manicaland having seasonal totals of 1050mm. However, parts of Matabeleland South, Masvingo and Matabeleland North have seasonal totals below 400mm as shown by the green and yellow colours. The rainfall received in January and most of February has significantly contributed to the seasonal totals

SEASONAL RAINFALL PERCENTAGE OF NORMAL: 1 OCTOBER 2024- 26 FEBRUARY 2025



FIGURE 3: ACCUMULATION RAINFALL AS PERCENTAGE OF AVERAGE: 1 OCTOBER -26 FEBRUARY 2025

Much of the country has received seasonal rainfall in the normal range, as indicated by the green areas, with Hurungwe and Mbire receiving below-average rainfall, shown in yellow (Figure 3). Wetter conditions have been experienced in Matabeleland South, some areas of Midlands, Masvingo, Manicaland and Mashonaland East Provinces resulting in above-average rainfall received (blue coloured region). An improvement in the distribution of the rainfall in January and most of February has contributed to the seasonal performance so far.

WEEKLY EVAPORATION 19 FEBRUARY- 26 FEBRUARY 2025

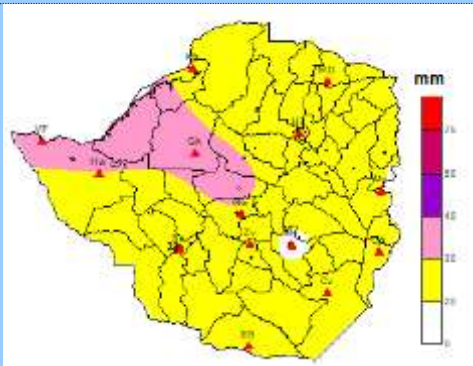
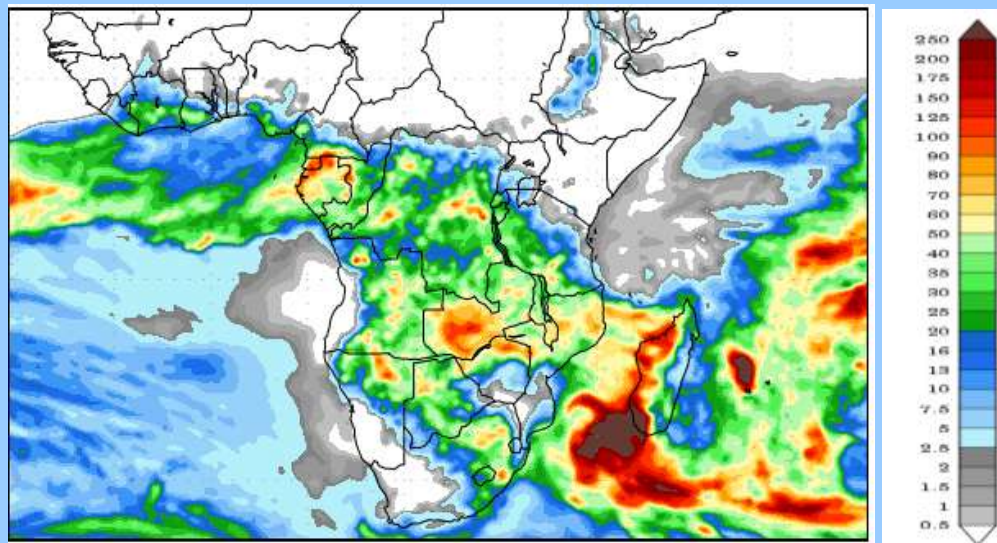


FIGURE 4: WEEKLY EVAPORATION: 19 -26 FEBRUARY 2025

Weekly evaporation amounts below 30mm were recorded across the country as shown in Figure 4 with most parts of the country having evaporation amounts of 20mm. This is mainly attributed to the cloudiness that prevailed across the country which resulted in reduced daytime temperatures during the week under review.

WEATHER OUTLOOK FOR THE PERIOD: 26 FEBRUARY- 05 MARCH 2025.



Scattered thunderstorms are expected over some parts of Matabeleland North, Midlands, Manicaland and all Mashonaland Provinces during the forecast period. Weekly rainfall above 70mm is expected in these areas (Fig 7). In the southern provinces of the country rainfall amounts are anticipated to decrease with partly cloudy and warm conditions. Isolated thunderstorms are still anticipated in some areas.

Note rainfall amounts are decreasing the whole country.