

WEEKLY RAINFALL BULLETIN

RELEASED: 05 MARCH 2025

SEASON: 2024-2025

VALID: 05 MARCH TO 12 MARCH 2025

WEEKLY RAINFALL BULLETIN

BULLETIN N°18

Contents

Summary of the past week.....	2
Seasonal Accumulated Precipitation.....	2
Normal Precipitation Percentage.....	3
Evaporation.....	3
Weather Outlook for the Week Ending 12-03-2025.....	4

for more information and daily update follow us on:

Twitter: <https://twitter.com/MSDZIM>

Facebook: <https://www.facebook.com/Meteorological-Services-Department-of-Zimbabwe-1466334176961651/>

SUMMARY OF PAST WEEK: 26 FEBRUARY – 05 MARCH 2025

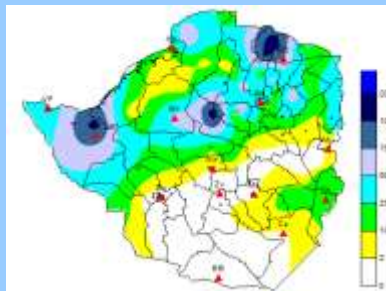


FIGURE 1: WEEKLY RAINFALL TOTALS: 26 FEBRUARY – 05 MARCH 2025

Weekly rainfall totals (Fig 1(a)) shows that not much rainfall was received during the week ending 05 March 2025. The southern half received the least rainfall amounts of below 25mm while the northern parts received slightly higher amounts above 25mm. There were a few areas that had above 75mm in these parts.

SEASONAL ACCUMULATED RAINFALL: 1 OCTOBER 2024 – 05 MARCH 2025

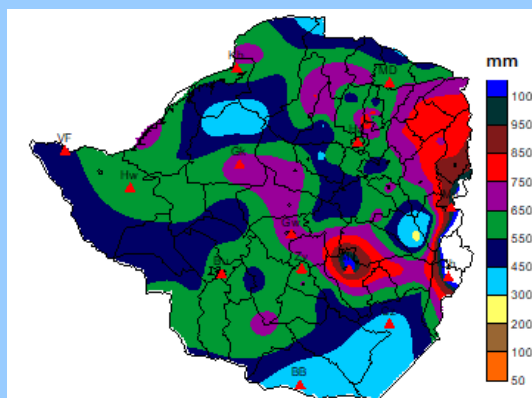


FIGURE 2: SEASONAL RAINFALL TOTALS: 1 OCTOBER - 05 MARCH 2025

The greater part of the country has received seasonal rainfall in the range 550mm to 650mm (green) (Fig 2). However, parts of Matabeleland South, Masvingo and all Mashonaland Provinces have seasonal totals below 450mm (cyan).

SEASONAL RAINFALL PERCENTAGE OF NORMAL: 1 OCTOBER 2024- 05 MARCH 2025

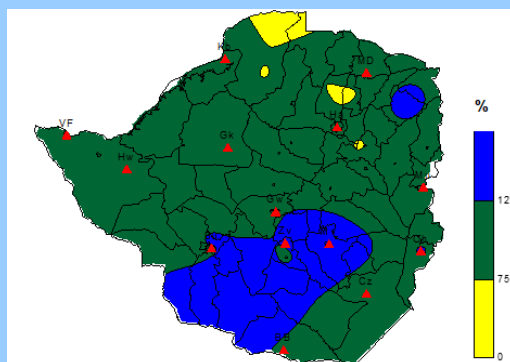


FIGURE 3: ACCUMULATION RAINFALL AS PERCENTAGE OF AVERAGE: 1 OCTOBER -05 MARCH 2025

Much of the country has received seasonal rainfall in the normal range, as indicated by the green areas, with Hurungwe and Mbire receiving below-average rainfall, shown in yellow (Figure 3). Matabeleland South, some areas of Midlands, Masvingo and Mashonaland East Provinces received above-average rainfall (blue coloured region). An improvement in the distribution of the rainfall in January and most of February has contributed to the seasonal performance so far.

WEEKLY EVAPORATION 26 FEBRUARY – 05 MARCH 2025

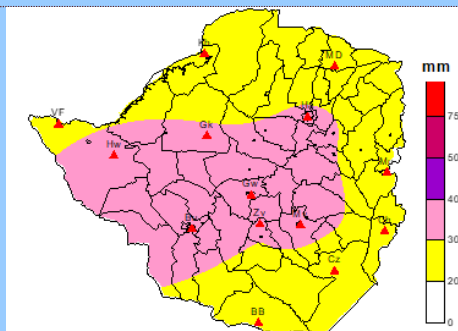


FIGURE 4: WEEKLY EVAPORATION: 26 FEBRUARY – 05 MARCH 2025

Weekly evaporation rates were generally in the range 20mm - 30mm with the exception of an area covering parts of Matabelelands, Midlands and Mashonaland where these were higher (30mm – 40mm) (Figure 4). The low evaporation rates are mainly attributed to the cloudiness that prevailed across the country which resulted in reduced daytime temperatures during the week under review.

WEATHER OUTLOOK FOR THE PERIOD: 05 MARCH - 12 MARCH 2025.

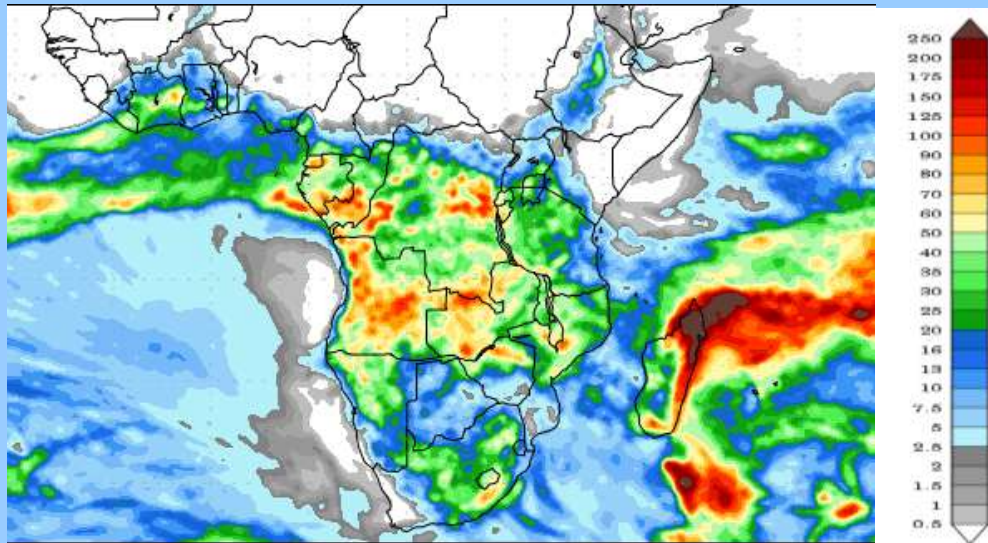


FIGURE 5: PRECIPITATION FORECAST: 05 MARCH - 12 MARCH 2025

The northern parts are expected to experience isolated thunderstorms with a chance of localised heavy rainfall. These places include Matabeleland North, all Mashonaland, northern parts of Midlands and Harare Metropolitan Provinces. However, the southern parts of the country are expected to experience partly cloudy conditions for the bulk of the forecast period with a chance of isolated light showers.