

WEEKLY RAINFALL BULLETIN

RELEASED: 26 MARCH 2025

SEASON: 2024-2025

VALID: 26 MARCH TO 02 APRIL 2025

WEEKLY RAINFALL BULLETIN

BULLETIN N°21

Contents

Summary of the past week.....	2
Seasonal Accumulated Precipitation.....	2
Normal Precipitation Percentage.....	3
Evaporation.....	3
Weather Outlook for the Week Ending 02-04-2025.....	4

for more information and daily update follow us on:

X: <https://x.com/MSDZIM>

Facebook: <https://www.facebook.com/Meteorological-Services-Department-of-Zimbabwe-1466334176961651/>

Website: <https://www.weatherzw.org.zw>

SUMMARY OF PAST WEEK: 19 - 26 MARCH 2025

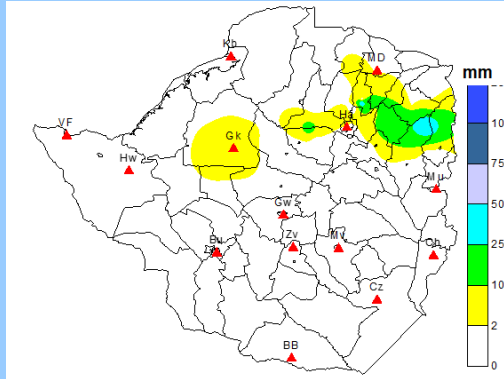


FIGURE 1: WEEKLY RAINFALL TOTALS: 19 -26 MARCH 2025

Rainfall totals between 2–25 mm were recorded in some areas of Midlands, Mashonaland East, Harare Metropolitan, Mashonaland West, Mashonaland Central, and Midlands, as illustrated in Figure 1. The rest of the country remained dry throughout the week.

SEASONAL ACCUMULATED RAINFALL: 1 OCTOBER 2024– 26 MARCH 2025

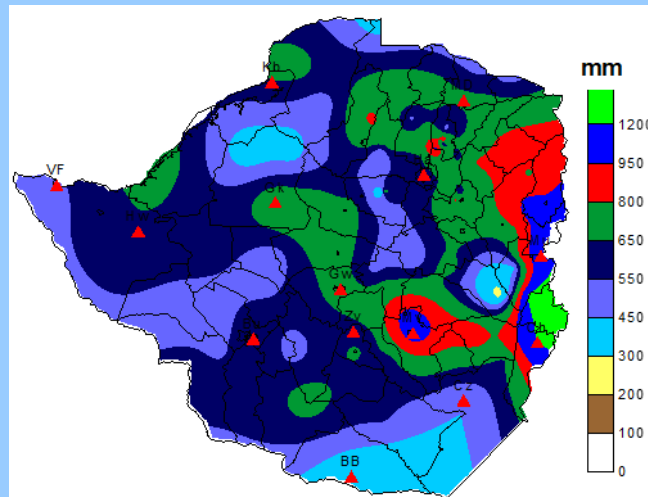


FIGURE 2: SEASONAL RAINFALL TOTALS: 1 OCTOBER -26 MARCH 2025

The majority of the country has recorded seasonal rainfall totals exceeding 450mm, with the bulk of areas receiving between 550-650mm. Higher cumulative rainfall (800mm+) has been observed across parts of Masvingo, Manicaland, and Mashonaland East Provinces, with some areas in Manicaland reaching seasonal totals of 1200mm (indicated by light green shading in Figure 2). However, isolated patches in Matabeleland South, Masvingo, Manicaland, and Midlands have recorded seasonal totals of less than 300mm (shown in cyan blue on Figure 2).

The significant rainfall received during January and most of February contributed substantially to the seasonal accumulations, though March saw a notable decrease in precipitation.

SEASONAL RAINFALL PERCENTAGE OF NORMAL: 1 OCTOBER 2024- 26 MARCH 2025

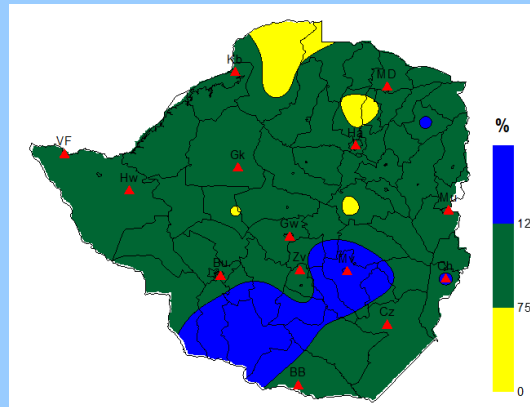


FIGURE 3: ACCUMULATION RAINFALL AS PERCENTAGE OF AVERAGE: 1 OCTOBER -26 MARCH 2025

Most of the country has experienced normal seasonal rainfall, as shown by the green shaded area in Figure 3. However, there are parts of Mashonaland Central and Mashonaland West that have received below-average rainfall (yellow). In contrast, wetter conditions leading to above-average rainfall (blue shaded areas) have been observed across Matabeleland South, sections of Midlands, Masvingo, Manicaland, and Mashonaland East. While improved rainfall distribution during January and most of February supported seasonal performance, March contributed significantly less rainfall, affecting the overall spatial and temporal distribution patterns. This late-season reduction has moderated some of the earlier gains in cumulative rainfall totals across affected regions.

WEEKLY EVAPORATION 12 MARCH - 26 MARCH 2025

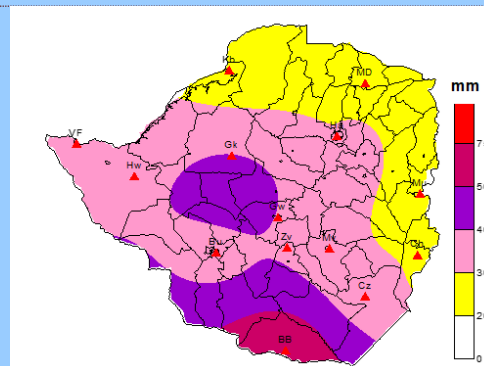


FIGURE 4: WEEKLY EVAPORATION: 19 -26 MARCH 2025

Weekly evaporation amounts ranged between 20–30 mm across all Mashonaland Provinces and Manicaland, as indicated by the yellow shading in Figure 4. The remaining provinces recorded evaporation above 30 mm, with the highest values observed in Matabeleland South Province, represented by deep purple in the figure 4.

In the southern and western regions of the country, evaporation continues to rise due to predominantly clear skies and hot conditions.

WEATHER OUTLOOK FOR THE PERIOD: 26 MARCH- 02 APRIL 2025.

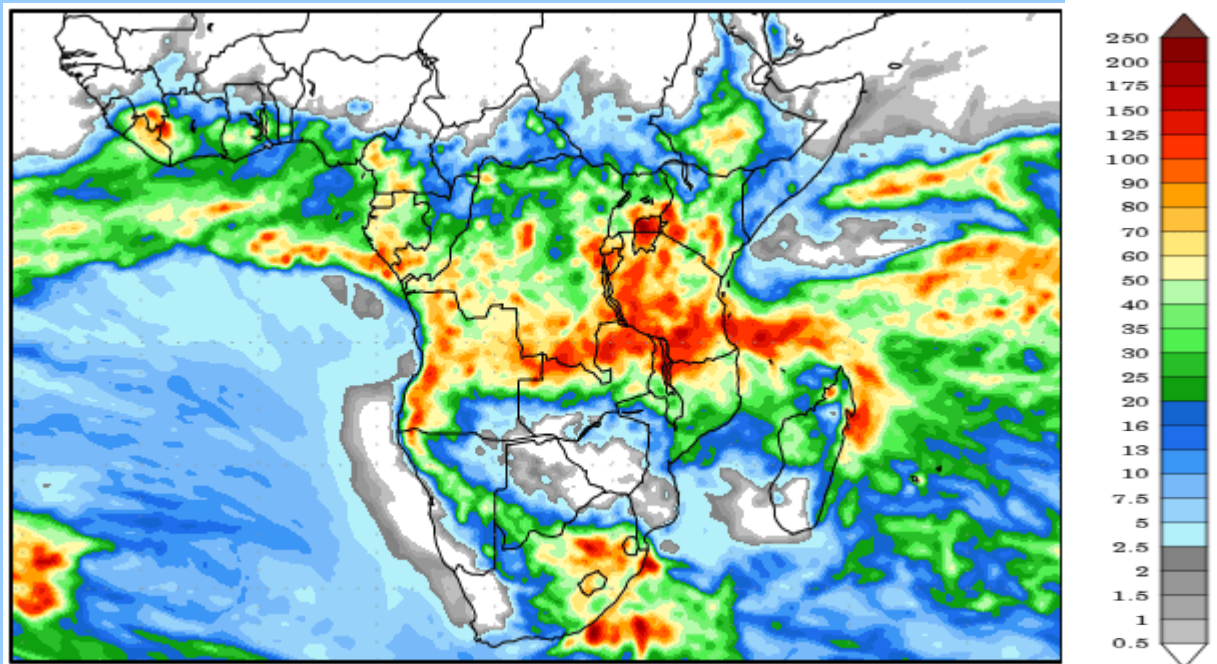


FIGURE 5: PRECIPITATION FORECAST: 26 MARCH- 02 APRIL 2025

Isolated thunderstorms are expected across all Mashonaland provinces, northern Midlands, Harare Metropolitan, and Manicaland during the forecast period. These areas are projected to receive weekly rainfall totals below 10 mm, as illustrated in Figure 7.

For the remainder of the country, conditions will remain partly cloudy and hot, with a chance of isolated thunderstorms in localized areas.