



# Meteorological Services Department



*Minimizing Risks through Science*

## WEEKLY RAINFALL BULLETIN

**PUBLISHED:** 02 APRIL 2025

**RAINFALL SEASON:** 01 OCTOBER 2024-APRIL 2025

**FORECAST PERIOD:** 02 APRIL TO 09 APRIL 2025

## WEEKLY RAINFALL BULLETIN

**BULLETIN N°22 of rainfall Season 2024/2025**



## Contents

Summary of the past week.....	2
Seasonal Accumulated Precipitation.....	2
Normal Precipitation Percentage.....	3
Evaporation.....	3
Weather Outlook for the Week Ending 09-04-2025.....	4

**for more information and weather updates follow us on:**

**X:** <https://x.com/MSDZIM>

**Facebook:** <https://www.facebook.com/Meteorological-Services-Department-of-Zimbabwe-1466334176961651/>

**Website:** <https://www.weatherzw.org.zw>



**+263778125911**



## SUMMARY OF PAST WEEK: 26 MARCH - 02 APRIL 2025

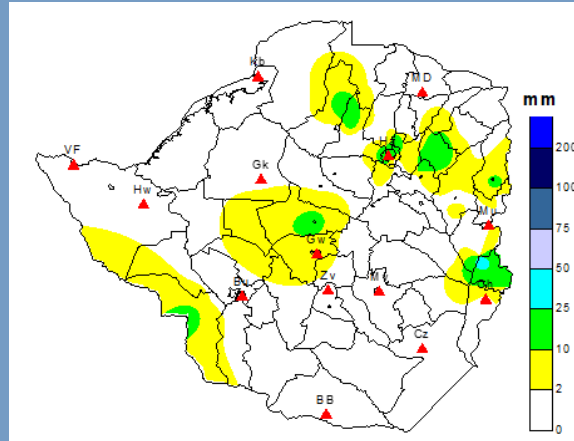


FIGURE 1: WEEKLY RAINFALL TOTALS: 26 MARCH -02 APRIL 2025

Patches of rainfall totals between 2–25 mm were recorded in some areas of Matabeleland North, Midlands, all Mashonaland Provinces, Harare Metropolitan, Bulawayo Metropolitan, and Manicaland as illustrated in Figure 1. The rest of the country remained dry throughout the week.

## SEASONAL ACCUMULATED RAINFALL: 1 OCTOBER 2024– 02 APRIL 2025

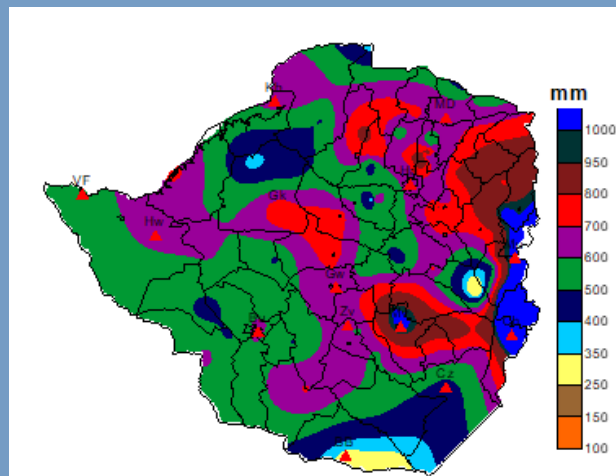


FIGURE 2: SEASONAL RAINFALL TOTALS: 1 OCTOBER -02 APRIL 2025

The majority of the country has recorded seasonal rainfall totals exceeding 500mm. Higher cumulative rainfall (800mm+) has been observed across parts of Masvingo, Manicaland, and Mashonaland East Provinces, with some areas in Manicaland reaching seasonal totals of 1000mm (indicated by royal blue shading in Figure 2). However, isolated patches in Matabeleland South, Masvingo and Manicaland have recorded seasonal totals of less than 350mm (shown in cyan blue on Figure 2).

The significant rainfall received during January and most of February contributed substantially to the seasonal accumulations, though March saw a notable decrease in precipitation.

## SEASONAL RAINFALL PERCENTAGE OF NORMAL: 1 OCTOBER 2024- 02 APRIL 2025

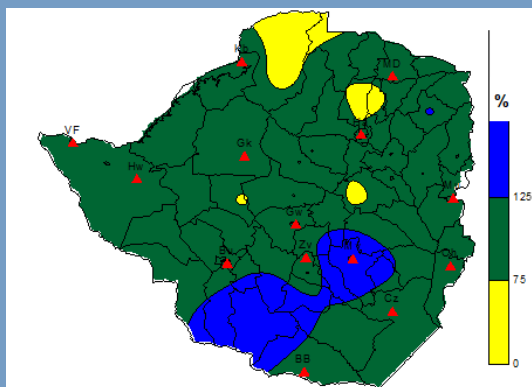


FIGURE 3: ACCUMULATION RAINFALL AS PERCENTAGE OF AVERAGE: 1 OCTOBER -02 APRIL 2025

Most of the country has experienced normal seasonal rainfall, as shown by the green shaded area in Figure 3. However, there are parts of Mashonaland Central and Mashonaland West that have received below-average rainfall (yellow). In contrast, wetter conditions leading to above-average rainfall (blue shaded areas) have been observed across Matabeleland South, sections of Midlands and Masvingo. While improved rainfall distribution during January and most of February supported seasonal performance, March contributed significantly less rainfall, affecting the overall spatial and temporal distribution patterns. This late-season reduction has moderated some of the earlier gains in cumulative rainfall totals across affected regions.

## WEEKLY EVAPORATION 26 MARCH - 02 APRIL 2025

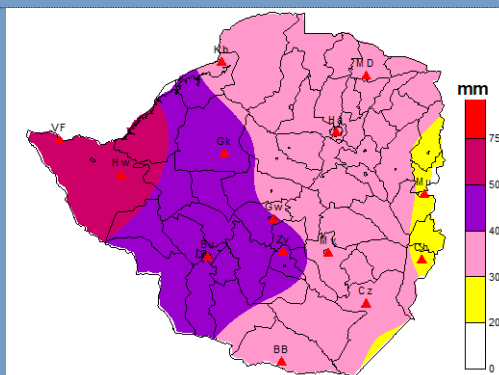


FIGURE 4: WEEKLY EVAPORATION: 19 -02 APRIL 2025

Few areas in Manicaland and Masvingo had evaporation amounts ranging between 20–30 mm as indicated by the yellow shading in Figure 4. The bulk of the country recorded evaporation above 30 mm, with the highest values observed in Matabeleland North Province, represented by deep purple in the figure 4.

Evaporative rates across the country continue to rise due to predominantly clear skies and hot conditions.

## WEATHER OUTLOOK FOR THE PERIOD: 02 - 09 APRIL 2025.

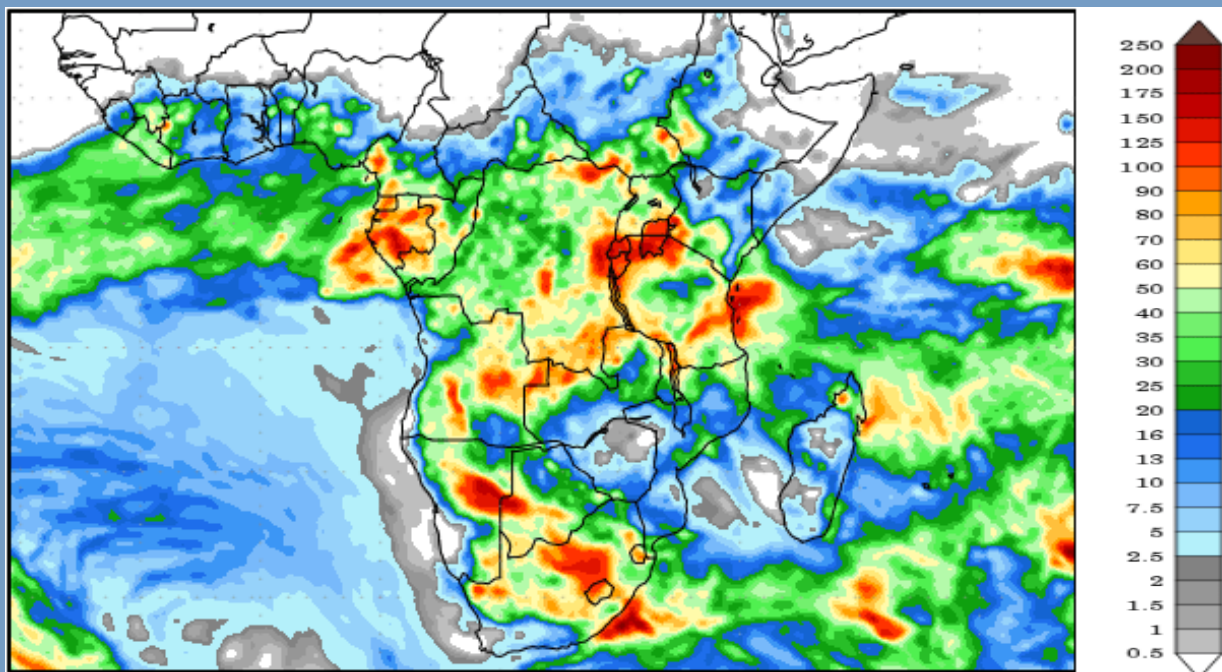


FIGURE 5: PRECIPITATION FORECAST: 02 - 09 APRIL 2025

Isolated thunderstorms are expected across all Matabeleland, Bulawayo, Midlands, Masvingo and Manicaland provinces. These areas are projected to receive weekly rainfall totals below 10 mm, as illustrated in Figure 5.

All Mashonaland Provinces and Harare Metropolitan, conditions will remain partly cloudy and hot, with a chance of isolated thunderstorms in localized areas.

*Note rainfall amounts are decreasing over the northern parts of the country and increasing over the southern*