

WEEKLY RAINFALL BULLETIN

RELEASED: 09 APRIL 2025

SEASON: 2024-2025

VALID: 09 APRIL TO 16 APRIL 2025

WEEKLY RAINFALL BULLETIN

BULLETIN N°23

Contents

Summary of the past week.....	2
Seasonal Accumulated Precipitation.....	2
Normal Precipitation Percentage.....	3
Evaporation.....	3
Weather Outlook for the Week Ending 16-04-2025.....	4

for more information and daily update follow us on:

X: <https://x.com/MSDZIM>

Facebook: <https://www.facebook.com/Meteorological-Services-Department-of-Zimbabwe-1466334176961651/>

Website: <https://www.weatherzw.org.zw>

SUMMARY OF PAST WEEK: 09 APRIL - 16 APRIL 2025

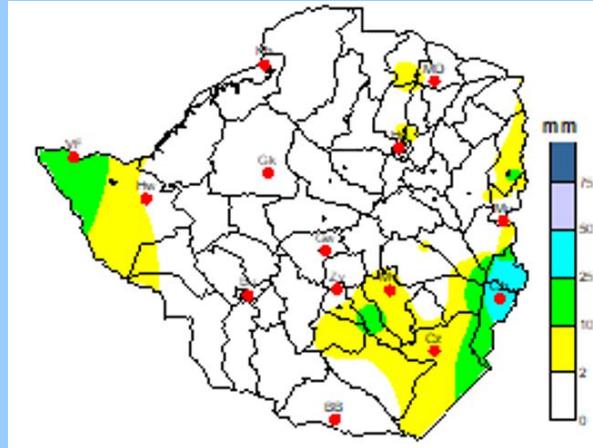


FIGURE 1: WEEKLY RAINFALL TOTALS: 09 -16 APRIL 2025

According to figure 1, the week under review was dry in many parts of the country except for areas in **Matabeleland North**, parts of **Masvingo** as well as **Manicaland Provinces**. The highest amounts recorded were in the range of 10mm to 25 mm.

SEASONAL ACCUMULATED RAINFALL: 1 OCTOBER 2024– 09 APRIL 2025

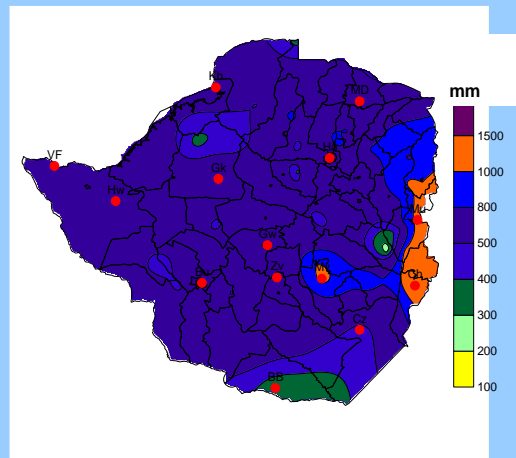


FIGURE 2: SEASONAL RAINFALL TOTALS: 1 OCTOBER -09 APRIL 2025

The bulky of the country have received above 500mm of rainfall as shown on figure 2 except for the extreme southern parts of the country (Beitbridge and Chiredzi districts) as of 01 October 2024 to date. Most parts of Manicaland province received above 1000 mm as shown by the orange color on the map above. Some areas in Masvingo and northern parts of Manicaland have received above 800 mm.

January and most of February contributed substantially to the seasonal accumulations due to the significant falls that were received, though March had a notable decrease in precipitation.

SEASONAL RAINFALL PERCENTAGE OF NORMAL: 1 OCTOBER 2024- 09 APRIL 2025

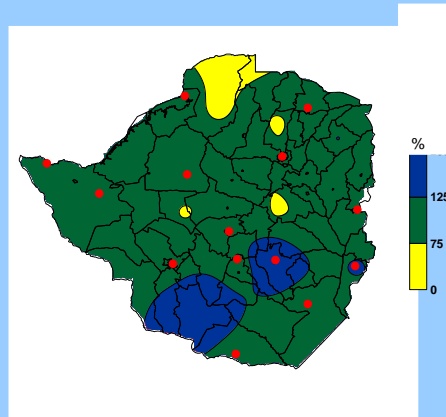


FIGURE 3: ACCUMULATION RAINFALL AS PERCENTAGE OF AVERAGE: 1 OCTOBER -02 APRIL 2025

As indicated by the green areas in Figure 3, much of the country has received normal to above normal seasonal rainfall. However, some regions in Mashonaland Central and Mashonaland West recorded below-normal precipitation (shown in yellow). On the other hand, Matabeleland South, parts of Midlands, and Masvingo experienced wetter-than-average conditions (highlighted in blue). Although rainfall distribution improved in January and much of February, March saw a notable decline in precipitation, altering the overall spatial and temporal patterns.

WEEKLY EVAPORATION 02 APRIL - 09 APRIL 2025

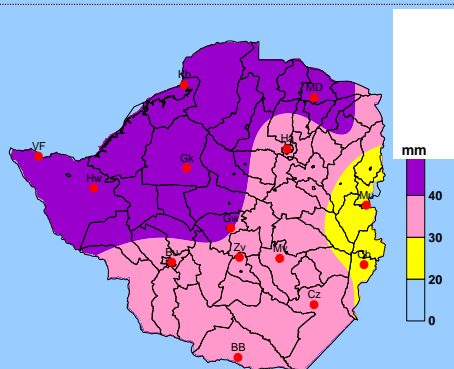


FIGURE 4: WEEKLY EVAPORATION: 19 -09 APRIL 2025

As shown in figure 4, higher evaporation rates were experienced in the northern parts of the country (above 40mm), as compared by the southern regions of the country, this is due to the south easterly airflow which was dominant in the southern parts that were bringing cool winds over these provinces. Evaporation over the country continues to rise due to predominantly clear skies and hot conditions.

WEATHER OUTLOOK FOR THE PERIOD: 09 - 15 APRIL 2025.

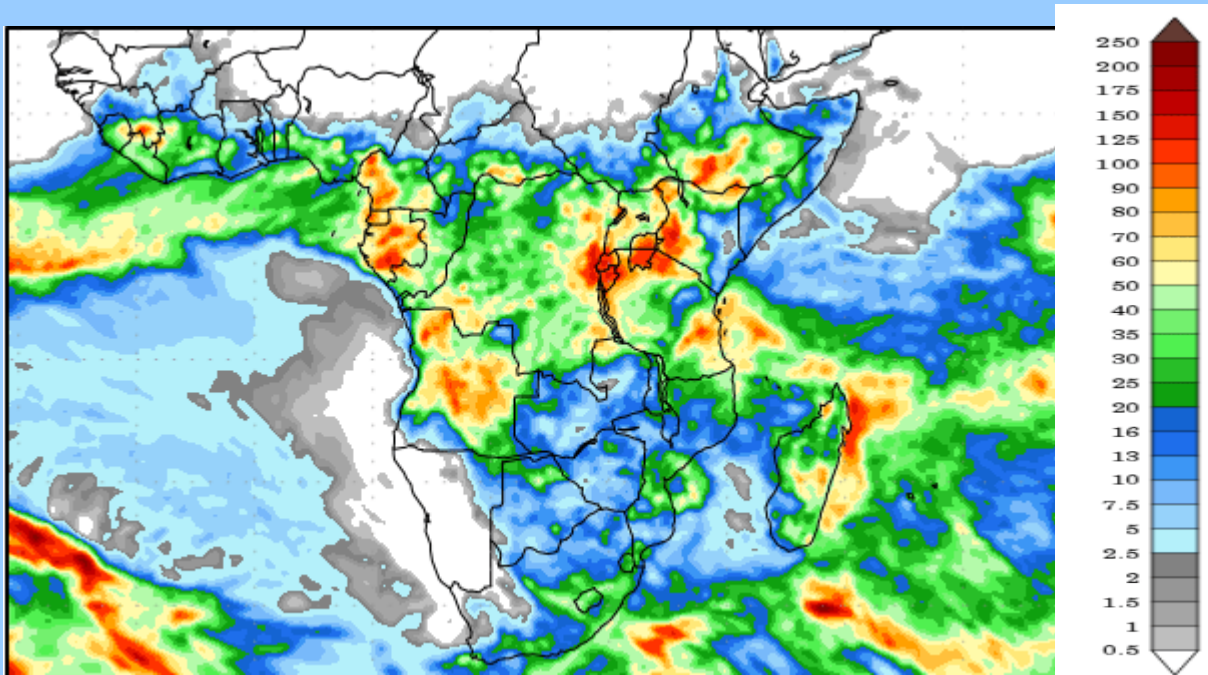


FIGURE 5: PRECIPITATION FORECAST: 09 - 15 APRIL 2025

As shown on figure 5 above, isolated thundershowers are anticipated across the country for the coming week, heavier falls are probable in places. A cloud band that is entering the country from the west is the one which will cause these isolated thundershowers.