



## WEEKLY RAINFALL BULLETIN

**RELEASED:** 19 MARCH 2025

**SEASON:** 2024-2025

**VALID:** 19 MARCH TO 26 MARCH 2025

### WEEKLY RAINFALL

### BULLETIN

BULLETIN N°20 of rainfall Season 2024/2025



### Contents

Summary of the past week...	2
Seasonal Accumulated Precipitation...	2
Normal Precipitation Percentage.....	3
Evaporation... ..	3
Weather Outlook for the Week Ending 26-03-2025.....	4

**for more information and weather updates follow us on:**

**X:** <https://x.com/MSDZIM>

Facebook: <https://www.facebook.com/Meteorological-Services-Department-of-Zimbabwe-1466334176961651/>

**Website:** <https://www.weatherzw.org.zw>



+263778125911

## SUMMARY OF PAST WEEK: 12 - 19 MARCH 2025

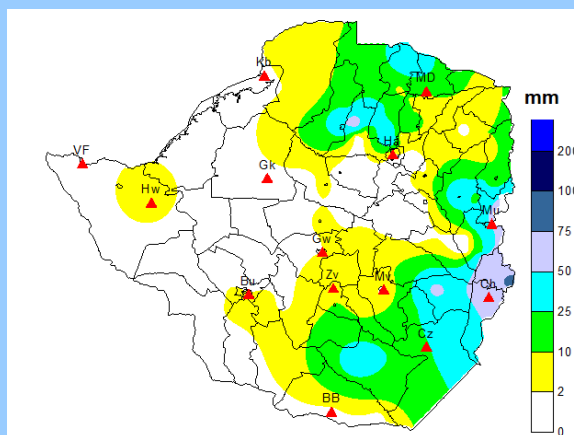


FIGURE 1: WEEKLY RAINFALL TOTALS: 12 -19 MARCH 2025

Manicaland, some parts of Masvingo and few areas in Mashonaland West received rainfall totals ranging between 25 – 60mm as shown in Figure 1. The eastern side of the country received rainfall totals from 2 mm and above, this was because of moisture from low pressure system in Mozambique. However, the western side of the country had no rainfall the whole week with few areas that received rainfall as shown by the yellow colour in Figure 1.

## SEASONAL ACCUMULATED RAINFALL: 1 OCTOBER 2024– 19 MARCH 2025

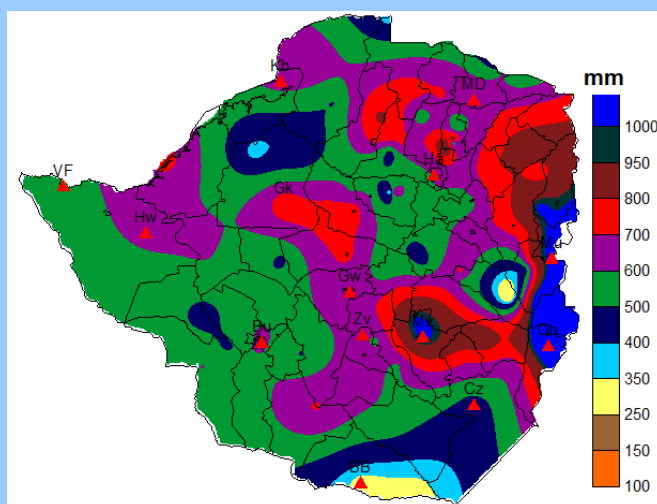


FIGURE 2: SEASONAL RAINFALL TOTALS: 1 OCTOBER -19 MARCH 2025

Much of the country has recorded cumulative rainfall in the range of 500mm and above since 1 October 2024. Parts of Masvingo, Manicaland and Mashonaland East Provinces have received cumulative rainfall of 800mm and above with areas in Manicaland having seasonal totals of 1000mm. However, few patches over Matabeleland South, Manicaland and Mashonaland Central have seasonal totals below 400mm as shown by the blue colours. The bulky parts of the country received rainfall accumulation between 500 and 600mm. The rainfall received in January and most of February has significantly contributed to the seasonal totals.

## SEASONAL RAINFALL PERCENTAGE OF NORMAL: 1 OCTOBER 2024- 19 MARCH 2025

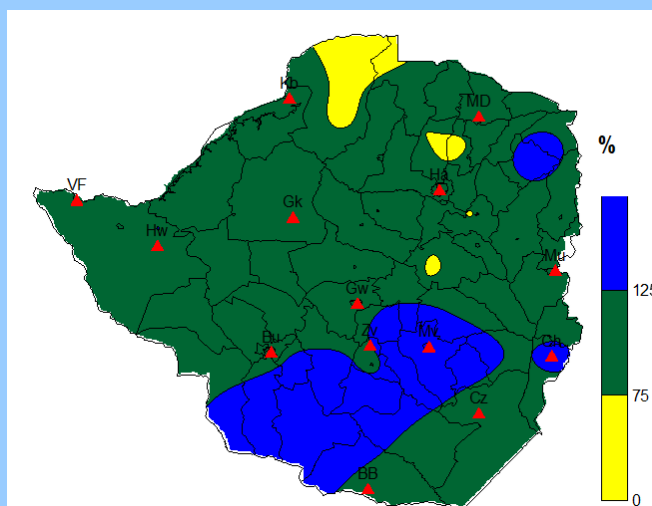


FIGURE 3: ACCUMULATION RAINFALL AS PERCENTAGE OF AVERAGE: 1 OCTOBER -19 MARCH 2025

Much of the country has received seasonal rainfall in the normal range, as indicated by the green areas, with few areas over Mashonaland Central, West receiving below-average rainfall, shown in yellow (Figure 3). Wetter conditions have been experienced in Matabeleland South, some areas of Midlands, Masvingo, Manicaland and Mashonaland East Provinces resulting in above-average rainfall received (blue coloured region). An improvement in the distribution of the rainfall in January and most of February has contributed to the seasonal performance so far.

## WEEKLY EVAPORATION 12 MARCH - 19 MARCH 2025

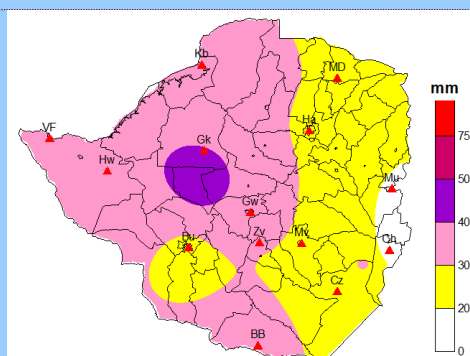


FIGURE 4: WEEKLY EVAPORATION: 12 -19 MARCH 2025

Weekly evaporation amounts below 30mm were recorded across the country as shown in Figure 4 with eastern parts of the country having evaporation amounts of 20mm. This is mainly attributed to the cloudiness that prevailed across the country which resulted in reduced daytime temperatures during the week under review. A purple color on the map (Figure 4) had high evaporation compared to other areas.

## WEATHER OUTLOOK FOR THE PERIOD: 19 MARCH- 26 MARCH 2025.

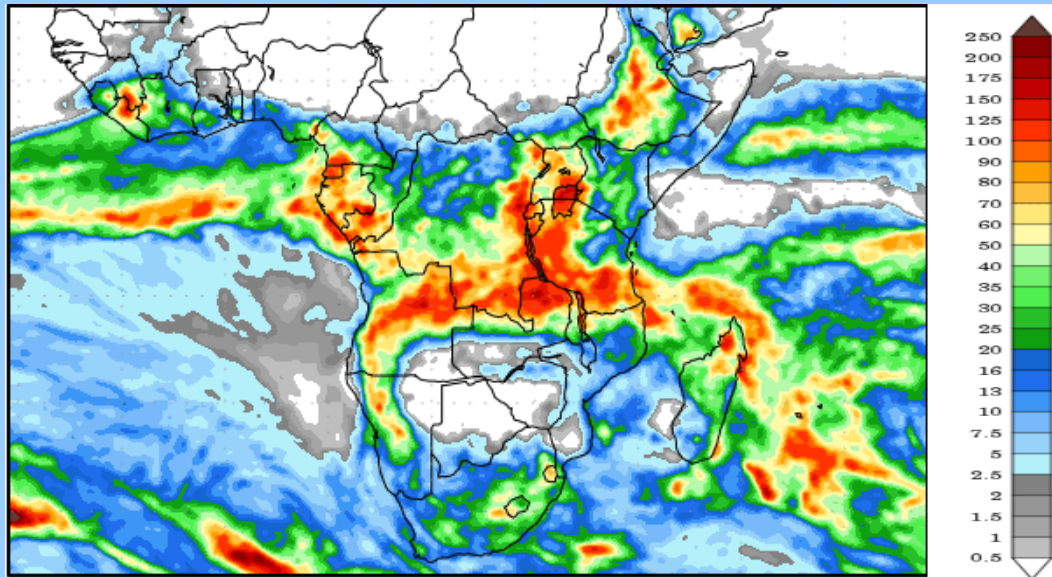


FIGURE 5: PRECIPITATION FORECAST: 19 MARCH- 26 MARCH 2025

The weather forecast indicates that isolated thunderstorms are expected in some parts of Mashonaland, Harare Metropolitan, and Manicaland Provinces during the forecast period. These areas are also expected to receive weekly rainfall below 10mm, as shown in Figure 7.

For the remaining provinces, partly cloudy and hot conditions are anticipated, though isolated thunderstorms may still occur in some areas.

*Note rainfall amounts are decreasing the whole country.*