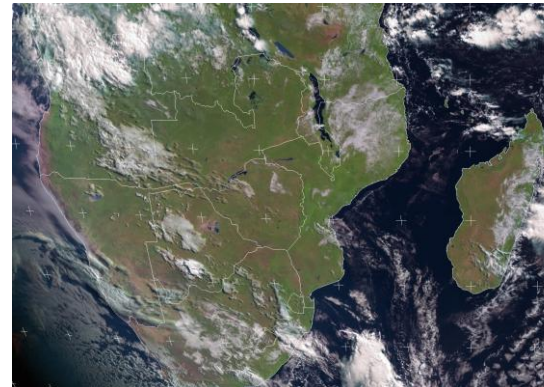




SATELLITE-BASED GLANCE INTO THIS MORNING, THURSDAY 01 MAY 2025



It started off mostly sunny and cool over much of the country. However, it became partly cloudy and warm across the region as the day progressed. These conditions developed due to a field of moisture gradually advancing into the country from western regions.

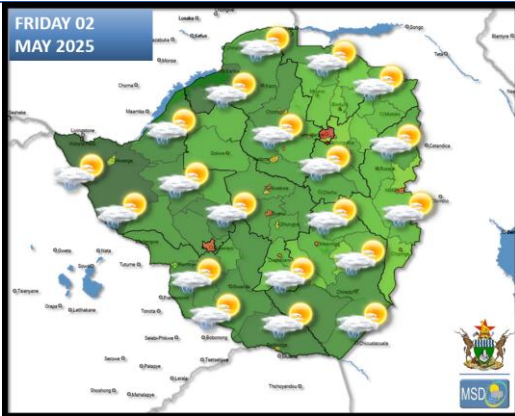


The Meteorological Services Department



wishes you a
*Happy International
Worker's Day - Week*

WEATHER FOR TOMORROW: FRIDAY 02 MAY 2025,



All Matabeleland, Masvingo, Manicaland, Midlands, Bulawayo Metropolitan, Harare Metropolitan and all Mashonaland

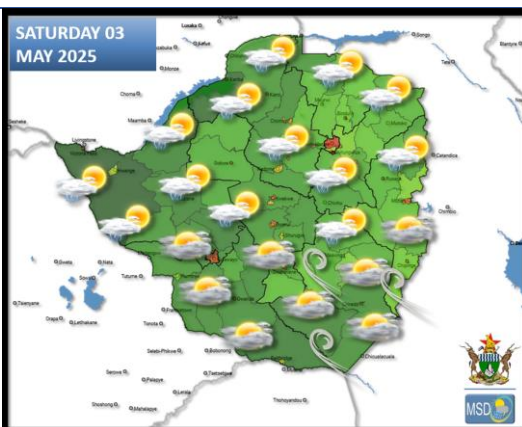
Partly cloudy and warm for much of the day with isolated thundershowers in places.

Actions to Take:

Seek shelter during thunder and lightning.

Plan outdoor activities with the weather in mind.

WEATHER OUTLOOK FOR: SATURDAY 03 MAY 2025



Harare Metropolitan, northern parts of Manicaland, Matabeleland North, northern parts of Midlands, and all Mashonaland Provinces.

Partly cloudy and mild in the morning becoming mostly cloudy and warm by the afternoon. Scattered thundershowers are probable.

Actions to Take:

Seek shelter during thunder and lightning. Plan outdoor activities with the weather in mind.

Matabeleland South, Bulawayo Metropolitan, southern parts of Midlands, southern parts of Manicaland and Masvingo Provinces.

Mostly cloudy, cool and windy with light rain and drizzle.

Actions to Take:

Ensure young children, the elderly and those of an ill disposition are kept warm, ESPECIALLY EARLY MORNING



MAJOR CITIES WEEK'S FORECAST: FRI 02 – TUE 06 MAY 2025

BULAWAYO					
FRI	SAT	SUN	MON	TUE	
27 15	26 13	26 14	27 15	28 14	
≥5mm	≥5mm	0.0mm	0.0mm	0.0mm	

CHINHOYI					
FRI	SAT	SUN	MON	TUE	
28 14	27 15	28 15	28 14	28 14	
≥5mm	≥5mm	0.0mm	0.0mm	0.0mm	

GWERU					
FRI	SAT	SUN	MON	TUE	
26 12	25 11	26 11	27 12	28 12	
≥5mm	≥5mm	0.0mm	0.0mm	0.0mm	

KADOMA					
FRI	SAT	SUN	MON	TUE	
29 14	28 13	29 14	30 15	30 15	
≥5mm	≥5mm	0.0mm	0.0mm	0.0mm	

LUPANE					
FRI	SAT	SUN	MON	TUE	
29 17	28 18	29 19	30 17	30 16	
≥5mm	≥5mm	0.0mm	0.0mm	0.0mm	

MASVINGO					
FRI	SAT	SUN	MON	TUE	
27 14	25 13	26 14	27 14	27 15	
≥5mm	≥5mm	0.0mm	0.0mm	0.0mm	

BINDURA					
FRI	SAT	SUN	MON	TUE	
27 14	26 13	27 14	28 15	27 15	
≥5mm	≥5mm	0.0mm	0.0mm	0.0mm	

GWANDA					
FRI	SAT	SUN	MON	TUE	
29 12	27 11	28 13	29 13	29 14	
≥5mm	≥5mm	0.0mm	0.0mm	0.0mm	

HARARE					
FRI	SAT	SUN	MON	TUE	
25 15	24 15	26 16	26 16	27 17	
≥5mm	≥5mm	0.0mm	0.0mm	0.0mm	

KWEKWE					
FRI	SAT	SUN	MON	TUE	
28 13	27 14	27 16	28 14	27 15	
≥5mm	≥5mm	0.0mm	0.0mm	0.0mm	

MARONDERA					
FRI	SAT	SUN	MON	TUE	
26 13	25 12	25 14	26 14	26 15	
≥5mm	≥5mm	0.0mm	0.0mm	0.0mm	

MUTARE					
FRI	SAT	SUN	MON	TUE	
24 11	25 12	26 13	26 14	25 14	
≥5mm	≥5mm	0.0mm	0.0mm	0.0mm	



Weather Report & Forecast

HOLIDAY RESORTS WEEK'S FORECAST: FRI 02 – TUE 06 MAY 2025

BINGA					
FRI	SAT	SUN	MON	TUE	
30	29	29	29	30	
17	16	15	16	18	
≥5mm	≥5mm	0.0mm	0.0mm	0.0mm	

CHINHOYI CAVES					
FRI	SAT	SUN	MON	TUE	
28	27	28	28	28	
14	15	15	14	14	
≥5mm	≥5mm	0.0mm	0.0mm	0.0mm	

CHIREZDI/GONAREZHOU NAT. PARK					
FRI	SAT	SUN	MON	TUE	
27	25	26	27	28	
14	13	15	14	14	
≥5mm	≥5mm	0.0mm	0.0mm	0.0mm	

HWANGE NATIONAL PARK					
FRI	SAT	SUN	MON	TUE	
29	27	27	28	29	
13	12	14	14	15	
≥5mm	≥5mm	0.0mm	0.0mm	0.0mm	

MATOPOS					
FRI	SAT	SUN	MON	TUE	
28	26	26	27	28	
15	14	13	13	14	
≥5mm	≥5mm	0.0mm	0.0mm	0.0mm	

VICTORIA FALLS					
FRI	SAT	SUN	MON	TUE	
31	29	29	28	27	
15	14	14	15	15	
≥5mm	≥5mm	0.0mm	0.0mm	0.0mm	

CHIMANIMANI					
FRI	SAT	SUN	MON	TUE	
24	25	26	26	25	
12	13	14	13	13	
≥5mm	≥5mm	0.0mm	0.0mm	0.0mm	

GREAT ZIMBABWE					
FRI	SAT	SUN	MON	TUE	
27	25	26	27	28	
14	13	15	14	14	
≥5mm	≥5mm	0.0mm	0.0mm	0.0mm	

HOT SPRINGS					
FRI	SAT	SUN	MON	TUE	
27	25	26	27	28	
14	14	15	14	14	
≥5mm	≥5mm	0.0mm	0.0mm	0.0mm	

KARIBA					
FRI	SAT	SUN	MON	TUE	
31	29	30	30	31	
18	16	17	17	17	
≥5mm	≥5mm	0.0mm	0.0mm	0.0mm	

NYANGA					
FRI	SAT	SUN	MON	TUE	
29	27	26	25	26	
11	10	12	13	14	
≥5mm	≥5mm	0.0mm	0.0mm	0.0mm	

VUMBA					
FRI	SAT	SUN	MON	TUE	
27	25	26	25	26	
16	15	15	14	14	
≥5mm	≥5mm	0.0mm	0.0mm	0.0mm	

