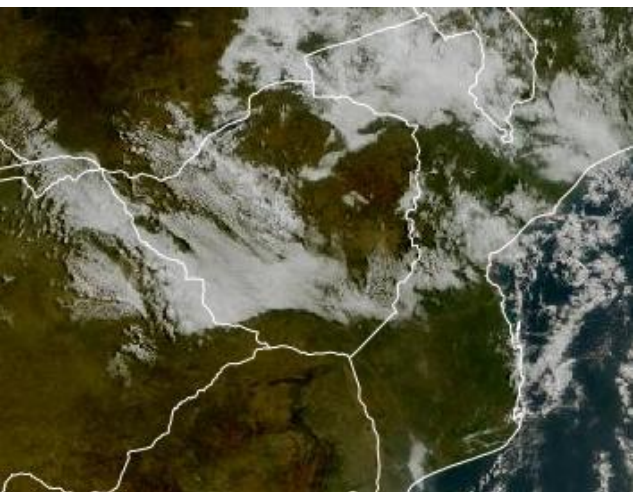


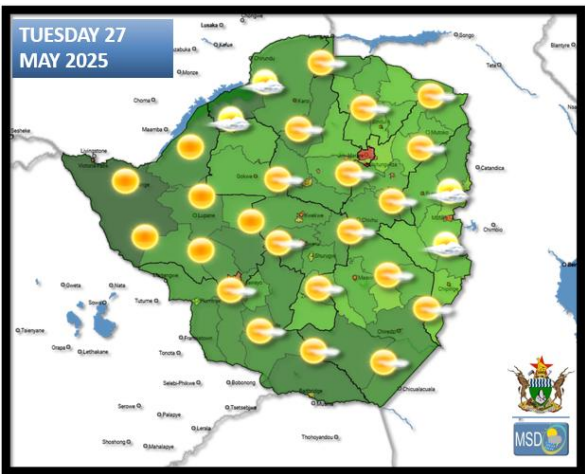
SATELLITE-BASED GLANCE INTO THIS MORNING, MONDAY 26 MAY 2025



This morning, cloudy and cold conditions prevailed over **Matabeleland North, Bulawayo Metropolitan Province, the Midlands, Masvingo** as well as some **parts of Matabeleland South provinces** due to presence of moisture in the atmosphere. The remainder of the country was under mostly clear skies and cold conditions. In the afternoon, the whole country became partly cloudy and mild, with cool conditions towards the evening and cold overnight.



WEATHER FOR TOMORROW: TUESDAY 27 MAY 2025



All Matabeleland, Mashonaland Central, Mashonaland East, Harare Metropolitan, Bulawayo Metropolitan, Masvingo and the southern parts of Manicaland provinces.

Clear skies and cold in the morning with a chance of slight ground frost in areas such as Matopos, West Nicholson, Masvingo, Gweru, and Chivhu. Mostly sunny and mild in the afternoon and cold overnight.

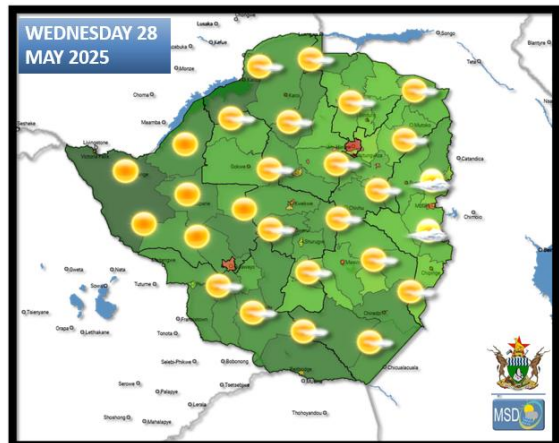
Mashonaland West and the northern parts of Manicaland provinces.

Partly cloudy and cold in the morning becoming warm in the afternoon with a chance of light showers.

Actions to Take:

- Ensure young children, the elderly and persons of an ill disposition are kept warm.
- If a brazier or fire is to be used indoors for warmth, ensure the room is well ventilated.

WEATHER OUTLOOK FOR: WEDNESDAY 28 MAY 2025



All Areas

Clear skies and cold conditions over much of the country. Slight ground frost is probable in all frost prone areas. Mostly sunny and warm in the afternoon becoming cool towards the evening. Cold overnight.

Actions to Take:

- Be warm early morning and late evening.
- Prepare frost mitigation measures.



Weather Report & Forecast

MAJOR CITIES FORECAST: TUE 27 – SAT 31 MAY 2025

BINDURA

MON	TUE	WED	THU	FRI
24°	25°	24°	25°	25°
9°	10°	12°	10°	9°
0.0	0.0	0.0	0.2	0.0
mm	mm	mm	mm	mm

BULAWAYO

MON	TUE	WED	THU	FRI
21°	21°	22°	22°	24°
9°	13°	12°	10°	10°
0.0	0.0	0.0	0.0	0.0
mm	mm	mm	mm	mm

CHINHOYI

MON	TUE	WED	THU	FRI
24°	25°	24°	26°	26°
9°	11°	12°	11°	10°
0.0	0.0	0.0	0.0	0.0
mm	mm	mm	mm	mm

GWANDA

MON	TUE	WED	THU	FRI
24°	25°	23°	24°	25°
11°	13°	11°	11°	12°
0.0	0.0	0.0	0.0	0.0
mm	mm	mm	mm	mm

GWERU

MON	TUE	WED	THU	FRI
23°	22°	21°	22°	23°
9°	13°	10°	9°	9°
0.0	0.0	0.0	0.0	0.0
mm	mm	mm	mm	mm

HARARE

MON	TUE	WED	THU	FRI
21°	22°	22°	23°	23°
10°	11°	13°	11°	11°
0.0	0.0	0.0	1.3	0.0
mm	mm	mm	mm	mm

KADOMA

MON	TUE	WED	THU	FRI
25°	25°	26°	26°	26°
12°	15°	14°	11°	11°
0.0	0.0	0.0	0.0	0.0
mm	mm	mm	mm	mm

KWEKWE

MON	TUE	WED	THU	FRI
25°	23°	25°	25°	26°
11°	11°	10°	9°	9°
0.0	0.0	0.0	0.0	0.0
mm	mm	mm	mm	mm

LUPANE

MON	TUE	WED	THU	FRI
27°	28°	27°	27°	28°
9°	15°	11°	10°	10°
0.0	0.0	0.0	0.0	0.0
mm	mm	mm	mm	mm

MARONDERA

MON	TUE	WED	THU	FRI
22°	21°	21°	22°	23°
8°	9°	9°	8°	7°
0.0	0.0	0.0	0.0	0.0
mm	mm	mm	mm	mm

MASVINGO

MON	TUE	WED	THU	FRI
24°	24°	23°	23°	25°
10°	12°	11°	11°	11°
0.0	0.0	0.0	0.0	0.0
mm	mm	mm	mm	mm

MUTARE

MON	TUE	WED	THU	FRI
22°	24°	21°	22°	23°
10°	11°	11°	11°	11°
0.0	0.0	0.1	0.2	0.0
mm	mm	mm	mm	mm



Weather Report & Forecast

HOLIDAY RESORTS FORECAST: TUE 27 – SAT 31 MAY 2025

BINGA

MON	TUE	WED	THU	FRI
25°	26°	26°	26°	25°
15°	16°	16°	18°	16°
0.0	0.0	0.0	0.0	0.0
mm	mm	mm	mm	mm

CHIMANIMANI

MON	TUE	WED	THU	FRI
21°	22°	19°	22°	23°
9°	10°	10°	9°	10°
0.2	0.2	0.6	0.3	0.0
mm	mm	mm	mm	mm

CHINHOYICAVES

MON	TUE	WED	THU	FRI
24°	25°	24°	26°	26°
10°	11°	12°	11°	11°
0.0	0.0	0.0	0.0	0.0
mm	mm	mm	mm	mm

HWANGENATPARK

MON	TUE	WED	THU	FRI
26°	27°	27°	26°	27°
10°	12°	12°	12°	10°
0.0	0.0	0.0	0.0	0.0
mm	mm	mm	mm	mm

KARIBA

MON	TUE	WED	THU	FRI
25°	28°	27°	26°	26°
14°	15°	16°	15°	16°
0.0	0.0	0.0	0.0	0.0
mm	mm	mm	mm	mm

MATOBO

MON	TUE	WED	THU	FRI
21°	21°	22°	22°	23°
9°	12°	11°	9°	10°
0.0	0.0	0.0	0.0	0.0
mm	mm	mm	mm	mm

GONAREZHOU

MON	TUE	WED	THU	FRI
28°	28°	26°	27°	29°
12°	14°	13°	14°	14°
0.0	0.0	0.0	0.0	0.0
mm	mm	mm	mm	mm

GREATZIMBABWE

MON	TUE	WED	THU	FRI
23°	24°	22°	23°	24°
11°	12°	11°	11°	12°
0.0	0.0	0.0	0.0	0.0
mm	mm	mm	mm	mm

HOTSPRINGS

MON	TUE	WED	THU	FRI
25°	26°	23°	25°	26°
12°	13°	12°	12°	12°
0.1	0.0	0.0	0.1	0.0
mm	mm	mm	mm	mm

NYANGA

MON	TUE	WED	THU	FRI
19°	18°	17°	18°	20°
6°	8°	8°	7°	7°
0.1	0.0	0.9	0.8	0.0
mm	mm	mm	mm	mm

VICFALLS

MON	TUE	WED	THU	FRI
25°	26°	27°	27°	27°
11°	12°	12°	12°	13°
0.0	0.0	0.0	0.0	0.0
mm	mm	mm	mm	mm

VUMBA

MON	TUE	WED	THU	FRI
22°	24°	21°	22°	23°
10°	11°	11°	11°	11°
0.0	0.0	0.1	0.2	0.0
mm	mm	mm	mm	mm