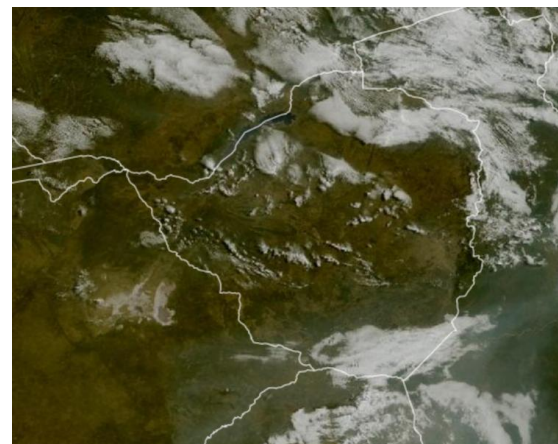




Weather Report & Forecast

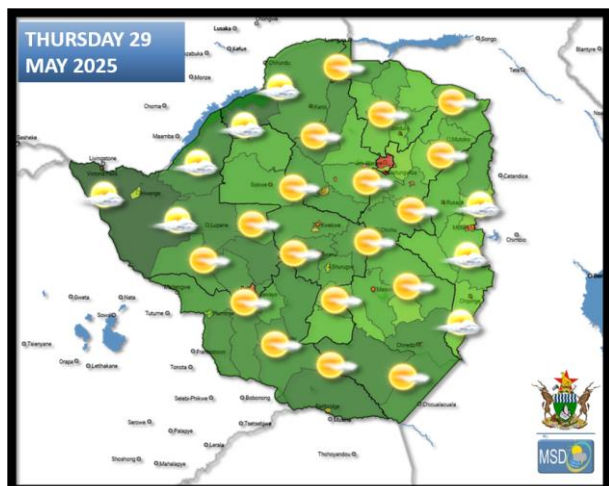
SATELLITE-BASED GLANCE INTO THIS MORNING, WEDNESDAY 28 MAY 2025



There were cloudy and cool conditions in the north-eastern and south-eastern parts of the country this morning. The former had swept in from west, while the latter was driven in by south-easterly winds last night. By mid-morning these winds were dying down and the clouds were scattering. This led to a mostly sunny and mild afternoon countrywide.



WEATHER FOR TOMORROW: THURSDAY 29 MAY 2025,



Matabeleland North, and Mashonaland West, as well as Manicaland Provinces

Cool in the morning with briefly cloudy periods. Partly cloudy and mild in the afternoon becoming cold towards evening.

Actions to Take:

- Ensure young children, the elderly and persons of an ill disposition are kept warm.
- If a brazier or fire is to be used indoors for warmth, ensure the room is well ventilated.

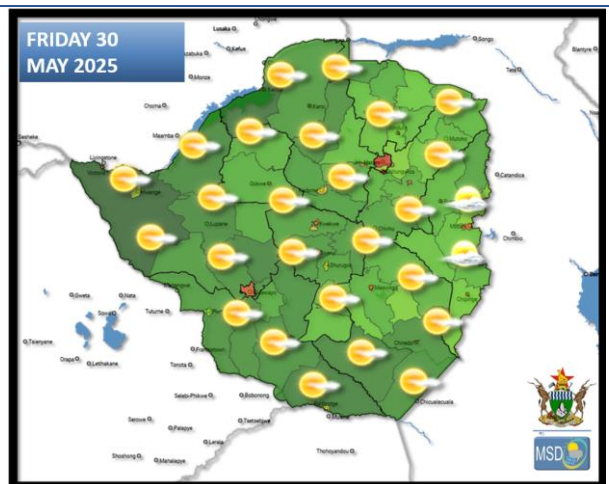
Mashonaland Central, Mashonaland East, Harare Metropolitan, Midlands, Masvingo, Matabeleland South and Bulawayo Metropolitan Provinces.

Mostly sunny and warm. Cold both morning and evening.

Actions to Take:

- Be warm early morning and late evening.

WEATHER OUTLOOK FOR: FRIDAY 30 MAY 2025



All Areas

Mostly clear skies and cold in the morning with a chance of slight ground frost in areas such as **Matopos, West Nicholson and Gweru**. Warm in the afternoon and cold overnight.

Actions to Take:

- Be warm early morning and late evening.
- Prepare frost mitigation measures.



Weather Report & Forecast

MAJOR CITIES FORECAST: THU 29 – SAT 31 MAY 2025

BINDURA

THU	FRI	SAT
25°	25°	26°
10°	9°	10°
0.0	0.0	0.0
mm	mm	mm

BULAWAYO

THU	FRI	SAT
22°	24°	24°
10°	10°	11°
0.0	0.0	0.0
mm	mm	mm

CHINHOYI

THU	FRI	SAT
26°	26°	27°
11°	10°	10°
0.0	0.0	0.0
mm	mm	mm

GWANDA

THU	FRI	SAT
24°	26°	25°
11°	11°	13°
0.0	0.0	0.0
mm	mm	mm

GWERU

THU	FRI	SAT
22°	23°	23°
9°	9°	10°
0.0	0.0	0.0
mm	mm	mm

HARARE

THU	FRI	SAT
23°	24°	25°
11°	11°	11°
0.1	0.0	0.0
mm	mm	mm

KADOMA

THU	FRI	SAT
25°	26°	27°
10°	10°	11°
0.0	0.0	0.0
mm	mm	mm

KWEKWE

THU	FRI	SAT
25°	26°	27°
9°	9°	10°
0.0	0.0	0.0
mm	mm	mm

LUPANE

THU	FRI	SAT
27°	27°	28°
10°	9°	10°
0.0	0.0	0.0
mm	mm	mm

MARONDERA

THU	FRI	SAT
21°	22°	22°
8°	8°	9°
0.0	0.0	0.0
mm	mm	mm

MASVINGO

THU	FRI	SAT
23°	24°	23°
10°	10°	12°
0.0	0.0	0.0
mm	mm	mm

MUTARE

THU	FRI	SAT
21°	24°	22°
10°	10°	11°
0.4	0.0	0.0
mm	mm	mm



Weather Report & Forecast

HOLIDAY RESORTS FORECAST: THU 29 – SAT 31 MAY 2025

BINGA

THU	FRI	SAT
27°	26°	25°
19°	16°	16°
0.0	0.0	0.0
mm	mm	mm

CHIMANIMANI

THU	FRI	SAT
22°	23°	22°
8°	10°	10°
1.1	0.0	0.0
mm	mm	mm

CHINHOYI CAVES

THU	FRI	SAT
25°	26°	27°
11°	10°	11°
0.0	0.0	0.0
mm	mm	mm

GONAREZHOU

THU	FRI	SAT
27°	30°	27°
13°	14°	14°
0.0	0.0	0.0
mm	mm	mm

GREAT ZIMBABWE

THU	FRI	SAT
23°	24°	23°
11°	11°	12°
0.0	0.0	0.0
mm	mm	mm

HOTSPRINGS

THU	FRI	SAT
25°	26°	27°
12°	12°	13°
0.2	0.0	0.0
mm	mm	mm

HWANGE NAT PARK

THU	FRI	SAT
26°	27°	28°
12°	10°	11°
0.0	0.0	0.0
mm	mm	mm

KARIBA

THU	FRI	SAT
27°	26°	27°
16°	15°	15°
0.0	0.0	0.0
mm	mm	mm

MATOPOS

THU	FRI	SAT
22°	23°	23°
9°	10°	11°
0.0	0.0	0.0
mm	mm	mm

NYANGA

THU	FRI	SAT
18°	21°	19°
7°	8°	9°
0.5	0.0	0.0
mm	mm	mm

VICTORIA FALLS

THU	FRI	SAT
27°	27°	28°
12°	12°	13°
0.0	0.0	0.0
mm	mm	mm

VUMBA

THU	FRI	SAT
21°	24°	22°
10°	10°	11°
0.4	0.0	0.0
mm	mm	mm