



WEEKLY RAINFALL BULLETIN

RELEASED: 20 NOVEMBER 2025

SEASON: 2025-2026

VALID: 21 NOVEMBER TO 26 NOVEMBER 2025

WEEKLY RAINFALL

BULLETIN

BULLETIN N°04 of rainfall Season 2025/2026



Contents

Summary of the past week...	2
Seasonal Accumulated Precipitation...	2
Normal Precipitation Percentage.....	3
Evaporation... ..	3
Weather Outlook for the Week Ending 26-11-2025.....	4

for more information and weather updates follow us on:

X: <https://x.com/MSDZIM>

Facebook: <https://www.facebook.com/Meteorological-Services-Department-of-Zimbabwe-1466334176961651/>

Website: <https://www.weatherzw.org.zw>



+263778125911

SUMMARY OF PAST WEEK: 12 NOVEMBER – 18 NOVEMBER 2025

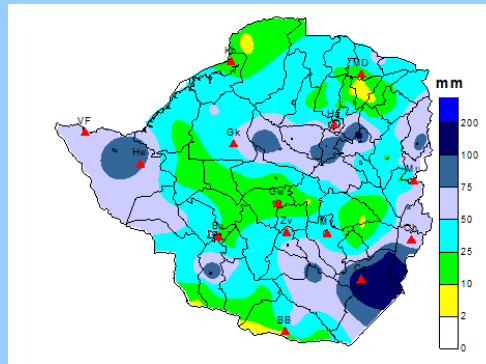


FIGURE 1: WEEKLY RAINFALL TOTALS: 12 -18 NOVEMBER 2025

During the week under review, wet conditions prevailed across much of the country, with the greater part receiving 10 mm of rain or more (Fig 1). Only a few isolated regions recorded lower totals (yellow-coloured regions). Highest cumulative rainfall for the week was recorded in parts of Matabeleland North, Masvingo, Midlands, Manicaland and Mashonaland West. The highest 24-hour rainfall amounts were recorded in Buffalo Range (112 mm), Kezi (106 mm), Chisumbanje (87 mm), and Mberengwa (75 mm). The increased rainfall was caused by two systems a cloud band and a high-pressure system which resulted in higher weekly accumulations.

SEASONAL ACCUMULATED RAINFALL: 01 OCTOBER 2025– 18 NOVEMBER 2025

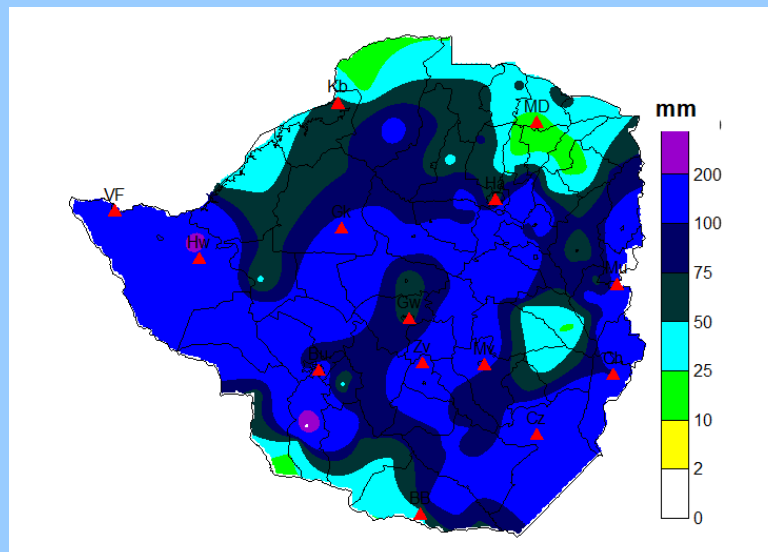


FIGURE 2: SEASONAL RAINFALL TOTALS: 01 OCTOBER -18 NOVEMBER 2025

Most of the country has received seasonal totals above 25 mm of rain, with only a few exceptions as shown in Figure 2. The wetter conditions that have dominated the country during the past two weeks have contributed to these seasonal totals. The month of October did not have much rainfall except in parts of Matabeleland North, Matabeleland South, Masvingo and southern areas of Manicaland.

SEASONAL RAINFALL PERCENTAGE OF NORMAL: 1 OCTOBER 2025- 18 NOVEMBER 2025

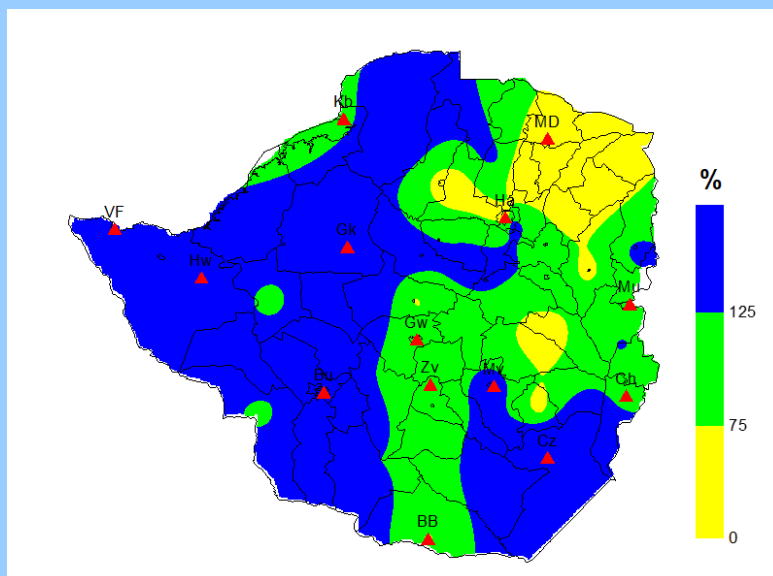


FIGURE 3: CUMULATIVE RAINFALL AS PERCENTAGE OF AVERAGE: 1 OCTOBER -18 NOVEMBER 2025

Drier conditions mostly in Mashonaland East and Mashonaland Central (yellow shading) have resulted in below-normal seasonal rainfall to date (Figure 3). In contrast, above-normal precipitation has been recorded in the western part of the country (most of Matabeleland South and Matabeleland North, Mashonaland West and northern Midlands) as well as southern Manicaland and Masvingo (blue). These areas have experienced wetter conditions than is expected for the period (1 October to 18 November). Areas shaded green received seasonal rainfall comparable to the long-term average (normal).

WEEKLY EVAPORATION 12 NOVEMBER - 19 NOVEMBER 2025

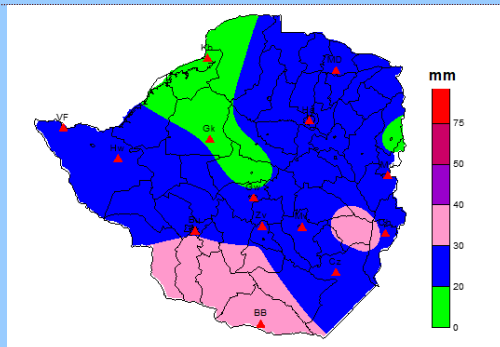


FIGURE 4: WEEKLY EVAPORATION: 12 -19 NOVEMBER 2025

Figure 4 shows that most of the country recorded evaporation rates below 20 mm. In contrast, the southern provinces of Matabeleland South and Masvingo experienced higher rates, reaching 30 mm. This decrease in evaporation across the country is attributed to mostly cloudy skies and warm conditions.

WEATHER OUTLOOK FOR THE PERIOD: 21 NOVEMBER - 26 NOVEMBER 2025.

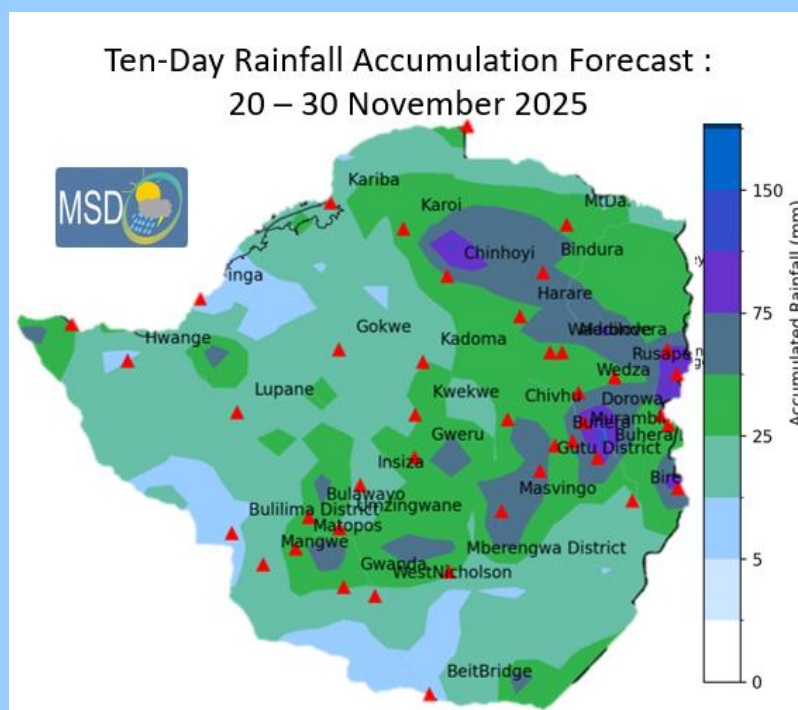


FIGURE 5: PRECIPITATION FORECAST: 21 NOVEMBER – 26 NOVEMBER 2025

Isolated thunderstorms are still expected during the coming week. Rainfall amounts are expected to range between 25 mm to 75 mm mostly in the central and eastern part of the country (Ffigure 5).