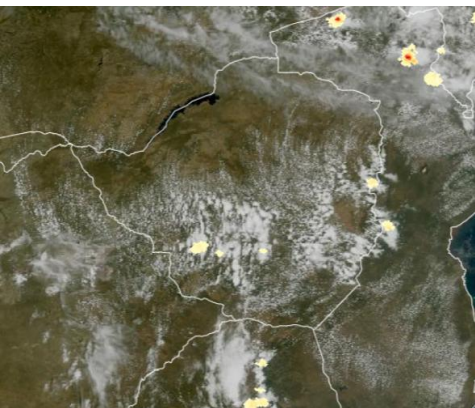




# Weather Report & Forecast

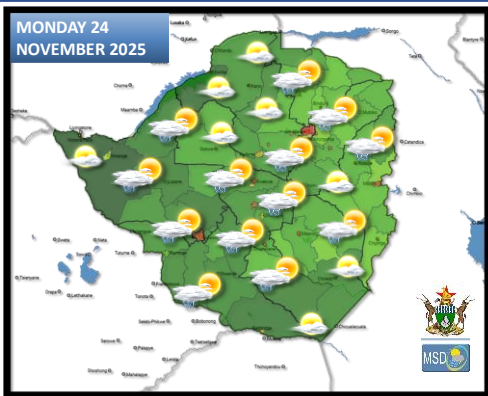
## SATELLITE-BASED GLANCE INTO TODAY, SUNDAY 23 NOVEMBER 2025.



Yesterday, isolated light showers were recorded in the southeastern regions of the country. Today began with clear skies and mild conditions across most of the country. As the day progressed, many areas experienced partly cloudy and warm conditions, with isolated afternoon thundershowers in **Matabeleland South, Bulawayo metropolitan, Midlands and Manicaland provinces**. In contrast, the northern regions remained predominantly sunny and hot. Meanwhile, a ridge of high pressure along the southeast coast will bring cool and moist south-easterlies into the southeastern areas, thereby enhancing thunderstorm activity over Zimbabwe.



## FORECAST FOR TOMORROW: MONDAY 24 NOVEMBER 2025



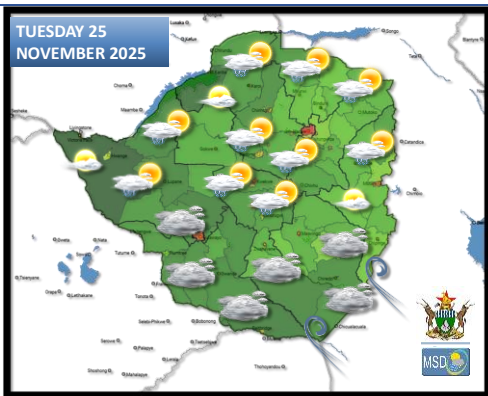
**Manicaland, Masvingo, Bulawayo Metropolitan and South of Midlands and All Matabeleland provinces** Partly cloudy and mild in the morning becoming mostly cloudy and hot with scattered thunderstorms.

**Harare Metropolitan, North of Midlands, and all Mashonaland Provinces:** Partly cloudy and warm at first becoming partly cloudy with isolated thundershowers.

**Actions to Take:**

- Rain can make sidewalks and roads slippery. Walk and drive carefully to avoid slipping.
- When thunder roars, even if distant, seek shelter and stay inside for at least 30 minutes after the last sound of thunder.

## WEATHER OUTLOOK FOR: TUESDAY 25 NOVEMBER 2025



**Masvingo, South of Manicaland, Matabeleland South, Bulawayo Metropolitan provinces.** Mostly cloudy, windy and mild in the morning, with patchy drizzle and rain, becoming warm in the afternoon with isolated showers.

**Harare Metropolitan, Midlands, Matabeleland North, north of Manicaland, and all Mashonaland Provinces** Partly cloudy and mild in the morning becoming cloudy and hot in the afternoon with scattered thunderstorms.

**Actions to Take:**

- Rain can make sidewalks and roads slippery. Walk carefully to avoid slipping.
- When thunder roars, even if distant, seek shelter and stay inside for at least 30 minutes after the last sound of thunder.





## MAJOR CITIES FORECAST: MON 24 – FRI 28 NOVEMBER 2025

### BINDURA

MON	TUE	WED	THU	FRI
33°	32°	28°	31°	34°
19°	19°	19°	19°	20°
0.0	1.4	2.1	9.2	0.4
mm	mm	mm	mm	mm

### BULAWAYO

MON	TUE	WED	THU	FRI
32°	31°	26°	26°	28°
19°	17°	16°	18°	18°
0.1	2.8	33.1	4.9	1.2
mm	mm	mm	mm	mm

### CHINHOYI

MON	TUE	WED	THU	FRI
32°	31°	30°	32°	34°
19°	18°	18°	19°	19°
0.0	4.3	0.4	5.8	1.9
mm	mm	mm	mm	mm

### GWANDA

MON	TUE	WED	THU	FRI
37°	24°	33°	29°	32°
22°	18°	19°	22°	19°
0.0	4.1	7.4	2.6	0.1
mm	mm	mm	mm	mm

### GWERU

MON	TUE	WED	THU	FRI
31°	32°	22°	29°	29°
18°	15°	16°	17°	17°
0.1	3.1	24.2	11.2	2.9
mm	mm	mm	mm	mm

### HARARE

MON	TUE	WED	THU	FRI
30°	28°	25°	28°	29°
18°	18°	17°	18°	19°
0.0	0.1	2.9	13.9	3.1
mm	mm	mm	mm	mm

### KADOMA

MON	TUE	WED	THU	FRI
34°	33°	27°	31°	33°
19°	18°	17°	17°	18°
0.0	3.4	4.9	15.3	3.7
mm	mm	mm	mm	mm

### KWEKWE

MON	TUE	WED	THU	FRI
34°	32°	23°	31°	31°
19°	17°	17°	17°	18°
0.1	1.2	10.7	16.2	1.9
mm	mm	mm	mm	mm

### LUPANE

MON	TUE	WED	THU	FRI
36°	35°	28°	31°	32°
21°	19°	18°	20°	20°
0.0	2.2	10.5	3.4	1.3
mm	mm	mm	mm	mm

### MARONDERA

MON	TUE	WED	THU	FRI
28°	26°	24°	26°	28°
16°	16°	15°	16°	17°
0.0	1.7	18.4	16.1	1.6
mm	mm	mm	mm	mm

### MASVINGO

MON	TUE	WED	THU	FRI
35°	29°	28°	30°	30°
21°	18°	18°	18°	20°
1.3	3.8	20.1	5.1	0.2
mm	mm	mm	mm	mm

### MUTARE

MON	TUE	WED	THU	FRI
30°	27°	25°	29°	28°
16°	18°	17°	17°	17°
1.1	0.8	14.2	21.5	19.4
mm	mm	mm	mm	mm





## HOLIDAY RESORTS FORECAST: MON 24 – FRI 28 NOVEMBER 2025

### BINGA

MON	TUE	WED	THU	FRI
35°	32°	30°	31°	33°
24°	25°	22°	22°	24°
0.0 mm	0.1 mm	1.6 mm	15.2 mm	4.2 mm

### GONAREZHOU

MON	TUE	WED	THU	FRI
37°	28°	29°	37°	29°
21°	20°	20°	21°	21°
0.0 mm	7.2 mm	3.1 mm	0.9 mm	0.0 mm

### CHIMANIMANI

MON	TUE	WED	THU	FRI
28°	25°	25°	26°	26°
16°	16°	16°	16°	16°
1.6 mm	4.8 mm	13.3 mm	51.2 mm	9.7 mm

### GREATZIMBABWE

MON	TUE	WED	THU	FRI
35°	24°	28°	31°	29°
20°	18°	18°	18°	20°
0.5 mm	3.2 mm	15.3 mm	5.8 mm	0.7 mm

### CHINHOYICAVES

MON	TUE	WED	THU	FRI
32°	31°	29°	32°	34°
19°	18°	18°	19°	20°
0.0 mm	2.1 mm	0.2 mm	4.6 mm	1.4 mm

### HOTSPRINGS

MON	TUE	WED	THU	FRI
34°	32°	30°	32°	33°
20°	19°	18°	19°	19°
0.0 mm	0.1 mm	17.7 mm	40.8 mm	4.2 mm

### HWANGENATPARK

MON	TUE	WED	THU	FRI
35°	34°	27°	27°	31°
21°	20°	18°	19°	19°
0.0 mm	1.1 mm	10.4 mm	2.6 mm	2.3 mm

### NYANGA

MON	TUE	WED	THU	FRI
25°	22°	21°	25°	24°
14°	13°	14°	14°	16°
2.4 mm	10.5 mm	11.6 mm	13.5 mm	5.6 mm

### KARIBA

MON	TUE	WED	THU	FRI
37°	34°	32°	33°	36°
24°	23°	23°	24°	25°
0.0 mm	0.2 mm	0.6 mm	3.0 mm	0.1 mm

### VICFALLS

MON	TUE	WED	THU	FRI
37°	35°	25°	23°	31°
23°	20°	18°	18°	20°
0.0 mm	0.7 mm	12.5 mm	40.8 mm	8.4 mm

### MATOBO

MON	TUE	WED	THU	FRI
33°	30°	28°	24°	29°
19°	16°	17°	19°	18°
0.0 mm	4.5 mm	29.8 mm	1.7 mm	0.5 mm

### VUMBA

MON	TUE	WED	THU	FRI
30°	27°	25°	29°	28°
16°	18°	17°	17°	17°
1.1 mm	0.8 mm	14.2 mm	21.5 mm	19.4 mm





GOVERNMENT OF ZIMBABWE  
MINISTRY OF ENVIRONMENT, CLIMATE AND WILDLIFE



METEOROLOGICAL SERVICES DEPARTMENT  
P.O. BOX 819 BELVEDERE, HARARE, ZIMBABWE  
PHONE: +263 242 778 141 - 263 778 125 931  
All correspondence should be addressed to the Director



# Weather Report & Forecast



METEOROLOGICAL SERVICES DEPARTMENT  
ISSUED IN CONJUNCTION WITH  
DEPARTMENT OF CIVIL PROTECTION &  
ZIMBABWE NATIONAL WATER AUTHORITY

