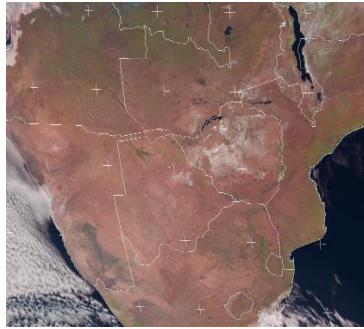




# WEATHER REPORT & FORECAST

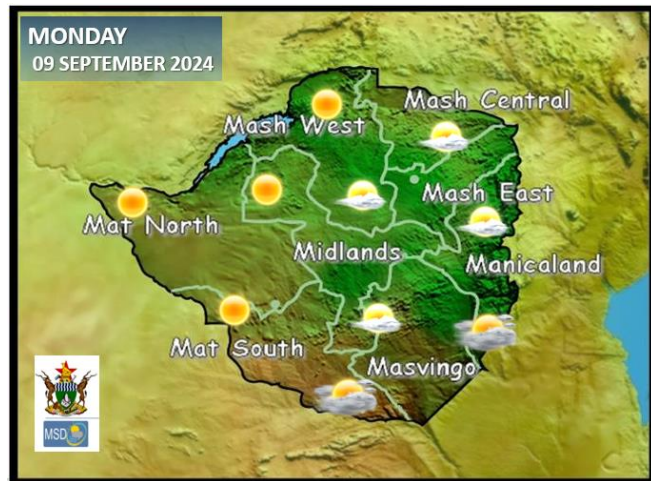


Mostly clear skies and cold conditions prevailed across much of the country in the morning. Later on, during the day, cloud developments were observed and it became partly cloudy in **Mashonaland Provinces and Harare Metropolitan, Matabeleland North, Midlands and northern parts of Manicaland Provinces.**



**FIRE SEASON ALERT:**  
DO NOT START ANY OUTDOOR FIRES

## WEATHER FOR TOMORROW: MONDAY 09 SEPTEMBER 2024



**Morning:** It should be cold under clear skies across the country.

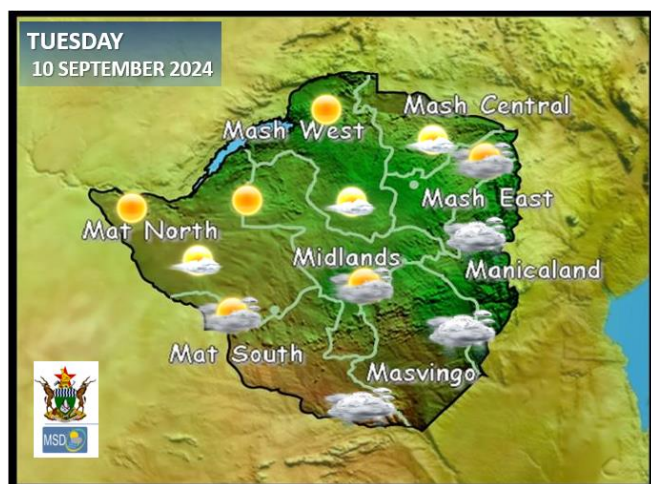
**Afternoon:** Mostly sunny and with a cool south-easterly airflow in the southern districts such as **Mwenezi and Chiredzi** should be felt towards the evening.

**OVERNIGHT:** It should become windy, and mostly cloudy with cool conditions over **Mashonaland East, Manicaland, Masvingo, southern parts of Midlands, Matabeleland South and Bulawayo Metropolitan Provinces.**

### IMPACTS & ACTIONS TO TAKE

- Perfect time for outdoor activities.
- Temperature fluctuations may affect the elders and children. Ensure that they keep warm.

## WEATHER OUTLOOK FOR: TUESDAY 10 SEPTEMBER 2024



Anticipate cloudy and windy conditions in **Mashonaland East, Manicaland, Masvingo, southern parts of Midlands, Matabeleland South and Bulawayo Metropolitan Provinces** in the morning. Drizzle and light rain are highly probable in some places. Sunbreaks are expected as the day progresses, though temperatures should be in the mild category.

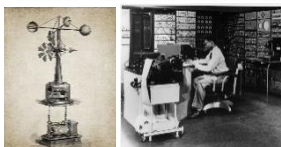
**The rest of the country** should be mostly sunny and cold at first becoming warm by the afternoon.

### IMPACTS & ACTIONS TO TAKE

- Windy conditions increase the risk of runaway veld fires.
- Do not start any outdoor fires, and do not leave any fire unattended.



CELEBRATING 100 YEARS SINCE  
THE 1<sup>ST</sup> WEATHER FORECAST  
1924 - 2024





## 5-DAY FORECAST FOR MAJOR CITIES:

MONDAY 09 – FRIDAY 13 SEPTEMBER 2024

### BULAWAYO

MON	TUE	WED	THU	FRI
30 14	26 16	28 13	29 13	31 14
0.0mm	0.0mm	0.0mm	0.0mm	0.0mm

### CHINHOYI

MON	TUE	WED	THU	FRI
30 14	31 15	29 13	30 12	31 14
0.0mm	0.0mm	0.0mm	0.0mm	0.0mm

### GWERU

MON	TUE	WED	THU	FRI
29 11	27 12	28 13	30 11	31 10
0.0mm	0.0mm	0.0mm	0.0mm	0.0mm

### KADOMA

MON	TUE	WED	THU	FRI
29 14	28 15	29 12	30 11	29 12
0.0mm	0.0mm	0.0mm	0.0mm	0.0mm

### LUPANE

MON	TUE	WED	THU	FRI
34 10	32 11	32 09	33 08	34 10
0.0mm	0.0mm	0.0mm	0.0mm	0.0mm

### MASVINGO

MON	TUE	WED	THU	FRI
29 12	26 12	27 12	30 11	31 12
0.0mm	0.0mm	0.0mm	0.0mm	0.0mm

### BINDURA

MON	TUE	WED	THU	FRI
29 13	29 11	29 11	30 10	31 12
0.0mm	0.0mm	0.0mm	0.0mm	0.0mm

### GWANDA

MON	TUE	WED	THU	FRI
30 10	30 12	31 12	32 09	32 10
0.0mm	0.0mm	0.0mm	0.0mm	0.0mm

### HARARE

MON	TUE	WED	THU	FRI
27 14	26 15	27 13	28 12	28 13
0.0mm	0.0mm	0.0mm	0.0mm	0.0mm

### KWEKWE

MON	TUE	WED	THU	FRI
32 11	30 12	31 10	31 10	32 12
0.0mm	0.0mm	0.0mm	0.0mm	0.0mm

### MARONDERA

MON	TUE	WED	THU	FRI
27 10	26 11	27 11	27 10	28 10
0.0mm	0.0mm	0.0mm	0.0mm	0.0mm

### MUTARE

MON	TUE	WED	THU	FRI
28 13	27 14	28 13	29 12	30 13
0.0mm	0.0mm	0.0mm	0.0mm	0.0mm

# 5-DAY FORECAST FOR HOLIDAY RESORTS:

MONDAY 09 – FRIDAY 13 SEPTEMBER 2024



VICTORIA FALLS  
ZIMBABWE

## BINGA

MON	TUE	WED	THU	FRI
33 20	34 21	32 19	33 18	34 20
0.0mm	0.0mm	0.0mm	0.0mm	0.0mm

## CHINHOYI CAVES

MON	TUE	WED	THU	FRI
30 14	31 15	29 13	30 12	31 14
0.0mm	0.0mm	0.0mm	0.0mm	0.0mm

## CHIREZI/GONAREZHOU NAT. PARK

MON	TUE	WED	THU	FRI
34 14	28 14	29 12	31 13	32 14
0.0mm	0.02mm	0.0mm	0.0mm	0.0mm

## HWANGE NATIONAL PARK

MON	TUE	WED	THU	FRI
30 11	31 12	29 10	30 11	31 12
0.0mm	0.0mm	0.0mm	0.0mm	0.0mm

## MATOPOS

MON	TUE	WED	THU	FRI
32 15	28 15	29 14	31 15	32 16
0.0mm	0.0mm	0.0mm	0.0mm	0.0mm

## VICTORIA FALLS

MON	TUE	WED	THU	FRI
32 11	32 12	30 10	31 09	32 12
0.0mm	0.0mm	0.0mm	0.0mm	0.0mm

## CHIMANIMANI

MON	TUE	WED	THU	FRI
28 12	24 11	25 11	26 12	27 12
0.0mm	0.0mm	0.1mm	0.0mm	0.0mm

## GREAT ZIMBABWE

MON	TUE	WED	THU	FRI
32 12	27 13	28 12	30 11	31 12
0.0mm	0.0mm	0.0mm	0.0mm	0.0mm

## HOT SPRINGS

MON	TUE	WED	THU	FRI
33 15	28 16	29 14	31 13	32 15
0.0mm	0.0mm	0.0mm	0.0mm	0.0mm

## KARIBA

MON	TUE	WED	THU	FRI
35 16	36 17	32 16	33 15	34 17
0.0mm	0.0mm	0.0mm	0.0mm	0.0mm

## NYANGA

MON	TUE	WED	THU	FRI
23 08	20 09	21 05	23 08	24 10
0.0mm	0.0mm	0.0mm	0.0mm	0.0mm

## VUMBA

MON	TUE	WED	THU	FRI
25 09	23 10	24 09	26 08	26 11
0.0mm	0.0mm	0.0mm	0.0mm	0.0mm