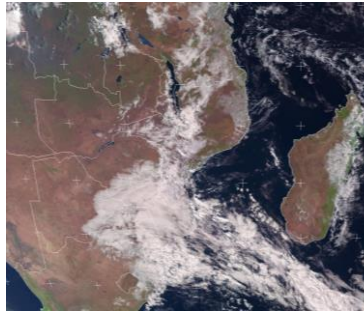




## SATELLITE-BASED GLANCE AT THIS MORNING, SUNDAY 01 SEPTEMBER 2024

# WEATHER REPORT & FORECAST



Cloudy and cool conditions were experienced over **Midlands, Harare and all Mashonaland Provinces**. It became partly cloudy and warm later. The rest of the country experienced mostly clear skies, cool at first becoming warm later.

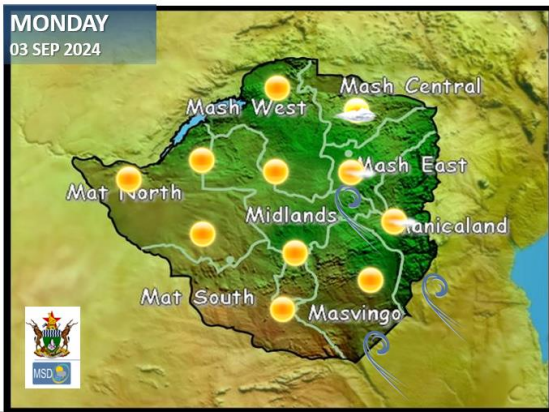


**FIRE SEASON ALERT:**  
DO NOT START ANY OUTDOOR FIRES

## WEATHER FOR TOMORROW: MONDAY 02 SEPTEMBER 2024



GOVERNMENT OF ZIMBABWE  
MINISTRY OF ENVIRONMENT, CLIMATE AND WILDLIFE  
METEOROLOGICAL SERVICES DEPARTMENT  
P.O. BOX 189 BELVEDERE, HARARE, ZIMBABWE  
PHONE: +263 242 778 161 / +263 778 125 911  
All correspondence should be addressed to the Director



**Morning:** Mostly clear skies and cool in all areas

**Afternoon:** Sunny and warm in most areas

**Overnight:** Clear night sky and cold in most areas

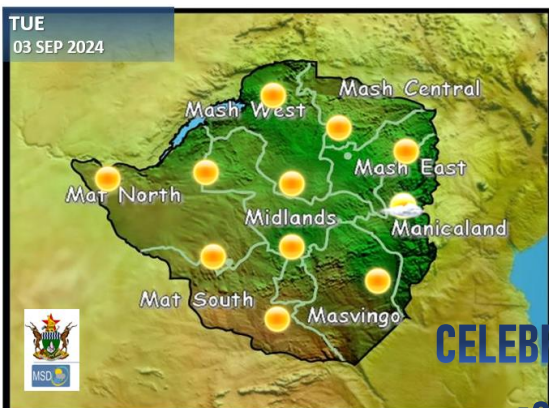
### IMPACTS & ACTIONS TO TAKE

- Windy conditions increase the risk of runaway veld fires.
- Do not start any outdoor fires, and do not leave any fire unattended.

## WEATHER OUTLOOK FOR: TUESDAY 01 SEPTEMBER 2024



GOVERNMENT OF ZIMBABWE  
MINISTRY OF ENVIRONMENT, CLIMATE AND WILDLIFE  
METEOROLOGICAL SERVICES DEPARTMENT  
P.O. BOX 189 BELVEDERE, HARARE, ZIMBABWE  
PHONE: +263 242 778 161 / +263 778 125 911  
All correspondence should be addressed to the Director



**Morning:** Mostly clear skies and cool in all areas

**Afternoon:** Sunny and warm in most areas

**Overnight:** : Clear skies and cool

### IMPACTS & ACTIONS TO TAKE

- Windy conditions increase the risk of runaway veld fires.
- Do not start any outdoor fires, and do not leave any fire unattended.

CELEBRATING 100 YEARS SINCE  
THE 1<sup>ST</sup> WEATHER FORECAST



METEOROLOGICAL SERVICES DEPARTMENT  
HOSTED IN CONJUNCTION WITH  
DEPARTMENT OF CIVIL PROTECTION &  
ZIMBABWE NATIONAL WATER AUTHORITY



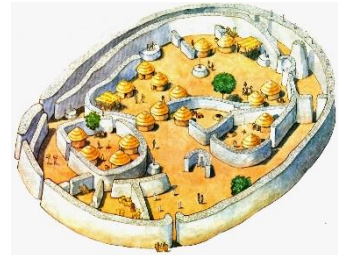


## 5-DAY FORECAST FOR MAJOR CITIES: SUN 01 SEP – THU 05 SEPTEMBER 2024



### 5-DAY FORECAST FOR HOLIDAY RESORTS:

SUN 01 SEP – THU 05 SEPTEMBER 2024



#### BULAWAYO

MON	TUE	WED	THU	FRI
22 10	24 11	24 11	26 11	28 11
0.0mm	0.0mm	0.0mm	0.0mm	0.0mm

#### CHINHOYI

MON	TUE	WED	THU	FRI
26 10	27 11	28 11	29 11	30 12
0.0mm	0.0mm	0.0mm	0.0mm	0.0mm

#### GWERU

MON	TUE	WED	THU	FRI
21 07	22 09	24 09	26 09	27 10
0.0mm	0.0mm	0.0mm	0.0mm	0.0mm

#### KADOMA

MON	TUE	WED	THU	FRI
28 10	28 10	30 10	30 10	31 13
0.0mm	0.0mm	0.0mm	0.0mm	0.0mm

#### LUPANE

MON	TUE	WED	THU	FRI
30 09	31 10	32 10	32 11	33 11
0.0mm	0.0mm	0.0mm	0.0mm	0.0mm

#### MASVINGO

MON	TUE	WED	THU	FRI
18 09	22 11	24 11	25 12	26 11
0.0mm	0.0mm	0.0mm	0.0mm	0.0mm

#### BINDUR

MON	TUE	WED	THU	FRI
27 10	27 11	28 11	29 11	30 12
0.0mm	0.0mm	0.0mm	0.0mm	0.0mm

#### GWANDA

MON	TUE	WED	THU	FRI
21 09	23 10	27 11	27 11	29 10
0.0mm	0.0mm	0.0mm	0.0mm	0.0mm

#### HARARE

MON	TUE	WED	THU	FRI
22 09	24 09	25 09	25 13	26 12
0.0mm	0.0mm	0.0mm	0.0mm	0.0mm

#### KWEKWE

MON	TUE	WED	THU	FRI
27 09	28 10	29 10	29 11	30 11
0.0mm	0.0mm	0.0mm	0.0mm	0.0mm

#### MARONDERA

MON	TUE	WED	THU	FRI
23 05	23 06	25 08	26 10	27 09
0.0mm	0.0mm	0.0mm	0.0mm	0.0mm

#### MUTARE

MON	TUE	WED	THU	FRI
22 09	22 11	23 11	24 12	30 11
0.0mm	0.0mm	0.0mm	0.0mm	0.0mm

# 5-DAY FORECAST

## FOR HOLIDAY RESORTS:

SUN 01 SEP – THU 05 SEPTEMBER 2024



### BINGA

MON	TUE	WED	THU	FRI
33 19	32 20	31 19	32 18	33 17
0.0mm	0.0mm	0.0mm	0.0mm	0.0mm

### CHINHOYI CAVES

MON	TUE	WED	THU	FRI
29 11	29 10	30 10	31 11	32 12
0.0mm	0.0mm	0.0mm	0.0mm	0.0mm

### GONAREZHOU NATIONAL PARK

MON	TUE	WED	THU	FRI
27 12	28 12	28 13	30 14	31 13
0.0mm	0.2mm	0.2mm	0.0mm	0.0mm

### HWANGE NATIONAL PARK

MON	TUE	WED	THU	FRI
30 11	30 12	31 12	32 12	32 12
0.0mm	0.0mm	0.0mm	0.0mm	0.0mm

### MATOPOS

MON	TUE	WED	THU	FRI
20 08	21 09	26 10	28 12	30 11
0.0mm	0.0mm	0.0mm	0.0mm	0.0mm

### VICTORIA FALLS

MON	TUE	WED	THU	FRI
28 12	29 12	30 12	31 13	32 14
0.0mm	0.0mm	0.0mm	0.0mm	0.0mm

### CHIMANIMANI

MON	TUE	WED	THU	FRI
22 07	23 08	25 10	25 10	28 10
0.0mm	0.0mm	0.1mm	0.0mm	0.0mm

### GREAT ZIMBABWE

MON	TUE	WED	THU	FRI
18 15	24 11	24 11	28 12	28 11
0.0mm	0.2mm	0.2mm	0.0mm	0.0mm

### HOT SPRINGS

MON	TUE	WED	THU	FRI
25 10	25 11	27 11	29 10	31 11
0.0mm	0.0mm	0.0mm	0.0mm	0.0mm

### KARIBA

MON	TUE	WED	THU	FRI
33 18	33 19	32 18	33 17	34 16
0.0mm	0.0mm	0.0mm	0.0mm	0.0mm

### NYANGA

MON	TUE	WED	THU	FRI
14 05	14 05	20 07	23 07	23 10
0.0mm	0.0mm	0.1mm	0.0mm	0.0mm

### VUMBA

SAT	SUN	MON	TUE	WED
18 12	23 11	25 10	26 11	27 10
0.0mm	0.0mm	0.1mm	0.0mm	0.0mm