



SATELLITE-BASED GLANCE AT THIS MORNING, SUNDAY 15 SEPTEMBER 2024

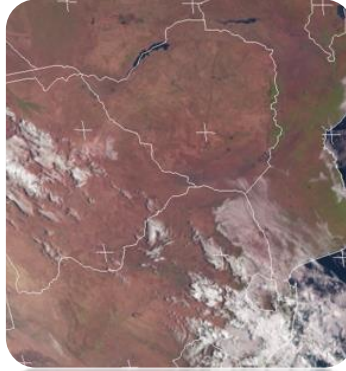
WEATHER REPORT & Forecast



FIRE SEASON ALERT:

DO NOT START ANY OUTDOOR FIRES

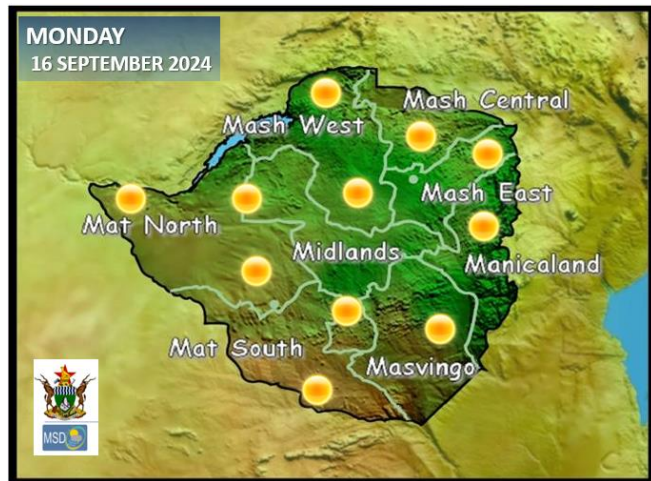
THESE DRY AND WINDY CONDITIONS INCREASE THE
RISK OF RUNAWAY VELD FIRES.



This afternoon was mostly sunny and hot, following a mild morning across the country, signaling the rapid approach of the end of winter.

However, like the last kicks of a dying horse, relatively cool winds are expected twice this week. The first wave of relatively cool winds, for this week, is currently moving through South Africa toward Zimbabwe.

WEATHER FOR TOMORROW: MONDAY 16 SEPTEMBER 2024



Morning: Mild in the early hours

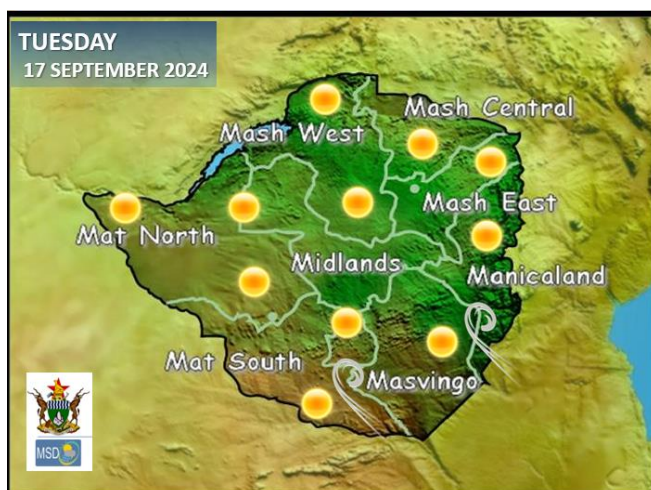
Afternoon: Sunny, hazy and hot

Overnight: Mild with a light breeze, more felt in Masvingo and Matabeleland South Provinces.

IMPACTS & ACTIONS TO TAKE

- Land preparations for agricultural purposes are vital during this period; however, it is illegal to clear-off land using fire.
- Reduce the amount of grass by hay bailing for stock feed, store some grass for mulching during pfumvudza/intwasa or sell as thatching or even brooms.

WEATHER OUTLOOK FOR: TUESDAY 17 SEPTEMBER 2024



Morning: Windy and cool in provinces such as Matabeleland South and Masvingo as well as southern parts of Manicaland. Elsewhere, should be mild with a light breeze

Afternoon: Sunny and warm over much of the country, with a light breeze time and again.

Overnight: Mild towards evening and cool overnight.

IMPACTS & ACTIONS TO TAKE

- Dry conditions increase the risk of runaway veld fires. Construct fire-guards at least 9 meters wide around your property to protect against runaway veld fires.



CELEBRATING 100 YEARS SINCE THE 1ST WEATHER FORECAST

1924 - 2024

METEOROLOGICAL SERVICES DEPARTMENT
ISSUED IN CONJUNCTION WITH
DEPARTMENT OF CIVIL PROTECTION &
ZIMBABWE NATIONAL WATER AUTHORITY





5-DAY FORECAST FOR MAJOR CITIES:

MON 16 – FRI 20 SEPTEMBER 2024

BULAWAYO

MON	TUE	WED	THU	FRI
35 16	35 16	34 17	35 17	29 18
0.0mm	0.0mm	0.0mm	0.0mm	0.0mm

CHINHOYI

MON	TUE	WED	THU	FRI
34 15	34 14	35 17	36 17	34 17
0.0mm	0.0mm	0.0mm	0.0mm	0.0mm

GWERU

MON	TUE	WED	THU	FRI
34 14	34 16	35 15	35 16	28 14
0.0mm	0.0mm	0.0mm	0.0mm	0.0mm

KADOMA

MON	TUE	WED	THU	FRI
36 15	36 15	37 16	38 16	38 16
0.0mm	0.0mm	0.0mm	0.0mm	0.0mm

LUPANE

MON	TUE	WED	THU	FRI
37 14	38 14	38 15	39 16	39 16
0.0mm	0.0mm	0.0mm	0.0mm	0.0mm

MASVINGO

MON	TUE	WED	THU	FRI
36 17	34 17	38 17	38 16	23 14
0.0mm	0.0mm	0.0mm	0.0mm	0.0mm

BINDURA

MON	TUE	WED	THU	FRI
32 16	33 17	34 17	34 18	35 16
0.0mm	0.0mm	0.0mm	0.0mm	0.0mm

GWANDA

MON	TUE	WED	THU	FRI
38 18	36 16	39 18	39 18	23 16
0.0mm	0.0mm	0.0mm	0.0mm	0.0mm

HARARE

MON	TUE	WED	THU	FRI
31 16	31 17	32 16	33 15	31 16
0.0mm	0.0mm	0.0mm	0.0mm	0.0mm

KWEKWE

MON	TUE	WED	THU	FRI
35 10	36 11	36 12	37 12	38 11
0.0mm	0.0mm	0.0mm	0.0mm	0.0mm

MARONDERA

MON	TUE	WED	THU	FRI
28 11	28 12	29 12	29 12	26 11
0.0mm	0.0mm	0.0mm	0.0mm	0.0mm

MUTARE

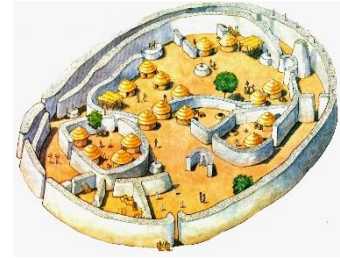
MON	TUE	WED	THU	FRI
33 14	31 15	34 15	34 16	26 15
0.0mm	0.0mm	0.0mm	0.0mm	0.0mm



5-DAY FORECAST FOR HOLIDAY RESORTS: MON 16 – FRI 20 SEPTEMBER 2024



VICTORIA FALLS
ZIMBABWE



BINGA

MON	TUE	WED	THU	FRI
38 25	37 25	37 26	38 26	38 24
0.0mm	0.0mm	0.0mm	0.0mm	0.0mm

CHINHOYI CAVES

MON	TUE	WED	THU	FRI
34 15	34 16	35 16	35 17	35 17
0.0mm	0.0mm	0.0mm	0.0mm	0.0mm

CHIREDCI/GONAREZHOU NAT. PARK

MON	TUE	WED	THU	FRI
39 17	38 17	40 18	30 18	23 18
0.0mm	0.0mm	0.0mm	0.0mm	0.0mm

HWANGE NATIONAL PARK

MON	TUE	WED	THU	FRI
35 15	35 16	36 16	37 17	35 18
0.0mm	0.0mm	0.0mm	0.0mm	0.0mm

MATOPOS

MON	TUE	WED	THU	FRI
34 13	34 14	35 14	35 15	36 15
0.0mm	0.0mm	0.0mm	0.0mm	0.0mm

VICTORIA FALLS

MON	TUE	WED	THU	FRI
37 16	37 17	38 17	39 18	34 19
0.0mm	0.0mm	0.0mm	0.0mm	0.0mm

CHIMANIMANI

MON	TUE	WED	THU	FRI
29 17	30 16	31 15	31 18	32 14
0.0mm	0.1mm	0.0mm	0.0mm	0.0mm

GREAT ZIMBABWE

MON	TUE	WED	THU	FRI
36 17	34 17	38 17	38 16	23 14
0.0mm	0.0mm	0.0mm	0.0mm	0.0mm

HOT SPRINGS

MON	TUE	WED	THU	FRI
35 13	35 13	36 14	37 16	28 16
0.0mm	0.0mm	0.0mm	0.0mm	0.0mm

KARIBA

MON	TUE	WED	THU	FRI
38 21	38 22	39 24	39 23	32 22
0.0mm	0.0mm	0.0mm	0.0mm	0.0mm

NYANGA

MON	TUE	WED	THU	FRI
27 14	26 15	28 14	29 16	22 14
0.0mm	0.1mm	0.0mm	0.0mm	0.0mm

VUMBA

MON	TUE	WED	THU	FRI
28 15	29 15	30 16	31 16	23 15
0.0mm	0.0mm	0.0mm	0.0mm	0.0mm