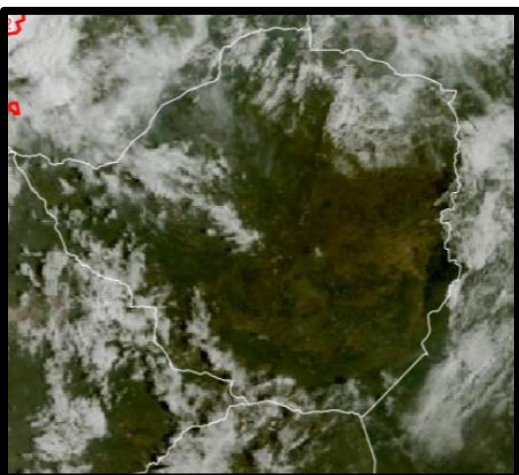




SATELLITE-BASED GLANCE INTO TODAY, SUNDAY 08 FEBRUARY 2026.

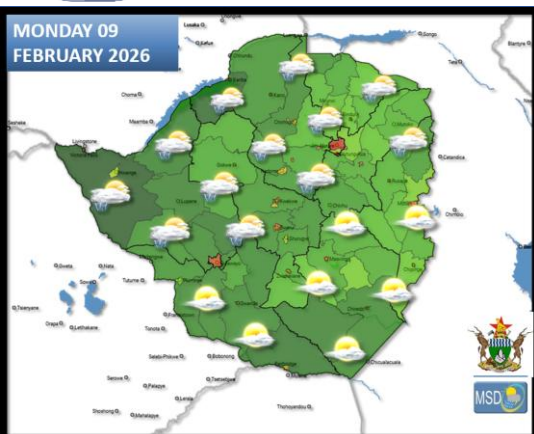


Scattered thundershowers occurred over the northern and western parts of the country yesterday, with **Robert Gabriel Mugabe International Airport and Binga** receiving **13mm and 11mm**, respectively. Most other areas recorded less than 10 mm of rainfall.

Today: The day began mostly clear and mild across much of the country, except for Matabeleland North, the northern regions, and the extreme southern districts, which were partly cloudy. By afternoon, weather conditions became partly cloudy and warm in most areas, with isolated thundershowers over Matabeleland North and Bulawayo Metropolitan Provinces.



FORECAST FOR TOMORROW: MONDAY 09 FEBRUARY 2026



Matabeleland North, Bulawayo Metropolitan, northern parts of Midlands, northern parts of Manicaland, Harare Metropolitan, and all Mashonaland provinces.

Partly cloudy and mild in the morning, becoming warm in the afternoon with scattered thundershowers and localized heavy rainfall in places.

Actions to Take:

- Seek shelter in a safe building to avoid lightning strikes.

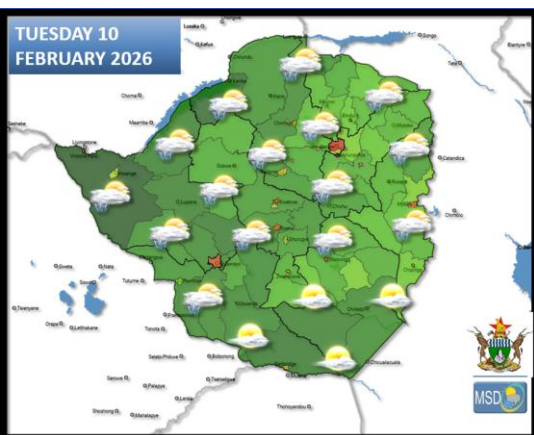
Matabeleland South, Masvingo, southern parts of Midlands and the southern parts of Manicaland provinces.

Mostly clear and mild at first with a freshening breeze. Partly cloudy and warm in the afternoon with a slight chance of isolated showers that may be thundery in places.

Actions to Take:

- Limit outdoor activities during peak heat hours.
- Stay hydrated, drink plenty of water to avoid dehydration.

WEATHER OUTLOOK FOR: TUESDAY 10 FEBRUARY 2026



All Areas:

Partly cloudy and mild conditions at first becoming mostly cloudy and warm in the afternoon with scattered thundershowers. Localized heavy rainfall is probable, with a bias towards the northern half of the country.

Actions to Take:

- Seek shelter in a safe building to avoid lightning strikes.

MAIN CITIES FORECAST: MONDAY 08 – FRIDAY 13 FEBRUARY 2026

BINDURA

MON	TUE	WED	THU	FRI
29°	29°	23°	25°	28°
				
17°	16°	18°	18°	17°
0.0 mm	0.1 mm	0.1 mm	8.5 mm	11.5 mm






BULAWAYO

MON	TUE	WED	THU	FRI
30°	30°	31°	30°	29°
				
18°	16°	18°	18°	18°
6.1 mm	0.1 mm	0.0 mm	9.7 mm	0.0 mm

CHINHOYI

MON	TUE	WED	THU	FRI
28°	28°	24°	24°	27°
				
17°	16°	17°	16°	16°
2.6 mm	0.8 mm	1.3 mm	6.0 mm	18.2 mm

KADOMA

MON	TUE	WED	THU	FRI
29°	29°	25°	27°	28°
				
18°	16°	18°	18°	18°
6.9 mm	1.1 mm	0.0 mm	10.9 mm	10.0 mm

KWEKWE

MON	TUE	WED	THU	FRI
32°	31°	28°	28°	29°
				
17°	16°	17°	18°	18°
7.8 mm	0.1 mm	0.0 mm	40.8 mm	5.6 mm

LUPANE

MON	TUE	WED	THU	FRI
30°	29°	29°	28°	28°
				
18°	16°	18°	18°	19°
8.9 mm	0.6 mm	0.2 mm	4.4 mm	6.1 mm

GWANDA

MON	TUE	WED	THU	FRI
31°	31°	33°	32°	33°
				
19°	17°	19°	20°	19°
0.0 mm	0.0 mm	0.0 mm	0.0 mm	0.0 mm

GWERU

MON	TUE	WED	THU	FRI
29°	29°	29°	28°	27°
				
17°	15°	16°	17°	17°
2.2 mm	0.0 mm	0.0 mm	9.4 mm	8.8 mm

HARARE

MON	TUE	WED	THU	FRI
28°	27°	22°	24°	24°
				
16°	16°	16°	17°	16°
0.2 mm	1.0 mm	0.5 mm	14.6 mm	9.5 mm

MARONDERA

MON	TUE	WED	THU	FRI
27°	27°	24°	25°	24°
				
14°	14°	15°	16°	14°
0.0 mm	0.0 mm	0.1 mm	24.8 mm	3.4 mm

MASVINGO

MON	TUE	WED	THU	FRI
30°	31°	32°	32°	30°
				
17°	16°	18°	19°	18°
0.0 mm	0.0 mm	0.0 mm	0.1 mm	0.0 mm

MUTARE

MON	TUE	WED	THU	FRI
27°	27°	27°	28°	27°
				
17°	15°	18°	18°	16°
0.1 mm	0.0 mm	0.2 mm	1.7 mm	0.0 mm

HOLIDAY RESORTS FORECAST: MONDAY 08 – FRIDAY 13 FEBRUARY 2026

BINGA



CHIMANIMANI



CHINHOYICAVES



HWANGENATPARK



KARIBA



MATOBO



GONAREZHOU



GREATZIMBABWE



HOTSPRINGS



NYANGA



VICFALLS



VUMBA

