



GOVERNMENT OF ZIMBABWE  
MINISTRY OF ENVIRONMENT, CLIMATE AND WILDLIFE



METEOROLOGICAL SERVICES DEPARTMENT  
P.O. BOX 88, 159 BELVEDERE, HARARE, ZIMBABWE  
PHONE: +263 242 778 161 / +263 778 125 911  
All correspondence should be addressed to the Director

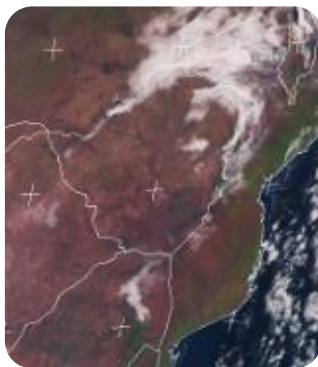
# WEATHER REPORT & Forecast



## FIRE SEASON ALERT:

DO NOT START ANY OUTDOOR FIRES

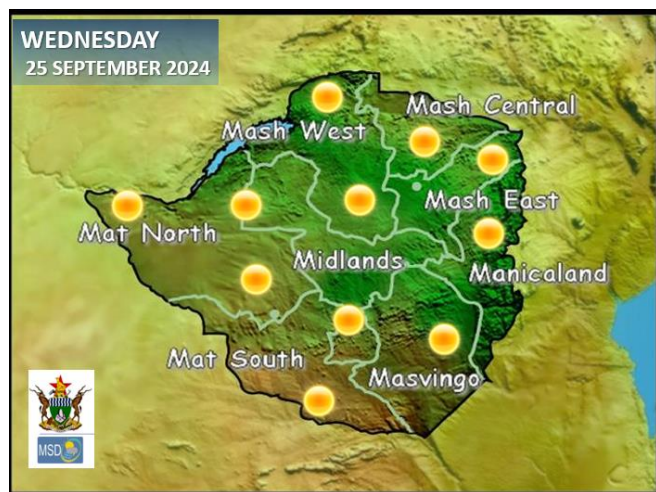
THESE DRY AND WINDY CONDITIONS INCREASE THE  
RISK OF RUNAWAY VELD FIRES.



Early this morning, it was cold (**below 10°C**) over the southern and eastern parts of the country, namely **Matabeleland South, Masvingo and Manicaland** Provinces. This was as the blanket of cloud that had previously covered these areas had curved north-eastward into the northern parts of **all Mashonaland Provinces**. These areas were the only ones with mild morning conditions. By noon, all provinces were mostly sunny and warm with a relatively warmer north-easterly airflow permeating the country.

## WEATHER FOR TOMORROW: WEDNESDAY 25 SEPTEMBER 2024

WEDNESDAY  
25 SEPTEMBER 2024



**Morning:** It should be cold in Manicaland Province and cool in all other areas, with mostly clear skies countrywide.

**Afternoon:** Sunny and hot.

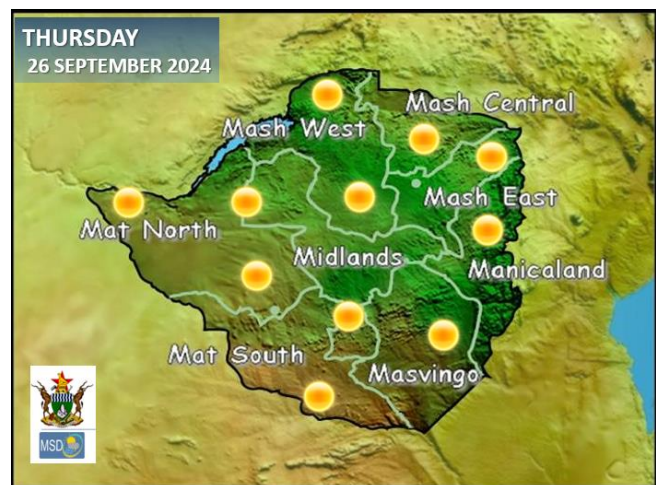
**Overnight:** Clear skies and mild.

### IMPACTS & ACTIONS TO TAKE

- Dry and breezy conditions increase the risk of runaway veld fires.
- Construct fire-guards at least 9 meters wide around your property to protect against runaway veld fires.

## WEATHER OUTLOOK FOR: THURSDAY 26 SEPTEMBER 2024

THURSDAY  
26 SEPTEMBER 2024



**Morning:** Cool countrywide with clear skies.

**Afternoon:** Hot and hazy with sunny skies.

**Overnight:** Clear skies and mild.

### IMPACTS & ACTIONS TO TAKE

- Land preparations for agricultural purposes are vital during this period; however, it is illegal to clear-off land using fire.
- For prolonged hours spent outdoors in the sun, please take precaution against dehydration. Drink adequate amounts of water and wear a sunhat. For better advice, consult a certified health practitioner.



CELEBRATING **100 YEARS** SINCE  
THE **1<sup>ST</sup> WEATHER FORECAST**  
**1924 - 2024**



METEOROLOGICAL SERVICES DEPARTMENT  
ISSUED IN CONJUNCTION WITH  
DEPARTMENT OF CIVIL PROTECTION &  
ZIMBABWE NATIONAL WATER AUTHORITY





## 5-DAY FORECAST FOR MAJOR CITIES: WED 25 – SUN 29 SEPTEMBER 2024

### BULAWAYO

WED	THUR	FRI	SAT	SUN
32 12	34 15	36 16	36 17	36 18
0.0mm	0.0mm	0.0mm	0.0mm	0.0mm

### CHINHOYI

WED	THUR	FRI	SAT	SUN
32 10	34 09	36 10	35 15	36 18
0.0mm	0.0mm	0.0mm	0.0mm	0.0mm

### GWERU

WED	THUR	FRI	SAT	SUN
31 10	32 13	34 15	34 15	35 16
0.0mm	0.0mm	0.0mm	0.0mm	0.0mm

### KADOMA

WED	THUR	FRI	SAT	SUN
33 12	35 15	36 16	36 17	36 18
0.0mm	0.0mm	0.0mm	0.0mm	0.0mm

### LUPANE

WED	THUR	FRI	SAT	SUN
34 13	35 15	37 16	37 17	38 18
0.0mm	0.0mm	0.0mm	0.0mm	0.0mm

### MASVINGO

WED	THUR	FRI	SAT	SUN
32 11	34 14	36 15	36 16	37 17
0.0mm	0.0mm	0.0mm	0.0mm	0.0mm

### BINDURA

WED	THUR	FRI	SAT	SUN
32 12	34 15	36 16	36 17	36 18
0.0mm	0.0mm	0.0mm	0.0mm	0.0mm

### GWANDA

WED	THUR	FRI	SAT	SUN
34 10	37 15	38 17	36 16	41 18
0.0mm	0.0mm	0.0mm	0.0mm	0.0mm

### HARARE

WED	THUR	FRI	SAT	SUN
30 11	32 13	33 15	32 17	31 18
0.0mm	0.0mm	0.0mm	0.0mm	0.0mm

### KWEKWE

WED	THUR	FRI	SAT	SUN
32 12	34 15	36 16	36 17	36 18
0.0mm	0.0mm	0.0mm	0.0mm	0.0mm

### MARONDERA

WED	THUR	FRI	SAT	SUN
28 09	30 10	32 11	30 13	30 12
0.0mm	0.0mm	0.0mm	0.0mm	0.0mm

### MUTARE

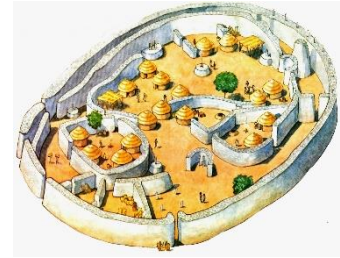
WED	THUR	FRI	SAT	SUN
32 12	34 15	36 16	36 17	36 18
0.0mm	0.0mm	0.0mm	0.0mm	0.0mm



# 5-DAY FORECAST FOR HOLIDAY RESORTS: WED 25 – SUN 29 SEPTEMBER 2024



VICTORIA FALLS  
ZIMBABWE



## BINGA

WED	THUR	FRI	SAT	SUN
33 21	36 22	38 22	39 23	39 23
0.0mm	0.0mm	0.0mm	0.0mm	0.0mm

## CHINHOYI CAVES

WED	THUR	FRI	SAT	SUN
32 10	34 09	36 10	35 15	36 18
0.0mm	0.0mm	0.0mm	0.0mm	0.0mm

## CHIREDDI/GONAREZHOU NAT. PARK

WED	THUR	FRI	SAT	SUN
33 12	37 15	38 16	36 18	40 18
0.0mm	0.0mm	0.0mm	0.0mm	0.0mm

## HWANGE NATIONAL PARK

WED	THUR	FRI	SAT	SUN
36 14	37 14	39 16	38 17	39 18
0.0mm	0.0mm	0.0mm	0.0mm	0.0mm

## MATOPOS

WED	THUR	FRI	SAT	SUN
32 12	35 14	35 16	36 17	37 18
0.0mm	0.0mm	0.0mm	0.0mm	0.0mm

## VICTORIA FALLS

WED	THUR	FRI	SAT	SUN
33 18	35 19	37 19	38 21	39 22
0.0mm	0.1mm	0.0mm	0.0mm	0.0mm

## CHIMANIMANI

WED	THUR	FRI	SAT	SUN
26 11	28 15	30 16	28 16	30 15
0.0mm	0.1mm	0.0mm	0.0mm	0.0mm

## GREAT ZIMBABWE

WED	THUR	FRI	SAT	SUN
32 11	34 14	36 15	36 16	37 17
0.0mm	0.0mm	0.0mm	0.0mm	0.0mm

## HOT SPRINGS

WED	THUR	FRI	SAT	SUN
33 14	35 16	37 16	36 17	38 18
0.0mm	0.0mm	0.0mm	0.0mm	0.0mm

## KARIBA

WED	THUR	FRI	SAT	SUN
36 20	37 21	39 23	41 25	41 26
0.0mm	0.0mm	0.0mm	0.0mm	0.0mm

## NYANGA

WED	THUR	FRI	SAT	SUN
23 09	25 11	27 13	28 14	29 13
0.0mm	0.1mm	0.0mm	0.0mm	0.0mm

## VUMBA

WED	THUR	FRI	SAT	SUN
26 11	28 13	29 15	30 15	31 16
0.0mm	0.1mm	0.0mm	0.0mm	0.0mm