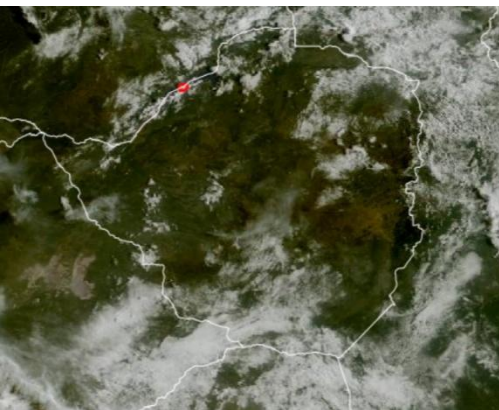




SATELLITE-BASED GLANCE INTO TODAY, MONDAY 23 MARCH 2026.



Reduction in rainfall over much of the country, led to isolated light showers (below 10mm). This is as the atmosphere is becoming less moist. Thus, for today, it was less cloudy and warmer in most areas, with brief cloudy periods and isolated showers which were thundery in places. However, towards evening, cool south-easterly winds had begun to strengthen.

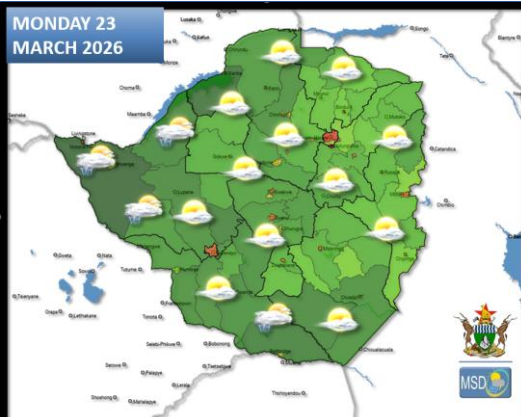
23 March 2026

WORLD
METEOROLOGICAL DAY



“Observing Today, Protecting Tomorrow”

FORECAST FOR TOMORROW: TUESDAY 24 MARCH 2026



Matabeleland South, Bulawayo Metropolitan, southern parts of Midlands, Masvingo and southern parts of Manicaland Provinces

Briefly cloudy, windy and cool at first, with light drizzle in Beitbridge, Chiredzi and Chipinge Districts. It should become less cloudy and warm by afternoon.

Actions to Take:

- Please note the expected temperature fluctuations and plan with the weather in mind.
- Keep Hydrated.

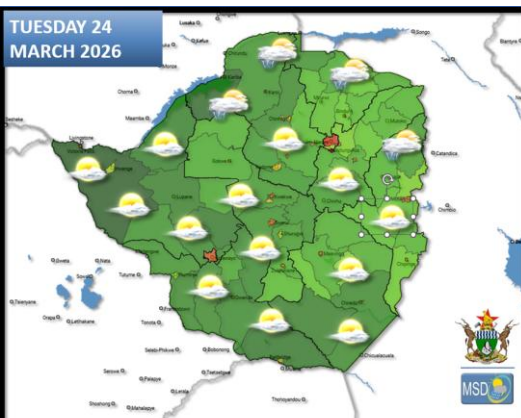
Matabeleland North, northern parts of Midlands, northern parts of Manicaland, Harare Metropolitan and all Mashonaland Provinces

Partly cloudy and mild in the morning, becoming warm by afternoon. Brief cloudy periods and isolated thundershowers are probable especially in areas along the Zambezi Valley.

Actions to Take:

- Seek shelter in a safe building to avoid lightning strikes.

WEATHER OUTLOOK FOR: WEDNESDAY 25 MARCH 2026



Matabeleland South, Bulawayo Metropolitan, southern parts of Midlands, Masvingo and Manicaland Provinces

Cloudy, windy and mild form much of the day, with light morning drizzle in places. It should become less cloudy and cool towards evening.

Actions to Take:

- Please note the expected temperature fluctuations and plan with the weather in mind.

Northern parts of Matabeleland North, and all Mashonaland Provinces

Warm in the afternoon with brief cloudy periods and isolated thundershowers especially in areas along the Zambezi Valley. Partly cloudy and mild both morning and evening.

Southern districts of Matabeleland North, northern parts of Midlands, Harare Metropolitan and all Mashonaland Provinces

Mostly sunny and warm by day, though mild at first and towards evening.

Actions to Take:

- Keep hydrated by drinking adequate amounts of water



MAIN CITIES FORECAST: TUESDAY 24 – SATURDAY 28 MARCH 2026

BINDURA

TUE	WED	THU	FRI	SAT
25°	26°	25°	26°	23°
16°	16°	16°	16°	18°
0.2 mm	1.0 mm	0.2 mm	0.3 mm	4.1 mm

BULAWAYO

TUE	WED	THU	FRI	SAT
27°	24°	26°	27°	27°
17°	17°	16°	17°	16°
0.2 mm	0.1 mm	0.3 mm	0.0 mm	0.0 mm

CHINHOYI

TUE	WED	THU	FRI	SAT
25°	26°	25°	27°	24°
16°	16°	16°	16°	17°
0.5 mm	3.9 mm	0.1 mm	6.0 mm	6.3 mm

GWANDA

TUE	WED	THU	FRI	SAT
28°	27°	30°	30°	30°
18°	18°	17°	19°	18°
0.0 mm	0.4 mm	0.6 mm	0.0 mm	0.0 mm

GWERU

TUE	WED	THU	FRI	SAT
26°	24°	26°	26°	24°
15°	17°	15°	15°	15°
0.2 mm	0.8 mm	0.6 mm	0.1 mm	0.0 mm

HARARE

TUE	WED	THU	FRI	SAT
24°	25°	24°	23°	22°
15°	15°	15°	15°	16°
0.2 mm	3.8 mm	0.4 mm	1.3 mm	7.2 mm

KADOMA

TUE	WED	THU	FRI	SAT
26°	27°	27°	27°	24°
16°	16°	16°	16°	16°
5.2 mm	11.2 mm	0.0 mm	0.6 mm	3.5 mm

KWEKWE

TUE	WED	THU	FRI	SAT
27°	27°	28°	29°	26°
16°	16°	15°	16°	16°
0.1 mm	0.3 mm	0.1 mm	0.1 mm	0.1 mm

LUPANE

TUE	WED	THU	FRI	SAT
29°	28°	28°	30°	30°
17°	18°	17°	18°	17°
1.8 mm	0.1 mm	0.4 mm	0.6 mm	0.8 mm

MARONDERA

TUE	WED	THU	FRI	SAT
23°	24°	25°	24°	21°
14°	14°	13°	14°	16°
1.7 mm	8.2 mm	2.4 mm	0.7 mm	5.1 mm

MASVINGO

TUE	WED	THU	FRI	SAT
27°	27°	29°	29°	27°
17°	17°	17°	17°	17°
0.1 mm	0.6 mm	0.1 mm	0.0 mm	0.0 mm

MUTARE

TUE	WED	THU	FRI	SAT
24°	25°	25°	25°	24°
17°	17°	16°	17°	17°
0.8 mm	2.3 mm	1.0 mm	0.1 mm	2.3 mm





HOLIDAY RESORTS FORECAST: TUESDAY 24 – SATURDAY 28 MARCH 2026

BINGA

TUE	WED	THU	FRI	SAT
29°	28°	28°	27°	28°
21°	22°	21°	20°	21°
1.4 mm	2.4 mm	3.8 mm	1.9 mm	5.7 mm

CHIMANIMANI

TUE	WED	THU	FRI	SAT
25°	25°	25°	26°	25°
15°	15°	14°	15°	15°
0.2 mm	2.4 mm	6.2 mm	0.9 mm	1.8 mm

CHINHOYICAVES

TUE	WED	THU	FRI	SAT
25°	26°	25°	26°	24°
16°	16°	16°	16°	17°
0.4 mm	3.4 mm	0.2 mm	4.8 mm	5.5 mm

GONAREZHOU

TUE	WED	THU	FRI	SAT
30°	28°	31°	31°	29°
20°	20°	20°	20°	20°
0.0 mm	0.6 mm	1.5 mm	0.2 mm	0.0 mm

GREATZIMBABWE

TUE	WED	THU	FRI	SAT
26°	25°	27°	28°	26°
17°	17°	17°	17°	17°
0.1 mm	0.7 mm	0.6 mm	0.0 mm	0.0 mm

HOTSPRINGS

TUE	WED	THU	FRI	SAT
28°	26°	28°	28°	27°
18°	17°	17°	17°	18°
0.1 mm	3.5 mm	6.1 mm	0.8 mm	1.5 mm

HWANGENATPARK

TUE	WED	THU	FRI	SAT
27°	27°	26°	28°	28°
18°	17°	17°	19°	18°
1.0 mm	7.1 mm	2.2 mm	6.6 mm	1.9 mm

KARIBA

TUE	WED	THU	FRI	SAT
29°	28°	28°	28°	28°
21°	21°	20°	20°	21°
1.9 mm	5.8 mm	4.1 mm	0.8 mm	2.2 mm

MATOBO

TUE	WED	THU	FRI	SAT
27°	24°	27°	27°	27°
17°	17°	16°	16°	17°
0.2 mm	0.2 mm	0.2 mm	0.0 mm	0.0 mm

NYANGA

TUE	WED	THU	FRI	SAT
22°	22°	23°	23°	20°
14°	13°	12°	13°	14°
3.4 mm	2.4 mm	1.6 mm	0.7 mm	3.2 mm

VICFALLS

TUE	WED	THU	FRI	SAT
27°	26°	27°	28°	28°
18°	18°	17°	17°	17°
0.9 mm	4.6 mm	1.6 mm	5.1 mm	2.2 mm

VUMBA

TUE	WED	THU	FRI	SAT
24°	25°	25°	25°	24°
17°	17°	16°	17°	17°
0.8 mm	2.3 mm	1.0 mm	0.1 mm	2.3 mm

