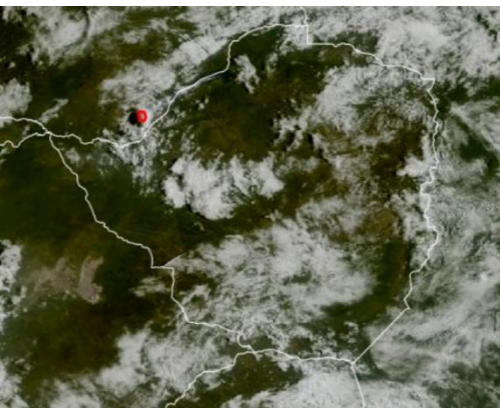




# Weather Report & Forecast

## SATELLITE-BASED GLANCE INTO TODAY, TUESDAY 24 MARCH 2026.



Yesterday, isolated showers occurred over the eastern parts of the country, although rainfall amounts were generally light (below 5mm).

Today, partly cloudy and warm conditions prevailed across much of the country, with a few areas experiencing isolated showers. There was a cool breeze in Masvingo and southern parts of Manicaland towards evening.

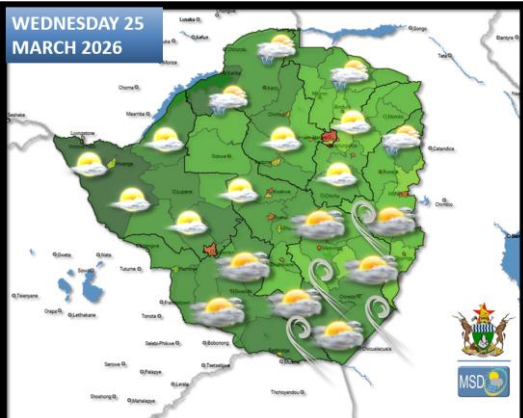
23 March 2026

WORLD METEOROLOGICAL DAY



“Observing Today, Protecting Tomorrow”

## FORECAST FOR TOMORROW: WEDNESDAY 25 MARCH 2026



**Matabeleland South, Bulawayo Metropolitan, Masvingo and southern parts of Manicaland Provinces**

Cloudy and cool at first, with patchy drizzle, becoming partly cloudy and warm in the afternoon.

**Actions to Take:**

- Please note the expected temperature fluctuations and plan with the weather in mind.

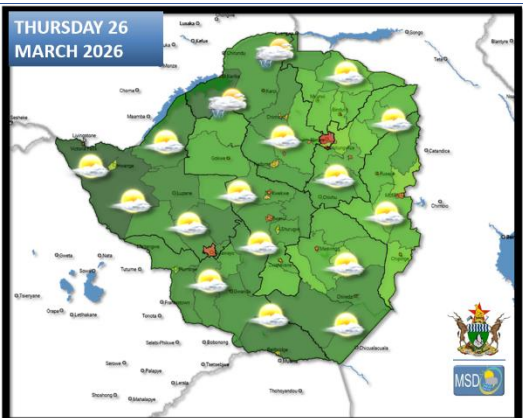
**Matabeleland North, Midlands, northern parts of Manicaland, Harare Metropolitan and all Mashonaland Provinces**

Partly cloudy and mild in the morning, becoming warm by afternoon with a slight chance of isolated thundershowers.

**Actions to Take:**

- Seek shelter in a safe building to avoid lightning strikes.

## WEATHER OUTLOOK FOR: THURSDAY 26 MARCH 2026



**All Areas:**

Partly cloudy and warm for much of the day. Isolated showers that may be thundery in the Zambezi valley are probable.

**Actions to Take:**

- Conditions are favourable for outdoor activities.
- Keep hydrated by drinking adequate amounts of water.





## MAIN CITIES FORECAST: WEDNESDAY 25 – SUNDAY 29 MARCH 2026

BINDURA						KADOMA					
WED	THU	FRI	SAT	SUN	WED	THU	FRI	SAT	SUN		
26°	25°	26°	23°	25°	27°	28°	28°	28°	27°		
15°	16°	16°	17°	17°	16°	16°	16°	16°	17°		
0.4	0.2	0.2	0.2	8.5	0.7	0.1	0.1	0.8	0.3		
mm	mm	mm	mm	mm	mm	mm	mm	mm	mm		
BULAWAYO						KWEKWE					
WED	THU	FRI	SAT	SUN	WED	THU	FRI	SAT	SUN		
24°	27°	26°	27°	28°	27°	28°	29°	28°	29°		
17°	15°	17°	17°	17°	16°	15°	16°	16°	17°		
0.1	1.2	0.0	0.0	0.0	0.1	0.2	0.1	0.1	0.0		
mm	mm	mm	mm	mm	mm	mm	mm	mm	mm		
CHINHOYI						LUPANE					
WED	THU	FRI	SAT	SUN	WED	THU	FRI	SAT	SUN		
27°	26°	27°	26°	25°	29°	29°	29°	29°	30°		
15°	16°	16°	16°	17°	19°	17°	19°	17°	18°		
0.7	0.1	3.4	0.2	4.7	0.1	0.0	0.1	6.9	0.1		
mm	mm	mm	mm	mm	mm	mm	mm	mm	mm		
GWANDA						MARONDERA					
WED	THU	FRI	SAT	SUN	WED	THU	FRI	SAT	SUN		
26°	30°	29°	30°	31°	24°	24°	25°	25°	24°		
18°	17°	19°	18°	19°	13°	13°	14°	14°	15°		
0.6	1.7	0.0	0.0	0.0	5.1	2.8	5.8	0.6	2.2		
mm	mm	mm	mm	mm	mm	mm	mm	mm	mm		
GWERU						MASVINGO					
WED	THU	FRI	SAT	SUN	WED	THU	FRI	SAT	SUN		
23°	25°	27°	26°	27°	26°	29°	30°	29°	30°		
16°	16°	16°	15°	16°	18°	17°	18°	17°	17°		
1.3	2.4	0.3	0.1	0.0	0.2	0.9	0.0	0.0	0.0		
mm	mm	mm	mm	mm	mm	mm	mm	mm	mm		
HARARE						MUTARE					
WED	THU	FRI	SAT	SUN	WED	THU	FRI	SAT	SUN		
25°	24°	25°	24°	24°	24°	26°	26°	26°	27°		
14°	15°	15°	16°	16°	17°	16°	17°	17°	17°		
0.4	1.0	4.9	0.6	5.3	0.9	1.9	0.2	0.4	0.4		
mm	mm	mm	mm	mm	mm	mm	mm	mm	mm		





## HOLIDAY RESORTS FORECAST: WEDNESDAY 25 – SUNDAY 29 MARCH 2026

### BINGA

WED	THU	FRI	SAT	SUN
28°	27°	27°	27°	28°
21°	22°	21°	21°	22°
2.9	4.2	2.8	2.6	3.9
mm	mm	mm	mm	mm

### CHIMANIMANI

WED	THU	FRI	SAT	SUN
24°	26°	26°	26°	26°
15°	14°	14°	14°	15°
0.8	2.1	1.4	0.3	0.7
mm	mm	mm	mm	mm

### CHINHOYICAVES

WED	THU	FRI	SAT	SUN
27°	26°	27°	26°	24°
15°	16°	16°	16°	17°
0.7	0.2	3.9	0.3	2.8
mm	mm	mm	mm	mm

### GONAREZHOU

WED	THU	FRI	SAT	SUN
27°	32°	32°	32°	32°
21°	21°	21°	20°	21°
0.8	1.6	0.4	0.0	0.0
mm	mm	mm	mm	mm

### GREATZIMBABWE

WED	THU	FRI	SAT	SUN
24°	28°	29°	28°	29°
18°	17°	18°	17°	18°
0.4	2.0	0.1	0.0	0.0
mm	mm	mm	mm	mm

### HOTSPRINGS

WED	THU	FRI	SAT	SUN
28°	29°	30°	29°	30°
18°	17°	18°	17°	18°
1.1	1.3	0.9	0.1	0.1
mm	mm	mm	mm	mm

### HWANGENATPARK

WED	THU	FRI	SAT	SUN
28°	27°	26°	27°	29°
17°	18°	19°	18°	17°
1.2	0.7	2.8	6.3	1.4
mm	mm	mm	mm	mm

### KARIBA

WED	THU	FRI	SAT	SUN
28°	29°	29°	28°	28°
20°	21°	20°	20°	21°
3.7	3.1	1.1	0.6	2.2
mm	mm	mm	mm	mm

### MATOBO

WED	THU	FRI	SAT	SUN
24°	27°	27°	28°	29°
17°	15°	17°	16°	17°
0.4	1.1	0.0	0.1	0.0
mm	mm	mm	mm	mm

### NYANGA

WED	THU	FRI	SAT	SUN
22°	22°	23°	22°	21°
13°	12°	13°	13°	14°
0.4	0.8	2.9	0.2	8.5
mm	mm	mm	mm	mm

### VICFALLS

WED	THU	FRI	SAT	SUN
26°	27°	26°	27°	27°
18°	17°	17°	17°	18°
4.0	2.1	8.2	4.6	11.1
mm	mm	mm	mm	mm

### VUMBA

WED	THU	FRI	SAT	SUN
24°	26°	26°	26°	27°
17°	16°	17°	17°	17°
0.9	1.9	0.2	0.4	0.4
mm	mm	mm	mm	mm

