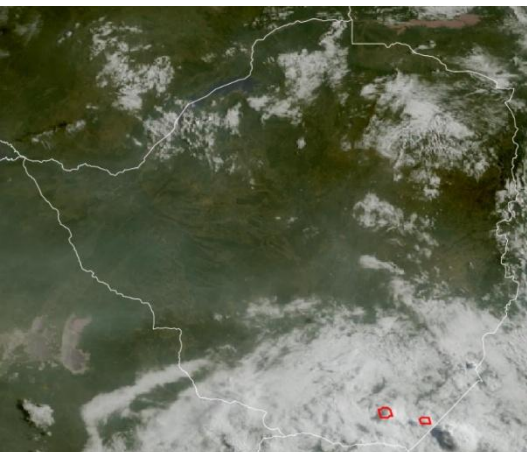




SATELLITE-BASED GLANCE INTO TODAY, MONDAY 30 MARCH 2026.

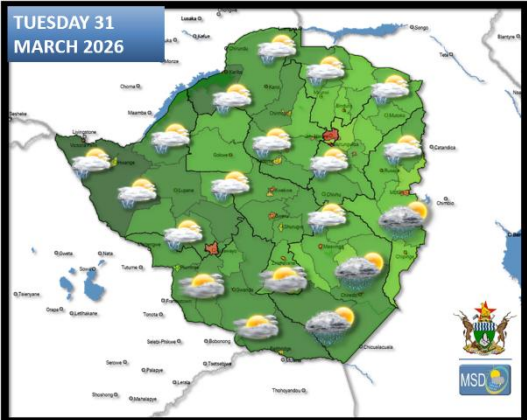


A cloud system over the southern parts of the country resulted in cloudy and cool morning conditions, with fog in parts of Masvingo province. By afternoon, it became warm with isolated thundershowers.

Elsewhere, partly cloudy and mild conditions were experienced in the morning. As the day progressed, it became mostly cloudy and warm with isolated thundershowers along the Zambezi Valley.



FORECAST FOR TOMORROW: TUESDAY 31 MARCH 2026



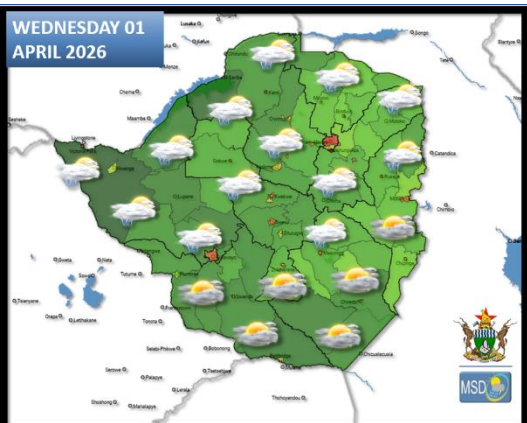
Matabeleland South, Bulawayo Metropolitan, southern parts of Midlands, Masvingo, and southern parts of Manicaland Provinces

Mostly cloudy and mild in the morning, becoming warm as the day progresses. Isolated thundershowers are probable, with heavier rainfall expected over areas such as Chipinge and Chiredzi.

Matabeleland North, northern parts of Midlands, Harare Metropolitan, northern parts of Manicaland, and all Mashonaland Provinces

Partly cloudy and warm for much of the day, with isolated showers that may be thundery. It should be mild towards evening.

WEATHER OUTLOOK FOR: WEDNESDAY 01 APRIL 2026



Matabeleland South, Bulawayo Metropolitan, southern parts of Midlands, Masvingo, Manicaland Provinces

Briefly cloudy and mild at first, becoming warm as the day progresses.

Actions to Take:

- Plan with the weather in mind.

Matabeleland North, northern parts of Midlands, Harare Metropolitan, and all Mashonaland Provinces

Mostly cloudy, and warm conditions for much of the day and with isolated showers that may be thundery. It should be mild towards evening.

Actions to Take:

- Keep hydrated by drinking adequate amounts of water.





MAIN CITIES FORECAST: TUESDAY 31 MARCH – SATURDAY 04 APRIL 2026

BINDURA					
TUE	WED	THU	FRI	SAT	
26°	23°	26°	26°	26°	
16°	17°	14°	14°	14°	
1.0	2.4	6.6	0.0	0.4	
mm	mm	mm	mm	mm	

BULAWAYO					
TUE	WED	THU	FRI	SAT	
26°	24°	24°	23°	25°	
17°	17°	14°	14°	13°	
nan	nan	nan	nan	nan	
mm	mm	mm	mm	mm	

CHINHOYI					
TUE	WED	THU	FRI	SAT	
26°	25°	25°	26°	25°	
17°	17°	14°	14°	15°	
1.4	16.8	6.2	0.1	0.1	
mm	mm	mm	mm	mm	

GWANDA					
TUE	WED	THU	FRI	SAT	
26°	27°	27°	26°	26°	
18°	17°	15°	15°	13°	
0.2	0.5	0.0	0.1	0.1	
mm	mm	mm	mm	mm	

GWERU					
TUE	WED	THU	FRI	SAT	
23°	23°	23°	23°	23°	
17°	16°	12°	13°	12°	
2.1	1.0	0.1	0.1	0.2	
mm	mm	mm	mm	mm	

HARARE					
TUE	WED	THU	FRI	SAT	
23°	24°	24°	24°	25°	
16°	16°	14°	13°	13°	
2.1	13.3	0.5	0.0	0.1	
mm	mm	mm	mm	mm	

KADOMA					
TUE	WED	THU	FRI	SAT	
24°	24°	26°	26°	27°	
17°	17°	14°	13°	13°	
0.1	0.4	3.6	0.0	0.0	
mm	mm	mm	mm	mm	

KWEKWE					
TUE	WED	THU	FRI	SAT	
24°	26°	26°	26°	27°	
17°	16°	13°	14°	12°	
0.8	0.3	0.0	0.0	0.0	
mm	mm	mm	mm	mm	

LUPANE					
TUE	WED	THU	FRI	SAT	
28°	28°	29°	27°	29°	
17°	18°	14°	14°	14°	
0.0	0.1	0.1	0.0	0.0	
mm	mm	mm	mm	mm	

MARONDERA					
TUE	WED	THU	FRI	SAT	
22°	22°	22°	22°	23°	
15°	14°	13°	12°	13°	
0.8	23.2	0.5	0.1	0.1	
mm	mm	mm	mm	mm	

MASVINGO					
TUE	WED	THU	FRI	SAT	
23°	24°	24°	22°	24°	
18°	16°	14°	14°	13°	
7.8	1.2	0.1	0.4	0.9	
mm	mm	mm	mm	mm	

MUTARE					
TUE	WED	THU	FRI	SAT	
24°	24°	24°	23°	24°	
17°	16°	14°	14°	14°	
3.4	8.8	0.8	1.2	1.2	
mm	mm	mm	mm	mm	





HOLIDAY RESORTS FORECAST: TUESDAY 31 MARCH – SATURDAY 04 APRIL 2026

Location	TUE	WED	THU	FRI	SAT
BINGA	28° 22° 0.0 mm	27° 22° 2.6 mm	27° 20° 5.9 mm	28° 19° 0.0 mm	26° 19° 0.0 mm
GONAREZHOU	29° 21° 9.1 mm	29° 19° 3.6 mm	28° 17° 0.4 mm	27° 17° 0.4 mm	27° 17° 0.6 mm
GREATZIMBABWE	22° 18° 5.9 mm	24° 16° 2.7 mm	23° 14° 0.6 mm	20° 14° 1.1 mm	23° 13° 1.6 mm
CHIMANIMANI	23° 16° 11.2 mm	23° 14° 7.4 mm	23° 12° 0.2 mm	18° 11° 0.2 mm	22° 11° 1.1 mm
CHINHOYICAVES	26° 17° 0.4 mm	24° 17° 18.7 mm	25° 14° 7.6 mm	26° 14° 0.1 mm	23° 16° 0.0 mm
HOTSPRINGS	25° 18° 13.1 mm	28° 17° 15.2 mm	27° 15° 0.1 mm	22° 15° 0.0 mm	25° 14° 0.3 mm
HWANGENATPARK	30° 17° 0.1 mm	25° 17° 1.1 mm	27° 16° 1.0 mm	27° 15° 0.0 mm	28° 14° 0.0 mm
NYANGA	23° 13° 0.1 mm	21° 12° 1.3 mm	20° 12° 0.8 mm	20° 11° 0.5 mm	22° 10° 0.7 mm
KARIBA	30° 22° 0.6 mm	28° 21° 9.0 mm	26° 20° 15.2 mm	27° 20° 7.5 mm	26° 19° 2.7 mm
VICFALLS	29° 19° 0.0 mm	25° 18° 0.2 mm	27° 16° 0.2 mm	27° 15° 0.0 mm	28° 15° 0.0 mm
MATOBO	26° 16° 0.5 mm	24° 16° 0.2 mm	24° 14° 0.1 mm	23° 14° 0.0 mm	25° 12° 0.0 mm
VUMBA	24° 17° 3.4 mm	24° 16° 8.8 mm	24° 14° 0.8 mm	23° 14° 1.2 mm	24° 14° 1.2 mm

