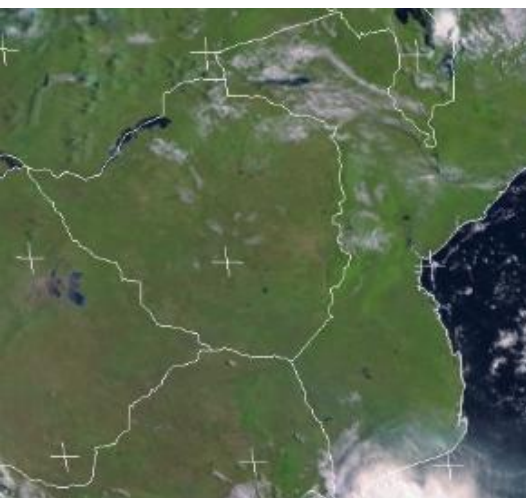


## SATELLITE-BASED GLANCE INTO TODAY, SUNDAY 29 MARCH 2026

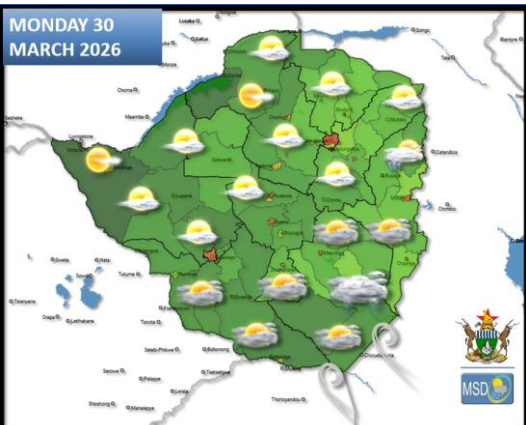


Mostly sunny and mild conditions prevailed across much of the country this morning, becoming partly cloudy and warm as the day progressed.

Meanwhile, a strengthening high-pressure system along the south-eastern coast of South Africa is driving relatively cool south-easterly winds into the southern parts of the country.



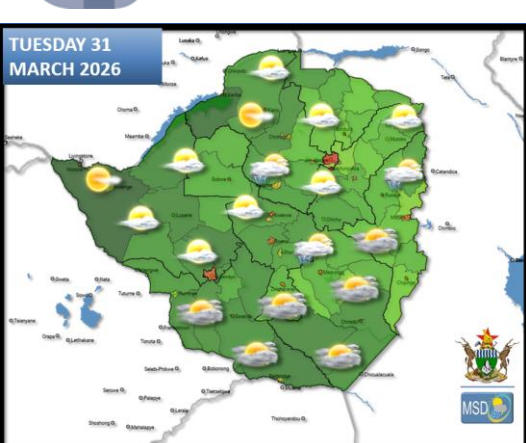
## FORECAST FOR TOMORROW: MONDAY 30 MARCH 2026



**Matabeleland South, Bulawayo Metropolitan, southern parts of Midlands, Masvingo, and southern parts of Manicaland Provinces**  
 Mostly cloudy and mild morning conditions, with patchy drizzle and rain, becoming warm as the day progresses.

**Matabeleland North, northern parts of Midlands, Harare Metropolitan, northern parts of Manicaland, and all Mashonaland Provinces**  
 Partly cloudy and mild conditions at first, becoming warm in the afternoon, with isolated showers that may be thundery. It should be mild towards evening.

## WEATHER OUTLOOK FOR: TUESDAY 31 MARCH 2026



**Matabeleland South, Bulawayo Metropolitan, southern parts of Midlands, Masvingo, Manicaland Provinces**  
 Partly cloudy with occasional cloudy intervals and mild conditions in the morning, accompanied by patchy drizzle, becoming warm as the day progresses.

**Actions to Take:**

- Plan with the weather in mind.

**Matabeleland North, northern parts of Midlands, Harare Metropolitan, and all Mashonaland Provinces**  
 Mostly fine and mild conditions at first, becoming warm in the afternoon, with isolated showers that may be thundery. It should be mild towards evening.

**Actions to Take:**

- Keep hydrated by drinking adequate amounts of water.



## MAIN CITIES FORECAST: MONDAY 30 MARCH – FRIDAY 03 APRIL 2026

### BINDURA

SUN	MON	TUE	WED	THU
28°	26°	27°	25°	26°
16°	17°	16°	17°	15°
0.1	0.1	4.7	5.5	3.2
mm	mm	mm	mm	mm

### BULAWAYO

SUN	MON	TUE	WED	THU
28°	27°	23°	23°	23°
18°	18°	17°	15°	14°
0.0	0.1	14.8	0.4	0.0
mm	mm	mm	mm	mm

### CHINHOYI

SUN	MON	TUE	WED	THU
29°	29°	25°	24°	27°
16°	17°	16°	17°	17°
0.1	0.0	1.4	17.7	4.9
mm	mm	mm	mm	mm

### KADOMA

SUN	MON	TUE	WED	THU
29°	28°	26°	24°	26°
17°	17°	17°	16°	16°
0.0	0.1	0.1	8.9	1.0
mm	mm	mm	mm	mm

### KWEKWE

SUN	MON	TUE	WED	THU
29°	30°	25°	25°	26°
16°	17°	17°	16°	15°
0.0	0.0	0.1	2.8	0.0
mm	mm	mm	mm	mm

### LUPANE

SUN	MON	TUE	WED	THU
31°	31°	28°	27°	27°
18°	18°	18°	16°	15°
0.0	0.0	0.4	0.1	0.0
mm	mm	mm	mm	mm

### GWANDA

SUN	MON	TUE	WED	THU
32°	29°	28°	27°	26°
20°	19°	18°	16°	16°
0.0	0.1	1.1	0.4	0.1
mm	mm	mm	mm	mm

### GWERU

SUN	MON	TUE	WED	THU
27°	27°	23°	23°	23°
16°	17°	17°	15°	14°
0.0	0.0	0.1	1.3	0.1
mm	mm	mm	mm	mm

### HARARE

SUN	MON	TUE	WED	THU
28°	28°	24°	23°	23°
16°	16°	16°	15°	14°
0.1	0.3	2.2	15.1	2.5
mm	mm	mm	mm	mm

### MARONDERA

SUN	MON	TUE	WED	THU
26°	27°	23°	22°	20°
14°	15°	15°	15°	14°
0.1	0.0	0.2	19.4	1.4
mm	mm	mm	mm	mm

### MASVINGO

SUN	MON	TUE	WED	THU
29°	29°	24°	25°	22°
18°	18°	18°	16°	16°
0.0	0.0	5.1	2.3	0.2
mm	mm	mm	mm	mm

### MUTARE

SUN	MON	TUE	WED	THU
28°	26°	24°	25°	23°
16°	17°	17°	16°	16°
0.0	4.9	1.2	6.4	1.5
mm	mm	mm	mm	mm





## HOLIDAY RESORTS FORECAST: MONDAY 30 MARCH – FRIDAY 03 APRIL 2026

### BINGA

	SUN	MON	TUE	WED	THU
29°	29°	28°	27°	27°	
22°	22°	22°	22°	21°	
0.6 mm	0.1 mm	1.4 mm	8.0 mm	6.9 mm	

### CHIMANIMANI

	SUN	MON	TUE	WED	THU
26°	26°	22°	24°	21°	
15°	15°	16°	15°	14°	
0.8 mm	2.3 mm	5.8 mm	6.3 mm	0.6 mm	

### CHINHOYICAVES

	SUN	MON	TUE	WED	THU
29°	29°	26°	24°	26°	
16°	17°	17°	17°	17°	
0.1 mm	0.0 mm	0.7 mm	21.4 mm	5.4 mm	

### HWANGENATPARK

	SUN	MON	TUE	WED	THU
30°	30°	29°	26°	25°	
18°	18°	18°	18°	16°	
0.0 mm	0.0 mm	0.7 mm	0.3 mm	0.1 mm	

### KARIBA

	SUN	MON	TUE	WED	THU
29°	30°	30°	27°	26°	
21°	21°	22°	21°	21°	
1.6 mm	0.2 mm	0.3 mm	4.7 mm	10.8 mm	

### MATOBO

	SUN	MON	TUE	WED	THU
29°	27°	24°	23°	24°	
18°	18°	18°	15°	14°	
0.0 mm	0.1 mm	13.4 mm	0.6 mm	0.0 mm	

### GONAREZHOU

	SUN	MON	TUE	WED	THU
33°	28°	29°	29°	29°	
22°	21°	21°	18°	18°	
0.6 mm	0.3 mm	5.4 mm	0.3 mm	0.0 mm	

### GREATZIMBABWE

	SUN	MON	TUE	WED	THU
29°	27°	23°	24°	22°	
18°	18°	18°	16°	16°	
0.0 mm	0.0 mm	4.1 mm	3.1 mm	1.0 mm	

### HOTSPRINGS

	SUN	MON	TUE	WED	THU
30°	29°	26°	27°	25°	
19°	19°	19°	17°	16°	
0.1 mm	0.3 mm	5.0 mm	9.1 mm	0.1 mm	

### NYANGA

	SUN	MON	TUE	WED	THU
24°	24°	23°	21°	20°	
13°	14°	13°	13°	13°	
0.6 mm	4.1 mm	0.4 mm	7.0 mm	1.4 mm	

### VICFALLS

	SUN	MON	TUE	WED	THU
30°	30°	29°	26°	26°	
17°	18°	18°	18°	16°	
0.0 mm	0.0 mm	1.2 mm	1.3 mm	1.1 mm	

### VUMBA

	SUN	MON	TUE	WED	THU
28°	26°	24°	25°	23°	
16°	17°	17°	16°	16°	
0.0 mm	4.9 mm	1.2 mm	6.4 mm	1.5 mm	





GOVERNMENT OF ZIMBABWE  
MINISTRY OF ENVIRONMENT, CLIMATE AND WILDLIFE

METEOROLOGICAL SERVICES DEPARTMENT  
P.O. BOX 819 BELVEDERE, HARARE, ZIMBABWE  
PHONE: +263 242 778 141 - 263 778 125 931  
All correspondence should be addressed to the Director



# Weather Report & Forecast



METEOROLOGICAL SERVICES DEPARTMENT  
ISSUED IN CONJUNCTION WITH  
DEPARTMENT OF CIVIL PROTECTION &  
ZIMBABWE NATIONAL WATER AUTHORITY

