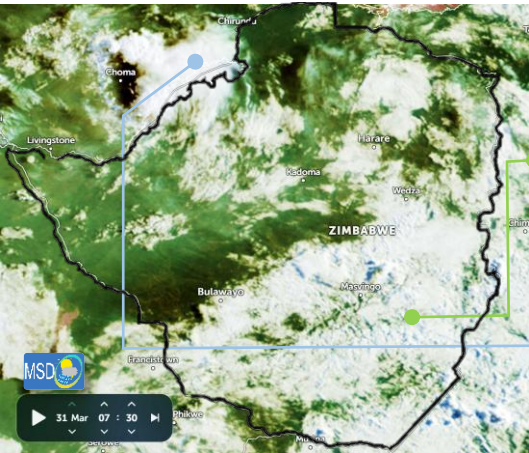




## SATELLITE-BASED GLANCE INTO TODAY, TUESDAY 31 MARCH 2026.

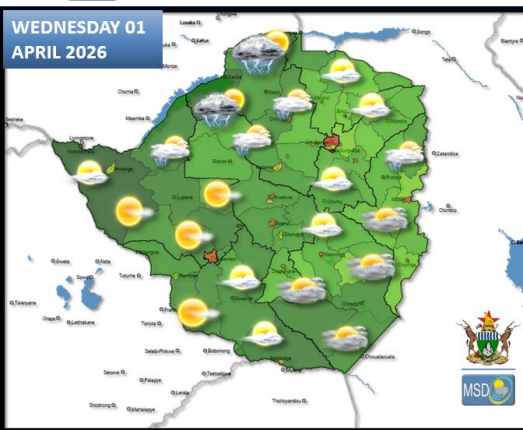


There was a cloud system over the south-eastern parts of the country, coupled with a cool and moist south-easterly airflow. This resulted in cloudy conditions in Matabeleland South, southern parts of the Midlands, Masvingo and Manicaland Provinces, with localized heavier rains in areas such as **Chipinge (32 mm), Zaka (16 mm), Chiredzi (10 mm) and Mukandi (10 mm)**

Meanwhile, in the northern parts of the country, a cloud system over Lake Kariba, is slowly drifting eastward into the country. It has so far resulted in **9mm in Kariba.**

WHEN THUNDER ROARS, IT IS ALWAYS BEST TO BE INDOORS

## FORECAST FOR TOMORROW: WEDNESDAY 01 APRIL 2026



**Matabeleland North, northern parts of Midlands, Harare Metropolitan, and all Mashonaland Provinces**

Mostly cloudy, and warm conditions for much of the day with isolated thundershowers and localized heavy rains in districts such as **Kariba, Hurungwe, Makonde and Gokwe North**. It should be mild towards evening.

Actions to Take:

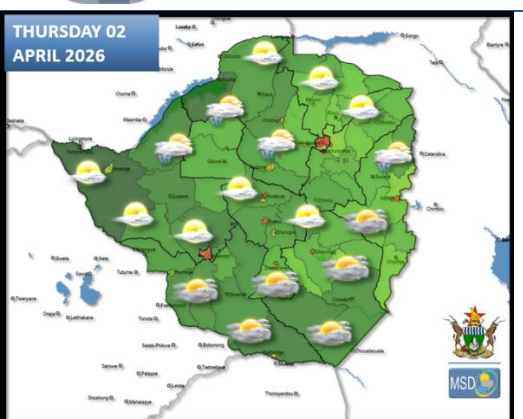
**Heavy rains may reduce visibility; it is safer to be indoors during heavy rains and thunderstorms.**

**Matabeleland South, Bulawayo Metropolitan, southern parts of Midlands, Masvingo, Manicaland Provinces**

Briefly cloudy and mild at first, becoming warm as the day progresses.

**NB: 1<sup>st</sup> of April is April Fool's Day (used to be the official New Year: Change of Season): Don't be a fool, be Weather-Wise!**

## WEATHER OUTLOOK FOR: THURSDAY 02 APRIL 2026



**Matabeleland South, Bulawayo Metropolitan, southern parts of Midlands, Masvingo, and southern parts of Manicaland Provinces**

Mostly cloudy and mild in the morning, with light rain and drizzle in places. It should become warm by afternoon.

Actions to Take:

- **Plan with the weather in mind.**

**Matabeleland North, northern parts of Midlands, Harare Metropolitan, and all Mashonaland Provinces**

Mostly sunny and warm for much of the day with brief cloudy periods and isolated thundershowers. It should be mild both morning and evening.

Actions to Take:

- **Keep hydrated by drinking adequate amounts of water.**





## MAIN CITIES FORECAST: WEDNESDAY 01 – SUNDAY 05 APRIL 2026

### BINDURA

WED	THU	FRI	SAT	SUN
23°	25°	25°	25°	25°
17°	15°	13°	14°	14°
5.1	12.0	1.4	0.0	0.1
mm	mm	mm	mm	mm

### BULAWAYO

WED	THU	FRI	SAT	SUN
24°	24°	22°	26°	25°
10°	14°	12°	13°	13°
0.1	0.0	0.0	0.1	0.0
mm	mm	mm	mm	mm

### CHINHOYI

WED	THU	FRI	SAT	SUN
24°	25°	25°	25°	27°
16°	16°	13°	14°	15°
7.1	9.1	1.6	0.1	0.1
mm	mm	mm	mm	mm

### GWANDA

WED	THU	FRI	SAT	SUN
27°	26°	25°	28°	27°
17°	15°	14°	14°	15°
0.3	0.1	0.2	0.2	0.0
mm	mm	mm	mm	mm

### GWERU

WED	THU	FRI	SAT	SUN
23°	23°	21°	24°	24°
15°	12°	12°	12°	12°
0.6	0.2	0.0	0.1	0.0
mm	mm	mm	mm	mm

### HARARE

WED	THU	FRI	SAT	SUN
22°	23°	24°	24°	25°
15°	14°	12°	14°	14°
6.9	4.4	0.2	0.1	0.1
mm	mm	mm	mm	mm

### KADOMA

WED	THU	FRI	SAT	SUN
24°	26°	27°	27°	28°
17°	14°	12°	14°	14°
2.1	1.2	0.0	0.0	0.0
mm	mm	mm	mm	mm

### KWEKWE

WED	THU	FRI	SAT	SUN
25°	26°	25°	28°	28°
16°	13°	13°	13°	13°
1.9	0.0	0.0	0.0	0.0
mm	mm	mm	mm	mm

### LUPANE

WED	THU	FRI	SAT	SUN
26°	28°	27°	29°	30°
17°	13°	13°	13°	15°
1.7	0.0	0.0	0.0	0.0
mm	mm	mm	mm	mm

### MARONDERA

WED	THU	FRI	SAT	SUN
21°	22°	22°	24°	24°
14°	12°	11°	13°	12°
3.0	1.1	0.0	0.1	0.0
mm	mm	mm	mm	mm

### MASVINGO

WED	THU	FRI	SAT	SUN
24°	24°	22°	25°	25°
15°	13°	14°	13°	13°
2.2	0.1	0.2	1.1	0.0
mm	mm	mm	mm	mm

### MUTARE

WED	THU	FRI	SAT	SUN
24°	23°	23°	24°	24°
15°	14°	13°	13°	14°
8.0	0.9	0.6	0.4	0.2
mm	mm	mm	mm	mm





## HOLIDAY RESORTS FORECAST: WEDNESDAY 01 – SUNDAY 05 APRIL 2026

### BINGA

WED	THU	FRI	SAT	SUN
28°	25°	25°	27°	27°
22°	20°	19°	18°	20°
6.8	1.7	0.0	0.0	0.0
mm	mm	mm	mm	mm

### CHIMANIMANI

WED	THU	FRI	SAT	SUN
22°	22°	22°	23°	24°
14°	12°	11°	12°	12°
5.4	0.1	0.1	0.8	0.6
mm	mm	mm	mm	mm

### CHINHOYICAVES

WED	THU	FRI	SAT	SUN
24°	26°	25°	25°	25°
16°	16°	13°	15°	16°
6.6	8.4	1.3	0.0	0.2
mm	mm	mm	mm	mm

### GONAREZHOU

WED	THU	FRI	SAT	SUN
28°	27°	26°	28°	28°
18°	17°	17°	16°	17°
3.4	0.1	0.2	2.8	0.2
mm	mm	mm	mm	mm

### GREATZIMBABWE

WED	THU	FRI	SAT	SUN
22°	23°	19°	24°	24°
15°	13°	14°	13°	14°
2.7	0.9	0.8	2.1	0.1
mm	mm	mm	mm	mm

### HOTSPRINGS

WED	THU	FRI	SAT	SUN
27°	26°	24°	26°	26°
17°	15°	14°	14°	15°
5.8	0.1	0.0	0.5	0.1
mm	mm	mm	mm	mm

### HWANGENATPARK

WED	THU	FRI	SAT	SUN
27°	27°	26°	27°	29°
17°	14°	14°	13°	15°
0.2	0.2	0.0	0.0	0.0
mm	mm	mm	mm	mm

### KARIBA

WED	THU	FRI	SAT	SUN
26°	25°	25°	27°	27°
22°	21°	21°	19°	20°
2.4	20.6	8.1	2.7	0.5
mm	mm	mm	mm	mm

### MATOBO

WED	THU	FRI	SAT	SUN
24°	24°	22°	26°	25°
16°	14°	13°	12°	13°
0.1	0.1	0.0	0.1	0.0
mm	mm	mm	mm	mm

### NYANGA

WED	THU	FRI	SAT	SUN
19°	20°	21°	22°	22°
12°	11°	10°	11°	11°
9.3	2.1	0.2	0.3	0.4
mm	mm	mm	mm	mm

### VICFALLS

WED	THU	FRI	SAT	SUN
26°	26°	25°	27°	28°
17°	15°	14°	14°	15°
3.8	0.9	0.0	0.0	0.0
mm	mm	mm	mm	mm

### VUMBA

WED	THU	FRI	SAT	SUN
24°	23°	23°	24°	24°
15°	14°	13°	13°	14°
8.0	0.9	0.6	0.4	0.2
mm	mm	mm	mm	mm

