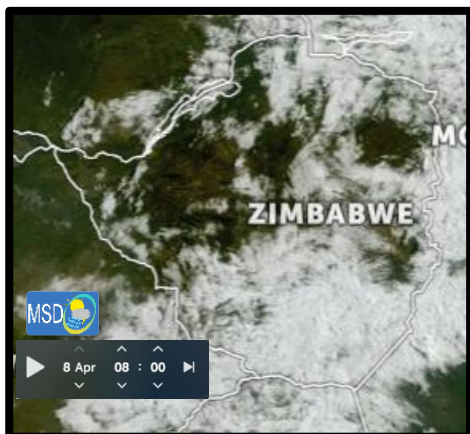


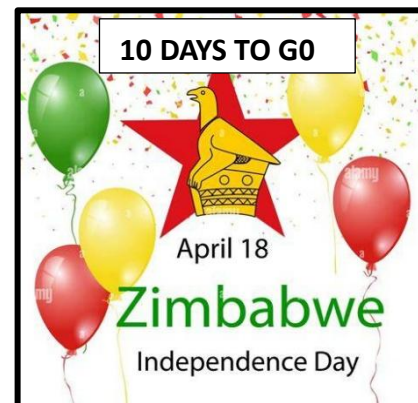


SATELLITE-BASED GLANCE INTO TODAY, WEDNESDAY 08 APRIL 2026.

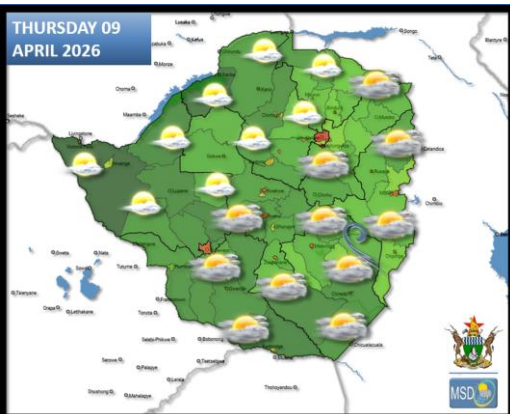


Buffalo Range, Chipinge, and Chisengu received 25 mm, 12 mm, and 10 mm of rainfall respectively yesterday. This was due to the influence of cool, moist air over the country.

Meanwhile, mostly cloudy, windy, and warm conditions prevailed for much of today, with rain and drizzle occurring in some areas, before cooling again towards evening.



FORECAST FOR TOMORROW: THURSDAY 09 APRIL 2026



Bulawayo, Matabeleland South, southern parts of Midlands, Masvingo, Harare Metropolitan, Mashonaland East and Manicaland Provinces

Cloudy, windy and mild for much of the day, with rain and drizzle in some areas. It should be mild in the morning and cool towards evening.

Actions to Take:

- Keep warm;
- Ensure the elderly and very young are kept warm.

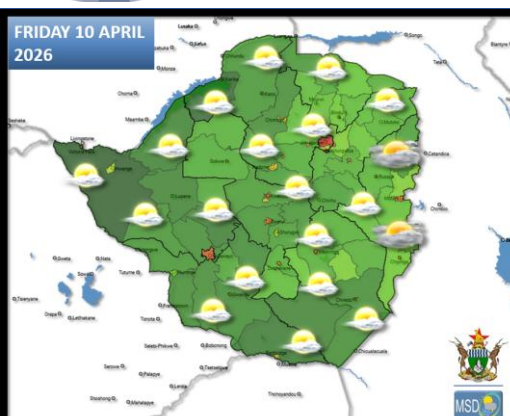
Matabeleland North, northern parts of Midlands, Mashonaland West and Central Provinces

Mild at first, becoming warm as the day progresses under partly cloudy skies. There is a chance of isolated showers in some areas.

Actions to Take:

- Conditions are favourable for outdoor activities

WEATHER OUTLOOK FOR: FRIDAY 10 APRIL 2026



Manicaland Province

Mostly cloudy, windy and mild in the morning with a chance of light rain and drizzle. Becoming less cloudy by afternoon.

Actions to Take:

- Keep warm;
- Ensure the elderly and very young are kept warm.

Matabeleland North, Matabeleland South, Bulawayo, Midlands, Masvingo, Harare Metropolitan, and all Mashonaland Provinces

Partly cloudy and warm for much of the day with a chance of light showers in some areas. Mild in the morning and towards evening.

Actions to Take:

- Conditions are favourable for outdoor activities





MAIN CITIES FORECAST: THURSDAY 09 – MONDAY 13 APRIL 2026

BINDURA



BULAWAYO



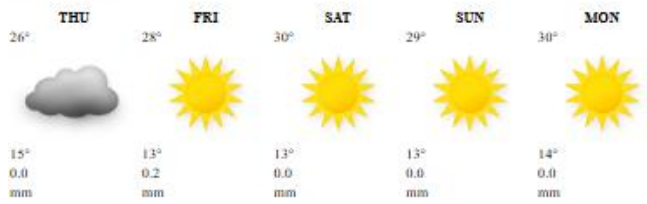
CHINHOYI



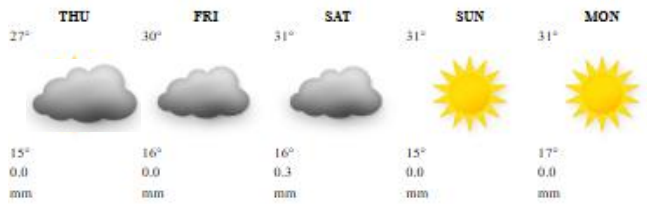
KADOMA



KWEKWE



LUPANE



GWANDA



GWERU



HARARE



MARONDERA



MASVINGO



MUTARE





HOLIDAY RESORTS FORECAST: THURSDAY 09 – MONDAY 13 APRIL 2026

BINGA

THU	FRI	SAT	SUN	MON
27°	27°	28°	28°	28°
21°	21°	21°	21°	21°
0.7 mm	0.2 mm	0.1 mm	0.0 mm	0.4 mm

CHIMANIMANI

THU	FRI	SAT	SUN	MON
24°	25°	25°	25°	26°
13°	13°	13°	12°	13°
2.1 mm	0.6 mm	0.1 mm	0.0 mm	0.0 mm

CHINHOYICAVES

THU	FRI	SAT	SUN	MON
23°	27°	28°	27°	28°
14°	15°	15°	15°	15°
1.0 mm	0.2 mm	0.1 mm	0.1 mm	0.0 mm

GONAREZHOU

THU	FRI	SAT	SUN	MON
27°	28°	29°	29°	30°
16°	16°	16°	17°	17°
0.6 mm	0.0 mm	0.0 mm	0.0 mm	0.0 mm

GREATZIMBABWE

THU	FRI	SAT	SUN	MON
24°	25°	25°	27°	29°
15°	14°	14°	14°	15°
2.1 mm	0.1 mm	0.0 mm	0.0 mm	0.0 mm

HOTSPRINGS

THU	FRI	SAT	SUN	MON
26°	27°	28°	28°	30°
15°	15°	15°	15°	16°
0.5 mm	0.1 mm	0.0 mm	0.0 mm	0.0 mm

HWANGENATPARK

THU	FRI	SAT	SUN	MON
27°	29°	30°	31°	30°
15°	19°	18°	17°	17°
0.0 mm	0.0 mm	0.0 mm	0.0 mm	0.1 mm

KARIBA

THU	FRI	SAT	SUN	MON
27°	28°	28°	29°	28°
19°	19°	19°	19°	20°
2.5 mm	2.6 mm	0.2 mm	0.0 mm	0.0 mm

MATOBO

THU	FRI	SAT	SUN	MON
25°	26°	27°	28°	30°
13°	13°	13°	13°	15°
0.4 mm	0.1 mm	0.0 mm	0.0 mm	0.0 mm

NYANGA

THU	FRI	SAT	SUN	MON
21°	23°	24°	23°	23°
12°	12°	12°	11°	12°
2.0 mm	0.4 mm	0.3 mm	0.2 mm	0.0 mm

VICFALLS

THU	FRI	SAT	SUN	MON
25°	29°	30°	30°	30°
15°	16°	16°	17°	17°
0.0 mm	62.5 mm	0.0 mm	0.0 mm	0.0 mm

VUMBA

THU	FRI	SAT	SUN	MON
23°	24°	25°	25°	27°
14°	14°	14°	13°	14°
3.1 mm	0.6 mm	0.0 mm	0.0 mm	0.0 mm

