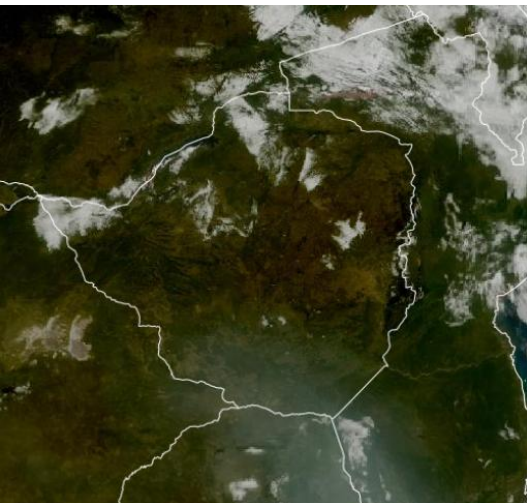




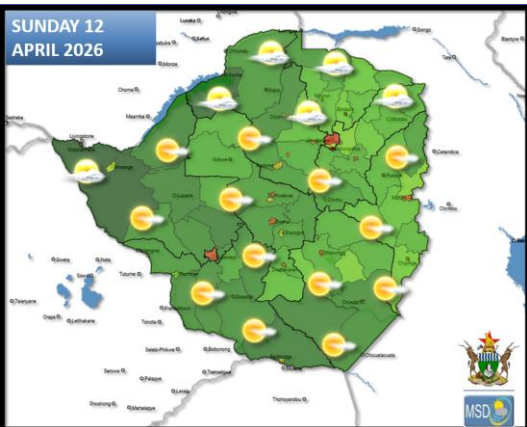
SATELLITE-BASED GLANCE INTO TODAY, SATURDAY 11 APRIL 2026.



Today, it was cool in the morning in all areas, but by afternoon, it had become warm countrywide with mostly clear skies.



FORECAST FOR TOMORROW: SUNDAY 12 APRIL 2026



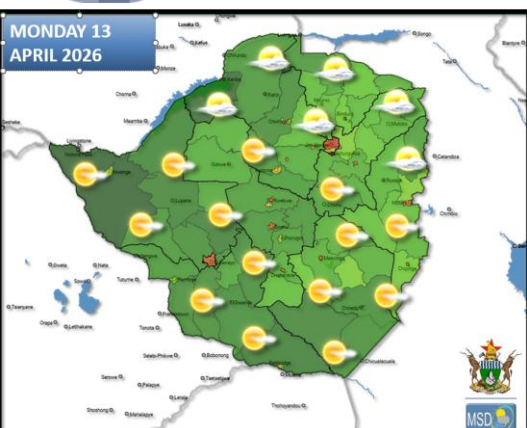
All Areas:

Mostly sunny and warm by day. Cool both in the morning and overnight.

Actions to Take:

- Conditions are favourable for outdoor activities
- Keep hydrated by drinking adequate amounts of water.
- Warm clothing might be required in the evening, especially if outdoors.

WEATHER OUTLOOK FOR: MONDAY 13 APRIL 2026



All Areas

Sunny and warm conditions are expected across most of the country, although partly cloudy conditions are anticipated over the northern regions. It will be cool in the morning and overnight.

Actions to Take:

- Keep hydrated by drinking adequate amounts of water.
- Wear a sunhat or/and sun-screen if you need to be outdoor for a prolonged period of time
- Conditions are favourable for outdoor activities.
- Warm clothing might be required in the evening, especially if outdoors.



MAIN CITIES FORECAST: SUNDAY 12 – TUESDAY 16 APRIL 2026

BINDURA

SUN	MON	TUE	WED	THU
26°	27°	26°	27°	28°
13°	15°	15°	15°	16°
0.0	0.0	0.1	0.1	0.0
mm	mm	mm	mm	mm

BULAWAYO

SUN	MON	TUE	WED	THU
28°	29°	28°	27°	27°
13°	14°	16°	17°	16°
0.0	0.0	0.0	0.0	0.0
mm	mm	mm	mm	mm

CHINHOYI

SUN	MON	TUE	WED	THU
27°	28°	28°	28°	26°
14°	14°	15°	15°	17°
0.0	0.0	0.1	0.1	0.1
mm	mm	mm	mm	mm

KADOMA

SUN	MON	TUE	WED	THU
29°	29°	29°	29°	27°
14°	14°	16°	16°	18°
0.0	0.0	0.0	0.0	0.0
mm	mm	mm	mm	mm

KWEKWE

SUN	MON	TUE	WED	THU
29°	29°	29°	30°	28°
12°	13°	14°	14°	16°
0.0	0.0	0.0	0.0	0.0
mm	mm	mm	mm	mm

LUPANE

SUN	MON	TUE	WED	THU
30°	31°	30°	31°	29°
14°	16°	16°	17°	16°
0.0	0.0	0.0	0.0	0.7
mm	mm	mm	mm	mm

GWANDA

SUN	MON	TUE	WED	THU
29°	31°	30°	29°	30°
15°	16°	16°	18°	18°
0.0	0.0	0.0	0.0	0.0
mm	mm	mm	mm	mm

GWERU

SUN	MON	TUE	WED	THU
27°	29°	28°	28°	25°
12°	13°	14°	14°	17°
0.0	0.0	0.0	0.0	0.0
mm	mm	mm	mm	mm

HARARE

SUN	MON	TUE	WED	THU
26°	26°	26°	27°	24°
14°	15°	15°	15°	16°
0.0	0.0	0.0	0.0	0.2
mm	mm	mm	mm	mm

MARONDERA

SUN	MON	TUE	WED	THU
26°	26°	26°	27°	25°
0°	13°	13°	13°	15°
12°	0.0	0.0	0.0	0.0
mm	mm	mm	mm	mm

MASVINGO

SUN	MON	TUE	WED	THU
28°	29°	29°	28°	28°
0.0	14°	16°	17°	18°
13°	0.0	0.0	0.0	0.0
mm	mm	mm	mm	mm

MUTARE

SUN	MON	TUE	WED	THU
27°	27°	25°	27°	27°
14°	14°	14°	13°	16°
0.0	0.0	0.0	0.0	0.0
mm	mm	mm	mm	mm





HOLIDAY RESORTS FORECAST: SUNDAY 12 – THURSDAY 16 APRIL 2026

BINGA

SUN	MON	TUE	WED	THU
28°	29°	28°	28°	29°
20°	20°	21°	22°	21°
0.0	0.0	0.0	0.1	0.8
mm	mm	mm	mm	mm

CHIMANIMANI

SUN	MON	TUE	WED	THU
25°	26°	25°	26°	26°
12°	13°	13°	13°	14°
0.0	0.0	0.1	0.0	0.0
mm	mm	mm	mm	mm

CHINHOYICAVES

SUN	MON	TUE	WED	THU
27°	27°	27°	28°	28°
14°	15°	16°	15°	17°
0.0	0.0	0.2	0.1	0.0
mm	mm	mm	mm	mm

HWANGENATPARK

SUN	MON	TUE	WED	THU
30°	30°	29°	28°	30°
16°	16°	17°	18°	17°
0.0	0.0	0.0	0.0	1.1
mm	mm	mm	mm	mm

KARIBA

SUN	MON	TUE	WED	THU
29°	28°	29°	29°	29°
19°	19°	20°	20°	21°
0.0	0.0	0.1	0.0	0.0
mm	mm	mm	mm	mm

MATOBO

SUN	MON	TUE	WED	THU
28°	29°	28°	28°	27°
13°	14°	15°	16°	16°
0.0	0.0	0.0	0.0	0.0
mm	mm	mm	mm	mm

GONAREZHOU

SUN	MON	TUE	WED	THU
30°	30°	30°	30°	30°
17°	18°	18°	17°	18°
0.0	0.0	0.0	0.0	0.0
mm	mm	mm	mm	mm

GREATZIMBABWE

SUN	MON	TUE	WED	THU
26°	28°	26°	27°	27°
13°	14°	15°	16°	17°
0.0	0.0	0.0	0.0	0.0
mm	mm	mm	mm	mm

HOTSPRINGS

SUN	MON	TUE	WED	THU
28°	29°	28°	29°	29°
15°	16°	16°	16°	18°
0.0	0.0	0.0	0.0	0.0
mm	mm	mm	mm	mm

NYANGA

SUN	MON	TUE	WED	THU
24°	24°	23°	24°	23°
11°	11°	11°	11°	13°
0.0	0.0	0.4	0.0	0.5
mm	mm	mm	mm	mm

VICFALLS

SUN	MON	TUE	WED	THU
30°	30°	30°	30°	30°
15°	15°	17°	18°	17°
0.0	0.0	0.0	0.0	2.2
mm	mm	mm	mm	mm

VUMBA

SUN	MON	TUE	WED	THU
27°	27°	25°	27°	27°
14°	14°	14°	13°	16°
0.0	0.0	0.0	0.0	0.0
mm	mm	mm	mm	mm





GOVERNMENT OF ZIMBABWE
MINISTRY OF ENVIRONMENT, CLIMATE AND WILDLIFE

METEOROLOGICAL SERVICES DEPARTMENT
P.O. BOX 819 BELVEDERE, HARARE, ZIMBABWE
PHONE: +263 242 778 141 - 263 778 125 931
All correspondence should be addressed to the Director



Weather Report & Forecast



METEOROLOGICAL SERVICES DEPARTMENT
ISSUED IN CONJUNCTION WITH
DEPARTMENT OF CIVIL PROTECTION &
ZIMBABWE NATIONAL WATER AUTHORITY

