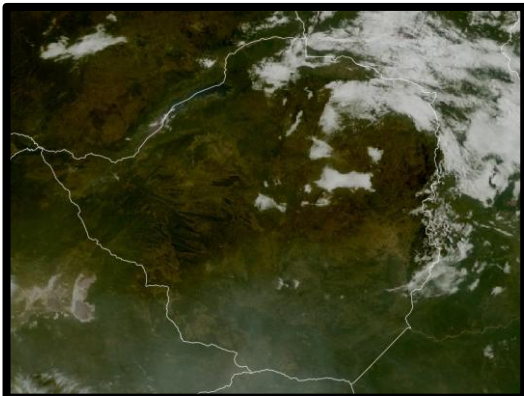




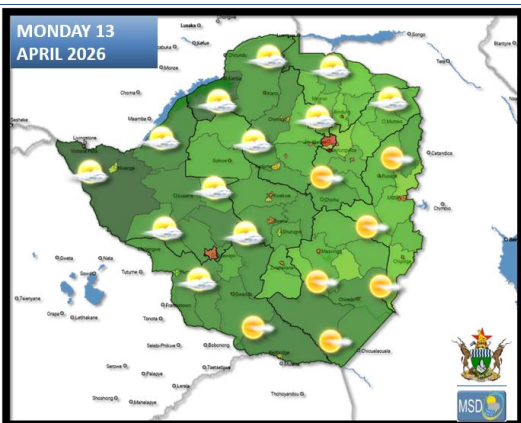
## SATELLITE-BASED GLANCE INTO TODAY, SUNDAY 12 APRIL 2026.



This morning, much of the country had clear skies and mild conditions except for the areas in the north-eastern parts which were briefly cloudy. As the day progressed, mostly sunny and warm conditions prevailed countrywide.



## FORECAST FOR TOMORROW: MONDAY 13 APRIL 2026



**Matabeleland North, Bulawayo Metropolitan, Midlands, Harare Metropolitan, and all Mashonaland Provinces.**

Clear skies and mild conditions in the morning becoming partly cloudy and warm in the afternoon. Cloudless skies and mild conditions overnight.

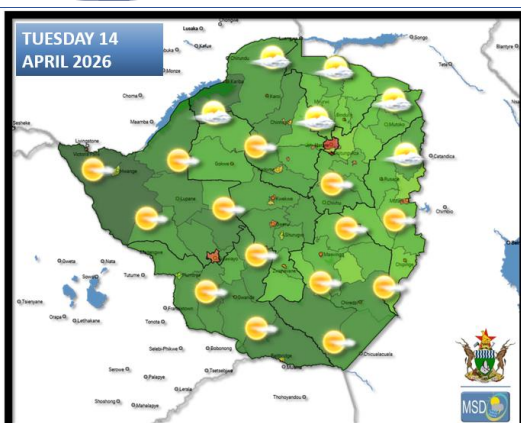
**Matabeleland South, Masvingo and Manicaland provinces.**

Sunny and warm for much of the day though mild both in the morning and evening.

Actions to Take:

- Conditions are favourable for outdoor activities
- Keep hydrated by drinking adequate amounts of water.
- Warm clothing might be required in the evening, especially if outdoors.

## WEATHER OUTLOOK FOR: TUESDAY 14 APRIL 2026



**All Areas**

Mostly sunny and warm for much of the day though mild both in the morning and in the evening. Partly cloudy and mild overnight over the extreme northern areas, and elsewhere should be cloudless.

Actions to Take:

- Keep hydrated by drinking adequate amounts of water.
- Wear a sunhat or/and sun-screen if you need to be outdoor for a prolonged period of time
- Conditions are favourable for outdoor activities.
- Warm clothing might be required in the evening, especially if outdoors.





## MAIN CITIES FORECAST: MONDAY 13 – FRIDAY 17 APRIL 2026

### BINDURA

MON	TUE	WED	THU	FRI
27°	28°	28°	27°	27°
14°	16°	16°	16°	16°
0.0	0.0	0.0	0.0	0.0
mm	mm	mm	mm	mm

### BULAWAYO

MON	TUE	WED	THU	FRI
30°	29°	26°	28°	28°
15°	16°	18°	17°	15°
0.0	0.0	0.0	0.1	0.1
mm	mm	mm	mm	mm

### CHINHOYI

MON	TUE	WED	THU	FRI
28°	28°	28°	29°	28°
14°	15°	16°	16°	16°
0.0	0.0	0.0	0.0	nan
mm	mm	mm	mm	mm

### KADOMA

MON	TUE	WED	THU	FRI
29°	29°	30°	29°	28°
15°	16°	16°	16°	16°
0.0	0.0	0.0	0.0	0.5
mm	mm	mm	mm	mm

### KWEKWE

MON	TUE	WED	THU	FRI
29°	29°	30°	29°	28°
13°	15°	16°	17°	15°
0.0	0.0	0.0	0.0	4.1
mm	mm	mm	mm	mm

### LUPANE

MON	TUE	WED	THU	FRI
31°	31°	30°	32°	30°
15°	17°	17°	17°	16°
0.0	0.0	0.0	0.5	5.2
mm	mm	mm	mm	mm

### GWANDA

MON	TUE	WED	THU	FRI
31°	30°	30°	30°	30°
16°	17°	18°	17°	16°
0.0	0.0	0.0	0.0	0.0
mm	mm	mm	mm	mm

### GWERU

MON	TUE	WED	THU	FRI
28°	28°	30°	28°	24°
13°	15°	16°	17°	15°
0.0	0.0	0.0	0.0	0.5
mm	mm	mm	mm	mm

### HARARE

MON	TUE	WED	THU	FRI
26°	26°	28°	26°	25°
14°	16°	16°	16°	15°
0.0	0.0	0.0	0.0	nan
mm	mm	mm	mm	mm

### MARONDERA

MON	TUE	WED	THU	FRI
26°	26°	27°	26°	26°
0.0	14°	14°	14°	14°
0.0	0.1	0.1	0.1	0.4
mm	mm	mm	mm	mm

### MASVINGO

MON	TUE	WED	THU	FRI
30°	30°	29°	29°	28°
0.0	15°	16°	18°	16°
0.0	0.0	0.0	0.0	0.0
mm	mm	mm	mm	mm

### MUTARE

MON	TUE	WED	THU	FRI
27°	25°	26°	26°	25°
15°	17°	16°	16°	17°
0.0	0.1	0.3	0.2	0.3
mm	mm	mm	mm	mm





## HOLIDAY RESORTS FORECAST: MONDAY 13 – FRIDAY 17 APRIL 2026

### BINGA

MON	TUE	WED	THU	FRI
28°	29°	29°	29°	28°
20°	21°	22°	22°	22°
0.0	0.0	0.0	nan	nan
mm	mm	mm	mm	mm

### CHIMANIMANI

MON	TUE	WED	THU	FRI
27°	26°	26°	25°	25°
13°	13°	13°	14°	14°
0.0	0.2	0.1	0.0	0.9
mm	mm	mm	mm	mm

### CHINHOYICAVES

MON	TUE	WED	THU	FRI
28°	28°	28°	28°	27°
15°	16°	15°	16°	16°
0.0	0.0	0.0	0.0	0.9
mm	mm	mm	mm	mm

### HWANGENATPARK

MON	TUE	WED	THU	FRI
30°	30°	29°	30°	29°
16°	17°	18°	17°	18°
0.0	0.0	0.0	0.0	2.2
mm	mm	mm	mm	mm

### KARIBA

MON	TUE	WED	THU	FRI
29°	30°	30°	30°	31°
19°	20°	20°	21°	21°
0.0	0.0	0.0	0.0	0.0
mm	mm	mm	mm	mm

### MATOBO

MON	TUE	WED	THU	FRI
30°	29°	28°	28°	28°
15°	16°	18°	17°	14°
0.0	0.0	0.0	0.2	0.1
mm	mm	mm	mm	mm

### GONAREZHOU

MON	TUE	WED	THU	FRI
30°	30°	30°	29°	29°
18°	17°	18°	18°	18°
0.0	0.0	0.0	0.0	0.0
mm	mm	mm	mm	mm

### GREATZIMBABWE

MON	TUE	WED	THU	FRI
28°	28°	27°	27°	27°
15°	16°	16°	17°	16°
0.0	0.0	0.0	0.0	0.0
mm	mm	mm	mm	mm

### HOTSPRINGS

MON	TUE	WED	THU	FRI
30°	29°	29°	28°	29°
16°	17°	16°	17°	16°
0.0	0.0	0.0	0.0	0.2
mm	mm	mm	mm	mm

### NYANGA

MON	TUE	WED	THU	FRI
24°	23°	23°	23°	21°
12°	13°	12°	13°	13°
0.1	0.8	1.5	2.1	2.8
mm	mm	mm	mm	mm

### VICFALLS

MON	TUE	WED	THU	FRI
30°	31°	30°	30°	31°
16°	17°	17°	18°	18°
0.0	0.0	0.0	0.0	nan
mm	mm	mm	mm	mm

### VUMBA

MON	TUE	WED	THU	FRI
27°	25°	26°	26°	25°
15°	17°	16°	16°	17°
0.0	0.1	0.3	0.2	0.3
mm	mm	mm	mm	mm

