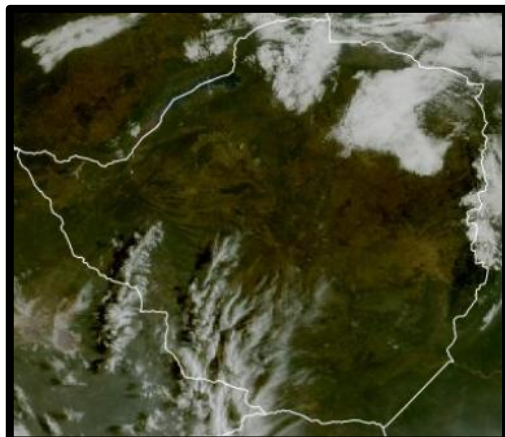




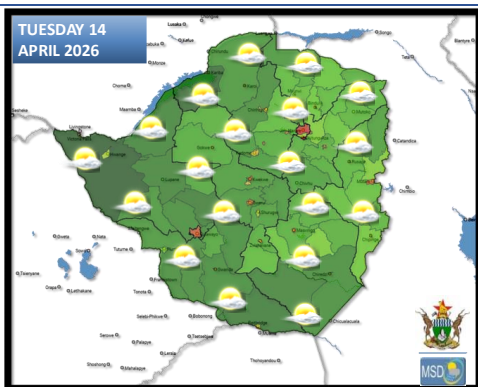
SATELLITE-BASED GLANCE INTO TODAY, MONDAY 13 APRIL 2026.



Mostly clear skies and cool conditions were experienced early this morning except for areas in Matabeleland South and the extreme northern parts of Zimbabwe which were partly cloudy. As the day progressed, mostly sunny and warm conditions prevailed countrywide.



FORECAST FOR TOMORROW: TUESDAY 14 APRIL 2026



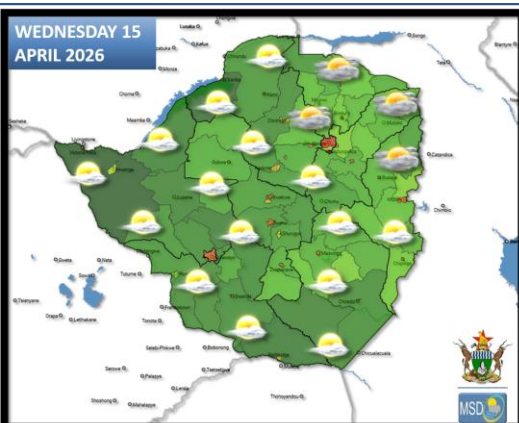
All Areas:

Mostly clear skies and cool conditions in the morning becoming partly cloudy and warm in the afternoon.

Actions to Take:

- Conditions are favourable for outdoor activities
- Keep hydrated by drinking adequate amounts of water.
- Warm clothing might be required in the evening, especially if outdoors.

WEATHER OUTLOOK FOR: WEDNESDAY 15 APRIL 2026



Mashonaland East, and the northern parts of Manicaland provinces.

Partly cloudy and cool in the morning becoming mostly cloudy and warm in the afternoon with a chance of light showers.

Mashonaland West and Central, Harare Metropolitan, Midlands, Bulawayo Metropolitan, Matabeleland North and South, Masvingo, and the southern parts of Manicaland provinces

Partly cloudy and warm for much of the day though mild both in the morning and in the evening.

Actions to Take:

- Keep hydrated by drinking adequate amounts of water.
- Wear a sunhat or/and sun-screen if you need to be outdoor for a prolonged period of time
- Conditions are favourable for outdoor activities.



MAIN CITIES FORECAST: TUESDAY 14 – SATURDAY 18 APRIL 2026

BINDURA

TUE	WED	THU	FRI	SAT
27°	27°	27°	26°	27°
15°	16°	17°	14°	15°
0.0	0.0	0.0	0.1	0.0
mm	mm	mm	mm	mm

BULAWAYO

TUE	WED	THU	FRI	SAT
30°	30°	28°	28°	29°
16°	18°	17°	15°	16°
0.0	0.0	2.1	0.4	0.1
mm	mm	mm	mm	mm

CHINHOYI

TUE	WED	THU	FRI	SAT
28°	29°	27°	28°	29°
15°	16°	17°	15°	15°
0.0	0.0	0.0	0.1	0.0
mm	mm	mm	mm	mm

KADOMA

TUE	WED	THU	FRI	SAT
30°	30°	30°	29°	30°
15°	16°	17°	17°	15°
0.0	0.0	0.1	2.1	0.0
mm	mm	mm	mm	mm

KWEKWE

TUE	WED	THU	FRI	SAT
30°	30°	29°	29°	29°
14°	17°	17°	15°	15°
0.0	0.0	0.0	0.1	0.0
mm	mm	mm	mm	mm

LUPANE

TUE	WED	THU	FRI	SAT
31°	29°	32°	30°	31°
16°	18°	17°	16°	17°
0.0	0.0	0.2	1.3	0.2
mm	mm	mm	mm	mm

GWANDA

TUE	WED	THU	FRI	SAT
31°	31°	29°	31°	30°
17°	18°	17°	16°	20°
0.0	0.0	0.1	0.0	0.1
mm	mm	mm	mm	mm

GWERU

TUE	WED	THU	FRI	SAT
28°	29°	27°	28°	28°
14°	16°	16°	14°	15°
0.0	0.0	0.0	0.0	0.0
mm	mm	mm	mm	mm

HARARE

TUE	WED	THU	FRI	SAT
26°	27°	27°	26°	26°
15°	15°	16°	14°	15°
0.0	0.1	0.0	0.1	0.0
mm	mm	mm	mm	mm

MARONDERA

TUE	WED	THU	FRI	SAT
27°	27°	25°	27°	26°
0° 14°	13°	14°	13°	14°
0.0	0.0	0.0	0.0	0.0
mm	mm	mm	mm	mm

MASVINGO

TUE	WED	THU	FRI	SAT
30°	29°	28°	31°	32°
0.0	16°	17°	16°	19°
mm	0.0	0.0	0.0	0.0
mm	mm	mm	mm	mm

MUTARE

TUE	WED	THU	FRI	SAT
25°	26°	24°	26°	28°
16°	17°	16°	15°	15°
0.0	0.5	0.2	0.1	0.1
mm	mm	mm	mm	mm





HOLIDAY RESORTS FORECAST: TUESDAY 14 – SATURDAY 18 APRIL 2026

BINGA

TUE	WED	THU	FRI	SAT
29°	28°	29°	29°	29°
20°	22°	22°	22°	22°
0.0	0.0	0.2	0.1	0.6
mm	mm	mm	mm	mm

CHIMANIMANI

TUE	WED	THU	FRI	SAT
26°	26°	25°	25°	27°
14°	14°	15°	13°	14°
0.1	0.1	0.9	3.5	0.0
mm	mm	mm	mm	mm

CHINHOYICAVES

TUE	WED	THU	FRI	SAT
28°	28°	28°	28°	28°
15°	16°	18°	15°	15°
0.0	0.0	0.0	0.9	0.0
mm	mm	mm	mm	mm

HWANGENATPARK

TUE	WED	THU	FRI	SAT
30°	29°	31°	30°	30°
16°	18°	17°	17°	20°
0.0	0.0	0.0	1.3	0.5
mm	mm	mm	mm	mm

KARIBA

TUE	WED	THU	FRI	SAT
30°	30°	30°	31°	32°
20°	21°	21°	20°	20°
0.0	0.0	0.0	0.0	0.0
mm	mm	mm	mm	mm

MATOBO

TUE	WED	THU	FRI	SAT
29°	30°	28°	29°	29°
16°	17°	16°	15°	18°
0.0	0.0	0.4	1.4	0.1
mm	mm	mm	mm	mm

GONAREZHOU

TUE	WED	THU	FRI	SAT
30°	31°	30°	30°	34°
17°	18°	18°	17°	18°
0.0	0.0	0.0	0.0	0.0
mm	mm	mm	mm	mm

GREATZIMBABWE

TUE	WED	THU	FRI	SAT
28°	28°	27°	30°	32°
16°	17°	16°	15°	18°
0.0	0.0	0.0	0.0	0.0
mm	mm	mm	mm	mm

HOTSPRINGS

TUE	WED	THU	FRI	SAT
30°	29°	28°	30°	32°
16°	17°	18°	16°	18°
0.0	0.1	0.0	1.3	0.0
mm	mm	mm	mm	mm

NYANGA

TUE	WED	THU	FRI	SAT
23°	23°	23°	23°	23°
0°	12°	13°	11°	12°
0.2	1.5	1.9	0.8	0.4
mm	mm	mm	mm	mm

VICFALLS

TUE	WED	THU	FRI	SAT
30°	29°	31°	31°	29°
16°	18°	17°	17°	18°
0.0	0.0	0.0	0.2	0.0
mm	mm	mm	mm	mm

VUMBA

TUE	WED	THU	FRI	SAT
25°	26°	24°	26°	28°
16°	17°	16°	15°	15°
0.0	0.5	0.2	0.1	0.1
mm	mm	mm	mm	mm

