



## WEEKLY RAINFALL BULLETIN

**RELEASED:** 02 APRIL 2026  
**SEASON:** 2025-2026  
**VALID:** 03 APRIL TO 08 APRIL 2026

### WEEKLY RAINFALL

### BULLETIN

BULLETIN N°23 of rainfall Season 2025/2026



### Contents

Summary of the past week... ..... 2  
 Seasonal Accumulated Precipitation... .....3  
 Normal Precipitation Percentage..... 4  
 Evaporation... ..... 5  
 Weather Outlook for the Week Ending 08-04-2026..... 6

for more information and weather updates follow us on:

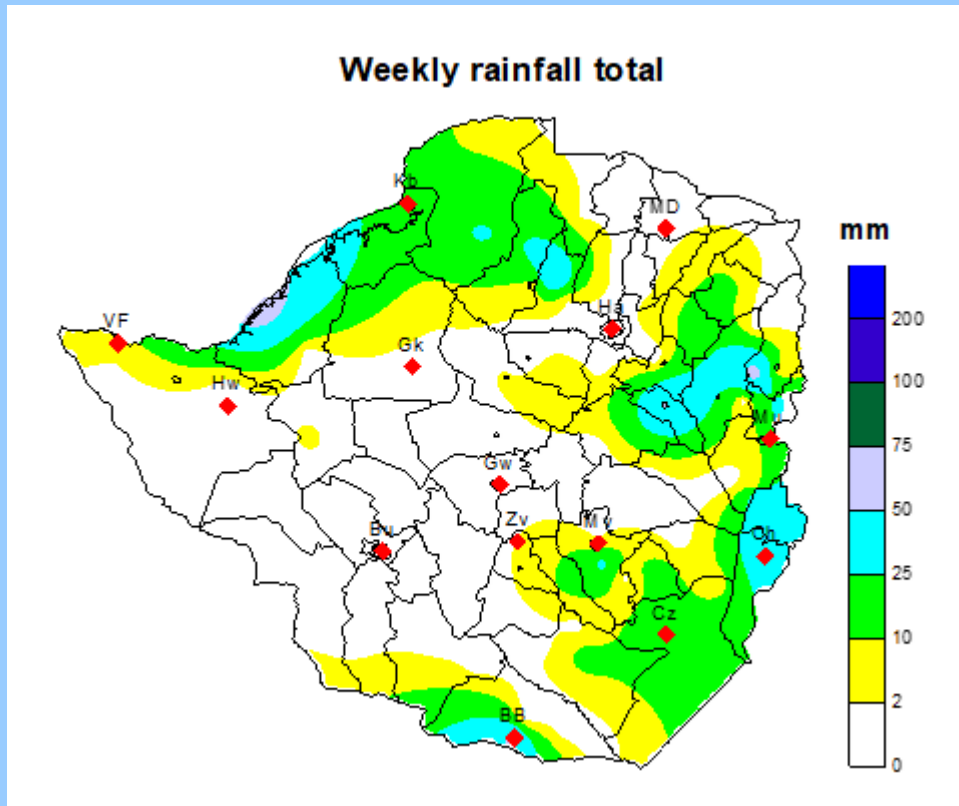
**X:** <https://x.com/MSDZIM>

Facebook: <https://www.facebook.com/Meteorological-Services-Department-of-Zimbabwe-1466334176961651/>

**Website:** <https://www.weatherzw.org.zw>

 +263778125911

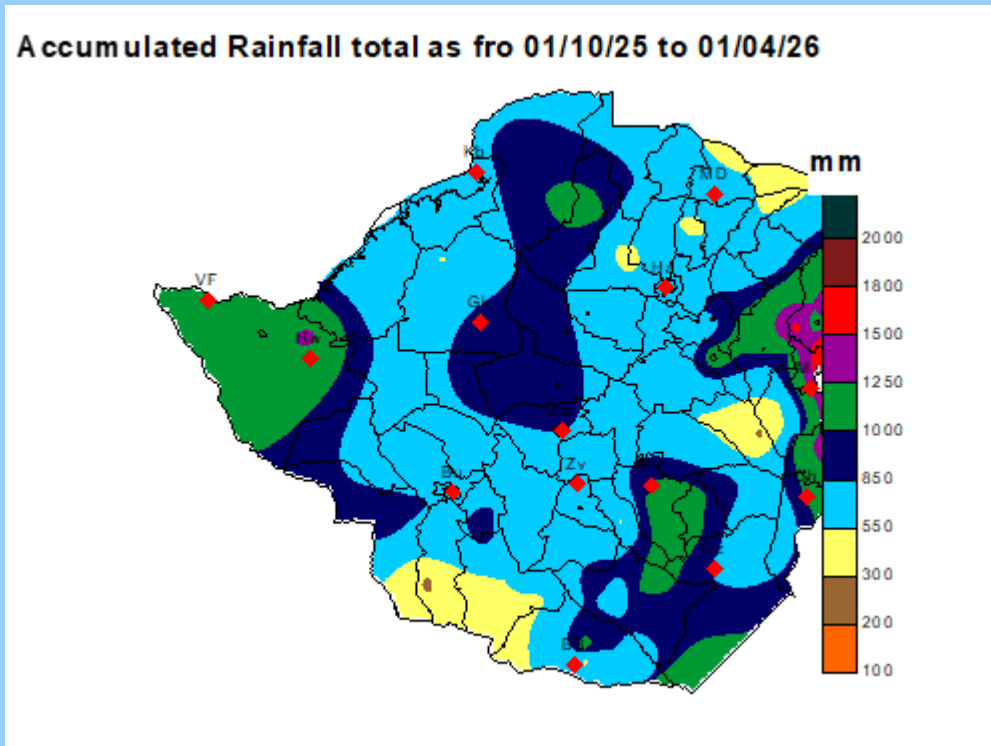
**SUMMARY OF PAST WEEK: 25 MARCH 2026 – 01 APRIL 2026**



**FIGURE 1: WEEKLY RAINFALL TOTALS: 25 MARCH 2026 TO 01 APRIL 2026**

During the review period much of the country experienced widespread rainfall. The highest weekly totals were recorded in areas such as Binga (71 mm), Hauna (63 mm), Beitbridge (54 mm), Wedza (53 mm) and Banket (46 mm) as illustrated in Figure 1.

**SEASONAL ACCUMULATED RAINFALL: 01 OCTOBER 2025 – 01 APRIL 2026**



**FIGURE 2: SEASONAL RAINFALL TOTALS: 01 OCTOBER 2025 -01 APRIL 2026**

Between 1 October 2025 and 1 April, seasonal rainfall totals to date shows most of the country has received over 550 mm, except for a few areas in Mashonaland Central and parts of Matabeleland South, shown in yellow on the map below (Figure 2). In contrast, parts of Hwange in Matabeleland North and the far eastern areas including Mutasa, Mutare, and Chimanimani in Manicaland have recorded over 1 250 mm, shown in purple and red in Figure 2 below. The highest seasonal totals were in Mutasa district where Mukandi has received 1 828 mm and Zindi, 1 978 mm.

## SEASONAL RAINFALL PERCENTAGE OF NORMAL: 1 OCTOBER 2025 – 01 APRIL 2026

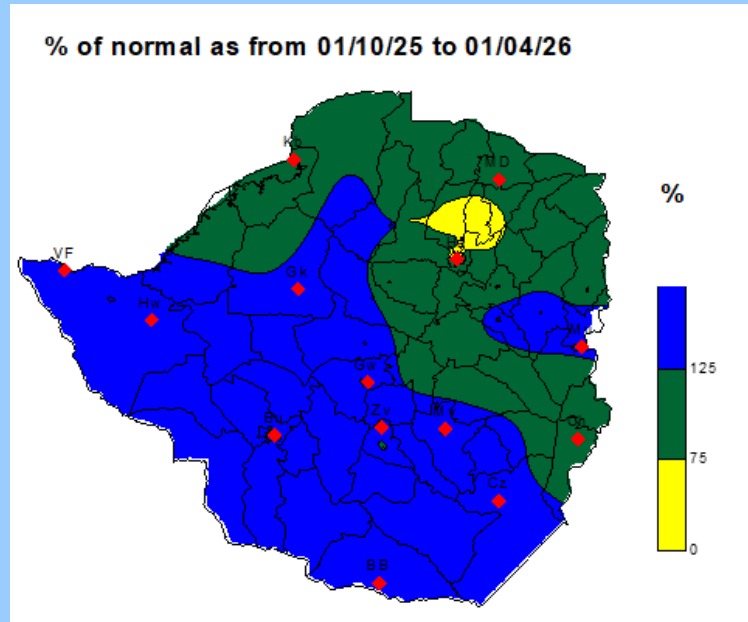


FIGURE 3: ACCUMULATION RAINFALL AS PERCENTAGE OF AVERAGE: 1 OCTOBER 2025-01 APRIL 2026

Wetter than normal conditions dominated the season across much of the country, with above normal rainfall (shaded blue) recorded in Matabeleland North, Matabeleland South, Masvingo, and the parts of Midlands and Manicaland. The northern areas, including Mashonaland East, Mashonaland Central, and parts of Mashonaland West and Manicaland, were within the normal range (shaded green). In parts of Zvimba, Mazowe, Bindura, Shamva and Goromonzi districts, drier than normal conditions have characterized most of the season, resulting in seasonal rainfall below the long-term average (yellow colour) as shown by the map above.

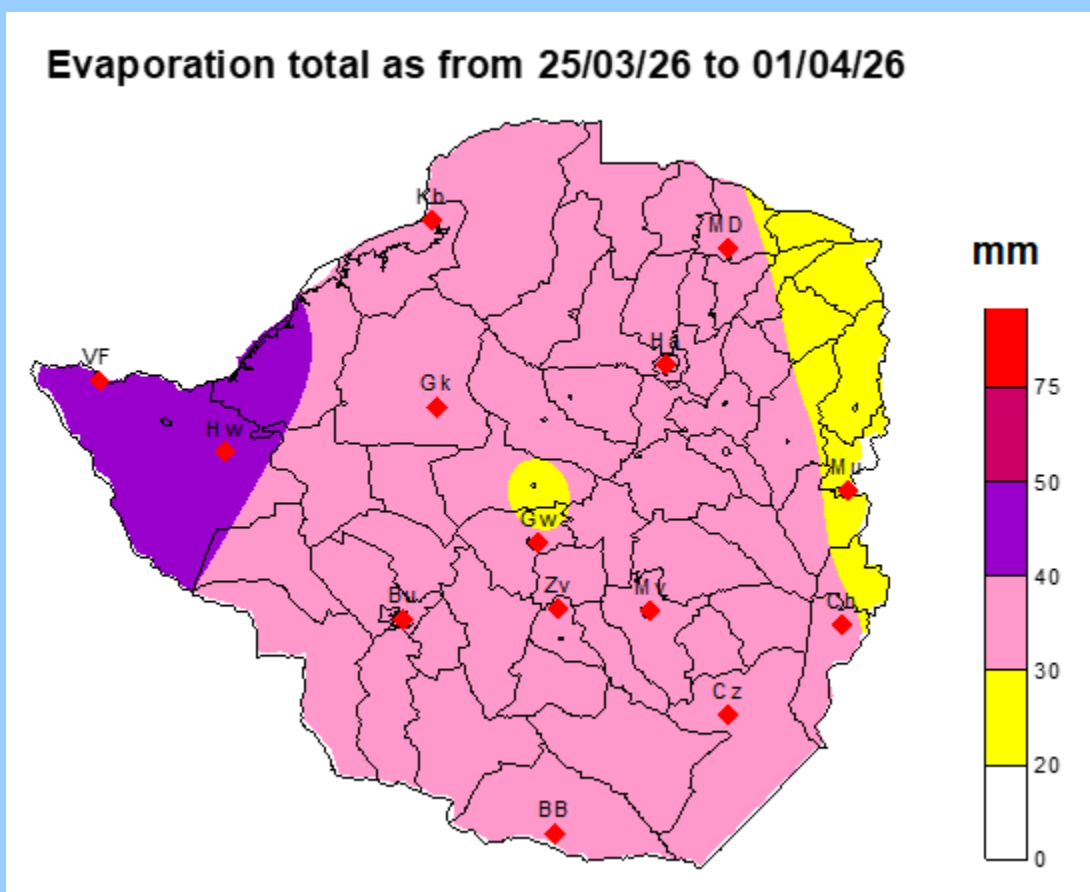


FIGURE 4: WEEKLY EVAPORATION: 25 MARCH - 01 APRIL 2026

During the week ending 01 April 2026, the country’s weekly evaporation pattern showed most regions recording 30–40 mm evaporation rate. Western areas, including Binga, Victoria Falls and Hwange, experienced higher rates of 40–50 mm. By contrast, isolated locations in the east and around Gweru recorded much lower evaporation (at or below 30 mm), attributable to increased rainfall, cloud cover and higher humidity during the period (see Figure 4).

