



WEEKLY RAINFALL BULLETIN

RELEASED: 09 APRIL 2026
SEASON: 2025-2026
VALID: 09 APRIL TO 15 APRIL 2026

WEEKLY RAINFALL

BULLETIN

BULLETIN N°24 of rainfall Season 2025/2026



Contents

Summary of the past week... 2
 Seasonal Accumulated Precipitation...3
 Normal Precipitation Percentage..... 4
 Evaporation... 5
 Weather Outlook for the Week Ending 08-04-2026..... 6

for more information and weather updates follow us on:

X: <https://x.com/MSDZIM>

Facebook: <https://www.facebook.com/Meteorological-Services-Department-of-Zimbabwe-1466334176961651/>

Website: <https://www.weatherzw.org.zw>

 +263778125911

SUMMARY OF PAST WEEK: 01 APRIL 2026 – 08 APRIL 2026

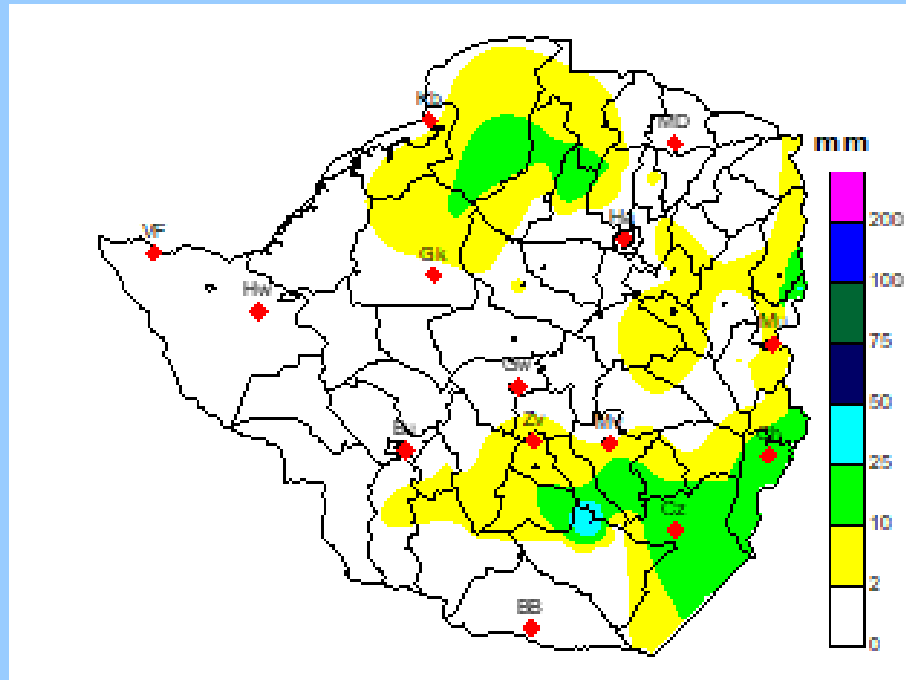


FIGURE 1: WEEKLY RAINFALL TOTALS: 01 APRIL 2026 TO 08 APRIL 2026

Rainfall across Zimbabwe during the reporting period was generally low and unevenly distributed, confined mainly over the northern, eastern and southern regions, marking a continued decline in rainfall activity consistent with the tailing off the rainy season. The season is transitioning towards cessation of the 2025/26 rainy season, with limited rainfall expected to support further crop development outside localized wetter areas.

SEASONAL ACCUMULATED RAINFALL: 01 OCTOBER 2025 – 08 APRIL 2026

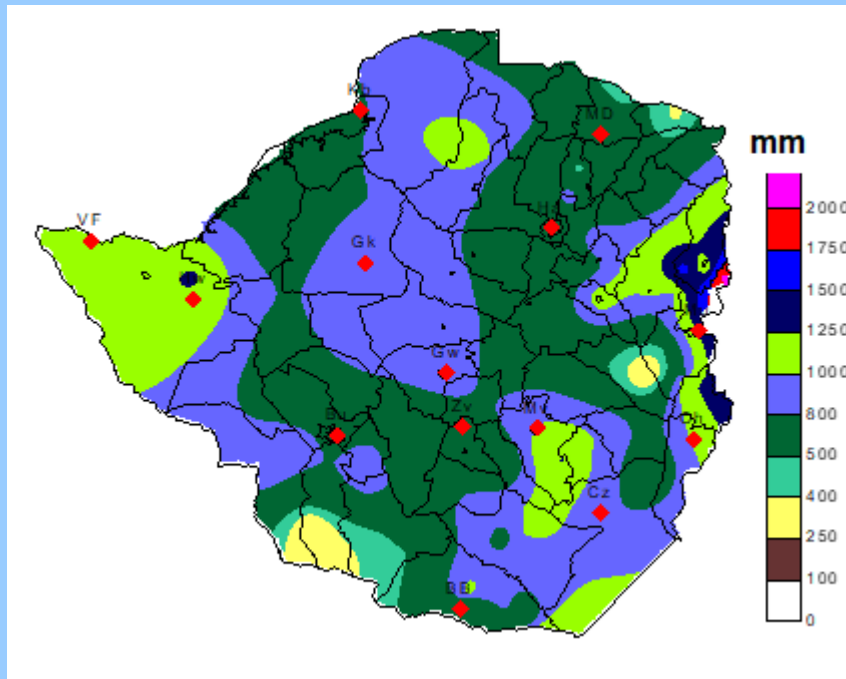


FIGURE 2: SEASONAL RAINFALL TOTALS: 01 OCTOBER 2025 -08 APRIL 2026

From 1 October 2025 to 8 April 2026, seasonal rainfall totals show most of the country has received over 500 mm, except for a few areas in Mashonaland Central, parts of Matabeleland South and, parts of Manicaland. In contrast, extreme parts of Manicaland province, including Mutasa, Mutare, and Chimanimani in have recorded over 1 250 mm.

SEASONAL RAINFALL PERCENTAGE OF NORMAL: 1 OCTOBER 2025 – 08 APRIL 2026

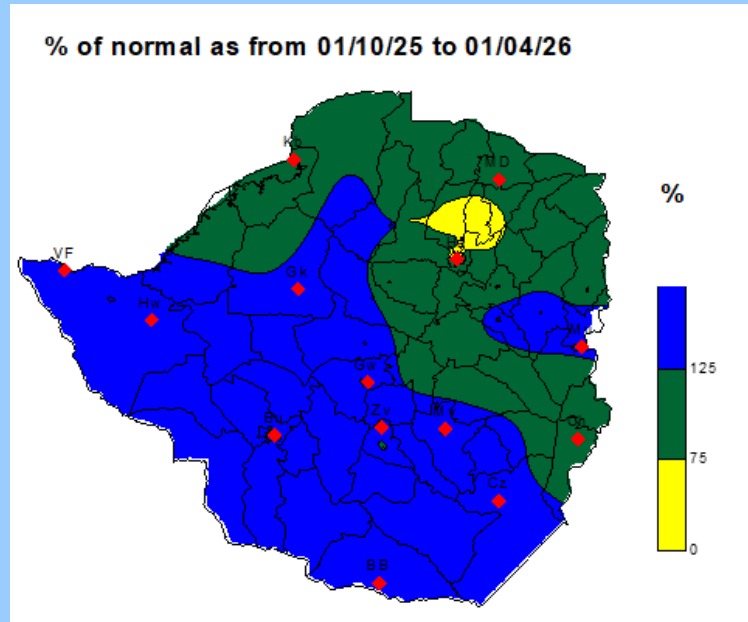


FIGURE 3: ACCUMULATION RAINFALL AS PERCENTAGE OF AVERAGE: 1 OCTOBER 2025-08 APRIL 2026

Percentage of normal rainfall across Zimbabwe for the 2025/26 season to date has been largely normal to above normal, indicating a generally favorable rainfall season with adequate moisture availability in most parts of the country.

- Above-normal rainfall (blue color) has been recorded across southern, southwestern, and southeastern regions, including all Matabeleland provinces, Masvingo, southern Midlands, parts of Manicaland, supporting improved water resources and livestock grazing conditions.
- Near-normal rainfall conditions (green color) prevail across much of Mashonaland West, Mashonaland Central, Midlands, parts of Masvingo as well as parts of Manicaland, suggesting generally stable agricultural conditions.
- Below-normal rainfall (yellow color) has been observed in isolated pockets of Mashonaland East and Mashonaland Central, which may result in localized crop stress and reduced yields.

WEEKLY EVAPORATION 01 APRIL TO 08 APRIL 2026

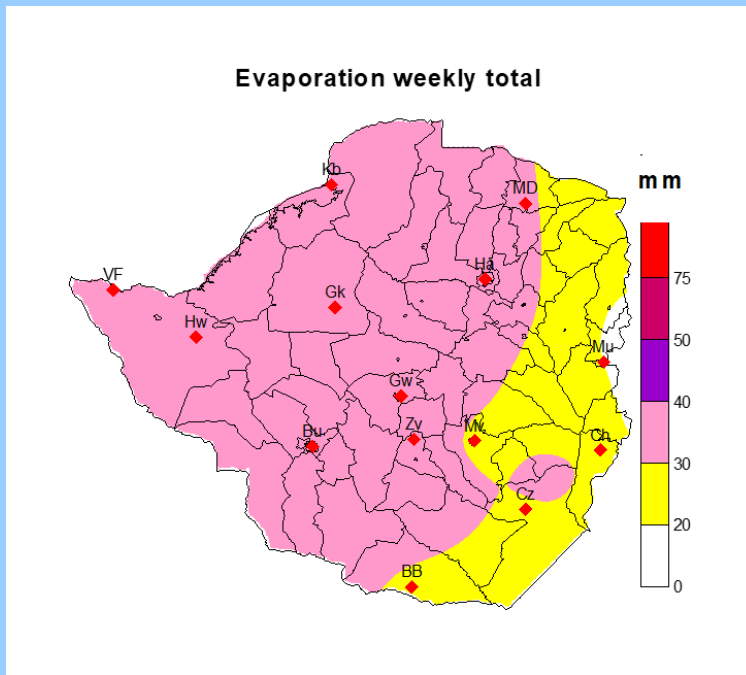


FIGURE 4: WEEKLY EVAPORATION: 01 APRIL - 08 APRIL 2026

The country experienced evaporation rates below 40 mm (Figure 4). The eastern regions recorded lower rates, ranging from 20 to 30 mm, while the rest of the country experienced rates between 30-40mm.

WEATHER OUTLOOK FOR THE PERIOD: 09 – 15 APRIL 2026.

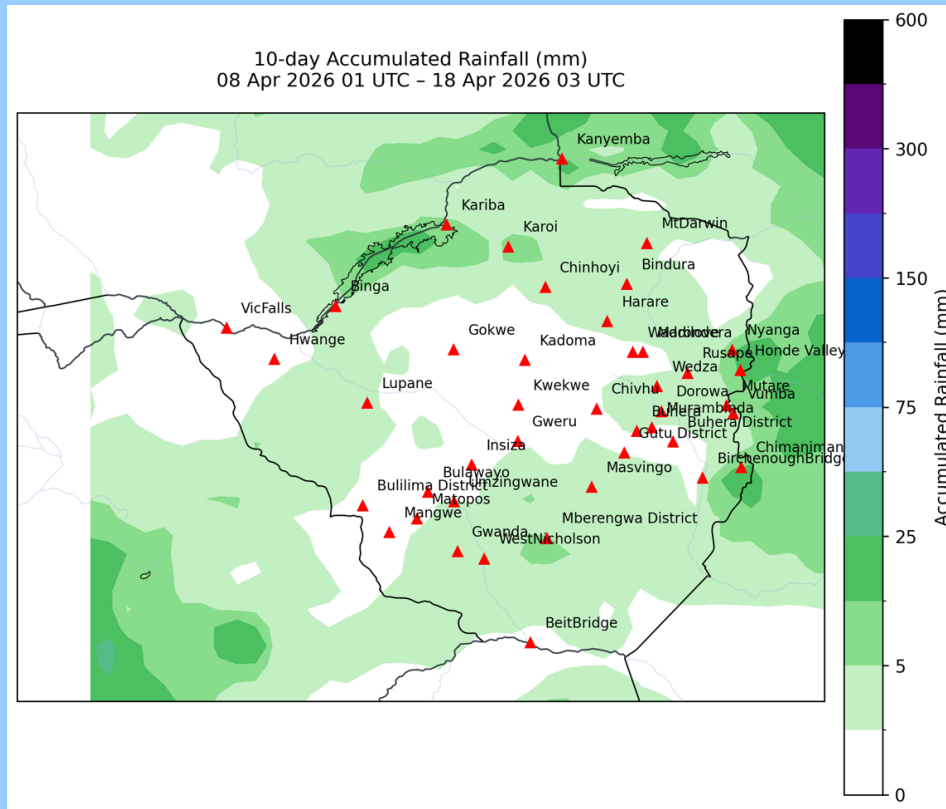


FIGURE 5: ACCUMULATED PRECIPITATION FORECAST: 08 -18 APRIL 2026

Generally sunny and warm conditions should dominate, with isolated light showers possible over the northern and eastern regions.

Warm, sunny days ahead will increase evaporative losses, which may partially offset any rainfall received. Therefore, significant moisture accumulation is not expected.