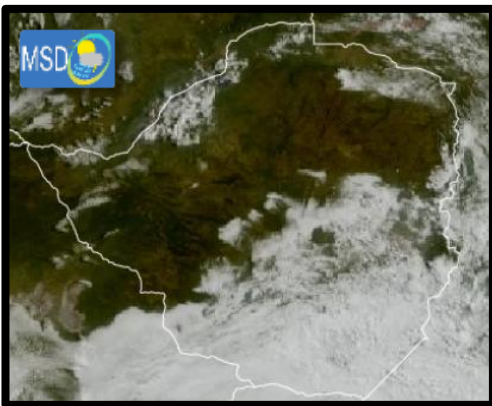




SATELLITE-BASED GLANCE INTO TODAY, WEDNESDAY 29 APRIL 2026.

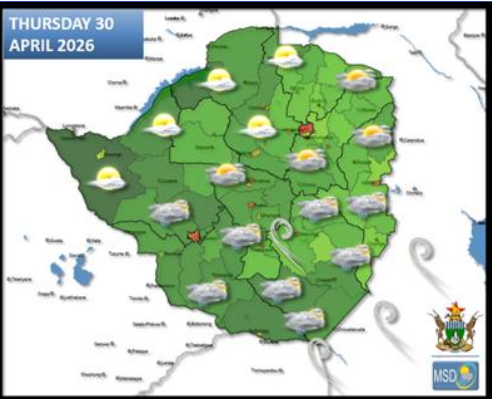


Cloudy, windy, and cool conditions prevailed during the morning over Matabeleland South, the southern parts of Midlands, Masvingo and Manicaland provinces, with some areas experiencing drizzle. Meanwhile, other regions had mostly clear skies and mild conditions.

As the day progressed, it became warm across the country, with partly cloudy conditions over the northern half and mostly cloudy skies in the southern areas.



FORECAST FOR TOMORROW: THURSDAY 30 APRIL 2026



Bulawayo Metropolitan, Matabeleland South, Masvingo, Midlands, Harare Metropolitan, Manicaland, and Mashonaland East provinces.

Mostly cloudy, windy and mild for much of the day with a chance of rain and drizzle in some areas.

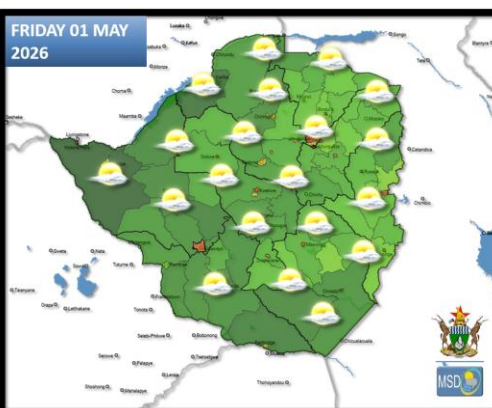
Matabeleland North, Mashonaland West and Central provinces.

Partly cloudy and mild in the morning becoming warm in the afternoon with light winds.

Actions to Take:

- Warm clothing might be required in the morning and evening, especially if outdoors.

WEATHER OUTLOOK FOR: FRIDAY 01 MAY 2026



All Matabeleland, Bulawayo Metropolitan, Masvingo, Midlands, Manicaland, Harare Metropolitan, and all Mashonaland provinces.

Briefly cloudy and mild in the morning becoming warm as the day progresses.

Actions to Take:

- Keep hydrated by drinking adequate amounts of water.
- Warm clothing might be required in the morning and evening, especially if outdoors.



MAIN CITIES FORECAST: THURSDAY 30 APRIL – MONDAY 04 MAY 2026

BINDURA

THU	FRI	SAT	SUN	MON
24°	26°	28°	29°	28°
13°	16°	13°	15°	16°
0.0 mm	0.6 mm	0.7 mm	0.0 mm	0.8 mm

BULAWAYO

THU	FRI	SAT	SUN	MON
25°	28°	29°	28°	27°
15°	13°	15°	17°	16°
0.0 mm	0.5 mm	0.0 mm	0.0 mm	0.0 mm

CHINHOIYI

THU	FRI	SAT	SUN	MON
26°	27°	28°	30°	28°
13°	14°	13°	15°	16°
0.0 mm	nan mm	nan mm	nan mm	nan mm

KADOMA

THU	FRI	SAT	SUN	MON
26°	29°	30°	30°	29°
16°	15°	14°	16°	16°
0.0 mm	0.1 mm	0.1 mm	0.0 mm	0.2 mm

KWEKWE

THU	FRI	SAT	SUN	MON
26°	29°	30°	30°	29°
16°	15°	13°	15°	16°
0.0 mm	0.4 mm	0.4 mm	0.0 mm	0.0 mm

LUPANE

THU	FRI	SAT	SUN	MON
30°	29°	31°	32°	29°
16°	15°	14°	16°	16°
0.0 mm	0.0 mm	0.0 mm	0.0 mm	0.0 mm

GWANDA

THU	FRI	SAT	SUN	MON
25°	30°	30°	30°	30°
17°	16°	18°	19°	17°
0.1 mm	0.6 mm	0.0 mm	0.0 mm	0.0 mm

GWERU

THU	FRI	SAT	SUN	MON
23°	27°	29°	27°	27°
16°	14°	13°	16°	16°
0.0 mm	1.4 mm	0.4 mm	0.0 mm	0.0 mm

HARARE

THU	FRI	SAT	SUN	MON
22°	25°	26°	28°	27°
14°	16°	14°	16°	16°
0.0 mm	0.5 mm	0.1 mm	0.0 mm	0.3 mm

MARONDERA

THU	FRI	SAT	SUN	MON
22°	25°	26°	27°	26°
13°	14°	12°	14°	14°
0.0 mm	0.8 mm	0.4 mm	0.0 mm	0.0 mm

MASVINGO

THU	FRI	SAT	SUN	MON
24°	30°	30°	29°	30°
16°	15°	17°	17°	17°
0.2 mm	0.9 mm	0.0 mm	0.0 mm	0.0 mm

MUTARE

THU	FRI	SAT	SUN	MON
18°	25°	27°	26°	25°
17°	16°	15°	15°	17°
2.2 mm	15.4 mm	0.6 mm	0.0 mm	0.9 mm





HOLIDAY RESORTS FORECAST: THURSDAY 30 APRIL – MONDAY 04 MAY 2026

Location	THU	FRI	SAT	SUN	MON
BINGA	27° 20° 0.0 mm	27° 19° 0.0 mm	29° 19° 0.0 mm	30° 20° 0.0 mm	29° 21° 0.0 mm
GONAREZHOU	24° 18° 0.8 mm	31° 17° 0.2 mm	33° 19° 0.0 mm	32° 19° 0.0 mm	31° 18° 0.0 mm
CHIMANIMANI	17° 15° 2.6 mm	26° 14° 5.9 mm	27° 15° 0.8 mm	27° 15° 0.2 mm	26° 15° 0.2 mm
GREATZIMBABWE	19° 15° 1.0 mm	30° 15° 1.9 mm	29° 17° 0.0 mm	28° 17° 0.0 mm	28° 17° 0.0 mm
CHINHOYICAVES	25° 13° 0.0 mm	27° 13° nan mm	29° 13° nan mm	29° 16° nan mm	28° 16° nan mm
HOTSPRINGS	21° 17° 1.1 mm	30° 16° 2.0 mm	31° 18° 0.0 mm	31° 18° 0.0 mm	31° 18° 0.0 mm
HWANGENATPARK	28° 17° 0.0 mm	28° 16° 0.0 mm	30° 16° 0.0 mm	31° 16° 0.0 mm	30° 18° 0.0 mm
NYANGA	16° 14° 0.8 mm	23° 13° 9.4 mm	24° 12° 1.1 mm	24° 13° 0.0 mm	23° 13° 1.2 mm
KARIBA	31° 19° 0.0 mm	30° 18° 0.0 mm	29° 18° 0.0 mm	30° 20° 0.0 mm	30° 20° 0.4 mm
VICFALLS	29° 16° 0.0 mm	29° 15° 0.0 mm	29° 15° 0.0 mm	30° 17° 0.0 mm	29° 18° 0.0 mm
MATOBO	25° 14° 0.0 mm	28° 15° 0.6 mm	29° 16° 0.0 mm	28° 17° 0.0 mm	28° 16° 0.0 mm
VUMBA	18° 17° 2.2 mm	25° 16° 15.4 mm	27° 15° 0.6 mm	26° 15° 0.0 mm	25° 17° 0.9 mm

