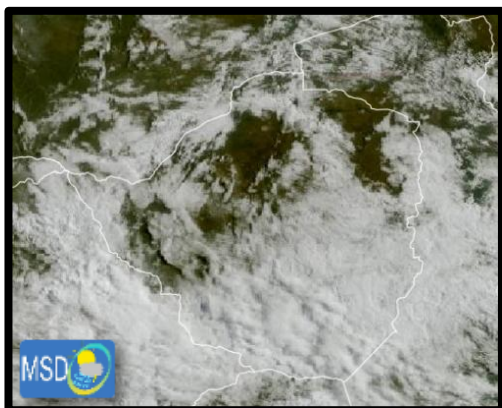




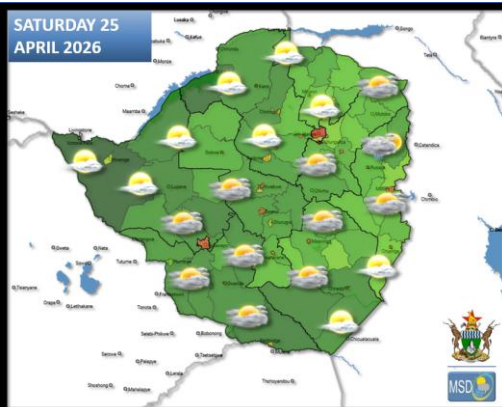
SATELLITE-BASED GLANCE INTO TODAY, FRIDAY 24 APRIL 2026.

Yesterday, rain and drizzle occurred across much of the country, with highest totals of **33 mm in Chipinge** and **17 mm in Mukandi**.

This morning was cloudy and cool, with light rain and drizzle in most areas. As the day progressed, cloudy skies and mild conditions prevailed, while drizzle and rain continued in some parts.



FORECAST FOR TOMORROW: SATURDAY 25 APRIL 2026



Matabeleland South, Bulawayo Metropolitan, Masvingo, Midlands, Manicaland, Harare Metropolitan, Mashonaland East and Central Provinces.

Mostly cloudy and cool in the morning becoming mild in the afternoon. There is a chance of light rain and drizzle in some areas.

Matabeleland North and Mashonaland West Province

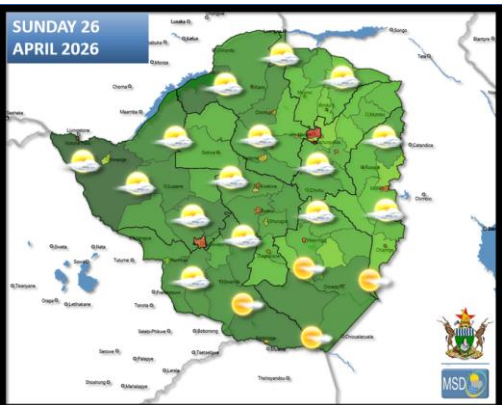
It should start clearing in areas such as Beitbridge, Chipinge, Chiredzi and Buffalo Range as the day progresses.

Mostly clear skies and mild morning conditions becoming partly cloudy and warm in the afternoon.

Actions to Take:

- Warm clothing might be required in the morning and evening, especially if outdoors.

WEATHER OUTLOOK FOR: SUNDAY 26 APRIL 2026



All areas

Mostly clear and mild at first becoming partly cloudy and warm as the day progresses. Isolated showers are probable in some areas.

Actions to Take:

- Keep hydrated by drinking adequate amounts of water.



MAIN CITIES FORECAST: SATURDAY 25 APRIL – WEDNESDAY 29 APRIL 2026

BINDURA



BULAWAYO



CHINHOYI



GWANDA



GWERU



HARARE



KADOMA



KWEKWE



LUPANE



MARONDERA



MASVINGO



MUTARE





HOLIDAY RESORTS FORECAST: SATURDAY 25 APRIL – WEDNESDAY 29 APRIL 2026

BINGA

SAT	SUN	MON	TUE	WED
28°	28°	29°	31°	28°
20°	20°	20°	21°	21°
nan	0.0	0.0	0.0	0.0
mm	mm	mm	mm	mm

CHIMANIMANI

SAT	SUN	MON	TUE	WED
21°	25°	26°	25°	16°
13°	11°	13°	14°	14°
6.4	0.8	0.0	0.0	0.1
mm	mm	mm	mm	mm

CHINHOYICAVES

SAT	SUN	MON	TUE	WED
27°	28°	29°	30°	28°
14°	14°	17°	15°	16°
0.0	0.2	0.0	0.0	0.0
mm	mm	mm	mm	mm

HWANGENATPARK

SAT	SUN	MON	TUE	WED
28°	28°	31°	31°	29°
14°	15°	19°	16°	17°
0.1	0.0	0.0	0.0	0.0
mm	mm	mm	mm	mm

KARIBA

SAT	SUN	MON	TUE	WED
28°	29°	29°	30°	29°
18°	18°	19°	20°	23°
0.0	0.0	0.0	0.0	0.0
mm	mm	mm	mm	mm

MATOBO

SAT	SUN	MON	TUE	WED
23°	27°	27°	27°	20°
13°	13°	15°	16°	14°
0.4	0.1	0.0	0.0	0.0
mm	mm	mm	mm	mm

GONAREZHOU

SAT	SUN	MON	TUE	WED
26°	30°	32°	24°	20°
15°	17°	19°	19°	18°
1.2	0.0	0.0	0.0	0.1
mm	mm	mm	mm	mm

GREATZIMBABWE

SAT	SUN	MON	TUE	WED
19°	25°	27°	26°	18°
15°	13°	15°	16°	16°
5.5	0.3	0.0	0.0	0.0
mm	mm	mm	mm	mm

HOTSPRINGS

SAT	SUN	MON	TUE	WED
24°	27°	29°	30°	21°
16°	14°	16°	17°	17°
2.3	0.2	0.0	0.0	0.0
mm	mm	mm	mm	mm

NYANGA

SAT	SUN	MON	TUE	WED
20°	23°	24°	23°	17°
12°	10°	12°	12°	12°
3.2	4.1	0.0	0.1	0.1
mm	mm	mm	mm	mm

VICFALLS

SAT	SUN	MON	TUE	WED
28°	29°	30°	31°	29°
15°	15°	16°	17°	17°
0.0	0.0	0.0	0.0	0.0
mm	mm	mm	mm	mm

VUMBA

SAT	SUN	MON	TUE	WED
22°	25°	28°	26°	17°
14°	13°	14°	15°	15°
8.2	1.1	0.0	0.0	0.1
mm	mm	mm	mm	mm

