

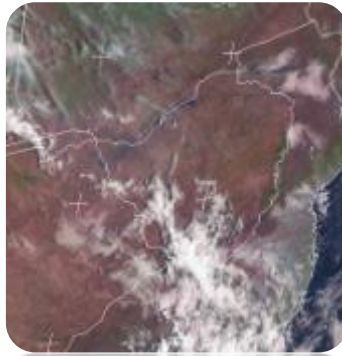


## SATELLITE-BASED GLANCE INTO THIS MORNING, TUESDAY 22 OCTOBER 2024

# WEATHER REPORT & Forecast

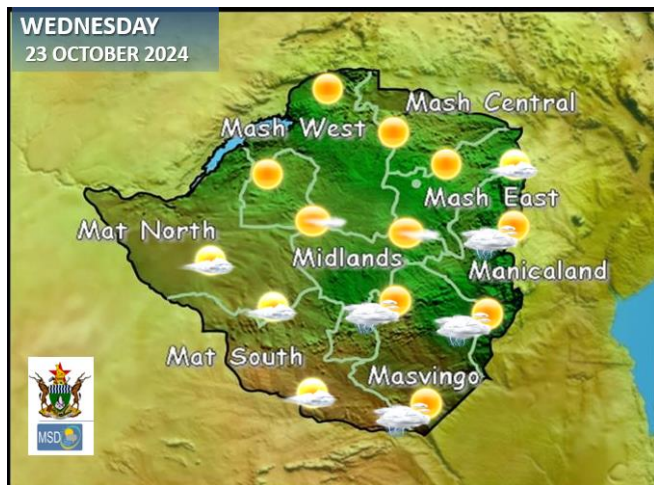


**FIRE SEASON ALERT:**  
DO NOT START ANY OUTDOOR FIRES



There were isolated showers in parts of **Matabeleland South and Bulawayo Metropolitan** yesterday as a cloud band drifted into the western parts of the country. This led to mild morning conditions over much of the country today. It was hot and humid by afternoon, with isolated evening showers in **Bulawayo Metropolitan, parts of Midlands, Matabeleland North and South Provinces.**

## WEATHER FOR TOMORROW: WEDNESDAY 23 OCTOBER 2024



**Morning:** Scattered clouds are expected in **Matabeleland South, Bulawayo Metropolitan, Midlands, and Masvingo Provinces**

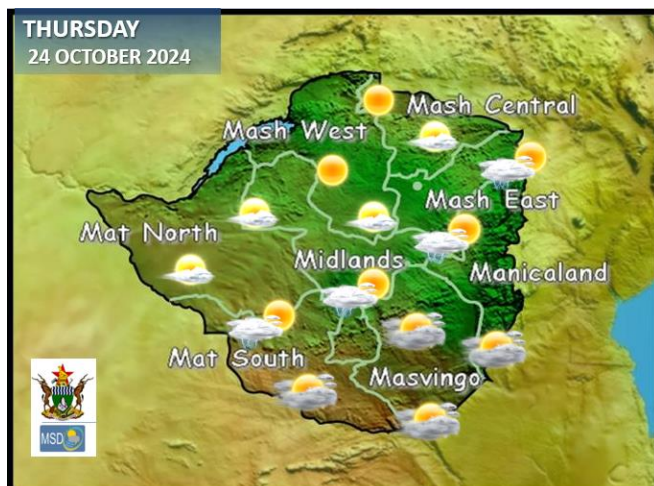
**Afternoon:** Briefly cloudy over **Masvingo, Matabeleland South, Bulawayo Metropolitan, southern Midlands and southern areas of Matabeleland North** the rest of the country will be mostly sunny and hot.

**Overnight:** mild under mostly clear skies

### IMPACTS & ACTIONS TO TAKE

- When thunder roars it is best to be indoors.
- 

## WEATHER OUTLOOK FOR: THURSDAY 24 OCTOBER 2024



**Southern areas:** **Matabeleland South, Masvingo and Manicaland**, cloudy windy and mild for much of the day.

**Main Watershed:** Isolated thundershowers in **Bulawayo Metropolitan, central parts of Midlands, Harare, southern areas of Mashonaland East and Manicaland** with brief cloudy conditions, hot and humid much of the day.

**Northern part:** Clear skies and mild at first, very hot by afternoon.

### IMPACTS & ACTIONS TO TAKE

- Consult your local Agritex officer for advice on farming preparations, including what to plant and the water requirements for specific plant stages.



## 5-DAY FORECAST FOR MAJOR CITIES:

WED 23 OCT – SUN 27 OCT 2024

### BULAWAYO

WED		THU		FRI		SAT		SUN	
33		34		35		36		35	
19		21		20		21		20	
0.0mm		0.0mm		0.0mm		0.0mm		0.0mm	

### CHINHOYI

WED		THU		FRI		SAT		SUN	
34		32		32		35		35	
19		19		17		18		20	
0.0mm		0.2mm		0.0mm		0.0mm		0.0mm	

### GWERU

WED		THU		FRI		SAT		SUN	
31		34		34		34		34	
17		16		16		18		18	
0.4mm		0.5mm		0.0mm		0.0mm		0.0mm	

### KADOMA

WED		THU		FRI		SAT		SUN	
35		34		36		37		37	
19		19		19		20		20	
0.0mm		0.1mm		0.0mm		0.0mm		0.0mm	

### LUPANE

WED		THU		FRI		SAT		SUN	
39		40		40		41		41	
20		21		22		21		22	
0.0mm		0.0mm		0.0mm		0.0mm		0.0mm	

### MASVINGO

WED		THU		FRI		SAT		SUN	
33		34		35		37		37	
19		16		17		19		20	
0.0mm		0.0mm		0.0mm		0.0mm		0.0mm	

### BINDURA

WED		THU		FRI		SAT		SUN	
34		32		35		35		36	
20		19		17		18		20	
0.0mm		0.2mm		0.0mm		0.0mm		0.0mm	

### GWANDA

WED		THU		FRI		SAT		SUN	
37		33		38		39		40	
19		19		18		19		20	
0.0mm		0.0mm		0.0mm		0.0mm		0.0mm	

### HARARE

WED		THU		FRI		SAT		SUN	
32		30		33		33		34	
19		19		17		18		20	
0.0mm		0.2mm		0.0mm		0.0mm		0.0mm	

### KWEKWE

WED		THU		FRI		SAT		SUN	
35		37		36		37		37	
19		20		19		20		20	
0.2mm		0.0mm		0.0mm		0.0mm		0.0mm	

### MARONDERA

WED		THU		FRI		SAT		SUN	
31		28		31		32		33	
15		15		17		18		19	
0.0mm		0.0mm		0.0mm		0.0mm		0.0mm	

### MUTARE

WED		THU		FRI		SAT		SUN	
32		31		33		34		36	
18		17		16		17		18	
0.0mm		0.0mm		0.0mm		0.0mm		0.0mm	



VICTORIA FALLS  
ZIMBABWE



# 5-DAY FORECAST

## FOR HOLIDAY RESORTS:

WED 23 OCT – SUN 27 OCT 2024

### BINGA

WED	THU	FRI	SAT	SUN
41 24 0.0mm	42 25 0.0mm	41 24 0.0mm	42 25 0.0mm	40 25 0.0mm

### CHINHOYI CAVES

WED	THU	FRI	SAT	SUN
34 19 0.0mm	32 19 0.2mm	32 17 0.0mm	35 18 0.0mm	35 20 0.0mm

### CHIREZI/GONAREZHOU NAT. PARK

WED	THU	FRI	SAT	SUN
36 15 0.0mm	38 16 0.0mm	39 18 0.0mm	40 20 0.0mm	37 20 0.0mm

### HWANGE NATIONAL PARK

WED	THU	FRI	SAT	SUN
39 19 0.0mm	39 20 0.0mm	40 20 0.0mm	40 20 0.0mm	38 21 0.0mm

### MATOPOS

WED	THU	FRI	SAT	SUN
34 19 0.0mm	33 21 0.0mm	35 20 0.0mm	36 21 0.0mm	35 20 0.0mm

### VICTORIA FALLS

WED	THU	FRI	SAT	SUN
38 21 0.1mm	39 22 0.0mm	39 22 0.0mm	39 22 0.0mm	38 22 0.0mm

### CHIMANIMANI

WED	THU	FRI	SAT	SUN
27 16 0.1mm	28 16 0.0mm	27 16 0.0mm	30 17 0.0mm	32 17 0.0mm

### GREAT ZIMBABWE

WED	THU	FRI	SAT	SUN
33 19 0.0mm	34 16 0.0mm	35 17 0.0mm	37 19 0.0mm	37 20 0.0mm

### HOT SPRINGS

WED	THU	FRI	SAT	SUN
34 18 0.0mm	31 17 0.0mm	33 16 0.0mm	35 17 0.0mm	37 18 0.0mm

### KARIBA

WED	THU	FRI	SAT	SUN
41 26 0.0mm	41 26 0.0mm	42 26 0.0mm	41 27 0.0mm	41 24 0.0mm

### NYANGA

WED	THU	FRI	SAT	SUN
26 14 0.1mm	25 15 0.0mm	26 15 0.0mm	27 15 0.0mm	29 16 0.0mm

### VUMBA

WED	THU	FRI	SAT	SUN
29 18 0.1mm	29 18 0.0mm	30 16 0.0mm	32 15 0.0mm	33 16 0.0mm