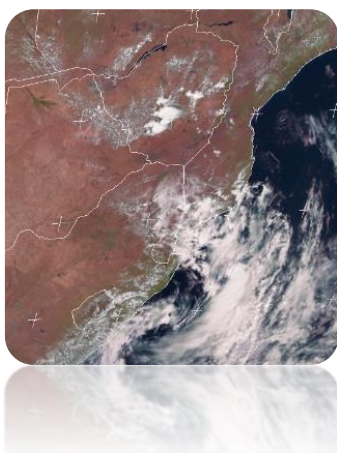




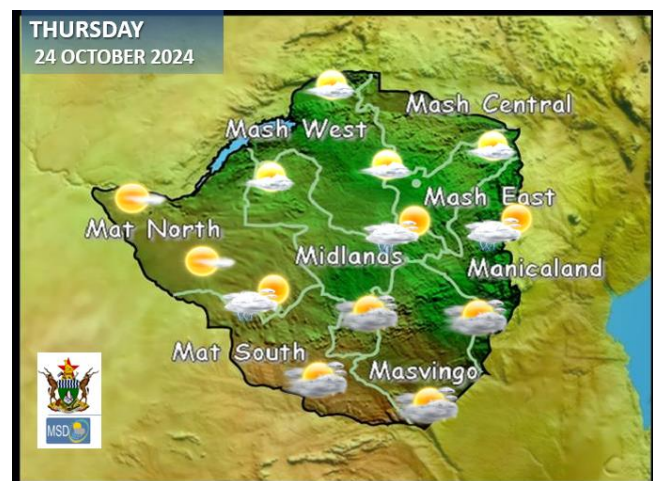
# WEATHER REPORT & Forecast

## WHAT TO DO WHEN THUNDER THREATENS



Yesterday, isolated light showers occurred in **Matabeleland South, Bulawayo Metropolitan, Midlands, Harare Metropolitan, Masvingo, Manicaland, and southern parts of Mashonaland West and East**, with **Harare** receiving the most at **10 mm**. By evening, additional moisture was moving into southern Zimbabwe due to a cool southeast wind. Overall, the day was hot and humid, with isolated showers near and south of the main watershed.

## WEATHER FOR TOMORROW: THURSDAY 24 OCTOBER 2024



**Southern areas:** **Matabeleland South, Masvingo and Manicaland**, cloudy windy and mild for much of the day.

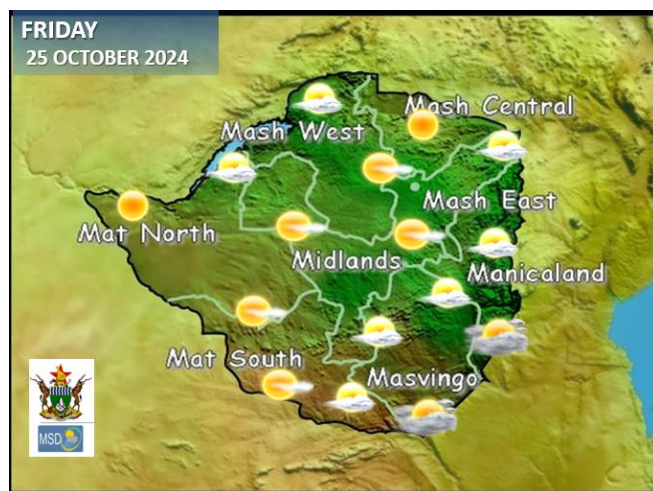
**Main Watershed:** Isolated thundershowers in **Bulawayo Metropolitan, Midlands, Harare Metropolitan, southern areas of Mashonaland East and Manicaland** with brief cloudy conditions, hot and humid much of the day.

**Northern part:** Clear skies and mild at first, very hot by afternoon.

### IMPACTS & ACTIONS TO TAKE

- When thunder roars it is best to be indoors.
- Watch for cooler condition in southern Zimbabwe.

## WEATHER OUTLOOK FOR: FRIDAY 25 OCTOBER 2024



**Morning:** **Masvingo and Manicaland**, mild and cloudy at first becoming less cloudy and warm towards noon. Mostly clear skies and mild in all other areas.

**Afternoon:** Mostly sunny, humid and hot, countrywide.

**Overnight:** Clear skies and mild in all places.

### IMPACTS & ACTIONS TO TAKE

- Consult your local Agritex officer for advice on farming preparations, including what to plant and the water requirements for specific plant stages



## 5-DAY FORECAST FOR MAJOR CITIES:

WED 23 OCT – SUN 27 OCT 2024

### BULAWAYO

THU	FRI	SAT	SUN	MON
34 21  0.2mm	35 20  0.0mm	36 21  0.0mm	35 20  0.0mm	35 20  0.0mm

### CHINHOYI

THU	FRI	SAT	SUN	MON
32 19  0.2mm	32 17  0.0mm	35 18  0.0mm	35 20  0.0mm	35 20  0.0mm

### GWERU

THU	FRI	SAT	SUN	MON
34 16  0.5mm	34 16  0.0mm	34 18  0.0mm	34 18  0.0mm	33 18  0.2mm

### KADOMA

THU	FRI	SAT	SUN	MON
34 19  0.1mm	36 19  0.0mm	37 20  0.0mm	37 20  0.0mm	37 20  0.0mm

### LUPANE

THU	FRI	SAT	SUN	MON
40 21  0.0mm	40 22  0.0mm	41 21  0.0mm	41 22  0.0mm	41 22  0.0mm

### MASVINGO

THU	FRI	SAT	SUN	MON
34 16  0.0mm	35 17  0.0mm	37 19  0.0mm	37 20  0.0mm	37 20  0.0mm

### BINDURA

THU	FRI	SAT	SUN	MON
32 19  0.2mm	35 17  0.0mm	35 18  0.0mm	36 20  0.1mm	36 20  0.2mm

### GWANDA

THU	FRI	SAT	SUN	MON
33 19  0.0mm	38 18  0.0mm	39 19  0.0mm	40 20  0.0mm	40 20  0.2mm

### HARARE

THU	FRI	SAT	SUN	MON
30 19  0.2mm	33 17  0.0mm	33 18  0.0mm	34 20  0.0mm	34 20  0.0mm

### KWEKWE

THU	FRI	SAT	SUN	MON
37 20  0.0mm	36 19  0.0mm	37 20  0.0mm	37 20  0.0mm	37 20  0.0mm

### MARONDERA

THU	FRI	SAT	SUN	MON
28 15  0.0mm	31 17  0.0mm	32 18  0.0mm	33 19  0.0mm	33 19  0.0mm

### MUTARE

THU	FRI	SAT	SUN	MON
31 17  0.0mm	33 16  0.0mm	34 17  0.0mm	36 18  0.0mm	36 18  0.0mm



VICTORIA FALLS  
ZIMBABWE



# 5-DAY FORECAST

## FOR HOLIDAY RESORTS:

WED 23 OCT – SUN 27 OCT 2024

### BINGA

THU	FRI	SAT	SUN	MON
41 24	42 25	41 24	42 25	40 25
0.0mm	0.0mm	0.0mm	0.0mm	0.0mm

### CHINHOYI CAVES

THU	FRI	SAT	SUN	MON
32 19	32 17	35 18	35 20	35 20
0.2mm	0.0mm	0.0mm	0.0mm	0.0mm

### CHIREDDI/GONAREZHOU NAT. PARK

THU	FRI	SAT	SUN	MON
38 16	39 18	40 20	37 20	37 20
0.0mm	0.0mm	0.0mm	0.0mm	0.0mm

### HWANGE NATIONAL PARK

THU	FRI	SAT	SUN	MON
39 19	39 20	40 20	40 20	38 21
0.0mm	0.0mm	0.0mm	0.0mm	0.0mm

### MATOPOS

THU	FRI	SAT	SUN	MON
33 21	35 20	36 21	35 20	35 20
0.0mm	0.0mm	0.0mm	0.0mm	0.0mm

### VICTORIA FALLS

THU	FRI	SAT	SUN	MON
38 21	39 22	39 22	39 22	38 22
0.1mm	0.0mm	0.0mm	0.0mm	0.0mm

### CHIMANIMANI

THU	FRI	SAT	SUN	MON
28 16	27 16	30 17	32 17	32 17
0.0mm	0.0mm	0.0mm	0.0mm	0.0mm

### GREAT ZIMBABWE

THU	FRI	SAT	SUN	MON
34 16	35 17	37 19	37 20	37 20
0.0mm	0.0mm	0.0mm	0.0mm	0.0mm

### HOT SPRINGS

THU	FRI	SAT	SUN	MON
31 17	33 16	35 17	31 17	37 18
0.0mm	0.0mm	0.0mm	0.0mm	0.0mm

### KARIBA

THU	FRI	SAT	SUN	MON
41 26	41 26	42 26	41 27	41 24
0.0mm	0.0mm	0.0mm	0.0mm	0.0mm

### NYANGA

THU	FRI	SAT	SUN	MON
25 15	26 15	27 15	29 16	29 16
0.0mm	0.0mm	0.0mm	0.0mm	0.0mm

### VUMBA

THU	FRI	SAT	SUN	MON
29 18	30 16	32 15	33 16	32 18
0.0mm	0.0mm	0.0mm	0.0mm	0.0mm