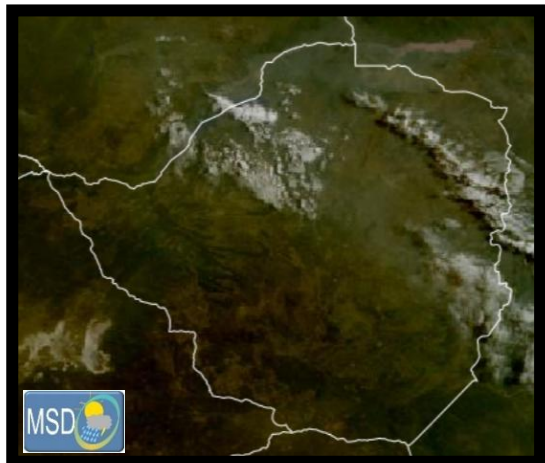


SATELLITE-BASED GLANCE INTO TODAY, WEDNESDAY 13 MAY 2026.

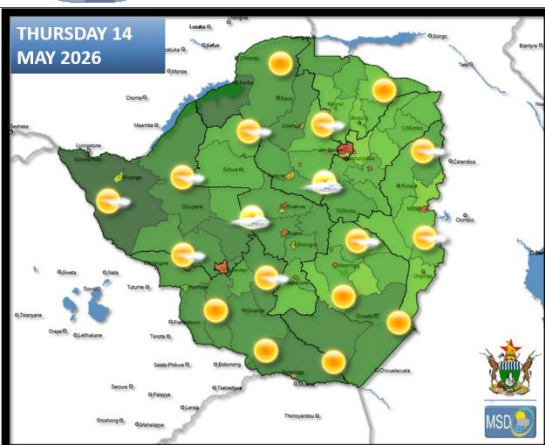


It was cold across much of Matabeleland South this morning, with some of the lowest temperatures in areas such as **Matopos (4°C), Gwanda (5°C), Kezi (6°C), and Lupane (7°C)**; and slight ground frost in Matopos and surrounding areas. The rest of the country experienced cool morning conditions, except areas along the Zambezi and Save valleys, which were mild with partly cloudy conditions in Manicaland and parts of the Mashonaland Provinces. By afternoon, it became mostly sunny and hot in all areas.



DRESS WARMLY | KEEP WARM
 ESPECIALLY IN THE EARLY MORNING HOURS & OVERNIGHT. ENSURE YOUNG CHILDREN, THE ELDERLY, & PERSON'S OF AN ILL DISPOSITION ARE KEPT WARM

FORECAST FOR TOMORROW: THURSDAY 14 MAY 2026



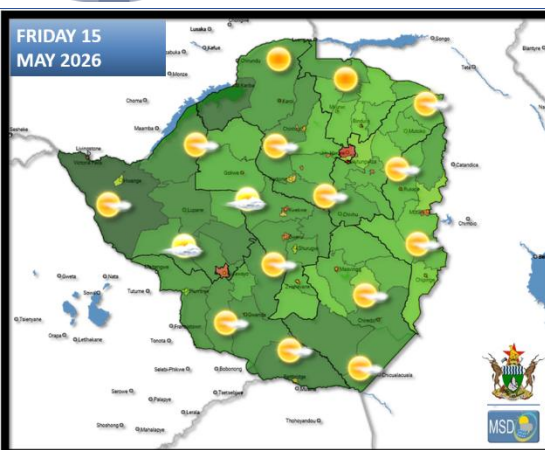
Bulawayo Metropolitan, Matabeleland South and Manicaland provinces: Clear skies and cold conditions at first, with ground frost in areas such as Matopos, Kezi and Gwanda. Warm by afternoon becoming cool towards evening.

Matabeleland North, Midlands, Harare Metropolitan, Masvingo provinces and all Mashonaland provinces: Mostly clear skies and cool morning conditions, though mild over the Zambezi and Save valleys. Partly cloudy and warm by the afternoon, becoming cool towards evening.

Actions to Take:

- Warm clothing might be required in the morning and evening, especially if outdoors.
- If a brazier or fire is used indoors to keep warm, ensure the room is well ventilated.
- Keep hydrated during the day.

WEATHER OUTLOOK FOR: FRIDAY 15 MAY 2026



Matabeleland North, Midlands, Bulawayo Metropolitan, and Matabeleland South provinces: Partly cloudy and cool in the morning, becoming warm as the day progresses. Cool towards evening

Harare Metropolitan, Masvingo, Manicaland and all Mashonaland provinces: Mostly sunny and warm conditions for much of the day, though cool at first and towards evening.

Actions to Take:

- Ensure the young and elderly are kept warm in the early morning hours and toward evening.
- Keep hydrated during the day.



MAIN CITIES FORECAST: THURSDAY 14 – MONDAY 18 MAY 2026

BINDURA

	THU	FRI	SAT	SUN	MON
29°	27°	27°	26°	26°	
14° 10°	12° 8°	12° 8°	11° 7°	12° 9°	

BULAWAYO

	THU	FRI	SAT	SUN	MON
26°	25°	24°	22°	23°	
14° 10°	14° 11°	13° 9°	13° 9°	10° 7°	

CHINHOYI

	THU	FRI	SAT	SUN	MON
30°	28°	28°	28°	26°	
15° 12°	14° 10°	12° 9°	12° 8°	12° 9°	

KADOMA

	THU	FRI	SAT	SUN	MON
30°	28°	28°	25°	27°	
16° 12°	14° 10°	13° 9°	13° 9°	15° 11°	

KWEKWE

	THU	FRI	SAT	SUN	MON
30°	28°	27°	26°	27°	
15° 11°	14° 11°	12° 9°	14° 10°	10° 7°	

LUPANE

	THU	FRI	SAT	SUN	MON
31°	29°	29°	27°	28°	
13° 9°	15° 12°	15° 12°	13° 10°	12° 9°	

GWANDA

	THU	FRI	SAT	SUN	MON
27°	26°	26°	23°	24°	
14° 10°	14° 10°	14° 11°	14° 11°	12° 9°	

GWERU

	THU	FRI	SAT	SUN	MON
26°	25°	24°	21°	23°	
14° 10°	13° 9°	11° 8°	12° 8°	9° 6°	

HARARE

	THU	FRI	SAT	SUN	MON
28°	25°	25°	23°	24°	
16° 12°	14° 10°	13° 10°	13° 9°	13° 9°	

MARONDERA

	THU	FRI	SAT	SUN	MON
26°	25°	23°	19°	22°	
13° 9°	10° 7°	9° 6°	9° 6°	11° 8°	

MASVINGO

	THU	FRI	SAT	SUN	MON
27°	27°	25°	20°	24°	
15° 12°	13° 10°	13° 9°	12° 9°	11° 8°	

MUTARE

	THU	FRI	SAT	SUN	MON
26°	24°	23°	20°	21°	
14° 11°	13° 9°	13° 9°	14° 10°	14° 11°	





HOLIDAY RESORTS FORECAST: THURSDAY 14 – MONDAY 18 MAY 2026

BINGA

THU	FRI	SAT	SUN	MON
29°	28°	28°	28°	27°
18° 14°	19° 16°	18° 15°	18° 14°	18° 15°

CHIMANIMANI

THU	FRI	SAT	SUN	MON
26°	23°	23°	20°	22°
13° 10°	11° 8°	10° 7°	13° 9°	12° 9°

CHINHOYICAVES

THU	FRI	SAT	SUN	MON
30°	28°	28°	27°	27°
16° 12°	14° 10°	13° 9°	12° 9°	13° 9°

HWANGENATPARK

THU	FRI	SAT	SUN	MON
30°	30°	29°	27°	28°
12° 9°	15° 12°	13° 10°	14° 11°	12° 9°

KARIBA

THU	FRI	SAT	SUN	MON
30°	30°	28°	28°	27°
20° 16°	18° 15°	18° 15°	18° 14°	19° 15°

MATOBO

THU	FRI	SAT	SUN	MON
26°	25°	24°	22°	23°
13° 9°	13° 9°	12° 9°	11° 8°	10° 6°

GONAREZHOU

THU	FRI	SAT	SUN	MON
29°	29°	27°	22°	24°
16° 13°	16° 13°	17° 13°	16° 12°	15° 11°

GREATZIMBABWE

THU	FRI	SAT	SUN	MON
26°	25°	25°	20°	23°
16° 12°	12° 9°	13° 9°	13° 9°	12° 8°

HOTSPRINGS

THU	FRI	SAT	SUN	MON
28°	28°	26°	23°	25°
18° 14°	14° 11°	13° 10°	15° 11°	16° 13°

NYANGA

THU	FRI	SAT	SUN	MON
23°	21°	20°	17°	19°
10° 7°	9° 5°	9° 6°	11° 7°	10° 6°

VICFALLS

THU	FRI	SAT	SUN	MON
30°	30°	29°	28°	28°
14° 10°	16° 12°	15° 11°	15° 12°	14° 11°

VUMBA

THU	FRI	SAT	SUN	MON
26°	24°	23°	20°	21°
14° 11°	13° 9°	13° 9°	14° 10°	14° 11°

