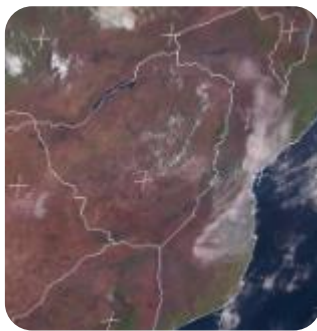




## SATELLITE-BASED GLANCE INTO THIS MORNING, FRIDAY 25 OCTOBER 2024

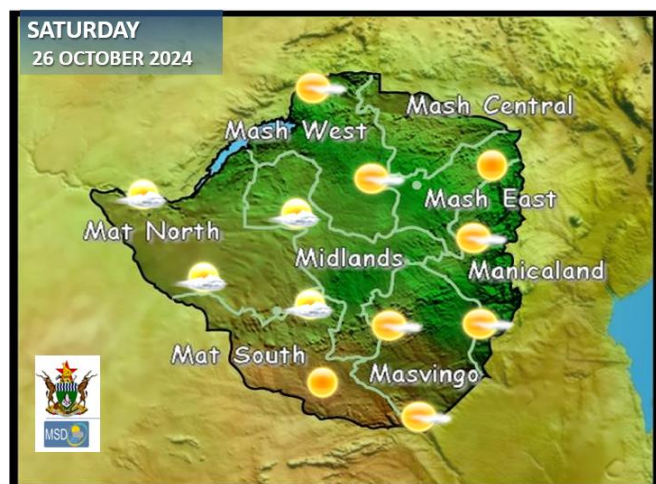
# WEATHER REPORT & Forecast

### WHAT TO DO WHEN THUNDER THREATENS



The moisture in areas along the central watershed resulted in isolated thundershowers with notable rainfall amounts recorded in **Wedza(8mm)** and **Nyanga(44mm)**. This morning, it was briefly cloudy and mild over much of **Manicaland** provinces and **Mashonaland Central** with clear skies in the remainder of the country. By the afternoon all areas became mostly sunny and hot.

## WEATHER FOR TOMORROW: SATURDAY 26 OCTOBER 2024



**Morning:** Brief clouds over **Matabeleland North and the Midlands** provinces. The remainder of the country should be under clear skies and mild conditions.

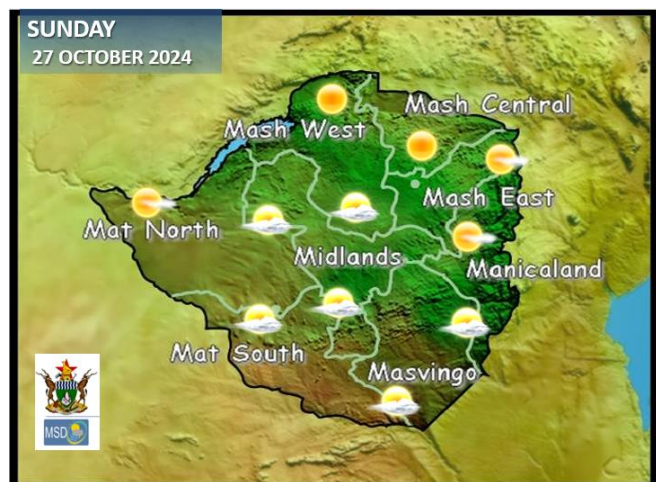
**Afternoon:** Partly cloudy conditions are expected in the western regions of the country, with a chance of isolated thundershowers. In other areas, it will be mostly sunny and hot.

**Overnight:** Clear skies and mild in all areas.

### IMPACTS & ACTIONS TO TAKE

- When thunder roars it is best to be indoors.
- Watch for cooler conditions in southern Zimbabwe.

## WEATHER OUTLOOK FOR: SUNDAY 27 OCTOBER 2024



**Morning:** Clear skies and mild in all areas.

**Afternoon:** Expect partly cloudy conditions across all **Matabeleland Provinces, Bulawayo Metropolitan, Masvingo, and the western parts of the Midlands**. The other areas are likely to be mostly sunny and warm.

**Overnight:** Cloudy conditions over much of the country with a chance of thundershowers towards dawn.

### IMPACTS & ACTIONS TO TAKE

- Consult your local Agritex officer for advice on farming preparations, including what to plant and the water requirements for specific plant stages



## 5-DAY FORECAST FOR MAJOR CITIES:

SAT 26 OCT – WED 30 OCT 2024

### BULAWAYO

SAT	SUN	MON	TUE	WED
34 19  0.0mm	35 19  0.0mm	33 18  0.0mm	32 17  0.0mm	31 16  0.0mm

### CHINHOYI

SAT	SUN	MON	TUE	WED
37 18  0.0mm	37 19  0.0mm	36 20  0.0mm	35 19  0.0mm	34 18  0.0mm

### GWERU

SAT	SUN	MON	TUE	WED
34 18  0.0mm	35 18  0.0mm	34 17  0.0mm	31 17  0.2mm	33 18  0.2mm

### KADOMA

SAT	SUN	MON	TUE	WED
37 19  0.0mm	37 20  0.0mm	36 22  0.1mm	35 21  0.1mm	37 20  0.0mm

### LUPANE

SAT	SUN	MON	TUE	WED
40 22  0.0mm	37 21  0.0mm	38 20  0.0mm	37 19  0.0mm	36 19  0.0mm

### MASVINGO

SAT	SUN	MON	TUE	WED
38 20  0.0mm	37 19  0.0mm	36 20  0.0mm	35 19  0.0mm	34 18  0.0mm

### BINDURA

SAT	SUN	MON	TUE	WED
36 17  0.0mm	34 18  0.0mm	35 17  0.1mm	33 16  0.2mm	32 15  0.2mm

### GWANDA

SAT	SUN	MON	TUE	WED
38 20  0.0mm	40 19  0.0mm	38 19  0.0mm	37 18  0.2mm	35 18  0.2mm

### HARARE

SAT	SUN	MON	TUE	WED
33 21  0.0mm	35 20  0.0mm	33 21  0.0mm	35 21  0.0mm	32 19  0.0mm

### KWEKWE

SAT	SUN	MON	TUE	WED
35 18  0.0mm	36 18  0.0mm	36 20  0.0mm	33 18  0.0mm	35 17  0.0mm

### MARONDERA

SAT	SUN	MON	TUE	WED
33 17  0.0mm	34 17  0.0mm	33 18  0.0mm	32 17  0.0mm	30 17  0.0mm

### MUTARE

SAT	SUN	MON	TUE	WED
36 18  0.0mm	35 17  0.0mm	34 17  0.0mm	31 16  0.0mm	32 16  0.0mm



VICTORIA FALLS  
ZIMBABWE



# 5-DAY FORECAST

## FOR HOLIDAY RESORTS:

SAT 26 OCT – WED 30 OCT 2024

### BINGA

SAT	SUN	MON	TUE	WED
42 29 0.0mm	43 27 0.0mm	37 25 0.0mm	36 25 0.0mm	36 24 0.0mm

### CHINHOYI CAVES

SAT	SUN	MON	TUE	WED
37 18 0.0mm	37 19 0.0mm	36 20 0.0mm	35 19 0.0mm	34 18 0.0mm

### CHIREDDI/GONAREZHOU NAT. PARK

SAT	SUN	MON	TUE	WED
38 21 0.0mm	40 20 0.0mm	37 19 0.0mm	36 19 0.0mm	36 19 0.0mm

### HWANGE NATIONAL PARK

SAT	SUN	MON	TUE	WED
38 22 0.0mm	39 21 0.0mm	39 22 0.0mm	35 21 0.0mm	38 20 0.0mm

### MATOPOS

SAT	SUN	MON	TUE	WED
35 19 0.0mm	36 18 0.0mm	33 19 0.0mm	33 18 0.0mm	34 17 0.0mm

### VICTORIA FALLS

SAT	SUN	MON	TUE	WED
39 23 0.0mm	36 23 0.0mm	37 21 0.0mm	35 21 0.0mm	34 20 0.0mm

### CHIMANIMANI

SAT	SUN	MON	TUE	WED
31 18 0.0mm	28 17 0.0mm	30 17 0.0mm	28 17 0.0mm	29 17 0.0mm

### GREAT ZIMBABWE

SAT	SUN	MON	TUE	WED
37 20 0.0mm	38 19 0.0mm	36 20 0.0mm	35 19 0.0mm	34 18 0.0mm

### HOT SPRINGS

SAT	SUN	MON	TUE	WED
37 18 0.0mm	38 19 0.0mm	37 18 0.0mm	34 18 0.0mm	33 18 0.0mm

### KARIBA

SAT	SUN	MON	TUE	WED
42 26 0.0mm	42 26 0.0mm	41 27 0.0mm	40 24 0.0mm	39 24 0.0mm

### NYANGA

SAT	SUN	MON	TUE	WED
27 16 0.0mm	28 17 0.0mm	26 16 0.0mm	25 16 0.0mm	25 16 0.0mm

### VUMBA

SAT	SUN	MON	TUE	WED
31 17 0.0mm	33 18 0.0mm	33 17 0.0mm	31 18 0.0mm	30 18 0.0mm