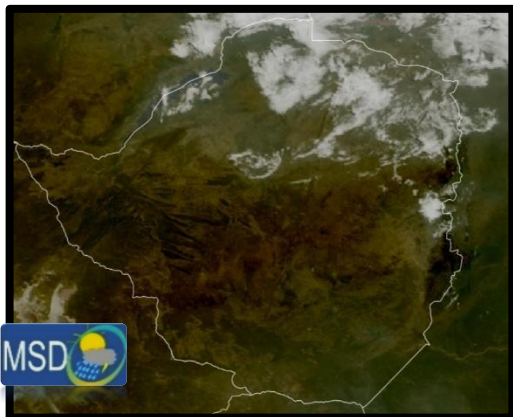




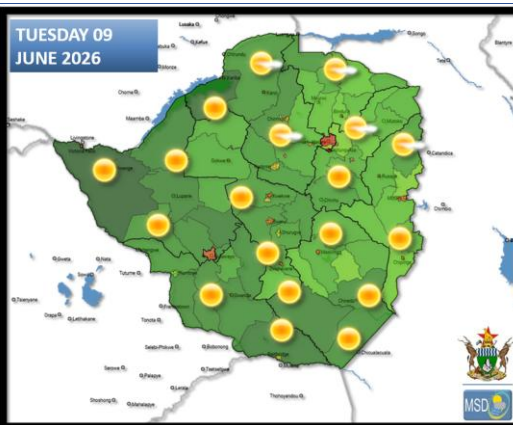
SATELLITE-BASED GLANCE INTO TODAY, MONDAY 08 JUNE 2026



The residual moisture over parts of Mashonaland Central and East, as well as the northern regions of Manicaland, contributed to isolated thundershowers in Guruve, Mutoko, and Nyanga yesterday.

As of today, the northern and eastern parts of the country experienced partly cloudy and cool conditions in the morning, while the remaining areas had clear skies and cooler temperatures. However, localized areas experienced very cold conditions, resulting in slight ground frost in the following districts: **Matopos (0°C), Chivhu (0°C), Chisumbanje (1°C), Chipinge (1°C), Gweru (1°C), Nyanga (1°C), Kezi (2°C), Gwanda (2°C), Plumtree (2°C), Masvingo (2°C), Wedza (2°C), and Nkayi (2°C).** In the afternoon, mostly sunny and mild conditions were experienced in all areas.

FORECAST FOR TOMORROW: TUESDAY 09 JUNE 2026



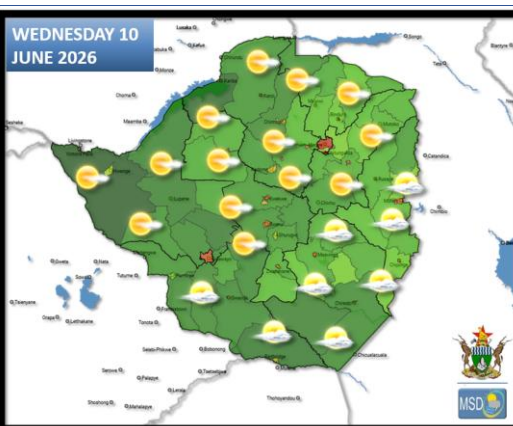
All areas:

Clear skies and cold conditions are expected countrywide with a chance of slight to moderate ground frost in frost prone areas such as Lupane, Gwanda, Chivhu, Makoholi, Matopos, Gweru and Mazowe. Mostly sunny and warm conditions are anticipated in the afternoon becoming cold overnight.

Actions to Take:

- Ensure the young and elderly are kept warm especially in the morning and overnight.
- Implement frost prevention measures where necessary, with advice from Agritex Officer
- Monitor temperature within fowl runs and adjust accordingly, with advice from your local ABAO.

WEATHER OUTLOOK FOR: WEDNESDAY 10 JUNE 2026



Matabeleland South, Masvingo and Manicaland provinces:

Partly cloudy and cold conditions in the morning becoming mild in the afternoon. Cold conditions overnight.

Matabeleland North, Bulawayo Metropolitan, Midlands, Harare Metropolitan, and all Mashonaland provinces:

Clear skies and cold conditions in the morning becoming sunny and warm in the afternoon. Cold conditions overnight.

Actions to Take:

- Monitor temperature within fowl runs and adjust accordingly, with advice from your local ABAO.
- Implement frost prevention measures where necessary, with advice from Agritex Officer



MAIN CITIES FORECAST: TUESDAY 09 JUNE – SATURDAY 13 JUNE 2026

BINDURA

TUE	WED	THU	FRI	SAT
28°	26°	25°	26°	26°
10°	10°	9°	9°	9°
6.4°	6.5°	5.1°	5.3°	5.8°

CHINHOYI

TUE	WED	THU	FRI	SAT
29°	28°	28°	28°	27°
11°	12°	10°	10°	11°
7.6°	8.2°	6.4°	6.7°	7.5°

GWERU

TUE	WED	THU	FRI	SAT
27°	25°	24°	26°	26°
10°	11°	9°	10°	10°
6.3°	7.2°	5.5°	6.1°	7.0°

BULAWAYO

TUE	WED	THU	FRI	SAT
28°	26°	24°	26°	26°
12°	11°	10°	11°	12°
8.1°	7.7°	6.9°	7.4°	8.4°

GWANDA

TUE	WED	THU	FRI	SAT
28°	25°	25°	27°	27°
11°	11°	11°	12°	13°
7.9°	7.6°	7.3°	8.2°	9.2°

HARARE

TUE	WED	THU	FRI	SAT
25°	25°	24°	24°	24°
12°	12°	10°	11°	12°
8.1°	8.8°	7.0°	8.0°	8.7°

KADOMA

TUE	WED	THU	FRI	SAT
28°	29°	28°	28°	28°
10°	12°	11°	11°	12°
6.2°	8.2°	7.1°	7.6°	8.3°

LUPANE

TUE	WED	THU	FRI	SAT
30°	30°	29°	30°	29°
8°	10°	9°	10°	10°
4.8°	6.3°	5.9°	6.5°	6.7°

MASVINGO

TUE	WED	THU	FRI	SAT
27°	25°	26°	26°	27°
10°	11°	10°	11°	12°
6.8°	7.6°	6.7°	7.7°	8.5°

KWEKWE

TUE	WED	THU	FRI	SAT
28°	28°	27°	28°	28°
9°	10°	9°	9°	9°
5.4°	6.5°	6.0°	5.9°	5.9°

MARONDERA

TUE	WED	THU	FRI	SAT
24°	24°	23°	23°	25°
9°	9°	8°	9°	9°
5.0°	5.7°	4.2°	5.2°	5.2°

MUTARE

TUE	WED	THU	FRI	SAT
26°	22°	22°	25°	24°
10°	10°	10°	10°	10°
6.5°	6.1°	6.4°	6.2°	6.5°



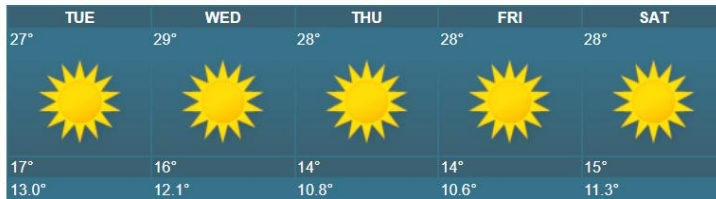


HOLIDAY RESORTS FORECAST: TUESDAY 09 JUNE – SATURDAY 13 JUNE 2026

BINGA



KARIBA



CHINHOYICAVES



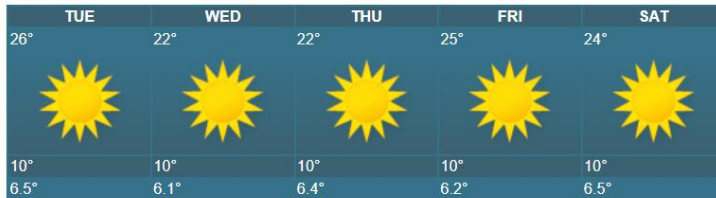
NYANGA



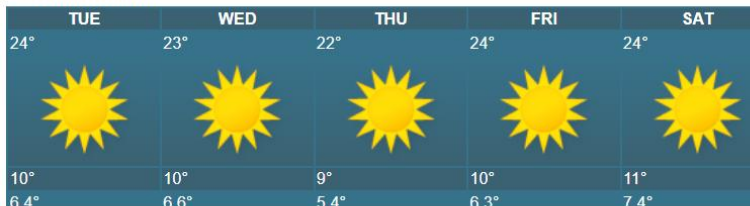
GREATZIMBABWE



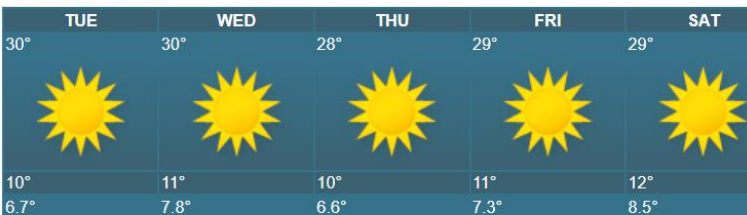
VUMBA



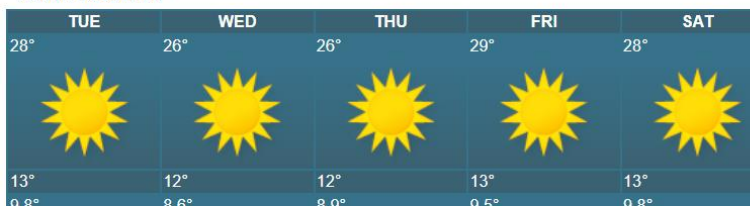
CHIMANIMANI



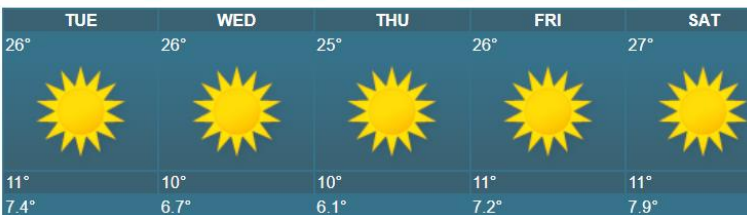
HWANGENATPARK



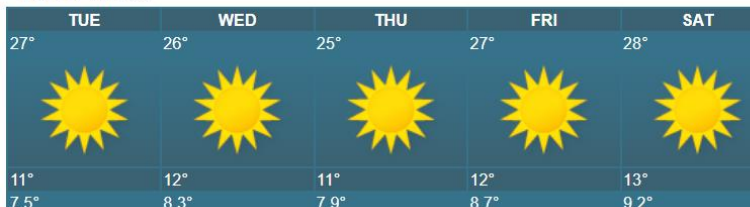
GONAREZHOU



MATOBO



HOTSPRINGS



VICFALLS

