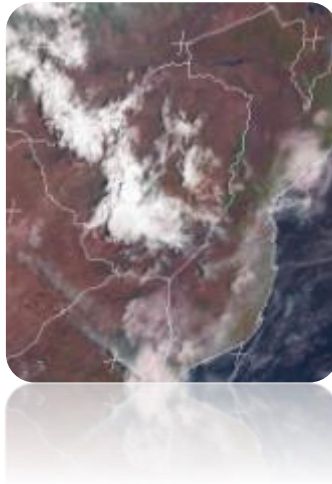




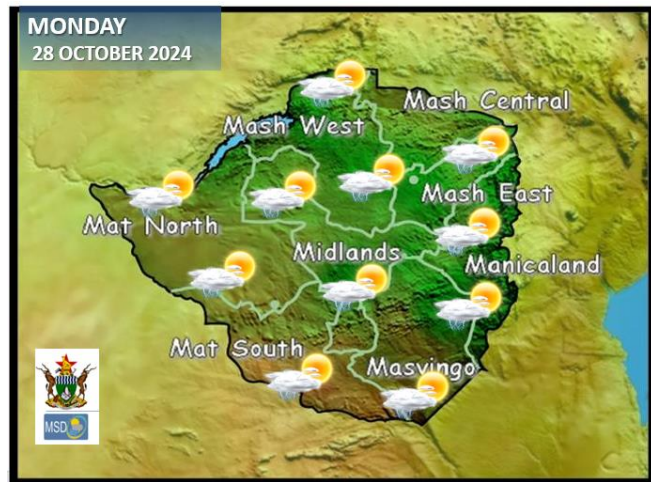
## WEATHER REPORT & Forecast

### WHAT TO DO WHEN THUNDER THREATENS



The presence of moisture across the country led to widespread thundershowers in **all Matabeleland provinces, Bulawayo Metropolitan, the Midlands, Harare Metropolitan, and all Mashonaland provinces**. Notable rainfall was recorded in several areas: **Gweru** received 13 mm, **Mhondoro (9 mm)**, while both **Plumtree and Chinhoyi** each received 8 mm. Throughout the day, it was partly cloudy and warm, accompanied by scattered thundershowers.

## WEATHER FOR TOMORROW: MONDAY 28 OCTOBER 2024

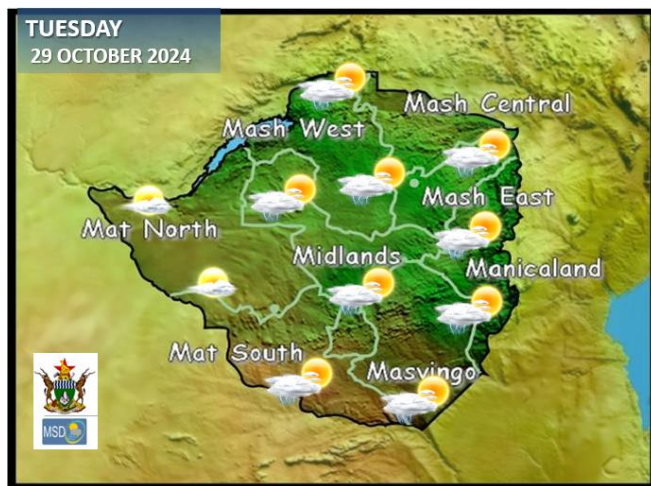


- Morning:** Anticipate partly cloudy, windy and mild conditions in all areas with a chance of light showers.
- Afternoon:** Expect cloudy, warm and windy conditions with widespread thundershowers. Heavy rainfall with hail is probable in areas along the main watershed.
- Overnight:** Partly cloudy and mild in all areas with a chance of light rain and showers towards dawn.

### IMPACTS & ACTIONS TO TAKE

- **When thunder roars it is best to be indoors.**
- **Hailstones remain probable, be alert.**

## WEATHER OUTLOOK FOR: TUESDAY 29 OCTOBER 2024



- Morning:** It should be partly cloudy and mild over **much of the country** with brief clouds and mild conditions over all **Matabeleland provinces**.
- Afternoon:** Cloudy, windy and warm conditions in **all areas** with widespread thundershowers. Hailstones remain probable over **the northern and eastern** regions of the country.
- Overnight:** Cloudy and mild conditions with a slight chance of intermittent rain.

### IMPACTS & ACTIONS TO TAKE

- **High temperature increases the occurrence of hail, please be on alert.**



## 5-DAY FORECAST FOR MAJOR CITIES:

MON 28 OCT – FRI 01 NOV 2024

### BULAWAYO

MON	TUE	WED	THUR	FRI
32 17	33 16	32 17	31 18	31 19
5.0mm	15.0mm	0.0mm	0.0mm	0.0mm

### CHINHOYI

MON	TUE	WED	THUR	FRI
34 18	33 19	31 20	32 22	34 20
5.0mm	10. mm	0.2mm	0.5mm	0.5mm

### GWERU

MON	TUE	WED	THUR	FRI
28 18	29 17	30 18	29 18	29 17
5.0mm	10. mm	0.2mm	0.5mm	0.5mm

### KADOMA

MON	TUE	WED	THUR	FRI
31 19	32 20	33 21	33 21	32 22
5.0mm	10. mm	0.2mm	0.5mm	0.5mm

### LUPANE

MON	TUE	WED	THUR	FRI
39 21	38 21	36 20	35 19	33 19
5.0mm	10. mm	0.2mm	0.5mm	0.5mm

### MASVINGO

MON	TUE	WED	THUR	FRI
34 21	33 21	32 20	33 21	34 20
5.0mm	10. mm	0.2mm	0.5mm	0.5mm

### BINDURA

MON	TUE	WED	THUR	FRI
34 20	34 19	32 21	31 20	30 21
5.0mm	10.0mm	0.1mm	0.2mm	0.2mm

### GWANDA

MON	TUE	WED	THUR	FRI
39 22	40 22	38 21	36 21	3 20
5.0mm	10.0mm	0.1mm	0.2mm	0.2mm

### HARARE

MON	TUE	WED	THUR	FRI
31 19	32 19	29 18	30 18	29 18
5.0mm	10.0mm	0.1mm	0.2mm	0.2mm

### KWEKWE

MON	TUE	WED	THUR	FRI
32 18	33 19	33 19	30 20	30 20
5.0mm	10.0mm	0.1mm	0.2mm	0.2mm

### MARONDERA

MON	TUE	WED	THUR	FRI
30 13	29 13	28 14	27 15	29 17
5.0mm	10.0mm	0.1mm	0.2mm	0.2mm

### MUTARE

MON	TUE	WED	THUR	FRI
32 18	30 18	29 19	28 19	29 18
5.0mm	10.0mm	0.1mm	0.2mm	0.2mm



VICTORIA FALLS  
718474-1017



# 5-DAY FORECAST

## FOR HOLIDAY RESORTS:

MON 28 OCT –FRI 01 NOV 2024

### BINGA

MON	TUE	WED	THUR	FRI
37 29 5.0mm	36 28 10.0mm	36 29 0.2mm	35 30 0.5mm	36 31 0.5mm

### CHINHOYI CAVES

MON	TUE	WED	THUR	FRI
35 18 5.0mm	35 19 10.0mm	33 20 0.2mm	33 22 0.5mm	34 20 0.5mm

### CHIREDDI/GONAREZHOU NAT. PARK

MON	TUE	WED	THUR	FRI
40 22 5.0mm	41 21 10.0mm	39 20 0.2mm	38 21 0.5mm	40 21 0.5mm

### HWANGE NATIONAL PARK

MON	TUE	WED	THUR	FRI
34 23 5.0mm	36 21 10.0mm	34 23 0.2mm	35 22 0.5mm	34 20 0.5mm

### MATOPOS

MON	TUE	WED	THUR	FRI
32 20 5.0mm	33 22 10.0mm	31 20 0.2mm	30 21 0.5mm	32 20 0.5mm

### VICTORIA FALLS

MON	TUE	WED	THUR	FRI
36 23 5.0mm	35 21 10.0mm	35 22 0.2mm	33 21 0.5mm	34 20 0.5mm

### CHIMANIMANI

MON	TUE	WED	THUR	FRI
32 19 5.0mm	31 18 10.0mm	30 19 0.1mm	31 20 0.2mm	32 21 0.2mm

### GREAT ZIMBABWE

MON	TUE	WED	THUR	FRI
34 21 5.0mm	33 19 10.0mm	32 20 0.1mm	33 19 0.2mm	34 18 0.2mm

### HOT SPRINGS

MON	TUE	WED	THUR	FRI
36 19 5.0mm	35 18 10.0mm	36 17 0.1mm	34 18 0.2mm	33 19 0.2mm

### KARIBA

MON	TUE	WED	THUR	FRI
42 28 5.0mm	40 29 10.0mm	39 30 0.1mm	40 30 0.2mm	39 31 0.2mm

### NYANGA

MON	TUE	WED	THUR	FRI
28 16 5.0mm	28 16 10.0mm	29 17 0.1mm	29 16 0.2mm	28 16 0.2mm

### VUMBA

MON	TUE	WED	THUR	FRI
33 18 5.0mm	32 19 10.0mm	33 17 0.1mm	33 18 0.2mm	30 18 0.2mm