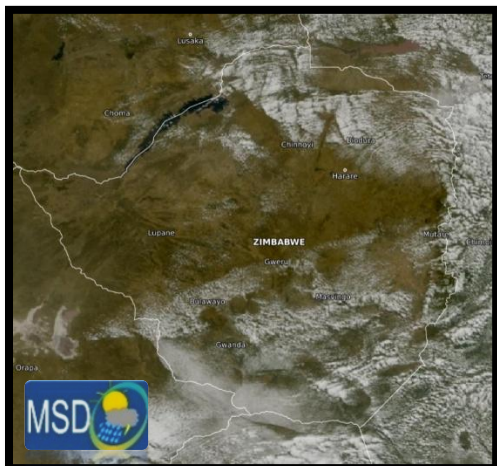




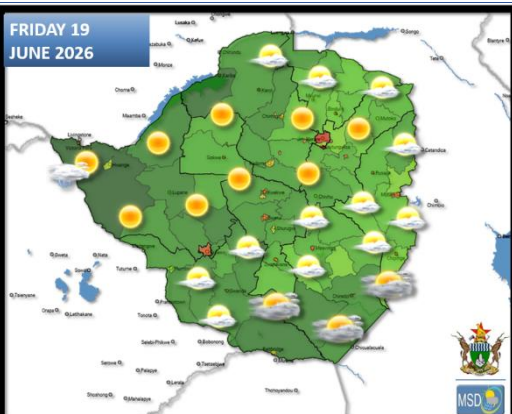
## SATELLITE-BASED GLANCE INTO TODAY, THURSDAY 18 JUNE 2026



It was mostly cloudy, windy and cold across Matabeleland South, Masvingo, Bulawayo Metropolitan, southern parts of the Midlands (Gweru to Zvishavane), Manicaland and northern areas of all Mashonaland Provinces, as moist air advected from the southeast and reduced frost occurrence nationwide. Other areas (Matabeleland North, northern parts of the Midlands, Harare Metropolitan and southern areas of all Mashonaland Provinces) were mostly sunny and mild by afternoon; this was as the southeast winds eased before re-strengthening toward evening.



## FORECAST FOR TOMORROW: FRIDAY 19 JUNE 2026



**Matabeleland South, southern parts of Midlands, Masvingo, Manicaland and southern parts of Mashonaland East Provinces:**

Mostly cloudy, windy and cool conditions in the morning. Becoming less cloudy and mild later in the day.

Actions to Take:

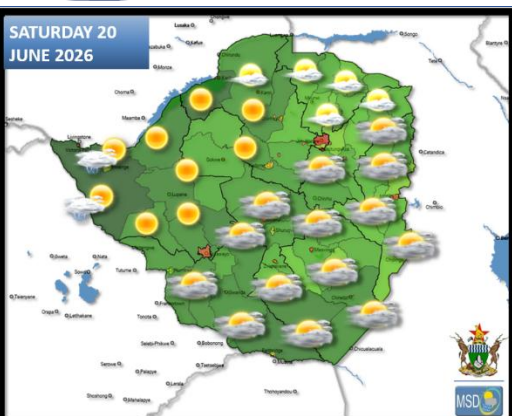


- Keep warm, especially overnight.
- If there is need to use a brazier or fire indoors, ensure that the room is well ventilated.
- Do not leave a fire unattended, whether indoor or outdoor, as this can easily get out of control.

**Matabeleland North, northern parts of Midlands, Mashonaland West, Mashonaland Central, Harare Metropolitan and northern parts of Mashonaland East Provinces:**

Partly cloudy and cold in the morning becoming warm as the day progresses. Brief cloudy periods and isolated thundershowers remain possible in Hwange District.

## WEATHER OUTLOOK FOR: SATURDAY 20 JUNE 2026



**Bulawayo Metropolitan, Matabeleland South, southern parts of Midlands, Masvingo, Manicaland and southern parts of Mashonaland East Provinces:**

Mostly cloudy, windy and cold in the morning with light drizzle in places. It should be mild by midday becoming cold towards evening.

Actions to Take:



- Ensure the elderly and young children are kept warm.
- Monitor temperature within fowl runs and adjust accordingly, with advice from your local Agricultural Business Advisory Officer (Agritex Officer).

**Matabeleland North, northern parts of Midlands, Mashonaland West, Mashonaland Central, Harare Metropolitan and northern parts of Mashonaland East Provinces:**

Mostly clear skies and cold in the morning with fog in places, becoming mild by mid-day with a light breeze. Expect cold conditions towards evening. Brief cloudy periods and isolated thundershowers remain possible in Hwange District.

Actions to Take

- When thunder roars, it is best to be indoors.
- Keep warm. Seek advice on redemptive and preventative measures against cold and flu from a certified medical practitioner.



Night	Twilight begins: 5:08	First light: 6:02	Sunrise: 6:25	Sunset: 17:29	Last light: 17:53	Twilight ends: 18:47	Night
-------	-----------------------	-------------------	---------------	---------------	-------------------	----------------------	-------





## MAIN CITIES FORECAST: FRIDAY 19 JUNE – TUESDAY 23 JUNE 2026

### BINDURA

FRI	SAT	SUN	MON	TUE
25°	24°	24°	23°	25°
9°	10°	7°	8°	9°
5.1°	6.1°	3.7°	4.8°	5.2°

### BULAWAYO

FRI	SAT	SUN	MON	TUE
24°	18°	16°	22°	23°
10°	10°	10°	9°	10°
6.6°	6.8°	6.7°	5.4°	6.0°

### CHINHOIYI

FRI	SAT	SUN	MON	TUE
27°	25°	25°	25°	27°
10°	12°	9°	9°	10°
6.5°	8.3°	5.6°	5.9°	6.1°

### GWANDA

FRI	SAT	SUN	MON	TUE
25°	18°	16°	22°	24°
11°	12°	11°	9°	11°
7.6°	9.0°	7.5°	5.6°	7.4°

### GWERU

FRI	SAT	SUN	MON	TUE
24°	21°	16°	22°	22°
9°	9°	10°	8°	9°
5.9°	5.7°	6.9°	4.7°	5.2°

### HARARE

FRI	SAT	SUN	MON	TUE
23°	22°	22°	22°	23°
11°	11°	9°	10°	11°
7.0°	7.9°	5.9°	6.4°	7.0°

### KADOMA

FRI	SAT	SUN	MON	TUE
27°	25°	25°	26°	26°
10°	11°	10°	10°	11°
6.3°	7.9°	6.7°	6.0°	7.1°

### KWEKWE

FRI	SAT	SUN	MON	TUE
26°	24°	23°	25°	26°
9°	12°	10°	9°	9°
5.8°	8.1°	6.9°	5.3°	5.5°

### LUPANE

FRI	SAT	SUN	MON	TUE
28°	27°	26°	27°	27°
10°	14°	12°	9°	10°
6.3°	10.9°	8.1°	6.0°	6.4°

### MARONDERA

FRI	SAT	SUN	MON	TUE
24°	21°	21°	21°	21°
8°	8°	6°	7°	8°
4.4°	4.5°	3.0°	3.3°	4.1°

### MASVINGO

FRI	SAT	SUN	MON	TUE
25°	21°	15°	23°	23°
11°	11°	10°	9°	10°
7.2°	7.3°	6.9°	5.7°	6.3°

### MUTARE

FRI	SAT	SUN	MON	TUE
22°	20°	13°	20°	22°
10°	10°	12°	10°	10°
6.5°	7.0°	8.5°	7.0°	6.2°





## HOLIDAY RESORTS FORECAST: FRIDAY 19 JUNE – TUESDAY 23 JUNE 2026

### BINGA



### CHIMANIMANI



### CHINHOYICAVES



### GONAREZHOU



### GREATZIMBABWE



### HOTSPRINGS



### HWANGENATPARK



### KARIBA



### MATOBO



### NYANGA



### VICFALLS



### VUMBA

