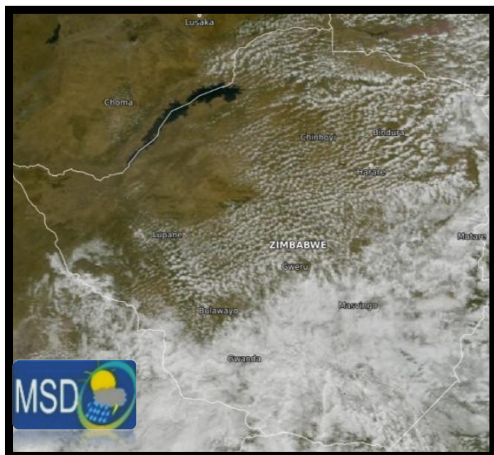




Weather Report & Forecast

SATELLITE-BASED GLANCE INTO TODAY, SUNDAY 21 JUNE 2026

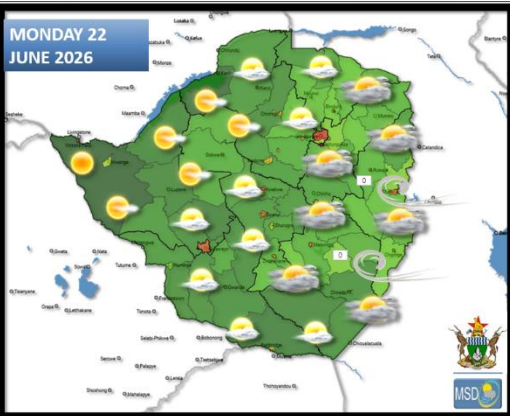


It was cloudy, windy and cool over Matabeleland South, Bulawayo Metropolitan, Southern areas of the Midlands, Masvingo and Manicaland Provinces for much of the day with rain and drizzle in place. The highest was 11 mm in Nyanga, followed by 4 mm in both Chisumbanje and Zaka. It became less cloudy and cold towards evening as the winds were shifting to an easterly direction.

All other areas were mostly sunny and mild by day, and became cold towards evening.



FORECAST FOR TOMORROW: MONDAY 22 JUNE 2026



Midlands, Masvingo, Manicaland, Harare Metropolitan and Mashonaland East Provinces:

Briefly cloudy, windy and cool at first light drizzle in places, becoming partly cloudy and mild by afternoon, and cool towards evening.

Actions to Take:

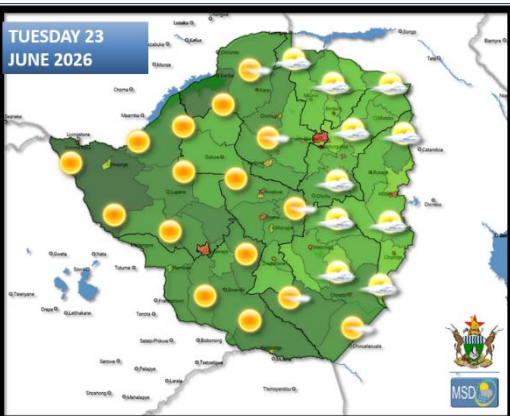


- Keep warm, especially overnight.
- If there is need to use a brazier or fire indoors, ensure that the room is well ventilated.
- When thunder roars, it is best to be indoors.

Matabeleland South, Bulawayo Metropolitan, Matabeleland North, Mashonaland West and Central Provinces:

Cold morning conditions under mostly clear skies with slight ground frost in **Matopos**; mild in the afternoon becoming cold again towards evening.

WEATHER OUTLOOK FOR: TUESDAY 23 JUNE 2026



Midlands, Masvingo, Manicaland, and Mashonaland East Provinces:

Partly cloudy and cold in the morning, becoming mostly sunny and mild by noon, then cold towards evening.

Actions to Take:



- Keep warm, especially overnight.
- If there is need to use a brazier or fire indoors, ensure that the room is well ventilated.
- When thunder roars, it is best to be indoors.

Matabeleland South, Bulawayo Metropolitan, Matabeleland North, Harare Metropolitan, Mashonaland West and Central Provinces:

Cold morning conditions under mostly clear skies with slight ground frost in areas such as **Lupane, Matopos and Gweru**. Mild in the afternoon becoming cold again towards evening.

Actions to Take

- Keep warm especially overnight.
- Seek advice on redemptive and preventative measures against respiratory illnesses, such as cold and flu, from a certified medical practitioner.
- Frost mitigation measure may be required in some areas; seek better advice from your local Agricultural Business Advisory Officer (Agritex Officer).



MAIN CITIES FORECAST: MONDAY 22 JUNE – FRIDAY 26 JUNE 2026

BINDURA

MON	TUE	WED	THU	FRI
24°	25°	26°	25°	24°
				
8°	8°	9°	9°	7°
4.3°	4.4°	5.4°	5.3°	3.9°

BULAWAYO

MON	TUE	WED	THU	FRI
23°	25°	25°	23°	22°
				
8°	10°	13°	10°	10°
4.7°	6.8°	9.2°	6.4°	7.0°

CHINHOYI

MON	TUE	WED	THU	FRI
25°	27°	28°	27°	26°
				
9°	9°	10°	10°	9°
5.2°	5.8°	6.9°	6.7°	5.2°

GWANDA

MON	TUE	WED	THU	FRI
23°	27°	27°	24°	23°
				
9°	11°	13°	12°	11°
5.8°	7.6°	9.6°	8.1°	7.9°

GWERU

MON	TUE	WED	THU	FRI
22°	25°	23°	23°	22°
				
8°	10°	11°	10°	9°
4.3°	6.2°	7.6°	6.6°	5.9°

HARARE

MON	TUE	WED	THU	FRI
22°	23°	24°	24°	23°
				
9°	10°	11°	12°	10°
6.0°	6.8°	7.8°	8.3°	6.5°

KADOMA

MON	TUE	WED	THU	FRI
25°	26°	26°	27°	25°
				
9°	11°	11°	11°	9°
5.8°	7.2°	7.5°	7.4°	5.2°

KWEKWE

MON	TUE	WED	THU	FRI
25°	26°	26°	27°	25°
				
8°	9°	9°	9°	9°
4.6°	5.8°	5.8°	6.0°	5.3°

LUPANE

MON	TUE	WED	THU	FRI
27°	28°	29°	28°	27°
				
9°	10°	10°	9°	10°
5.0°	6.4°	6.1°	5.1°	6.2°

MARONDERA

MON	TUE	WED	THU	FRI
21°	22°	23°	22°	21°
				
7°	8°	8°	8°	7°
3.1°	4.3°	4.6°	4.1°	3.3°

MASVINGO

MON	TUE	WED	THU	FRI
23°	25°	25°	24°	22°
				
9°	10°	11°	11°	10°
5.3°	7.0°	7.9°	7.2°	6.8°

MUTARE

MON	TUE	WED	THU	FRI
20°	23°	23°	21°	20°
				
9°	10°	10°	10°	10°
5.7°	6.1°	6.9°	6.6°	6.8°





HOLIDAY RESORTS FORECAST: MONDAY 22 – FRIDAY 26 JUNE 2026

BINGA



CHIMANIMANI



CHINHOYICAVES



GONAREZHOU



GREATZIMBABWE



HOTSPRINGS



HWANGENATPARK



KARIBA



MATOBO



NYANGA



VICFALLS



VUMBA

