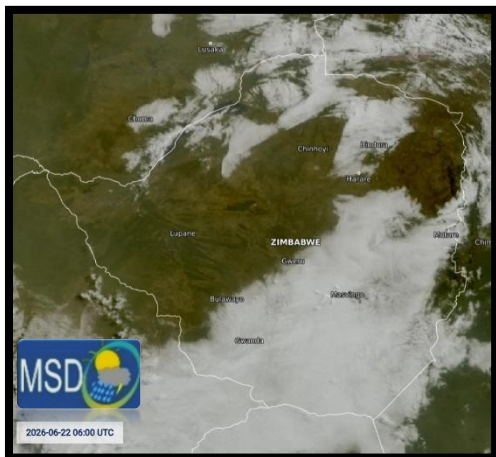




SATELLITE-BASED GLANCE INTO TODAY, MONDAY 22 JUNE 2026



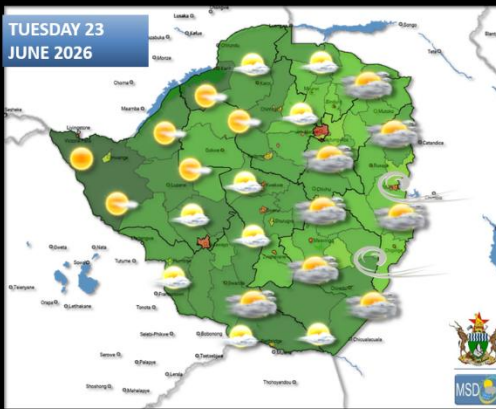
It was a cool, cloudy, and windy morning over **Matabeleland South, Bulawayo Metropolitan, Southern areas of the Midlands, Masvingo and Manicaland Provinces** with light rain and drizzle in place. The highest was **7 mm** in **Nyanga**. It became less cloudy and cold towards evening as the winds were shifting to an easterly direction.

All other areas were mostly sunny and mild by day, and became cold towards evening.

**10 DAY TO GO TO,
FRIDAY, 3 JULY 2026
FIRST FRIDAY IN JULY**



FORECAST FOR TOMORROW: TUESDAY 23 JUNE 2026



Matabeleland South, Bulawayo Metropolitan, southern areas of Midlands, Masvingo, Manicaland, and Mashonaland East Provinces:

Actions to Take:



Briefly cloudy, windy and cool at first light drizzle in places, becoming partly cloudy and mild by afternoon, and cool towards evening.

- **Keep warm, especially overnight.**
- **If there is need to use a brazier or fire indoors, ensure that the room is well ventilated.**

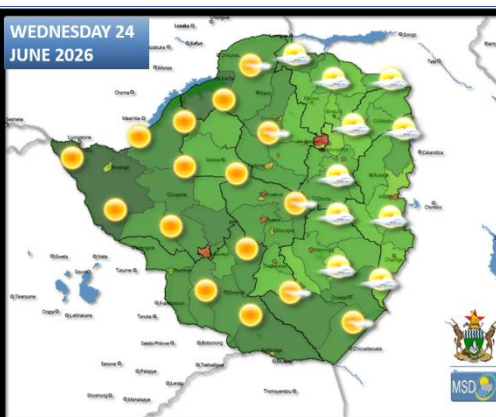
Matabeleland North, northern parts of the Midlands, Harare Metropolitan, Mashonaland West and Central Provinces:

Actions to Take

Cold morning conditions under mostly clear skies; partly cloudy and mild in the afternoon becoming cold again towards evening.

- **Keep warm especially overnight.**
- **Seek advice on redemptive and preventative measures against respiratory illnesses, such as cold and flu, from a certified medical practitioner.**

WEATHER OUTLOOK FOR: WEDNESDAY 24 JUNE 2026



Midlands, Masvingo, Manicaland, and Mashonaland East Provinces:

Actions to Take:

Partly cloudy and cold in the morning, becoming mostly sunny and mild by noon, then cold towards evening.

- **Keep warm, especially overnight.**
- **If there is need to use a brazier or fire indoors, ensure that the room is well ventilated.**

Matabeleland South, Bulawayo Metropolitan, Matabeleland North, Harare Metropolitan, Mashonaland West and Central Provinces:

Actions to Take



Cold morning conditions under mostly clear skies with slight ground frost in areas such as **Lupane, Matopos and Gweru**. Mild in the afternoon becoming cold again towards evening.

- **Keep warm especially overnight.**
- **Frost mitigation measure may be required in some areas; seek better advice from your local Agricultural Business Advisory Officer (Agritex Officer).**



MAIN CITIES FORECAST: TUESDAY 23 JUNE – SATURDAY 27 JUNE 2026

BINDURA

TUE	WED	THU	FRI	SAT
25°	26°	25°	24°	25°
8°	9°	9°	7°	7°
4.2°	5.4°	5.1°	3.9°	3.7°

BULAWAYO

TUE	WED	THU	FRI	SAT
24°	24°	23°	22°	24°
9°	12°	11°	9°	10°
5.8°	8.2°	7.2°	6.0°	6.1°

CHINHOYI

TUE	WED	THU	FRI	SAT
26°	28°	27°	25°	26°
9°	10°	10°	8°	8°
5.6°	6.6°	6.6°	5.0°	4.8°

GWANDA

TUE	WED	THU	FRI	SAT
26°	27°	24°	23°	24°
10°	12°	12°	10°	10°
6.9°	8.6°	8.6°	6.9°	6.4°

GWERU

TUE	WED	THU	FRI	SAT
23°	23°	23°	21°	25°
9°	10°	10°	8°	8°
5.5°	6.3°	6.2°	4.6°	4.7°

HARARE

TUE	WED	THU	FRI	SAT
22°	23°	24°	22°	22°
10°	12°	12°	10°	10°
6.5°	8.1°	8.0°	6.2°	6.2°

KADOMA

TUE	WED	THU	FRI	SAT
26°	26°	26°	25°	26°
10°	11°	10°	8°	9°
6.6°	7.1°	6.9°	5.0°	5.6°

KWEKWE

TUE	WED	THU	FRI	SAT
25°	26°	26°	25°	26°
9°	9°	9°	8°	8°
5.5°	5.4°	5.9°	4.6°	4.5°

LUPANE

TUE	WED	THU	FRI	SAT
27°	28°	27°	26°	29°
9°	9°	9°	8°	8°
5.9°	5.8°	5.2°	5.0°	4.2°

MARONDERA

TUE	WED	THU	FRI	SAT
22°	22°	22°	21°	22°
7°	8°	7°	6°	6°
3.7°	4.8°	3.9°	2.8°	2.9°

MASVINGO

TUE	WED	THU	FRI	SAT
25°	25°	23°	22°	24°
10°	11°	11°	10°	9°
6.2°	7.7°	7.1°	6.3°	5.7°

MUTARE

TUE	WED	THU	FRI	SAT
23°	23°	21°	20°	22°
9°	10°	10°	10°	9°
5.8°	6.9°	6.5°	6.4°	5.3°





HOLIDAY RESORTS FORECAST: TUESDAY 23 JUNE – SATURDAY 27 JUNE 2026

BINGA



CHIMANIMANI



CHINHOYICAVES



GONAREZHOU



GREATZIMBABWE



HOTSPRINGS



HWANGENATPARK



KARIBA



MATOBO



NYANGA



VICFALLS



VUMBA

