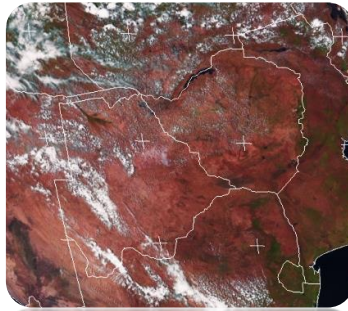




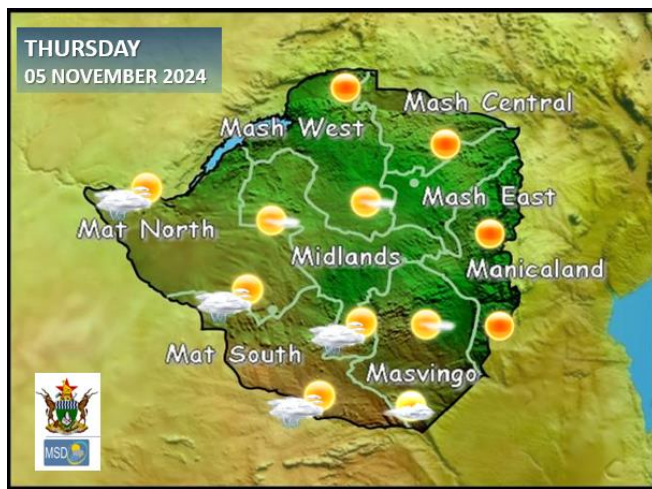
## SATELLITE-BASED GLANCE INTO THIS MORNING, MONDAY 04 NOVEMBER 2024

# WEATHER REPORT & Forecast



A cloud-band is slowly approaching the country from the west. Moisture from this system currently over Botswana resulted in hot and humid conditions in Matabeleland North and South Provinces. It was relatively dry over the Eastern highlands, cool at first but hot by afternoon. All other areas were mild at first with clear skies countrywide.

## WEATHER FOR TOMORROW: TUESDAY 05 NOVEMBER 2024



**Morning:** Humid conditions are expected in Matabeleland North and South Provinces, with mild early morning conditions and clear skies over all other areas.

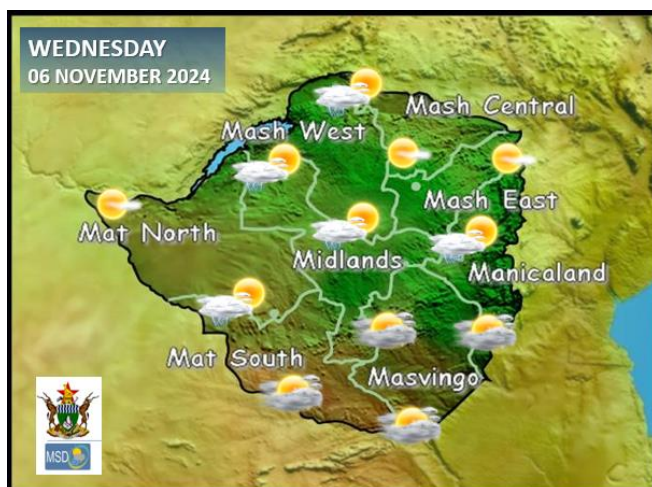
**Afternoon:** Isolated thundershowers are expected in both Matabeleland Provinces and Bulawayo Metropolitan Province. All other areas should be mostly sunny, humid and hot.

**Overnight:** It should get mild towards evening, with clouds into Midlands and Masvingo as well. Overnight rain is probable.

### IMPACTS & ACTIONS TO TAKE

- **When thunder roars it is best to be indoors.**
- **Watch for cooler conditions in southern Zimbabwe.**

## WEATHER OUTLOOK FOR: WEDNESDAY 06 NOVEMBER 2024



**Morning:** Scattered clouds are expected over much of the country, mild at first but warm by mid-morning. Morning showers that may be thundery are probable in Matabeleland South, Masvingo and Midlands.

**Afternoon:** Isolated thundershowers are expected under mostly cloudy skies countrywide. It should be warm in most places, though windy in Masvingo and Manicaland

**Overnight:** Most areas are expected to be mild and cloudy, with **Matabeleland South, Masvingo**, and the southern parts of **Manicaland Province** being cool and windy.

### Impacts & Actions to Take

**Rainfall is very localised, consult your local Agritex officer for advice on what to plant and when to plant, taking into account the water requirements for specific plant stages**



## 5-DAY FORECAST FOR MAJOR CITIES:

TUE 05- SAT 09 NOV 2024

### BULAWAYO

TUE	WED	THU	FRI	SAT
35 20	28 20	31 16	30 17	33 18
0.0mm	0.4mm	1.4mm	1.6mm	1.6mm

### CHINHOYI

TUE	WED	THU	FRI	SAT
36 18	30 21	30 20	32 19	35 19
0.0mm	0.9mm	0.9mm	0.2mm	0.2mm

### GWERU

TUE	WED	THU	FRI	SAT
35 15	35 18	29 18	28 15	33 16
0.0mm	0.0mm	0.0mm	0.2mm	0.2mm

### KADOMA

TUE	WED	THU	FRI	SAT
37 20	32 20	30 22	33 20	36 20
0.0mm	0.0mm	0.0mm	0.0mm	0.0mm

### LUPANE

TUE	WED	THU	FRI	SAT
38 20	38 22	36 22	34 24	32 22
0.0mm	0.0mm	0.0mm	0.8mm	0.2mm

### MASVINGO

TUE	WED	THU	FRI	SAT
38 19	28 20	29 17	29 18	35 17
0.0mm	0.0mm	0.0mm	0.0mm	0.0mm

### BINDURA

TUE	WED	THU	FRI	SAT
29 19	30 17	30 18	32 20	35 20
0.2mm	0.0mm	0.0mm	3.1mm	1.1mm

### GWANDA

TUE	WED	THU	FRI	SAT
39 20	40 17	27 23	31 19	32 22
1.2mm	1.8mm	0.8mm	0.3mm	0.3mm

### HARARE

TUE	WED	THU	FRI	SAT
34 21	29 19	28 17	29 17	32 18
0.0mm	0.0mm	0.1mm	1.2mm	1.2mm

### KWEKWE

TUE	WED	THU	FRI	SAT
38 20	31 19	32 20	30 18	33 18
0.2mm	0.2mm	1.3mm	5.8mm	5.8mm

### MARONDERA

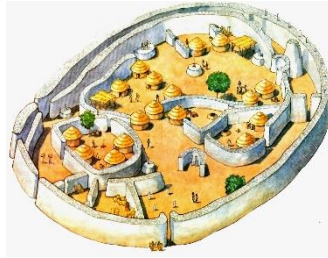
TUE	WED	THU	FRI	SAT
32 15	34 17	33 18	29 19	25 16
0.0mm	0.0mm	0.9mm	0.9mm	1.8mm

### MUTARE

TUE	WED	THU	FRI	SAT
31 16	33 17	34 17	33 18	27 17
0.0mm	0.0mm	0.0mm	0.0mm	0.0mm



VICTORIA FALLS  
ZIMBABWE



# 5-DAY FORECAST

## FOR HOLIDAY RESORTS:

TUE 05 – SAT 09 NOV 2024

### BINGA

TUE	WED	THU	FRI	SAT
40 25	42 20	38 24	38 24	39 25
0.0mm	0.0mm	0.0mm	0.0mm	0.0mm

### CHINHOYI CAVES

TUE	WED	THU	FRI	SAT
35 15	36 17	33 16	32 20	29 20
0.2mm	0.0mm	0.0mm	0.0mm	0.0mm

### CHIREDDI/GONAREZHOU NAT. PARK

TUE	WED	THU	FRI	SAT
38 21	40 20	26 20	24 20	28 19
0.0mm	0.0mm	2.9mm	9.4mm	0.8mm

### HWANGE NATIONAL PARK

TUE	WED	THU	FRI	SAT
38 23	37 23	33 19	33 21	35 21
0.0mm	0.0mm	0.1mm	0.10mm	0.3mm

### MATOPOS

TUE	WED	THU	FRI	SAT
36 18	28 18	31 17	29 17	34 16
0.0mm	0.0mm	0.4mm	2.0mm	0.4mm

### VICTORIA FALLS

TUE	WED	THU	FRI	SAT
38 24	38 24	37 24	34 22	36 21
0.0mm	0.0mm	0.4mm	0.2mm	0.2mm

### CHIMANIMANI

TUE	WED	THU	FRI	SAT
32 16	32 15	24 16	29 17	30 17
0.0mm	0.0mm	0.0mm	0.0mm	0.0mm

### GREAT ZIMBABWE

TUE	WED	THU	FRI	SAT
30 17	33 19	29 20	21 15	34 17
0.0mm	0.0mm	0.3mm	2.0mm	0.7mm

### HOT SPRINGS

TUE	WED	THU	FRI	SAT
37 16	37 17	34 17	30 18	29 17
0.0mm	0.0mm	0.0mm	0.1mm	2.5mm

### KARIBA

TUE	WED	THU	FRI	SAT
41 27	37 28	34 26	36 27	37 28
0.0mm	0.0mm	0.0mm	0.0mm	0.0mm

### NYANGA

TUE	WED	THU	FRI	SAT
31 17	24 18	21 15	22 14	30 14
0.0mm	0.0mm	20.1mm	3.4mm	1.7mm

### VUMBA

TUE	WED	THU	FRI	SAT
31 16	32 15	34 17	25 18	25 18
0.0mm	0.0mm	0.0mm	0.0mm	0.0mm