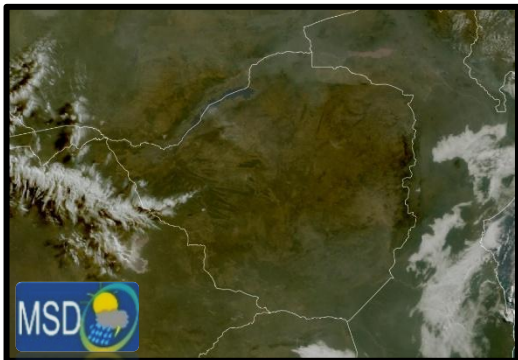




SATELLITE-BASED GLANCE INTO TODAY, TUESDAY 30 JUNE 2026



Clear skies overnight resulted in cold morning conditions across much of the country, with slight ground frost recorded in **Matopos, Gweru, Nyanga, Chivhu, Nkayi and Henderson.**

As the day progressed, conditions became mild under mostly sunny skies across most areas, except over Matabeleland North Province, where partly cloudy conditions were observed. Towards evening, conditions turned cold and windy more felt over Masvingo Province.



03 DAYS TO GO TO,
FRIDAY, 3 JULY 2026
FIRST FRIDAY IN JULY



FORECAST FOR TOMORROW: WEDNESDAY 01 JULY 2026

Matabeleland South and southern parts of Midlands, Masvingo and Manicaland Provinces:

Actions to Take:

Windy and cool for much of the day with brief cloudy periods in districts such as Beitbridge, Mwenezi and Chipinge, though cold in the morning towards evening.

- Dress in layers so you can adjust to the mild daytime conditions and colder mornings/evenings.
- Consume warm fluids such as tea or soup to help maintain body warmth and soothe the throat from adverse effects of the cold.

Matabeleland North, Bulawayo Metropolitan, northern parts of Midlands, Harare Metropolitan and all Mashonaland Provinces:

Actions to Take

Mostly clear skies and cold morning conditions, with a chance of slight ground frost in areas such as Marondera. Mild in the afternoon, becoming cold towards evening.

- Limit prolonged outdoor exposure during the cold morning and evening hours, especially for children and the elderly.

WEATHER OUTLOOK FOR: THURSDAY 02 JULY 2026

Bulawayo Metropolitan, western parts of Midlands, Masvingo, and all Matabeleland Provinces:

Actions to Take:

Partly cloudy and cold at first, becoming mild as the day progresses. Cold conditions overnight.

- Keep warm. If there is need to use a brazier or fire indoors, ensure that the room is well ventilated.
- Use safe heating methods and avoid leaving open flames unattended indoors or outdoors.
- Frost mitigation measure may be required in some areas; seek advice from your local Agricultural Business Advisory Officer (Agritex Officer).

Eastern parts of Midlands, Harare Metropolitan, Manicaland and all Mashonaland Provinces:

Actions to Take

Cold morning conditions under mostly clear skies, with a chance of slight ground frost in areas such as Henderson and Chivhu. Mild in the afternoon, becoming cold towards evening.

- Limit prolonged outdoor exposure during the cold morning and evening hours, especially for children and the elderly.



MAIN CITIES FORECAST: WEDNESDAY 01 JULY – SUNDAY 05 JULY 2026

BINDURA

WED	THU	FRI	SAT	SUN
26°	29°	30°	27°	27°
9°	9°	11°	11°	10°
5.8°	5.0°	7.5°	7.8°	6.0°

BULAWAYO

WED	THU	FRI	SAT	SUN
25°	27°	27°	26°	25°
11°	10°	10°	11°	11°
7.8°	6.8°	6.3°	7.3°	7.7°

CHINHOYI

WED	THU	FRI	SAT	SUN
27°	30°	31°	28°	30°
11°	11°	12°	13°	12°
7.0°	7.2°	8.3°	9.5°	8.0°

GWANDA

WED	THU	FRI	SAT	SUN
26°	31°	28°	26°	26°
11°	13°	10°	10°	12°
7.5°	9.6°	6.6°	6.4°	8.7°

GWERU

WED	THU	FRI	SAT	SUN
25°	27°	25°	26°	26°
10°	10°	11°	10°	10°
6.3°	6.5°	7.5°	6.4°	6.7°

HARARE

WED	THU	FRI	SAT	SUN
23°	28°	26°	25°	25°
12°	12°	14°	14°	13°
8.1°	8.3°	10.8°	10.4°	9.3°

KADOMA

WED	THU	FRI	SAT	SUN
27°	28°	30°	29°	29°
12°	12°	12°	13°	13°
8.1°	8.5°	8.7°	9.3°	9.1°

KWEKWE

WED	THU	FRI	SAT	SUN
26°	28°	28°	27°	29°
9°	10°	12°	11°	10°
5.3°	6.1°	8.8°	7.0°	6.8°

LUPANE

WED	THU	FRI	SAT	SUN
28°	30°	32°	30°	31°
9°	12°	10°	10°	10°
5.2°	8.0°	6.9°	6.1°	6.3°

MARONDERA

WED	THU	FRI	SAT	SUN
24°	28°	26°	26°	25°
9°	9°	11°	10°	10°
5.3°	6.0°	7.4°	6.3°	6.6°

MASVINGO

WED	THU	FRI	SAT	SUN
27°	29°	26°	27°	27°
11°	12°	12°	11°	12°
7.6°	8.7°	8.8°	7.2°	8.5°

MUTARE

WED	THU	FRI	SAT	SUN
23°	28°	27°	23°	24°
11°	11°	14°	11°	13°
7.0°	7.5°	10.2°	7.8°	9.7°

WEATHER HEALTH SAFETY TIPS

STAY HEALTHY IN CHILLY WEATHER



Dress in Layers
Stay warm and adjust to changing temps.



Drink Warm Fluids
Tea, soup, or warm drinks.



Keep Indoors Cozy
Dry & warm living spaces.



HOLIDAY RESORTS FORECAST: WEDNESDAY 01 JULY – SUNDAY 05 JULY 2026

BINGA

WED	THU	FRI	SAT	SUN
25°	27°	28°	27°	26°
14°	15°	16°	15°	16°
10.5°	11.0°	12.0°	11.1°	12.3°

CHIMANIMANI

WED	THU	FRI	SAT	SUN
23°	25°	25°	23°	24°
10°	11°	13°	10°	11°
6.0°	7.2°	9.1°	6.8°	7.6°

CHINHOYICAVES

WED	THU	FRI	SAT	SUN
27°	29°	30°	28°	28°
11°	11°	12°	13°	12°
7.6°	8.0°	8.6°	9.9°	8.7°

GONAREZHOU

WED	THU	FRI	SAT	SUN
27°	32°	27°	23°	29°
14°	14°	16°	14°	14°
10.4°	10.3°	12.6°	11.0°	10.9°

GREATZIMBABWE

WED	THU	FRI	SAT	SUN
26°	29°	25°	26°	25°
12°	13°	13°	10°	13°
8.1°	9.3°	9.9°	6.7°	9.1°

HOTSPRINGS

WED	THU	FRI	SAT	SUN
26°	29°	27°	25°	27°
12°	14°	15°	13°	13°
8.7°	10.3°	11.3°	8.0°	9.9°

HWANGENATPARK

WED	THU	FRI	SAT	SUN
28°	30°	30°	31°	30°
9°	12°	9°	9°	11°
6.0°	8.6°	5.4°	5.4°	7.0°

KARIBA

WED	THU	FRI	SAT	SUN
28°	30°	28°	29°	28°
15°	15°	17°	17°	16°
11.1°	11.1°	13.6°	13.2°	12.9°

MATOBO

WED	THU	FRI	SAT	SUN
26°	28°	25°	27°	25°
11°	11°	8°	9°	11°
7.2°	7.6°	4.9°	5.6°	7.2°

NYANGA

WED	THU	FRI	SAT	SUN
22°	24°	24°	22°	22°
8°	9°	11°	9°	10°
4.3°	5.3°	7.5°	5.6°	6.2°

VICFALLS

WED	THU	FRI	SAT	SUN
30°	32°	29°	31°	29°
11°	12°	11°	11°	13°
7.7°	8.5°	7.9°	7.4°	9.0°

VUMBA

WED	THU	FRI	SAT	SUN
23°	28°	27°	23°	24°
11°	11°	14°	11°	13°
7.0°	7.5°	10.2°	7.8°	9.7°

