



GOVERNMENT OF ZIMBABWE
MINISTRY OF ENVIRONMENT, CLIMATE AND WILDLIFE

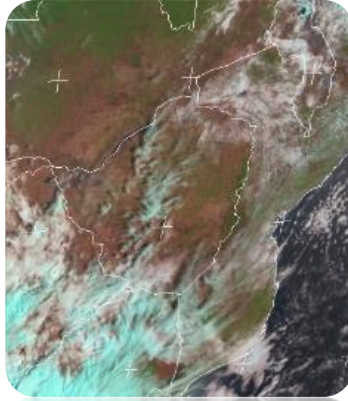


METEOROLOGICAL SERVICES DEPARTMENT
P.O. BOX 88, BELVEDERE, HARARE, ZIMBABWE
PHONE: +263 242 778 161 / +263 778 125 911
All correspondence should be addressed to the Director



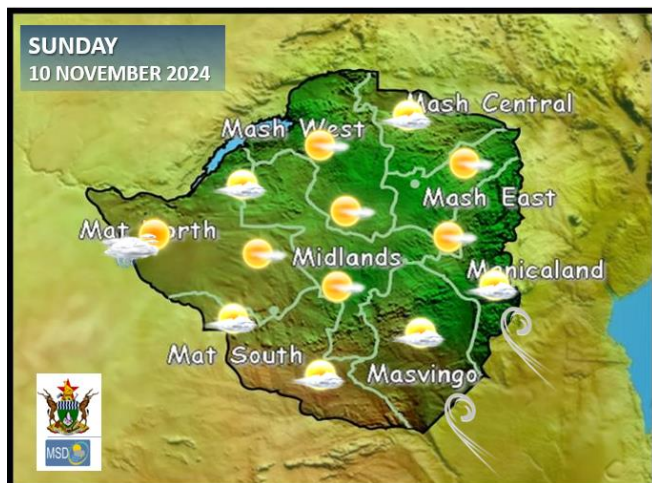
SATELLITE-BASED GLANCE INTO THIS MORNING, SATURDAY 09 NOVEMBER 2024

WEATHER REPORT & Forecast



Partly cloudy conditions with isolated light showers of rain were experienced yesterday in the western and southern parts of the country. This morning it was mostly cloudless over much of the country except for areas in **Matabeleland South, the Midlands and Mashonaland West provinces** which were briefly cloudy. By the afternoon, it was mostly sunny and hot in all areas.

WEATHER FOR TOMORROW: SUNDAY 10 NOVEMBER 2024

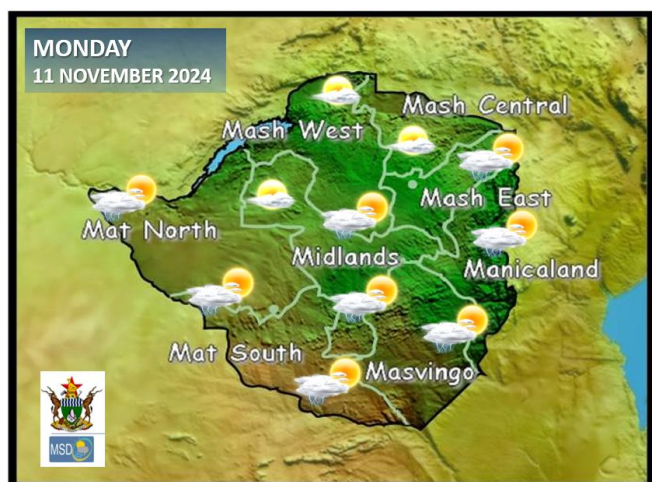


- Morning:** Briefly cloudy, cool and windy conditions over the **western and southern parts** of the country. All other areas should be mild under cloudless skies.
- Afternoon:** Partly cloudy and hot with a chance of isolated thunderstorms over all **Matabeleland provinces and Masvingo**. The rest of the country should be mostly sunny and hot.
- Overnight:** Cloudless with warm conditions.

IMPACTS & ACTIONS TO TAKE

- When thunder roars it is best to be indoors.
- Watch for cooler conditions in southern Zimbabwe.

WEATHER OUTLOOK FOR: MONDAY 11 NOVEMBER 2024



- Morning:** Anticipate partly cloudy, cool and windy conditions over **all Matabeleland provinces, Masvingo and Manicaland provinces**. The remaining areas should be briefly cloudy and mild.
- Afternoon:** Cloudy and hot conditions over **all Matabeleland provinces, Masvingo, the Midlands, Manicaland and Mashonaland East provinces** with a chance of scattered thundershowers. The remaining areas should be partly cloudy and hot.
- Overnight:** Partly cloudy and mild conditions with a chance of isolated thunder showers.

Impacts & Actions to Take:

Rainfall is very localised, consult your local Agritex officer for advice on what to plant and when to plant.



METEOROLOGICAL SERVICES DEPARTMENT
ISSUED IN CONJUNCTION WITH
DEPARTMENT OF CIVIL PROTECTION &
ZIMBABWE NATIONAL WATER AUTHORITY





5-DAY FORECAST FOR MAJOR CITIES:

SUN 10 -THUR 14 NOV 2024

BULAWAYO

SUN	MON	TUE	WED	THUR
34 19	35 20	32 19	31 18	30 19
0.0mm	5mm	15mm	10mm	5mm

CHINHOYI

SUN	MON	TUE	WED	THUR
35 20	36 19	35 19	33 18	34 18
0.0mm	0.0mm	2mm	5mm	10mm

GWERU

SUN	MON	TUE	WED	THUR
29 15	30 16	29 17	28 17	29 18
0.0mm	0.5mm	5.0mm	10.0mm	20mm

KADOMA

SUN	MON	TUE	WED	THUR
33 18	35 17	34 20	32 19	31 18
0.5mm	1.0mm	5.0mm	10mm	10mm

LUPANE

SUN	MON	TUE	WED	THUR
37 23	37 22	36 21	33 22	34 21
0.5mm	0.5mm	5.0mm	1.0mm	0.2mm

MASVINGO

SUN	MON	TUE	WED	THUR
35 18	36 18	35 17	31 18	32 19
0.0mm	0.5mm	5.0mm	10mm	10mm

BINDURA

SUN	MON	TUE	WED	THUR
34 19	36 20	35 19	32 18	33 19
0.2mm	0.0mm	0.5mm	5mm	10mm

GWANDA

SUN	MON	TUE	WED	THUR
35 18	35 20	33 19	31 18	30 18
0.0mm	2mm	5mm	10.0mm	5mm

HARARE

SUN	MON	TUE	WED	THUR
32 17	33 17	32 19	31 18	30 19
0.0mm	0.0mm	2mm	5mm	10mm

KWEKWE

SUN	MON	TUE	WED	THUR
34 16	35 17	33 18	30 17	28 17
0.2mm	0.5mm	10mm	5mm	10mm

MARONDERA

SUN	MON	TUE	WED	THUR
31 15	32 15	31 16	29 17	31 17
0.0mm	0.5mm	10mm	15mm	20mm

MUTARE

SUN	MON	TUE	WED	THUR
31 14	32 15	30 16	29 18	31 18
0.0mm	0.0mm	0.6mm	10mm	20mm



VICTORIA FALLS



5-DAY FORECAST

FOR HOLIDAY RESORTS:

SUN 10 - THUR 14 NOV 2024

BINGA

SUN	MON	TUE	WED	THUR
35 28 0.0mm	37 25 0.0mm	36 27 0.0mm	35 27 0.0mm	37 23 0.0mm

CHINHOYI CAVES

SUN	MON	TUE	WED	THUR
35 20 0mm	36 19 0.2mm	35 19 5.0mm	33 18 10.0mm	34 18 5.0mm

CHIREDDI/GONAREZHOU NAT. PARK

SUN	MON	TUE	WED	THUR
35 19 0.0mm	36 20 0.5mm	35 20 5mm	34 21 10mm	33 21 2.0mm

HWANGE NATIONAL PARK

SUN	MON	TUE	WED	THUR
37 22 0.2mm	38 22 0.0mm	36 23 5.0mm	35 23 5.0mm	36 22 10.0mm

MATOPOS

SUN	MON	TUE	WED	THUR
33 19 0.0mm	34 20 0.0mm	33 21 0.4mm	30 19 2.0mm	30 21 0.4mm

VICTORIA FALLS

SUN	MON	TUE	WED	THUR
35 19 0.0mm	36 18 0.5mm	35 18 0.5mm	32 18 5.0mm	31 16 1.0mm

CHIMANIMANI

SUN	MON	TUE	WED	THUR
32 17 0.0mm	33 16 0.0mm	29 17 0.0mm	30 18 0.0mm	28 17 0.0mm

GREAT ZIMBABWE

SUN	MON	TUE	WED	THUR
35 18 0.0mm	36 18 0.0mm	35 17 0.3mm	31 18 2.0mm	32 19 0.7mm

HOT SPRINGS

SUN	MON	TUE	WED	THUR
33 18 0.0mm	35 19 0.0mm	34 18 0.0mm	34 18 1.3mm	31 17 18.3mm

KARIBA

SUN	MON	TUE	WED	THUR
38 27 0.0mm	39 26 0.0mm	38 25 0.0mm	37 26 0.0mm	37 25 0.0mm

NYANGA

SUN	MON	TUE	WED	THUR
25 15 0.0mm	26 14 10mm	25 15 20mm	24 15 15mm	24 15 5.0mm

VUMBA

SUN	MON	TUE	WED	THUR
32 16 0.0mm	33 17 0.2mm	31 16 1.0mm	30 15 5.0mm	29 16 10mm