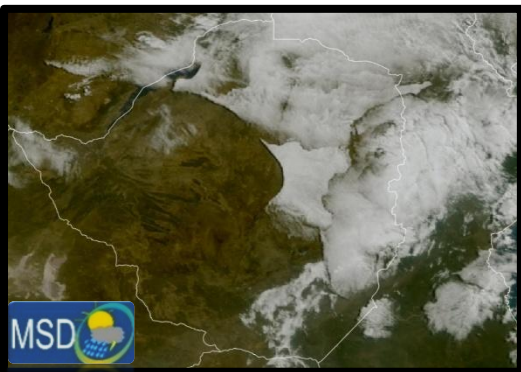




SATELLITE-BASED GLANCE INTO TODAY, TUESDAY 07 JULY 2026

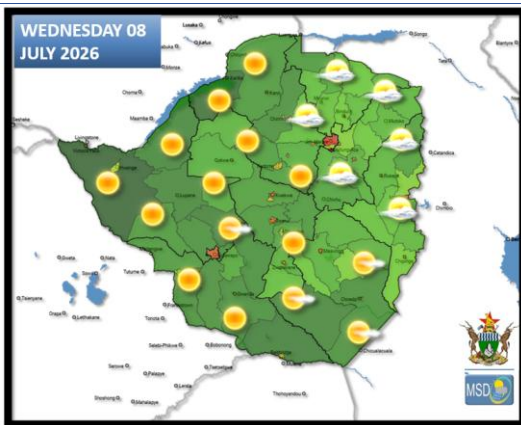


Brief cloudy and cold conditions prevailed over much of the northern and eastern parts of the country early in the morning. The remaining areas had clear skies and cold conditions at first. As the day progressed partly cloudy and mild conditions prevailed over much of **Harare Metropolitan, Masvingo, Manicaland and all Mashonaland provinces** with the remaining areas being mostly sunny.



DRESS WARMLY | KEEP WARM
 ESPECIALLY IN THE EARLY MORNING HOURS & OVERNIGHT. ENSURE YOUNG CHILDREN, THE ELDERLY, & PERSON'S OF AN ILL DISPOSITION ARE KEPT WARM

FORECAST FOR TOMORROW: WEDNESDAY 08 JULY 2026



Mashonaland Central, Mashonaland East, Harare Metropolitan, and the northern parts of Manicaland provinces:

Partly cloudy and cold in the morning becoming mild in the afternoon. Cold conditions overnight.

Actions to Take:

- Ensure the young and elderly are kept warm especially in the morning and overnight.

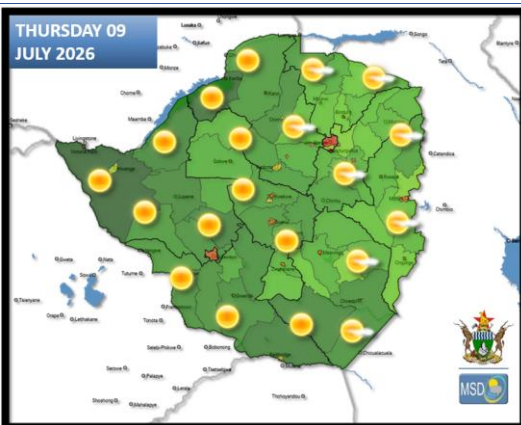
Mashonaland West, Matabeleland North and South, Bulawayo Metropolitan, southern parts of Manicaland, Masvingo, and Midlands provinces.

Clear skies and cold conditions with a chance of slight ground frost in Matopos, Lupane, Kezi, Gweru and Gwanda. Anticipate mostly sunny and mild conditions in the afternoon becoming cold overnight.

Actions to Take:

- Implement frost prevention measures where necessary, with advice from Agritex Officer
- Monitor temperature within fowl runs and adjust accordingly, with advice from your local Agricultural Business Advisory Officer (ABAO).

WEATHER OUTLOOK FOR: THURSDAY 09 JULY 2026



ALL AREAS:

Cold under clear skies at first with a chance of slight ground frost in **Matopos, Gweru, Lupane, Plumtree, Gwanda, Masvingo, Marondera, Kezi, and Nyanga**. Mild in the afternoon and cold towards evening.

Actions to Take:

- Monitor temperature within fowl runs and adjust accordingly, with advice from your local Agricultural Business Advisory Officer (ABAO).
- Implement frost prevention measures where necessary, with advice from Agritex Officer



MAIN CITIES FORECAST: WEDNESDAY 08 JULY – SUNDAY 12 JULY 2026

BINDURA

TUE	WED	THU	FRI	SAT
24°	25°	27°	27°	29°
8°	7°	8°	9°	10°
4.9°	3.8°	4.3°	5.5°	6.4°

CHINHOYI

TUE	WED	THU	FRI	SAT
25°	26°	28°	27°	28°
9°	9°	10°	10°	11°
5.9°	5.2°	6.0°	6.2°	7.6°

GWERU

TUE	WED	THU	FRI	SAT
21°	21°	23°	26°	28°
8°	7°	8°	9°	9°
4.3°	3.3°	4.2°	5.5°	6.0°

KADOMA

TUE	WED	THU	FRI	SAT
25°	25°	25°	27°	27°
9°	8°	9°	9°	12°
5.8°	4.9°	5.0°	6.0°	8.3°

LUPANE

TUE	WED	THU	FRI	SAT
27°	28°	28°	29°	29°
8°	7°	7°	7°	9°
4.9°	3.9°	3.4°	3.7°	5.2°

MASVINGO

TUE	WED	THU	FRI	SAT
22°	22°	24°	26°	27°
9°	8°	8°	10°	11°
5.2°	4.6°	4.9°	6.6°	7.1°

BULAWAYO

TUE	WED	THU	FRI	SAT
21°	22°	25°	25°	26°
9°	8°	8°	10°	10°
5.3°	4.1°	4.5°	6.3°	6.6°

GWANDA

TUE	WED	THU	FRI	SAT
22°	23°	25°	26°	28°
9°	9°	9°	10°	10°
5.1°	5.2°	5.2°	6.7°	6.8°

HARARE

TUE	WED	THU	FRI	SAT
22°	22°	24°	24°	25°
10°	10°	10°	11°	12°
6.3°	6.8°	6.7°	7.8°	8.6°

KWEKWE

TUE	WED	THU	FRI	SAT
25°	25°	26°	27°	26°
8°	7°	8°	8°	8°
4.6°	4.0°	4.2°	4.5°	4.9°

MARONDERA

TUE	WED	THU	FRI	SAT
21°	21°	23°	24°	25°
6°	5°	7°	8°	9°
2.3°	1.9°	3.1°	4.5°	5.7°

MUTARE

TUE	WED	THU	FRI	SAT
19°	21°	24°	25°	24°
10°	8°	9°	10°	10°
6.2°	5.0°	5.1°	6.3°	6.7°





HOLIDAY RESORTS FORECAST: WEDNESDAY 08 JULY – SUNDAY 12 JULY 2026M ,

BINGA

TUE	WED	THU	FRI	SAT
25°	24°	25°	26°	25°
14°	13°	13°	13°	15°
10.5°	9.5°	9.9°	10.0°	11.1°

CHINHOYICAVES

TUE	WED	THU	FRI	SAT
25°	26°	26°	27°	28°
10°	9°	9°	10°	12°
6.1°	5.4°	5.9°	6.7°	8.6°

GREATZIMBABWE

TUE	WED	THU	FRI	SAT
21°	21°	24°	25°	27°
9°	9°	9°	11°	12°
5.5°	5.4°	5.5°	7.5°	8.1°

HWANGENATPARK

TUE	WED	THU	FRI	SAT
28°	26°	28°	29°	30°
10°	7°	8°	8°	9°
6.9°	4.0°	4.4°	4.5°	6.0°

MATOBO

TUE	WED	THU	FRI	SAT
21°	21°	24°	26°	26°
7°	7°	7°	9°	9°
3.7°	3.5°	3.6°	5.8°	5.7°

VICFALLS

TUE	WED	THU	FRI	SAT
25°	26°	28°	29°	31°
10°	10°	10°	10°	12°
6.6°	6.6°	6.2°	6.6°	8.1°

CHIMANIMANI

TUE	WED	THU	FRI	SAT
21°	21°	21°	23°	24°
7°	6°	8°	9°	10°
3.8°	2.7°	4.1°	5.8°	6.4°

GONAREZHOU

TUE	WED	THU	FRI	SAT
25°	25°	27°	27°	27°
13°	12°	13°	13°	13°
9.3°	8.3°	9.2°	9.5°	9.3°

HOTSPRINGS

TUE	WED	THU	FRI	SAT
23°	23°	25°	27°	28°
10°	9°	10°	11°	13°
6.3°	5.8°	6.5°	7.8°	9.3°

KARIBA

TUE	WED	THU	FRI	SAT
25°	24°	25°	27°	28°
13°	13°	15°	14°	15°
9.8°	10.0°	11.1°	10.8°	11.4°

NYANGA

TUE	WED	THU	FRI	SAT
18°	20°	21°	21°	22°
8°	4°	7°	7°	8°
2.5°	0.8°	3.2°	3.9°	4.7°

VUMBA

TUE	WED	THU	FRI	SAT
19°	21°	24°	25°	24°
10°	8°	9°	10°	10°
6.2°	5.0°	5.1°	6.3°	6.7°

